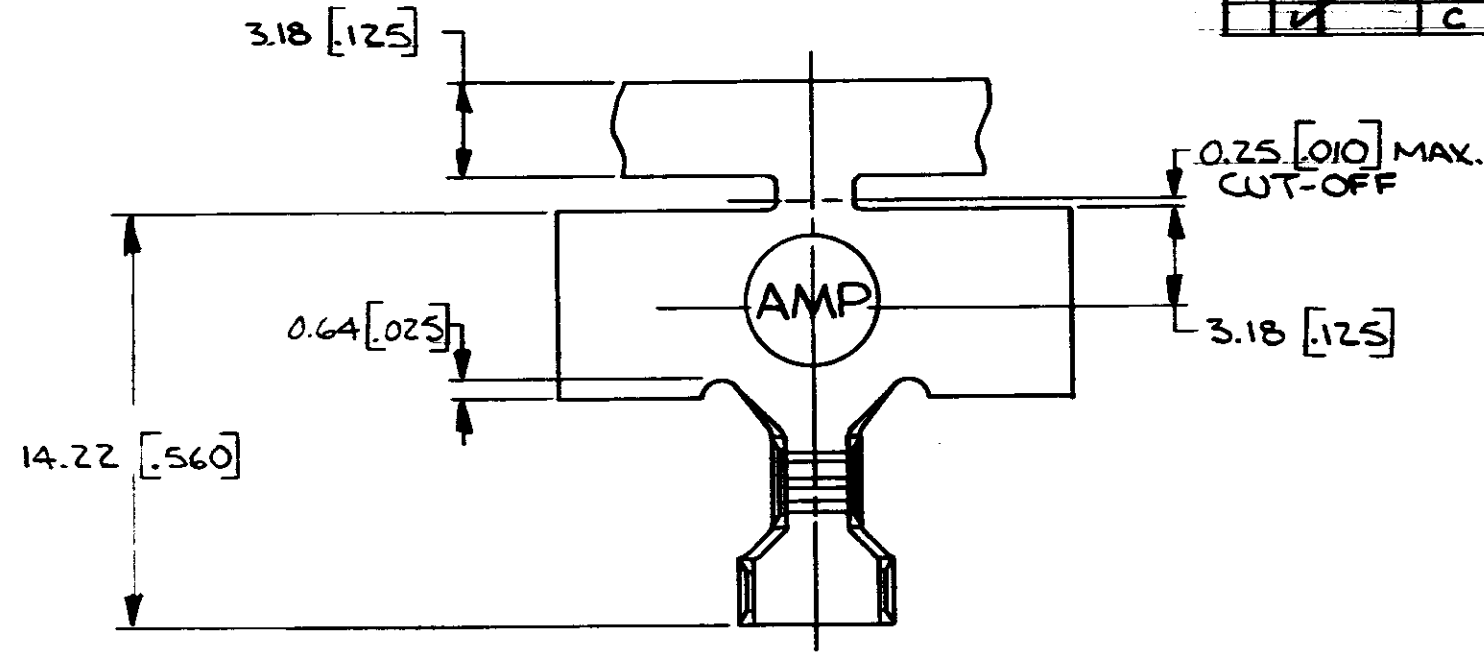


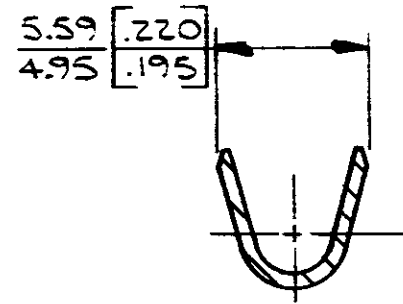
THIS DRAWING IS UNPUBLISHED. RELEASED FOR PUBLICATION . 19 .

© COPYRIGHT 19 BY AMP INCORPORATED, HARRISBURG, PA. ALL INTERNATIONAL RIGHTS RESERVED. AMP PRODUCTS MAY BE COVERED BY U.S. AND FOREIGN PATENTS AND/OR PATENTS PENDING.

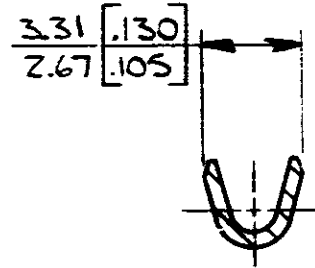
REVISIONS					
REV	ZONE	LTR	DESCRIPTION	DATE	APPROVED
1		A	REV. & REL. AF-0568 / PAR	11-2-84	RLT/GY
2		B	OBS PER AF-2304	4-13-88	TAS/BJ
3		C	REACTIVATE -1 AF-6801	7/17/90	DKS/



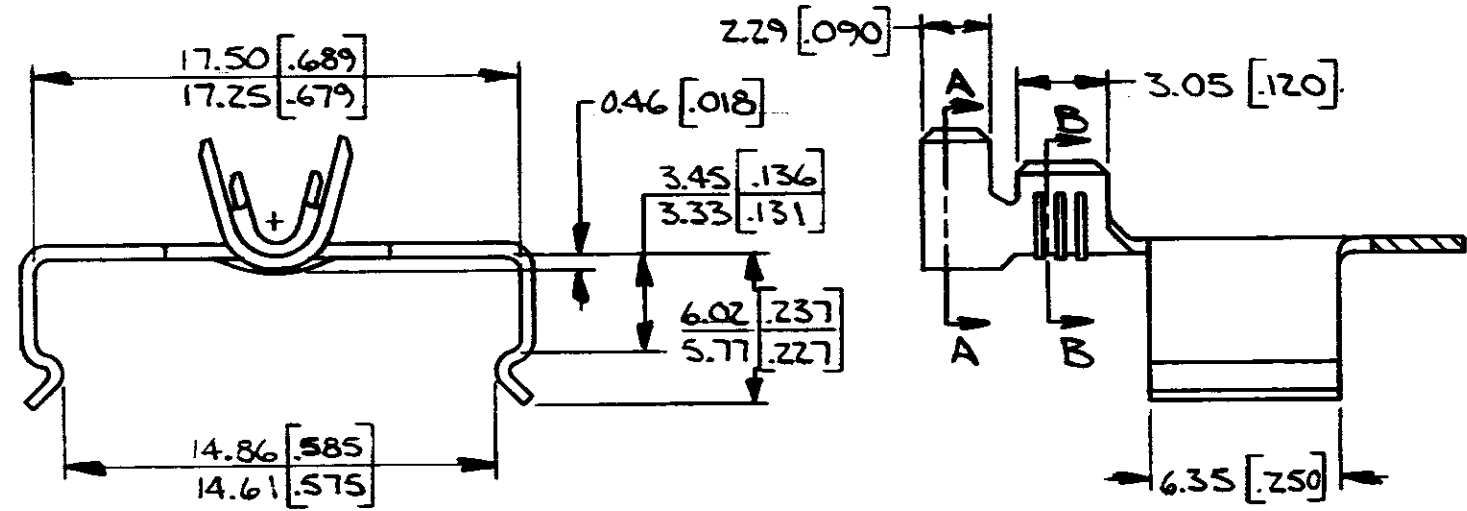
- DIMENSIONS IN BRACKETS ARE IN INCHES.
- CONTINUOUS STRIP ON REELS WITH TERMINALS ON 32.51 [1.28] CENTERS.



SECT. A-A



SECT. B-B



1.80-3.20 [0.071-0.126]		0.3-0.9mm ² [#22-18]		63361-1	
INSULATION RANGE		WIRE RANGE		PART NO	
UNLESS OTHERWISE SPECIFIED DIMENSIONS ARE IN INCHES. TOLERANCES ON: DECIMALS ±0.25 [0.010] ANGLES ±		CONTRACT NO 4-25-84		AMP AMP INCORPORATED Harrisburg, Pa.	
		CHK G Yetter 3/30/84			
MATERIAL BRASS 0.46 [0.018] THK		APPD D Schwed 4/30/84		NAME BRUSH HOLDER CLIP	
FINISH NONE		DSGN APPD		SIZE B	FSCM NO 00779
		OTHER APPD		DRAWING NO 63361	
				SCALE #	SHEET

METRIC