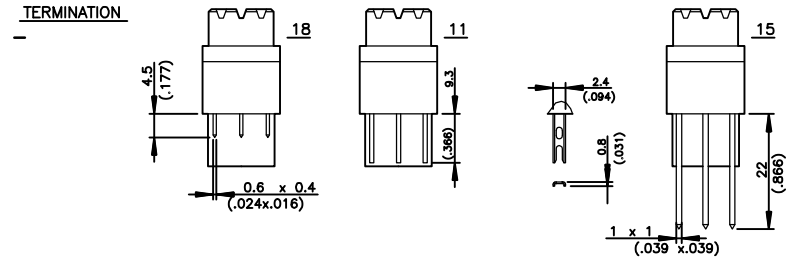
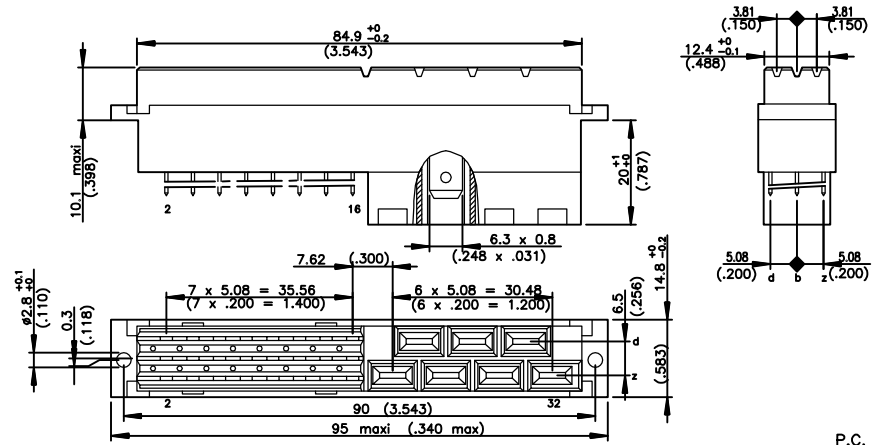




Copyright FCI



DIMENSIONS mm (inches)

**ELECTRICAL DATA**

- Current at AMB. 5.5 A at 20° / 4 A at 70°
- Contact resistance ≤15mΩ according to DIN 41640 Teil 4 test 2a
- Insulation resistance ≥10<sup>10</sup> MΩ according to DIN 41640 teil 7 test 3a
- TEST VOLTAGE according to DIN 41640 teil 21
- contact/contact 1550V eff
- contact/ground 1550V eff

**MECHANICAL DATA**

- Insertion force ≤60N
- Mechanical endurance -class 1 500 matings unmatings according to DIN41640 teil 21
- class 2 400 matings unmatings according to DIN41640 teil 21
- Material insulator Polyester UL94V0
- Material contacts Copper alloy
- Finishing contact surface Gold over nickel Lead Free
- Finishing termination Lead-Free
- Schock ≤40mΩ according to DIN 41640 Teil 14 test 6c
- Vibration -class 1 10-2000Hz/20g according to DIN 41640 Teil 15
- class 2 10-500Hz/5g according to DIN 41640 Teil 15

**ENVIRONMENTAL DATA**

- Climatic category According to DIN 41612
- Corrosion According to DIN 41612

**NOTE RoHS INFORMATION**

- The "LF" products meet European Union Directives and other country regulations as described in GS-22-008.
- The housing will withstand exposure to 260°C peak temperature for 3.5 seconds in a wave solder application with a 1.6mm minimum thick circuit board.
- Packaging spec:see GS-14-920

PART NUMBER	5159	002	31	9	LF
MIXED STYLE F24/H7					
NUMBER OF CONTACTS					
TERMINATION					
24 straight spills + 7 foston	18				
24 hand solder + 7 foston	11				
24 W.W 3 wraps	15				
PERFORMANCE CLASS					
DIN 41612 class 2	3				
DIN 41612 class 1	4				
CONTACT TERMINATION					
5.08 x 5.08					
CONTACT ARRANGEMENT					
Row z,b and d with contacts (24 hand solder)	111				
Row z and d with contacts (16 hand solder)	110				
Row z and b with contacts (16 hand solder)					
LEAD-FREE					

www.fciconnect.com			surface	tolerance std	projection	mm
			ISO 1302	ISO 406 ISO 110		mm
TOLERANCES UNLESS OTHERWISE SPECIFIED						
Dr	PESSON	2006/02/21	ANGULAR	0.X	±0.1	size
Eng	PESSON	2006/02/21	LINEAR	0.XX	±0.1	A3
Chr	LEGARE	2006/02/21	0.XX ±2'	0.XXX	±0.1	Scale 1:1
Appr	LEGARE	2006/02/21	Product family	DIN POWER	Spec ref	ECN F12-0053
			RECEP MEDIUM HIGHT POWER		dwg no	Rev.
			MIXED STYLE F24/H7		C01-5159-0039	H
			catalog no	CUSTOMER	sheet	1 of 1