

# SPRING & BUTTON CONTACTS

- Economical and reliable contacts are ideal for molded cases with self contained battery compartments
- "Solder tab" design for either wire lead or PC mounting
- Unique spring contacts adjust to variations in battery lengths
- Reliable spring contacts assure low contact resistance and a dependable connection
- Space saving, economical, excellent mechanical construction



Refer to page 35 for Battery Contact Layout & Mounting Details

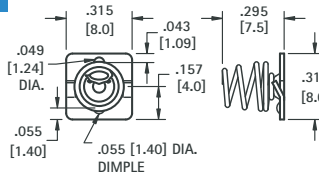
**MATERIAL:**

**Plate:** .020 (.51) Steel, Nickel Plate **Spring:** Spring Steel, Nickel Plate

**"AAA" · "AAAA" · "N" · "12V"**



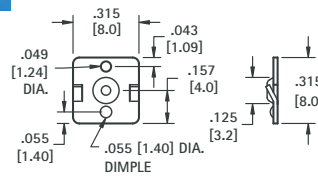
(-) NEGATIVE SPRING



**CAT. NO. 5203**



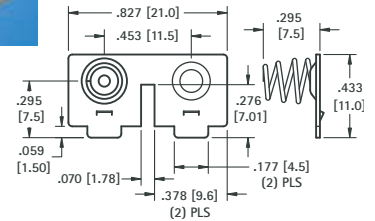
(+) POSITIVE BUTTON



**CAT. NO. 5225**



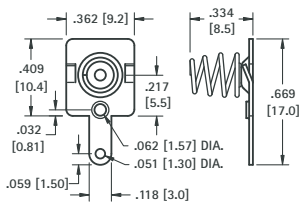
DUAL CONTACT (RIGHT)



**CAT. NO. 5213**



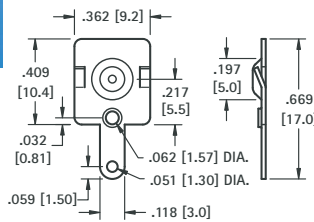
(-) NEGATIVE SPRING WITH TAB



**CAT. NO. 5204**



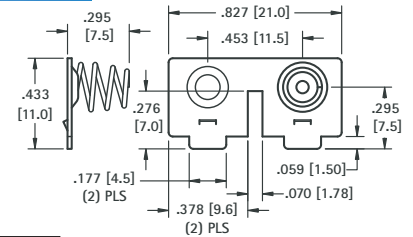
(+) POSITIVE BUTTON WITH TAB



**CAT. NO. 5226**



DUAL CONTACT (LEFT)

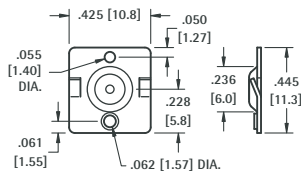


**CAT. NO. 5214**

**"AA" · "CR2" · "A" · 17-19mm**



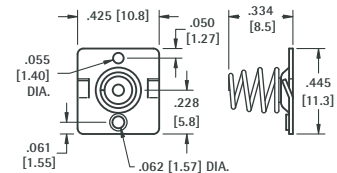
(+) POSITIVE BUTTON



**CAT. NO. 5224**



(-) NEGATIVE SPRING

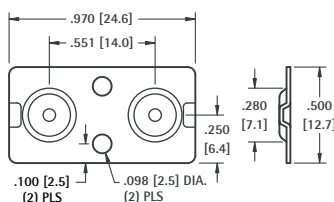


**CAT. NO. 5202**

**"AA"**



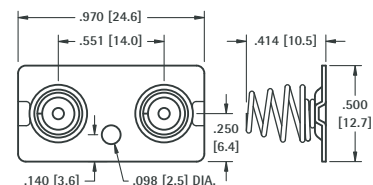
DUAL BUTTON CONTACT



**CAT. NO. 5227**



DUAL SPRING CONTACT



**CAT. NO. 5228**