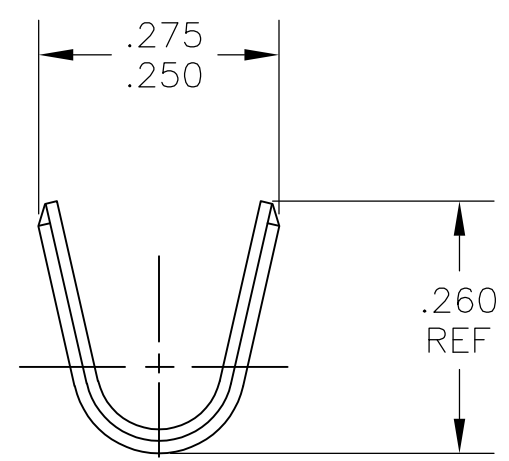
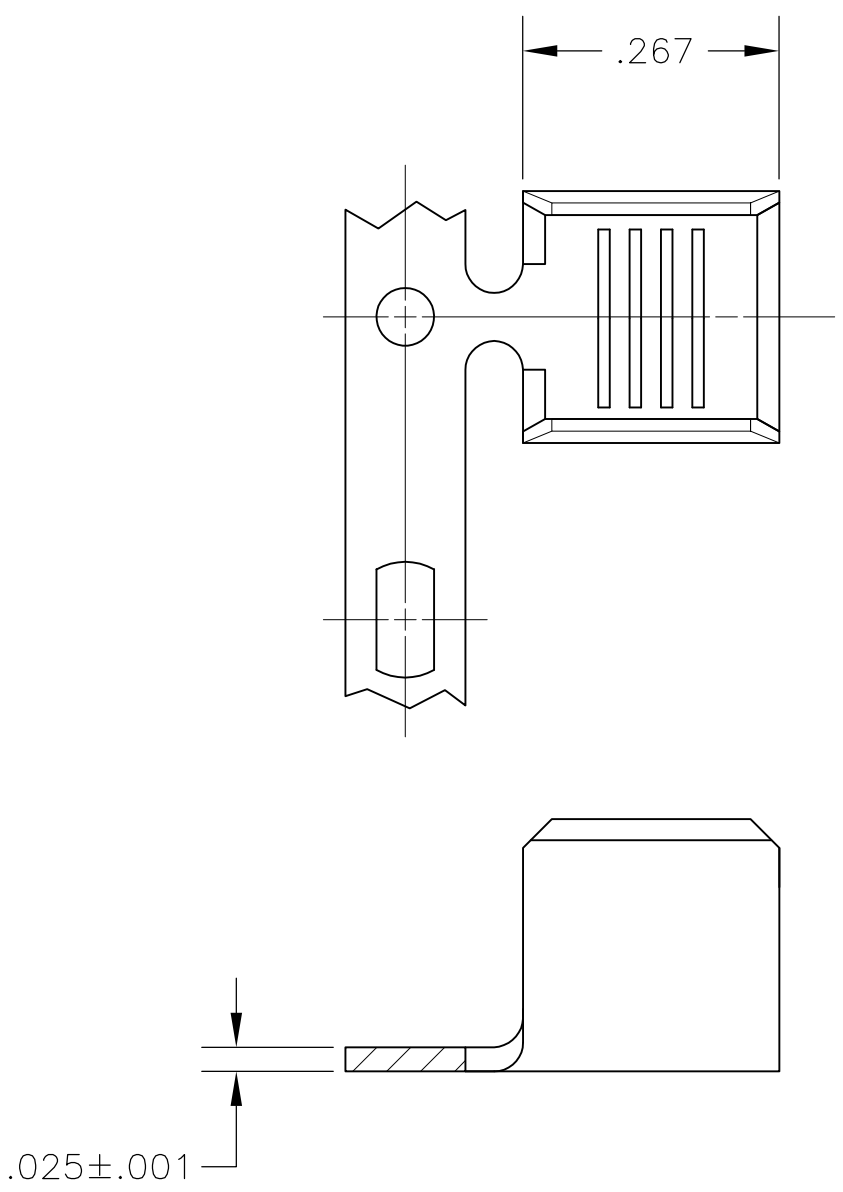


THIS DRAWING IS UNPUBLISHED. RELEASED FOR PUBLICATION
 © COPYRIGHT BY TYCO ELECTRONICS CORPORATION. ALL RIGHTS RESERVED.

LOC	DIST	REVISIONS			
P	LTR	DESCRIPTION	DATE	DWN	APVD
AF	50	C1	REVISED PER ECO-09-024717	04NOV09	KK AEG

- 1 CONTINUOUS STRIP ON REEL.
- 2 CRIMP WIDTH—.180, F TYPE
- 3 CRIMP HEIGHT ±.002 = $\frac{CMA+23100}{285700}$
- 4 WIRE RANGE IS 8,500-14,000 CMA
- 5 OBSOLETE PARTS: OBSOLETE CIS STREAMLINING PER D.RENAUD/D.SINISI



5 OBSOLETE	.000080 MIN TIN PLATE	1217967-2
	—	1217967-1
	FINISH	PART NO

THIS DRAWING IS A CONTROLLED DOCUMENT.		DWN jr_ruth 09JUN03	Tyco Electronics Corporation Harrisburg, Pa 17105-3608	
DIMENSIONS: INCHES	TOLERANCES UNLESS OTHERWISE SPECIFIED:	CHK G PORTA 09JUN03	NAME SPLICE	
	0 PLC ± -	APVD G PORTA 09JUN03	PRODUCT SPEC -	
	1 PLC ± -	PRODUCT SPEC	APPLICATION SPEC -	
MATERIAL H04 BRASS	FINISH SEE TABLE	—	SIZE A3	CAGE CODE 00779
		WEIGHT —	DRAWING NO C-1217967	RESTRICTED TO —
CUSTOMER DRAWING			SCALE 5:1	SHEET 1 OF 1
			REV C1	