

ITEM	PART#	DESCRIPTION	QTY	UOM
A	510210300	PicoBlade1.25 Rec Hsg 3P	1	PC
B	500588000	PicoBlade1.25 Crimp Rec Term Chain Tin	3	PC
C	--	Blank label 12.7x35.5mm (WHT:12.7mm) HF	1	PC
D	510470300	PicoBlade1.25 Plug Hsg 3P	1	PC
E	501338000	PicoBlade1.25 Crimp Plug Term Chain	3	PC

FROM	TO	DESCRIPTION	COLOR
A1	D3	CABLE 28 AWG UL 1061 BLACK	BLACK
A2	D2	CABLE 28 AWG UL 1061 BLACK	BLACK
A3	D1	CABLE 28 AWG UL 1061 BLACK	BLACK

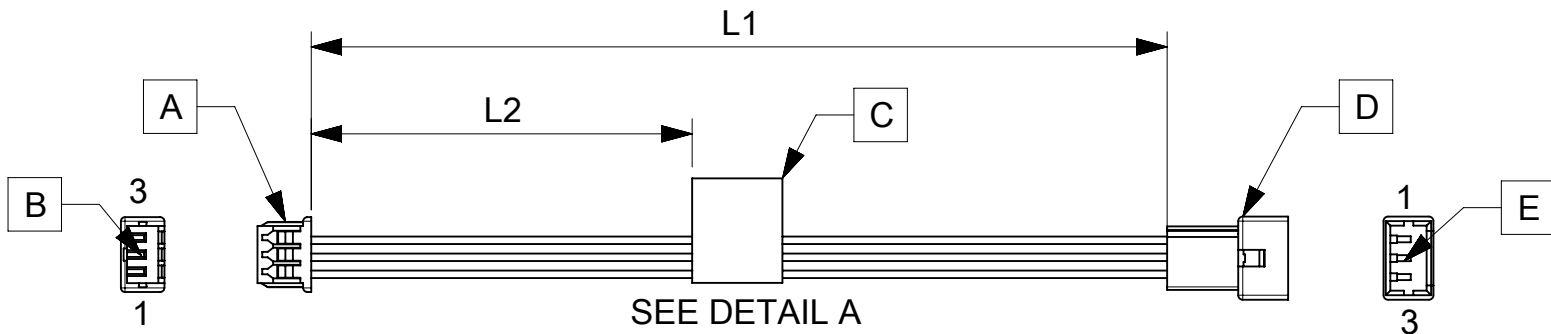
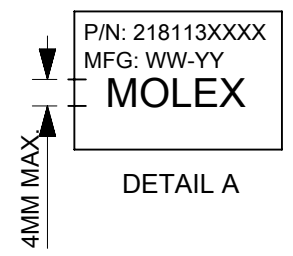


TABLE			
PART NUMBER	L1	L2 (REF)	TITLE
2181130300	75±5	30	3 CIRCUIT PICOBLADE R:P CABLE 75MM
2181130301	150±6	70	3 CIRCUIT PICOBLADE R:P CABLE 150MM
2181130302	225±6	105	3 CIRCUIT PICOBLADE R:P CABLE 225MM
2181130303	300±8	145	3 CIRCUIT PICOBLADE R:P CABLE 300MM
2181130304	425±8	205	3 CIRCUIT PICOBLADE R:P CABLE 425MM



- NOTES
1. Cable assembly to be tested 100% for continuity and polarity.
 2. Connector view shown is from mating side.
 3. Label text must be 2mm max. in height with Arial font.
 4. Label must be wrapped in flag type on the cables.

REVISION			
DATE	REV	DESCRIPTION	CHANGER
04/03/2021	A	INITIAL RELEASE	ARAJU

DOCUMENT STATUS	P1	RELEASE DATE	2021/03/26	04:03:46
-----------------	----	--------------	------------	----------

FUNCTIONAL SYMBOLS $\frac{E}{A} = 0$ $\frac{E}{E} = 0$ $\frac{E}{P} = 0$ DIVISIONAL SYMBOLS	THIS DRAWING CONTAINS INFORMATION THAT IS PROPRIETARY TO MOLEX ELECTRONIC TECHNOLOGIES, LLC AND SHOULD NOT BE USED WITHOUT WRITTEN PERMISSION		CURRENT REV DESC:					
	DIMENSION UNITS	SCALE	GENERAL TOLERANCES (UNLESS SPECIFIED)					
	mm	NTS	ANGULAR TOL ± °					
	4 PLACES ±		3 PLACES ±					
3 PLACES ±		2 PLACES ±		EC NO: 659320	2021/03/04			
2 PLACES ±		1 PLACE ±		DRWN: ARAJU		2021/03/26		
0 PLACES ±		INITIAL REVISION:		CHK'D: RDESAI01	2021/03/26			
DRAFT WHERE APPLICABLE MUST REMAIN WITHIN DIMENSIONS		THIRD ANGLE PROJECTION	DRAWING	SERIES	DOCUMENT NUMBER	DOC TYPE	DOC PART	REVISION
			A4-SIZE	218113	2181130300	PSD	000	A
					MATERIAL NUMBER	CUSTOMER	SHEET NUMBER	
					SEE TABLE	GENERAL MARKET	1 OF 1	