

# bq24018 (bqTINY™)

## Contents

1	Introductions .....	1
2	Test Summary .....	2
3	Reference .....	4
4	Schematic, Physical Layouts, and Bill of Materials.....	4

## List of Figures

1	EVM Schematic Diagram .....	5
2	Assembly View .....	6
3	Top Layer .....	6
4	Bottom Layer .....	7

## List of Tables

1	Performance Specification Summary .....	2
2	Bill of Materials .....	7

## 1 Introductions

This user's guide describes the bq24018 (bqTINY™) evaluation module. The EVM provides a convenient method for evaluating the performance of a charge-management solution for portable applications using the bq24018 product family. A complete designed and tested charger is presented. The charger is designed to deliver up to 1 A of continuous charge current, but is programmed for 0.7 A, for single-cell Li-Ion or Li-Pol applications using a dc power supply.

### 1.1 Background

The bqTINY series are highly integrated Li-Ion and Li-Pol linear charge-management devices targeted at space-limited portable applications. In a small package, the bqTINY series offer integrated PowerFET and current sensor, reverse blocking diode, high-accuracy current and voltage regulation, charge status, and charge termination.

The bqTINY charges the battery in three phases: conditioning, constant current, and constant voltage. Charge terminates on the basis of minimum current. An internal charge-timer provides backup safety for charge termination. The bqTINY automatically restarts the charge if the battery voltage falls below an internal threshold and automatically enters sleep mode when  $V_{CC}$  supply is removed.

### 1.2 Performance Specification Summary

This section summarizes the performance specifications of the EVM. [Table 1](#) gives the performance specifications of the EVM.

**Table 1. Performance Specification Summary**

Specification		Test Conditions	Min	Typ	Max	Unit
$V_{I(DC)}$	Input dc voltage		$V_{REG} + 0.5$	5.0	5.4 <sup>(1)</sup>	V
$I_{O(CHG)}$	Battery charge current	See <sup>(1)</sup>		0.7	1	A
	Power dissipation	$(V_{(DC+)} - V_{(BAT+)}) \times I_{(CHG)}$			1.5	W

<sup>(1)</sup> This input voltage maximum is a function of the maximum allowable power dissipation on the IC. The current level is programmed for 0.7 A. If the programmed charge is changed, then the maximum input voltage must be adjusted.  $P_{maxIC} = 1.5$  Watt =  $I_{CHG}(V_{DC+} - V_{BAT+})$ .

## 2 Test Summary

This chapter describes the test setups used and the tests performed in evaluating the EVM.

**Setup:** The bq24018 EVM board requires a single-cell Li-Ion or Li-Pol battery pack and a 5-VDC, 1-A power source to provide input power. The test setup connections and jumper setting selections are configured for a stand-alone evaluation but can be changed to interface with external hardware, such as a microcontroller.

### 2.1 I/O and Jumper Connections

Jack	Connect To:
J1-DC+	Power supply positive, preset to 5.0VDC, 1-A current limit
J1-DC-	Power supply ground
J2-BAT+	Positive battery pack terminal
J2-BAT-	Negative battery pack terminal
J2-TTE	NC required — pulled down with 10 kΩ resistor on the EVM
J2-BAT-	NC
J3-STAT1	External hardware if J4-EXT is jumpered (not jumpered from factory)
J3-STAT2	External hardware if J5-EXT is jumpered (not jumpered from factory)
J3-DC-	Return for J3 signals
J3- $\overline{CE}$	NC required — pulled down with 10-kΩ resistor on the EVM
J4 (Jumper)	STAT1 indication location — LED (EVM)   EXT
J5 (Jumper)	STAT2 indication location — LED (EVM)   EXT

### 2.2 Test Procedure

Set up the evaluation board as described above, by making the necessary I/O connections and jumper selections. **Before test and evaluation, it is important to verify that the maximum power dissipation on the IC is not exceeded:  $P_{(MAX)} = 1.5$  watts.**

1. Turn on the power supply, which was preset to 5.0 VDC and 1 A for the current-limit setting.
2. The bq24018 enters preconditioning mode if the battery is below the  $V_{(LOWV)}$  threshold. In this mode, the bq24018 precharges the battery with a low current (typically  $I_{O(CHG)}/10 = 0.7A/10 = 70$  mA) until the battery voltage reaches the  $V_{(LOWV)}$  threshold or until the precharge timer expires. If the timer expires, then the charge current is terminated, the bq24018 enters fault mode, and both LEDs turn off. Toggling input power or battery replacement resets fault mode.
3. Once the battery voltage is above the  $V_{(LOWV)}$  threshold, the battery enters fast-charge mode. This EVM is programmed for 0.7 A of fast-charging current.
4. Once the battery reaches voltage regulation (4.36 V), the current tapers down as the battery reaches its full capacity.
5. The battery remains at the fast-charge mode until the fast-charge timer expires, the charge taper time expires, or the charge termination threshold is reached.
6. If the battery discharges to the recharge threshold, the charger starts fast charging.

In place of a battery, a source meter that can sink current can easily be adjusted to test each mode.

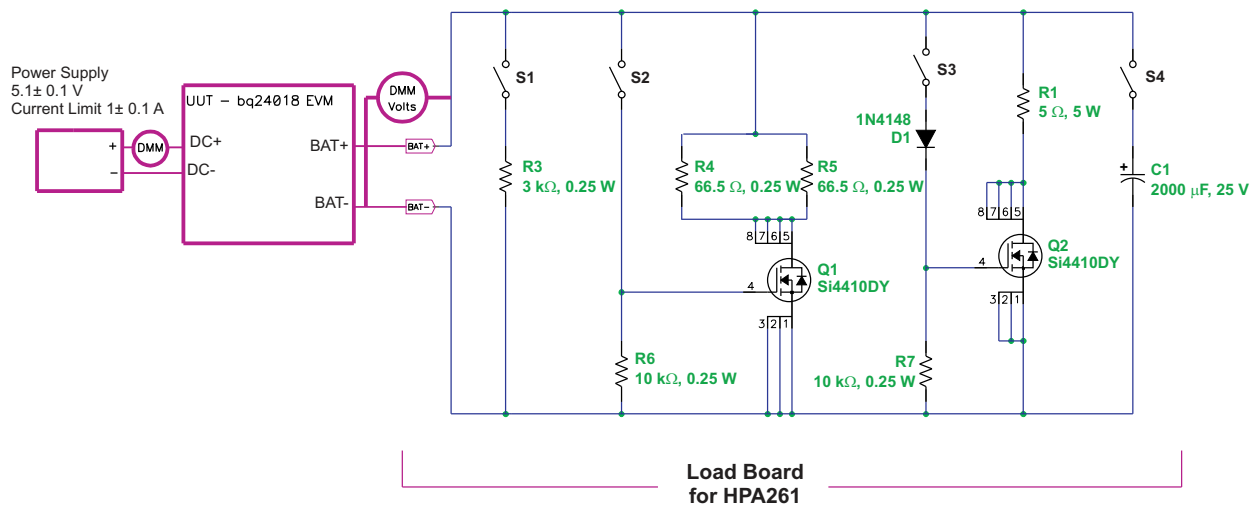
Another way to briefly see each mode on a scope is to connect a 1-mF capacitor and a 10-k $\Omega$  resistor on the output in place of a battery to observe the power-up and cycling between voltage regulation and fast charge via the refresh threshold.

**Note:** Because of the battery-detection circuit, it is not possible to switch-in static load resistors to jump between regulation and constant-current modes. An alternate procedure described below uses a dynamic load to replace the battery circuit. That procedure allows testing of each mode.

This is an alternative way of testing the EVM using a dynamic load board in place of a battery. The circuit is adjusted to work with the displayed parts and their inherent thresholds. The sequence of the test procedure is important because of the active battery-detection circuit, refresh feature, and precharge and fast-charge current levels (switching load in or out has different results in different modes). No damage should occur, but results might be different than anticipated if the procedure is altered.

### 2.2.1 Equipment

1. Power source: current-limited 5-V lab supply with its current limit set to 1.0 A  $\pm$ 0.1 Amp
2. Two Fluke 75, equivalent or better
3. Oscilloscope – TDS220 or better
4. Load test board:



### 2.2.2 Equipment Setup

1. Connect the load board to the BAT+ and BAT-. Set SW1 through SW4 in the closed position.
2. Connect a voltage meter to the BAT+/BAT- output to monitor the output voltage (range 0 to 5 V).
3. Set the lab supply for 5.1 V  $\pm$ 0.1VDC, 1.0  $\pm$ 0.1 A current limit, and then turn off the supply. Connect the source supply to a current meter and to J1, noting polarity. (may use an internal source current meter if it has 5% or better accuracy.)
4. Install shunt jumpers on the **LED** pins 1 and 2 of each header J4 and J5.

### 2.2.3 Procedure

1. Ensure that EQUIPMENT SETUP steps are followed. (switches should be in the closed position, shunts installed, and power source set to 5.1 V/±0.1 VDC.) Turn on the power source.
2. Verify the red LED is lit.
3. Verify output voltage charges to  $2.7 \pm 0.2V$ .
4. Open switch, SW2, and then close switch, SW2
5. Verify output voltage settles at  $3.5 \pm 0.2V$ .
6. Verify that the input current is  $0.73 \pm 0.08$  Amps
7. Open switch, SW3
8. Verify that the input current is  $0.13 \pm 0.03$  Amps
9. Verify the output voltage,  $4.360V \pm 0.050$  VDC
10. Open switch SW2.
11. Verify, with a scope (1V/div, 200ms/div), that the output charges to  $4.4V \pm 0.1V$  and discharges to  $3.6V \pm 0.5V$  at a frequency of  $1Hz \pm 0.5$  Hz.
12. Verify that the LEDs flash between RED (D1) and GREEN (D2, mostly on green).
13. Close switch, SW2 and SW3 (all switches should be closed now) and power down supply.
14. EVM is good if all tests have passed. Remove I/O connections.
15. If there are more EVMs to test, loop back to 7.1 and continue until all units have been tested.

### 3 Reference

1. bq2401x data sheet ([SLUS530](#))

### 4 Schematic, Physical Layouts, and Bill of Materials

This chapter contains the schematic diagram, the board layouts and assembly drawings, and the bill of materials required for the EVM.

### 4.1 Schematic

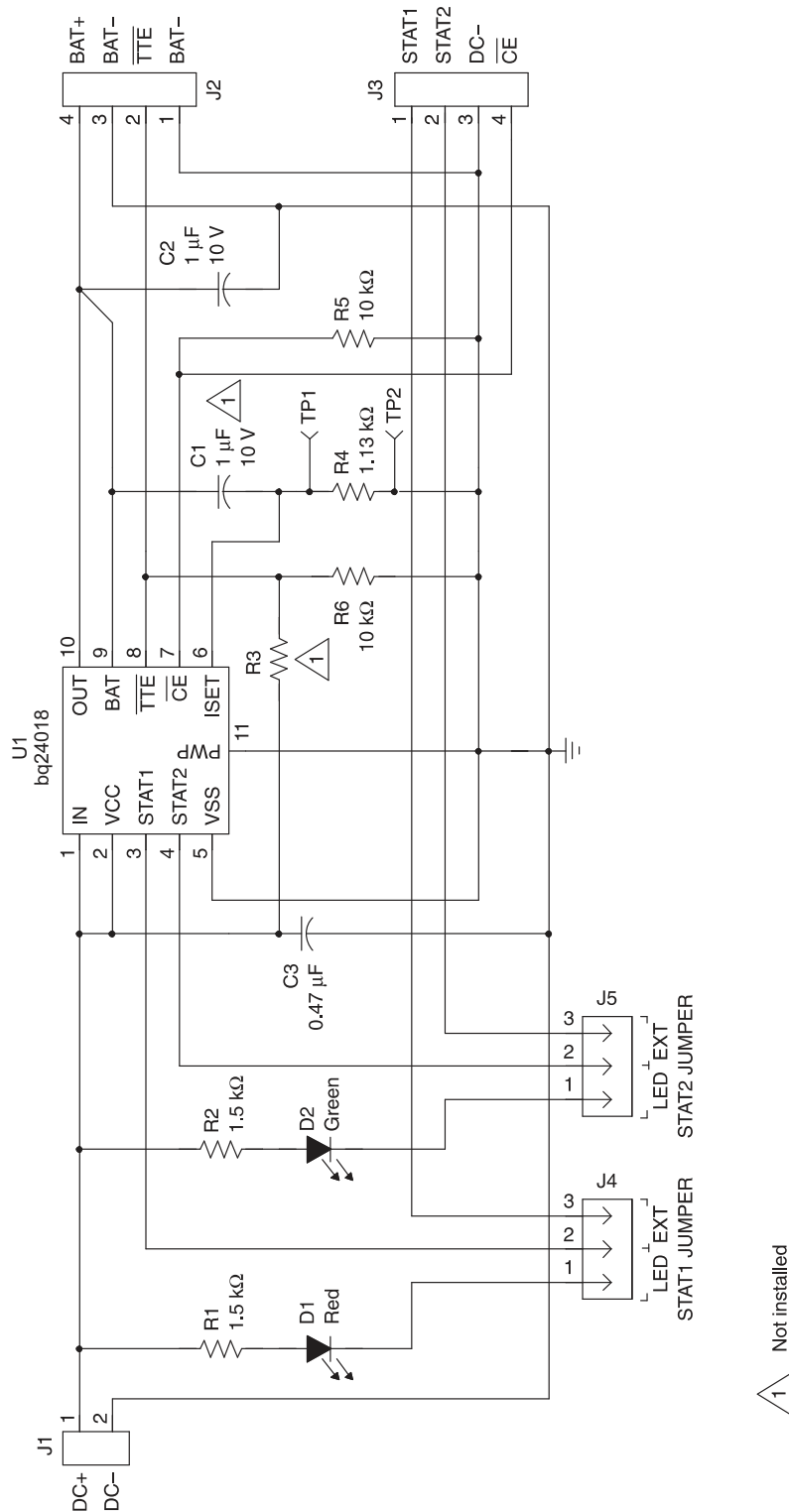


Figure 1. EVM Schematic Diagram

## 4.2 Physical Layouts

### 4.2.1 Board Layout

Figure 2 shows the assembly view of the EVM. Figure 3 shows the top layer. Figure 4 shows the bottom layer.

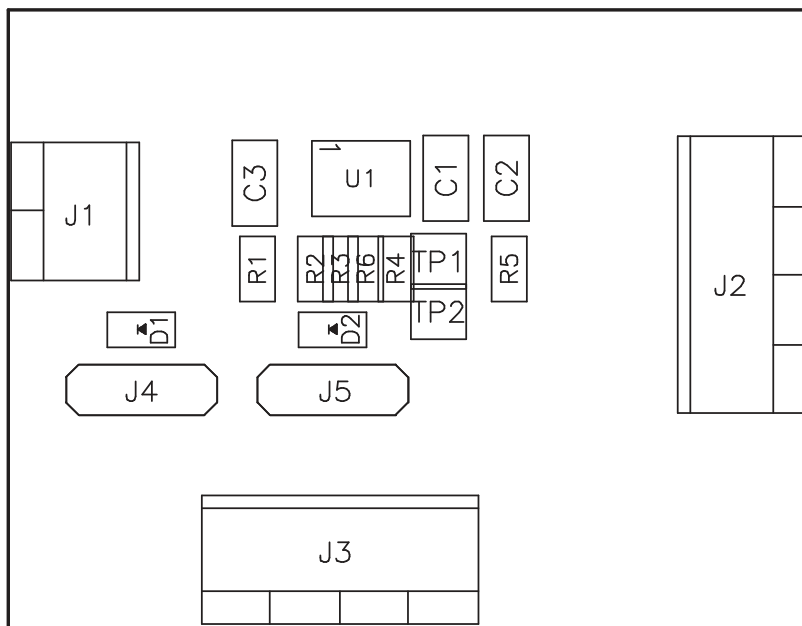


Figure 2. Assembly View

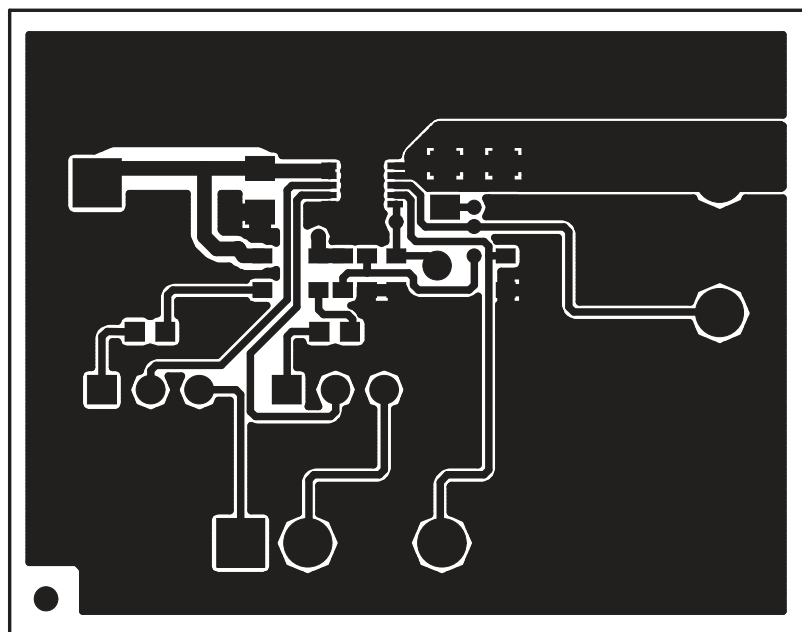


Figure 3. Top Layer

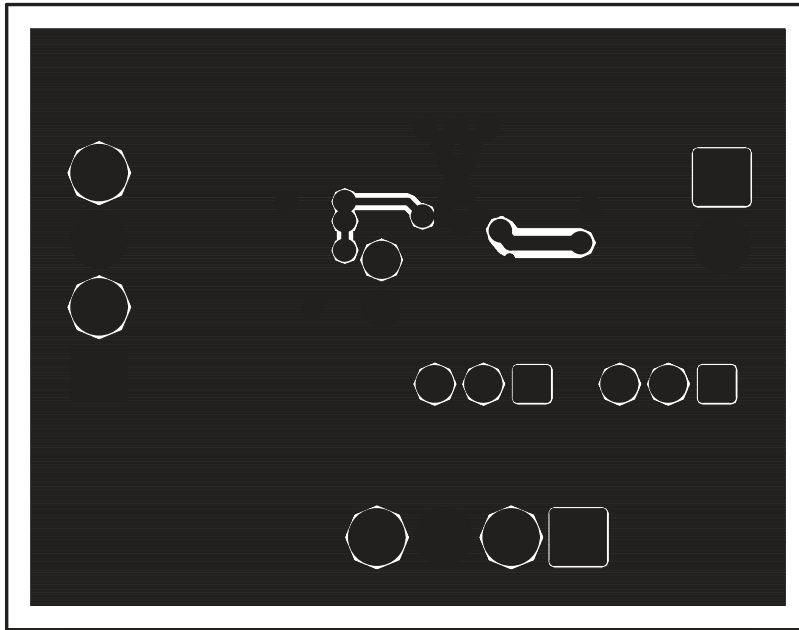


Figure 4. Bottom Layer

### 4.3 Bill of Materials

Table 2 lists materials required for the EVM.

Table 2. Bill of Materials

Item Number	bq24018	Ref Des	Description	Size	MFR	Part Number
1	0	C1	Capacitor, ceramic, X5R, 1 $\mu$ F, 10 V	805	Panasonic	ECJ-2YB1A105K
2	1	C2	Capacitor, ceramic, X5R, 1 $\mu$ F, 10 V	805	Panasonic	ECJ-2YB1A105K
3	1	C3	Capacitor, ceramic, X7R, 0.47 $\mu$ F, 16 V	805	Panasonic	ECJ-2YB1C474K
4	1	D1	Diode, LED, red, 1.8 V, 20 mA, 20 mcd	603	Lite-On	160-1181-1-ND
5	1	D2	Diode, LED, green, 2.1 V, 20 mA, 6 mcd	603	Lite-On	160-1183-1-ND
6	1	J1	Terminal block, 2 pin, 6 A, 3,5 mm	0.27 $\times$ 0.25	OST	ED1514
7	2	J2, J3	Terminal block, 4 pin, 6 A, 3,5 mm	0.55 $\times$ 0.25	OST	ED1516
8	2	J4, J5	Header, 3 pin, 100 mil spacing, (36-pin strip)	0.100 $\times$ 3	Sullins	PTC36SAAN
9	2	R1, R2	Resistor, chip, 1.5 k $\Omega$ , 1/16 W, 1%	603	Std	Std
10	0	R3	Resistor, chip, 1 M $\Omega$ , 1/16 W, 1%	602	Std	Std
11	2	R5, R6	Resistor, chip, 10 k $\Omega$ , 1/16 W, 1%1	603	Std	Std
12	1	R4	Resistor, chip, 1.3 k $\Omega$ , 1/16 W, 1%	603	Std	Std
13	1	U1	IC, single Li-Ion/Li-Polymer, charge manager	MLP10	TI	bq24018DRC
14	2	—	Shunt, 100-mil, black	0.100	3M	929950-00
15	1	—	PCB, bq24018, 1.6 in $\times$ 1.3 in $\times$ 0.031 in		Any	HPA261

**Notes:** 1) These assemblies are ESD sensitive; ESD precautions must be observed.  
 2) These assemblies must be clean and free from flux and all contaminants. Use of no-clean flux is not acceptable.  
 3) These assemblies must comply with workmanship standards IPC-A-610 Class 2.  
 4) Reference designators marked with an asterisk (\*\*) cannot be replaced by substitutes. All other components can be replaced with equivalent manufacturer components.

## EVALUATION BOARD/KIT IMPORTANT NOTICE

Texas Instruments (TI) provides the enclosed product(s) under the following conditions:

This evaluation board/kit is intended for use for **ENGINEERING DEVELOPMENT, DEMONSTRATION, OR EVALUATION PURPOSES ONLY** and is not considered by TI to be a finished end-product fit for general consumer use. Persons handling the product(s) must have electronics training and observe good engineering practice standards. As such, the goods being provided are not intended to be complete in terms of required design-, marketing-, and/or manufacturing-related protective considerations, including product safety and environmental measures typically found in end products that incorporate such semiconductor components or circuit boards. This evaluation board/kit does not fall within the scope of the European Union directives regarding electromagnetic compatibility, restricted substances (RoHS), recycling (WEEE), FCC, CE or UL, and therefore may not meet the technical requirements of these directives or other related directives.

Should this evaluation board/kit not meet the specifications indicated in the User's Guide, the board/kit may be returned within 30 days from the date of delivery for a full refund. **THE FOREGOING WARRANTY IS THE EXCLUSIVE WARRANTY MADE BY SELLER TO BUYER AND IS IN LIEU OF ALL OTHER WARRANTIES, EXPRESSED, IMPLIED, OR STATUTORY, INCLUDING ANY WARRANTY OF MERCHANTABILITY OR FITNESS FOR ANY PARTICULAR PURPOSE.**

The user assumes all responsibility and liability for proper and safe handling of the goods. Further, the user indemnifies TI from all claims arising from the handling or use of the goods. Due to the open construction of the product, it is the user's responsibility to take any and all appropriate precautions with regard to electrostatic discharge.

**EXCEPT TO THE EXTENT OF THE INDEMNITY SET FORTH ABOVE, NEITHER PARTY SHALL BE LIABLE TO THE OTHER FOR ANY INDIRECT, SPECIAL, INCIDENTAL, OR CONSEQUENTIAL DAMAGES.**

TI currently deals with a variety of customers for products, and therefore our arrangement with the user **is not exclusive.**

TI assumes **no liability for applications assistance, customer product design, software performance, or infringement of patents or services described herein.**

Please read the User's Guide and, specifically, the Warnings and Restrictions notice in the User's Guide prior to handling the product. This notice contains important safety information about temperatures and voltages. For additional information on TI's environmental and/or safety programs, please contact the TI application engineer or visit [www.ti.com/esh](http://www.ti.com/esh).

No license is granted under any patent right or other intellectual property right of TI covering or relating to any machine, process, or combination in which such TI products or services might be or are used.

### FCC Warning

This evaluation board/kit is intended for use for **ENGINEERING DEVELOPMENT, DEMONSTRATION, OR EVALUATION PURPOSES ONLY** and is not considered by TI to be a finished end-product fit for general consumer use. It generates, uses, and can radiate radio frequency energy and has not been tested for compliance with the limits of computing devices pursuant to part 15 of FCC rules, which are designed to provide reasonable protection against radio frequency interference. Operation of this equipment in other environments may cause interference with radio communications, in which case the user at his own expense will be required to take whatever measures may be required to correct this interference.

Mailing Address: Texas Instruments, Post Office Box 655303, Dallas, Texas 75265  
Copyright © 2007, Texas Instruments Incorporated

### EVM WARNINGS AND RESTRICTIONS

It is important to operate this EVM within the input voltage range of 0 V to 5.4 V and the output voltage range of 0 V to 4.25 V.

Exceeding the specified input range may cause unexpected operation and/or irreversible damage to the EVM. If there are questions concerning the input range, please contact a TI field representative prior to connecting the input power.

Applying loads outside of the specified output range may result in unintended operation and/or possible permanent damage to the EVM. Please consult the EVM User's Guide prior to connecting any load to the EVM output. If there is uncertainty as to the load specification, please contact a TI field representative.

During normal operation, some circuit components may have case temperatures greater than 60°C. The EVM is designed to operate properly with certain components above 60°C as long as the input and output ranges are maintained. These components include but are not limited to linear regulators, switching transistors, pass transistors, and current sense resistors. These types of devices can be identified using the EVM schematic located in the EVM User's Guide. When placing measurement probes near these devices during operation, please be aware that these devices may be very warm to the touch.

Mailing Address: Texas Instruments, Post Office Box 655303, Dallas, Texas 75265  
Copyright © 2007, Texas Instruments Incorporated



## IMPORTANT NOTICE

Texas Instruments Incorporated and its subsidiaries (TI) reserve the right to make corrections, modifications, enhancements, improvements, and other changes to its products and services at any time and to discontinue any product or service without notice. Customers should obtain the latest relevant information before placing orders and should verify that such information is current and complete. All products are sold subject to TI's terms and conditions of sale supplied at the time of order acknowledgment.

TI warrants performance of its hardware products to the specifications applicable at the time of sale in accordance with TI's standard warranty. Testing and other quality control techniques are used to the extent TI deems necessary to support this warranty. Except where mandated by government requirements, testing of all parameters of each product is not necessarily performed.

TI assumes no liability for applications assistance or customer product design. Customers are responsible for their products and applications using TI components. To minimize the risks associated with customer products and applications, customers should provide adequate design and operating safeguards.

TI does not warrant or represent that any license, either express or implied, is granted under any TI patent right, copyright, mask work right, or other TI intellectual property right relating to any combination, machine, or process in which TI products or services are used. Information published by TI regarding third-party products or services does not constitute a license from TI to use such products or services or a warranty or endorsement thereof. Use of such information may require a license from a third party under the patents or other intellectual property of the third party, or a license from TI under the patents or other intellectual property of TI.

Reproduction of TI information in TI data books or data sheets is permissible only if reproduction is without alteration and is accompanied by all associated warranties, conditions, limitations, and notices. Reproduction of this information with alteration is an unfair and deceptive business practice. TI is not responsible or liable for such altered documentation. Information of third parties may be subject to additional restrictions.

Resale of TI products or services with statements different from or beyond the parameters stated by TI for that product or service voids all express and any implied warranties for the associated TI product or service and is an unfair and deceptive business practice. TI is not responsible or liable for any such statements.

TI products are not authorized for use in safety-critical applications (such as life support) where a failure of the TI product would reasonably be expected to cause severe personal injury or death, unless officers of the parties have executed an agreement specifically governing such use. Buyers represent that they have all necessary expertise in the safety and regulatory ramifications of their applications, and acknowledge and agree that they are solely responsible for all legal, regulatory and safety-related requirements concerning their products and any use of TI products in such safety-critical applications, notwithstanding any applications-related information or support that may be provided by TI. Further, Buyers must fully indemnify TI and its representatives against any damages arising out of the use of TI products in such safety-critical applications.

TI products are neither designed nor intended for use in military/aerospace applications or environments unless the TI products are specifically designated by TI as military-grade or "enhanced plastic." Only products designated by TI as military-grade meet military specifications. Buyers acknowledge and agree that any such use of TI products which TI has not designated as military-grade is solely at the Buyer's risk, and that they are solely responsible for compliance with all legal and regulatory requirements in connection with such use.

TI products are neither designed nor intended for use in automotive applications or environments unless the specific TI products are designated by TI as compliant with ISO/TS 16949 requirements. Buyers acknowledge and agree that, if they use any non-designated products in automotive applications, TI will not be responsible for any failure to meet such requirements.

Following are URLs where you can obtain information on other Texas Instruments products and application solutions:

<b>Products</b>		<b>Applications</b>	
Amplifiers	<a href="http://amplifier.ti.com">amplifier.ti.com</a>	Audio	<a href="http://www.ti.com/audio">www.ti.com/audio</a>
Data Converters	<a href="http://dataconverter.ti.com">dataconverter.ti.com</a>	Automotive	<a href="http://www.ti.com/automotive">www.ti.com/automotive</a>
DSP	<a href="http://dsp.ti.com">dsp.ti.com</a>	Broadband	<a href="http://www.ti.com/broadband">www.ti.com/broadband</a>
Interface	<a href="http://interface.ti.com">interface.ti.com</a>	Digital Control	<a href="http://www.ti.com/digitalcontrol">www.ti.com/digitalcontrol</a>
Logic	<a href="http://logic.ti.com">logic.ti.com</a>	Military	<a href="http://www.ti.com/military">www.ti.com/military</a>
Power Mgmt	<a href="http://power.ti.com">power.ti.com</a>	Optical Networking	<a href="http://www.ti.com/opticalnetwork">www.ti.com/opticalnetwork</a>
Microcontrollers	<a href="http://microcontroller.ti.com">microcontroller.ti.com</a>	Security	<a href="http://www.ti.com/security">www.ti.com/security</a>
RFID	<a href="http://www.ti-rfid.com">www.ti-rfid.com</a>	Telephony	<a href="http://www.ti.com/telephony">www.ti.com/telephony</a>
Low Power Wireless	<a href="http://www.ti.com/lpw">www.ti.com/lpw</a>	Video & Imaging	<a href="http://www.ti.com/video">www.ti.com/video</a>
		Wireless	<a href="http://www.ti.com/wireless">www.ti.com/wireless</a>

Mailing Address: Texas Instruments, Post Office Box 655303, Dallas, Texas 75265  
Copyright © 2007, Texas Instruments Incorporated