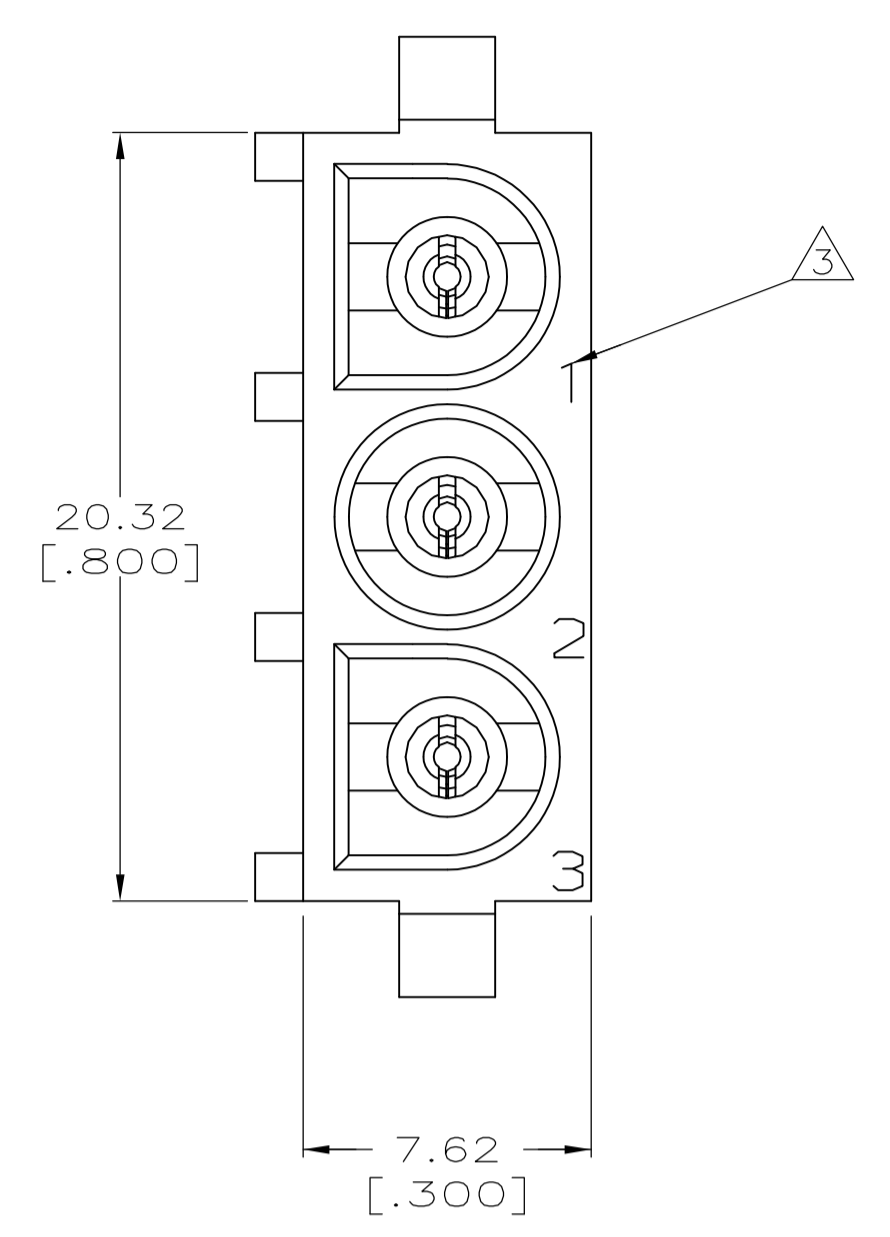
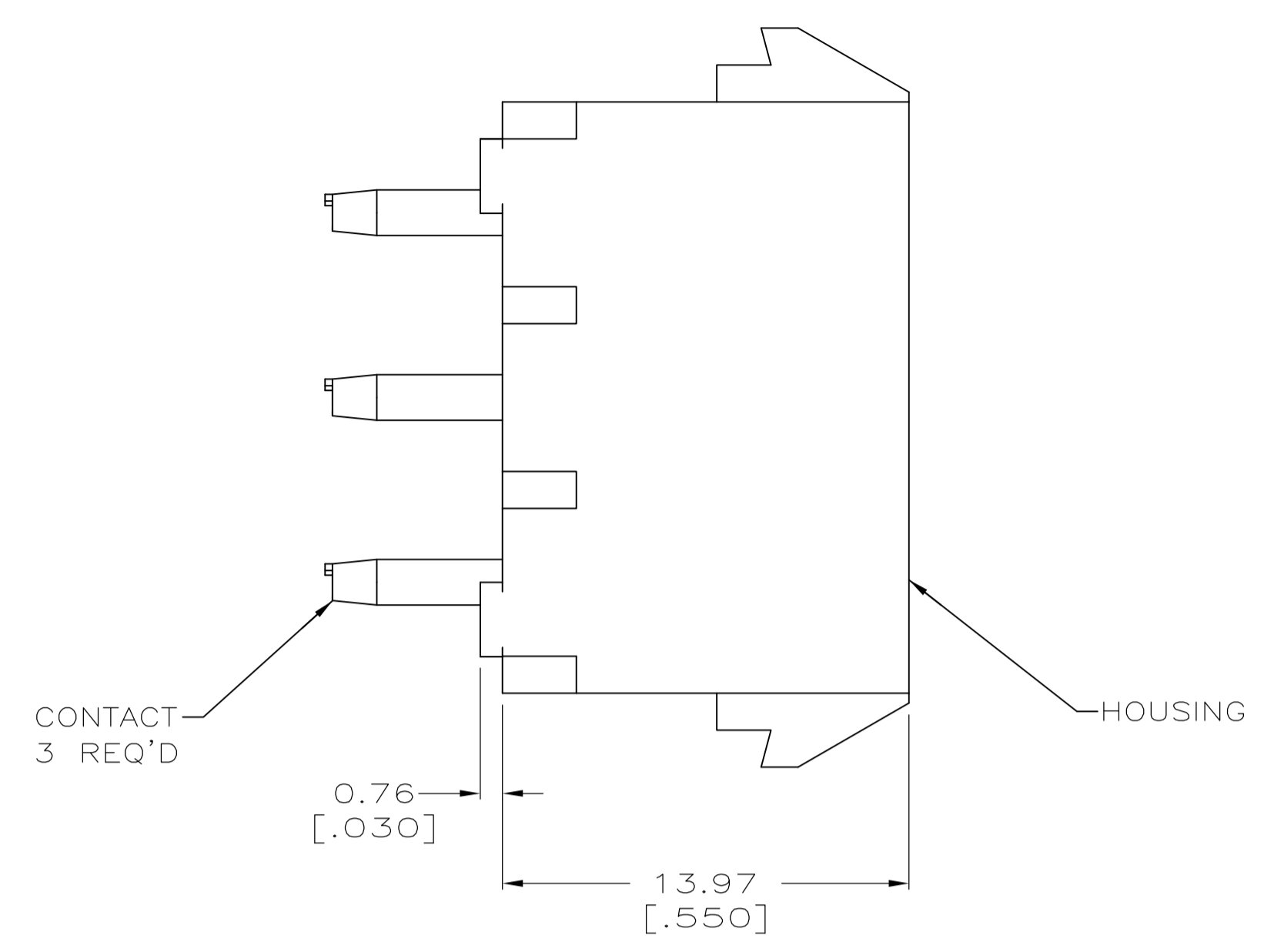
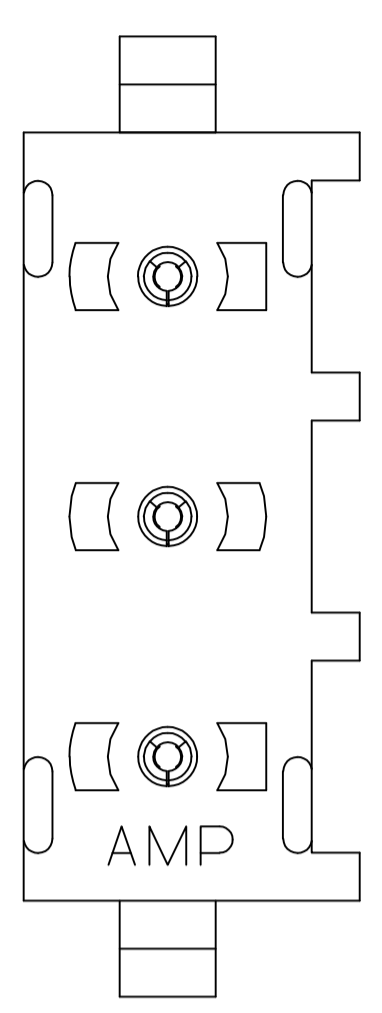
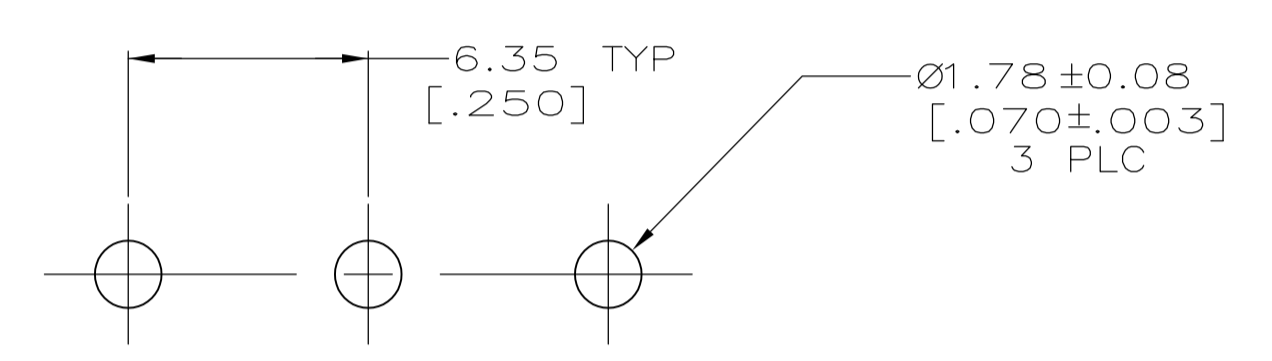


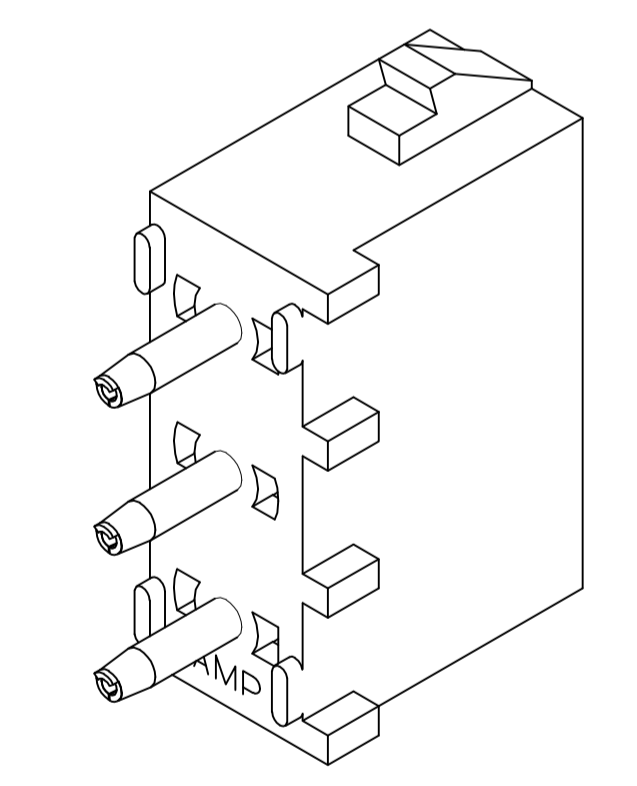
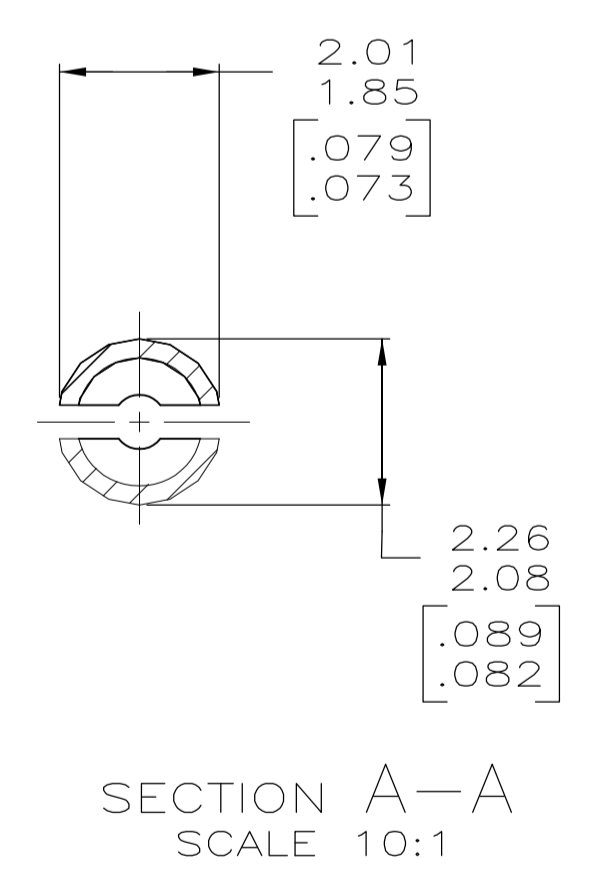
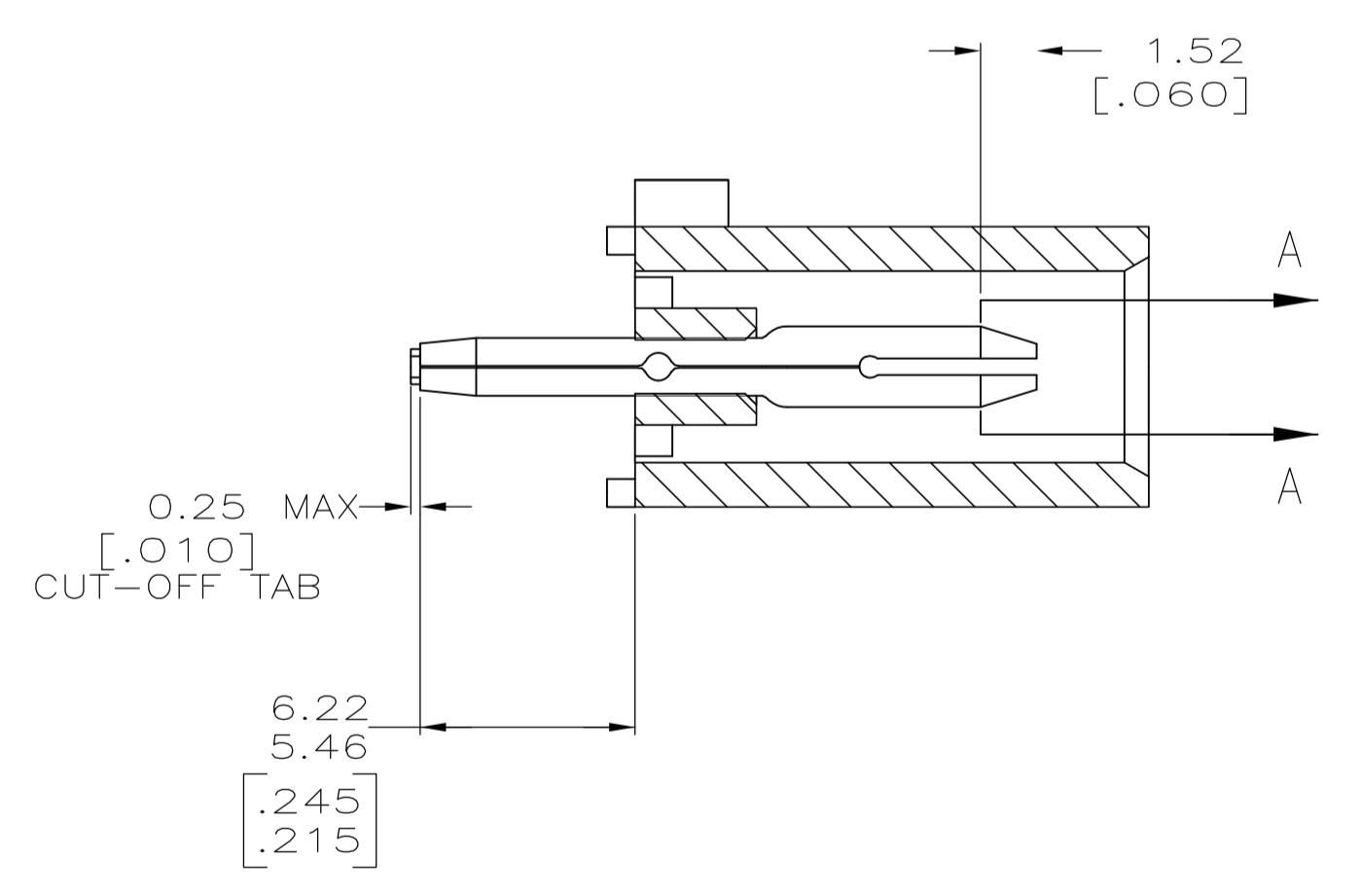
| LOC |     | DIST                  |          | REVISIONS |      |  |  |
|-----|-----|-----------------------|----------|-----------|------|--|--|
| P   | LTR | DESCRIPTION           | DATE     | DMN       | APVD |  |  |
| B   |     | REV PER ECR 10-018921 | 14SEPT10 | JR        | TM   |  |  |



- PARTS COMPLY WITH AMP SOLDERABILITY SPECIFICATION 109-11-3.
- DIMENSIONS IN BRACKETS ARE IN INCHES.
- CIRCUIT IDENTIFICATION CHARACTERS ARE ADJACENT TO THE INDICATED CAVITIES, BUT LOCATION AND ORIENTATION MAY DIFFER FROM PRINT.
- FLAMMABILITY V2 FOR THICKNESS 0.38mm, 1.5mm, and 3.0mm PER IEC 60695-11-10.
- GLOW-WIRE FLAMMABILITY (GWFI) 800°C FOR THICKNESS 0.38mm AND 0.75mm PER IEC 60695-2-12.
- GLOW-WIRE FLAMMABILITY (GWFI) 960°C FOR THICKNESS 1.5mm AND 3.0mm PER IEC 60695-2-12.
- GLOW-WIRE IGNITION (GWIT) 825°C FOR THICKNESS 0.38mm, 0.75mm, 1.5mm AND 3.0mm PER IEC 60695-2-13.

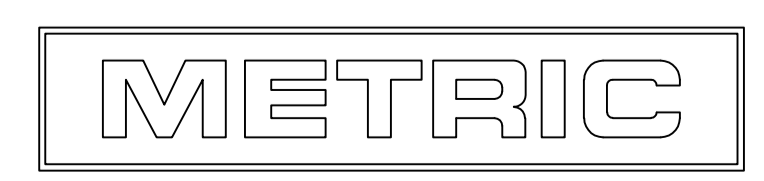


RECOMMENDED MOUNTING HOLE PATTERN FOR 3.18 [.125] THICK P.C. BOARD



3-DIMENSIONAL MODEL NTS

|                                 |                       |             |
|---------------------------------|-----------------------|-------------|
| PHOSPHOR BRONZE, PRE-TIN        | NYLON,UL94V-2,NATURAL | 1586961-1   |
| PIN CONTACT MATERIAL AND FINISH | HOUSING MATERIAL      | PART NUMBER |



|  |  |                           |  |
|--|--|---------------------------|--|
| THIS DRAWING IS A CONTROLLED DOCUMENT. |  | DIN K. WHITAKER 26JUL2007 | Tyco Electronics Corporation<br>Greensboro, NC 27409           |
| DIMENSIONS: mm [INCHES]                |  | CHK D. COLEY 26JUL2007    |  |
| TOLERANCES UNLESS OTHERWISE SPECIFIED: |  | APVD D. COLEY 26JUL2007   | NAME: PIN HEADER ASSEMBLY, 3 CIRCUIT, UNIVERSAL MATE-N-LOK(TM) |
| 0 PLC ± -                              |  | PRODUCT SPEC              |  |
| 1 PLC ± -                              |  | APPLICATION SPEC          | SIZE: A1   |
| 2 PLC ± 0.13 [.005]                    |  | WEIGHT: -                 | CAGE CODE: 1586961   |
| 3 PLC ± -                              |  | FINISH: SEE TABLE         | DRAWING NO: 100779   |
| 4 PLC ± -                              |  | CUSTOMER DRAWING          | SCALE: 5:1   |
| ANGLES ± -                             |  |                           | SHEET 1 OF 1   |
| MATERIAL: SEE TABLE                    |  |                           | REV B  |