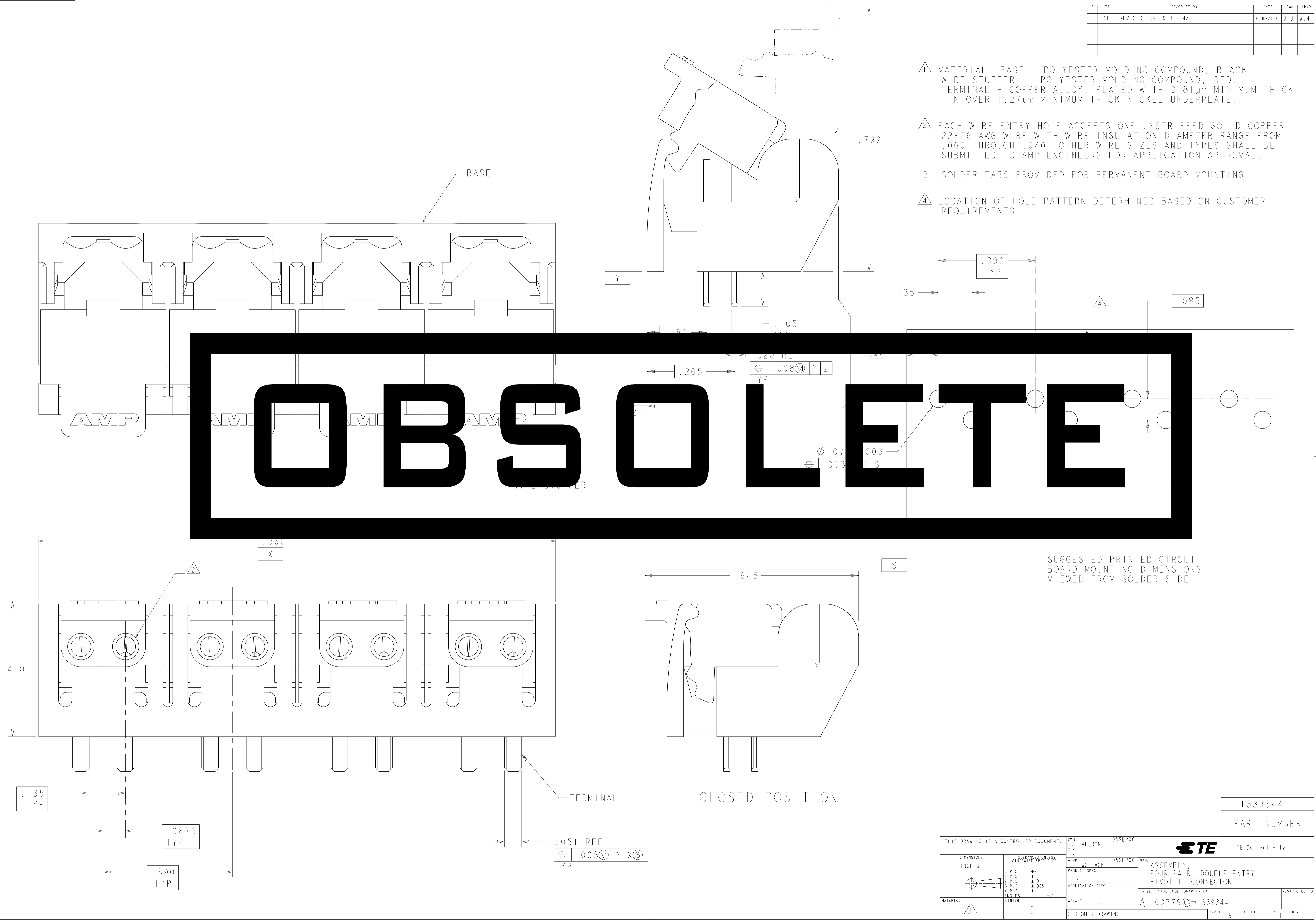


REVISIONS				
P	LTN	DESCRIPTION	DATE	APVD
D1		REVISED ECR-19-019743	02 JUN 2020	J. J. W. H.

- ⚠ MATERIAL: BASE - POLYESTER MOLDING COMPOUND, BLACK.
WIRE STUFFER: - POLYESTER MOLDING COMPOUND, RED.
TERMINAL - COPPER ALLOY, PLATED WITH 3.81μm MINIMUM THICK TIN OVER 1.27μm MINIMUM THICK NICKEL UNDERPLATE.
- ⚠ EACH WIRE ENTRY HOLE ACCEPTS ONE UNSTRIPPED SOLID COPPER 22-26 AWG WIRE WITH WIRE INSULATION DIAMETER RANGE FROM .060 THROUGH .040. OTHER WIRE SIZES AND TYPES SHALL BE SUBMITTED TO AMP ENGINEERS FOR APPLICATION APPROVAL.
- 3. SOLDER TABS PROVIDED FOR PERMANENT BOARD MOUNTING.
- ⚠ LOCATION OF HOLE PATTERN DETERMINED BASED ON CUSTOMER REQUIREMENTS.

OBSOLETE



1339344-1
PART NUMBER

THIS DRAWING IS A CONTROLLED DOCUMENT.		DWN: J. AHERON	OSSEPOO	
DIMENSIONS: INCHES		CHK: T. WOJCIACKI	OSSEPOO	
TOLERANCES UNLESS OTHERWISE SPECIFIED: 0 PLC ±. 1 PLC ±.01 2 PLC ±.01 3 PLC ±.005 4 PLC ±. ANGLES ±2° FINISH		NAME: ASSEMBLY, FOUR PAIR, DOUBLE ENTRY, PIVOT II CONNECTOR SIZE: A 00779 C=1339344 WEIGHT: - CUSTOMER DRAWING		RESTRICTED TO: - SCALE: 6:1 SHEET: 1 OF 1 REV: D1