

- 1
- 2
- 3
- 4
- 5
- 6
- 7
- 8
- 9
- 10
- 11
- 12
- 13
- 14
- 15
- 16
- 17
- 18

MATERIAL

High-resilience polyamide based (PA) technopolymer, white similar to RAL 9002 (CLEAN), glossy finish.

STANDARD EXECUTION

AISI 303 stainless steel bosses, threaded holes.

FEATURES

This handle is particularly suitable to be produced in light colours: the glossy finish guarantees perfect cleaning. In particular, M. 843 CLEAN handle, thanks to its white colour and glossy finish, is suitable for applications on medical and hospital equipment and on food processing machines whose parts, for hygienic reasons, must be frequently cleaned. Its solid shape without cavities prevents unhealthy residues from depositing.

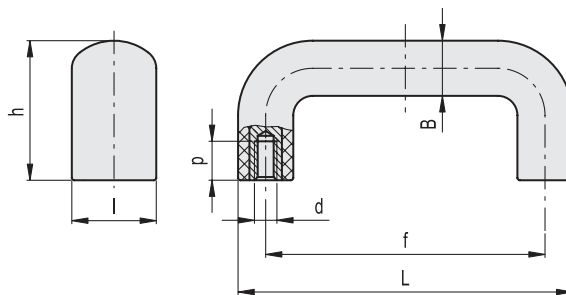
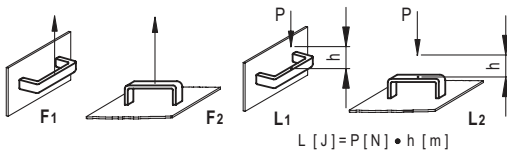
TECHNICAL DATA

Tensile stress and impact strength: the values F1, F2, L1 and L2 indicated in the table were obtained during breaking tests carried out with the appropriate dynamometric equipment under the test conditions shown in the figure with ambient temperature.

The tests have revealed that the special technopolymer used can absorb very strong shocks, with no damages, thanks to its high-resilience.



ELESA Original design



Conversion Table	
1 mm = 0.039 inch	
mm	inch
103	4.05
138	5.43
200	7.87
322	12.68

Code	Description	L	f	d6H	h	B	l	p	F1 [N]	F2 [N]	L1 [J]	L2 [J]	⚖️
151406	M.843/100-SST-M6 CLEAN	103	86±0.5	M6	46.5	17	26	12	4000	7000	50	120	52
151412	M.843/140-SST-M8 CLEAN	138	117±0.5	M8	54	20	30	13	4500	5000	50	120	80
151416	M.843/200-SST-M8 CLEAN	200	179±1	M8	62	20	30	13	2000	2400	27	80	105
151419	M.843/320-SST-M8 CLEAN	322	300±1	M8	64	22	32	13	2000	3000	25	75	157