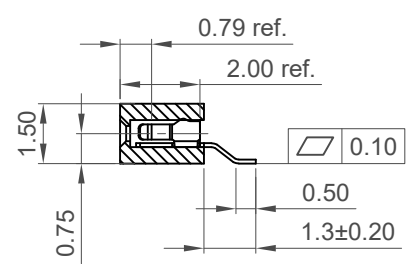
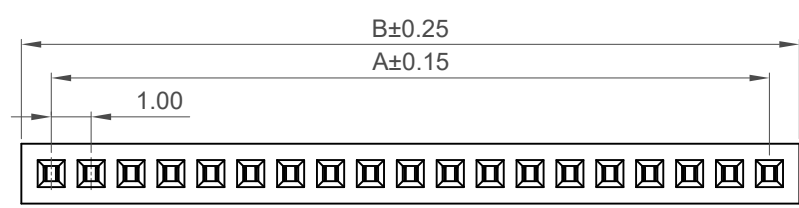
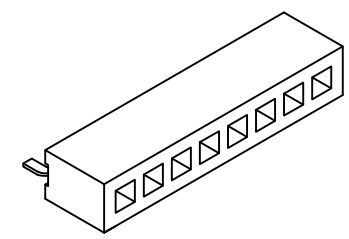
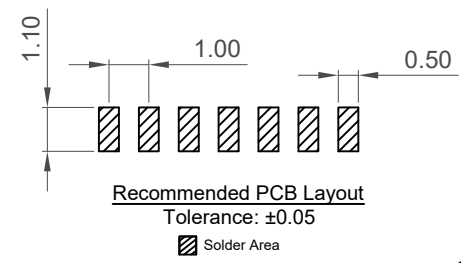
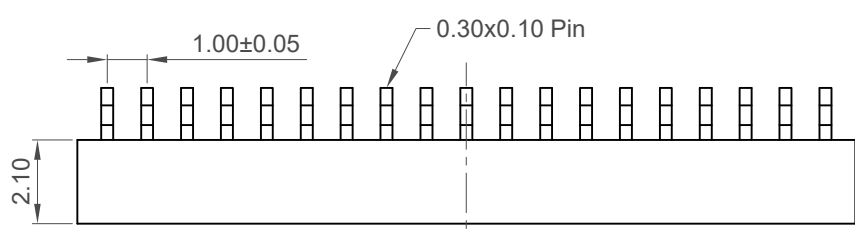


H
G
F
E
D
C
B
A



No. of Contacts	Dimensions	
	A	B
2	1.00	2.50
3	2.00	3.50
4	3.00	4.50
5	4.00	5.50
6	5.00	6.50
7	6.00	7.50
8	7.00	8.50
9	8.00	9.50
10	9.00	10.50
11	10.00	11.50
12	11.00	12.50
13	12.00	13.50
14	13.00	14.50
15	14.00	15.50
16	15.00	16.50
17	16.00	17.50
18	17.00	18.50
19	18.00	19.50
20	19.00	20.50
21	20.00	21.50
22	21.00	22.50
23	22.00	23.50
24	23.00	24.50
25	24.00	25.50
26	25.00	26.50
27	26.00	27.50
28	27.00	28.50
29	28.00	29.50
30	29.00	30.50
31	30.00	31.50
32	31.00	32.50
33	32.00	33.50
34	33.00	34.50
35	34.00	35.50
36	35.00	36.50
37	36.00	37.50
38	37.00	38.50
39	38.00	39.50
40	39.00	40.50

Specifications

Material

Contact: Phosphor Bronze
Insulator: Polymer, LCP, UL 94-V0

Plating

Contact: See Ordering Grid

Electrical

Current Rating: 1 Amp Per Pin
Insulation Resistance: 1000 MΩ min
Contact Resistance: 40 mΩ max.
Dielectric Withstand Voltage: AC 300 V

Mechanical & Environmental

Operating Temperature: -40°C to +105°C

Soldering Process:

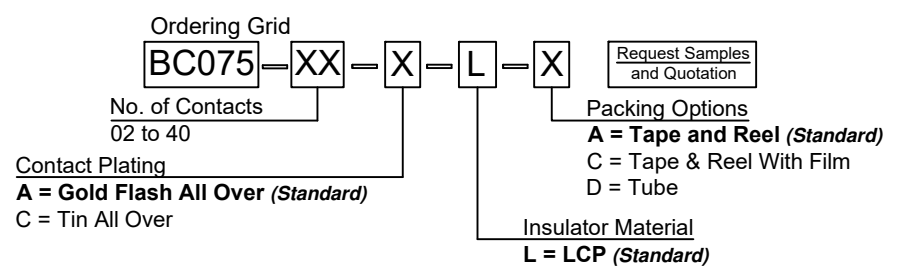
IR Reflow: 260°C for 10 sec.
Manual Solder: 350°C for 3-5 sec

Mates with (Subject to pin length)

BC020 BC025 BC030 BC032 BC090

Perfect Planar Mating with

BC034 (Only Insulator Height V=1.50mm)



Part Number BC075		Product Description 1.00mm Pitch Socket, Single Row, Surface Mount, Horizontal	
Drawing Date 20th May 2008			
By	CC	Tolerances (Except as Noted)	Units:
Detail	BC075 C PCN	Length X. ± 0.30 X.X ± 0.25 X.XX ± 0.15 X.XXX ± 0.10	Metric (mm)
Revision	C3	Angle X.° ± 5° X.X° ± 3° X.XX° ± 2° X.XXX° ± 1°	3rd Angle Projection
Date	08/01/23		

RoHS COMPLIANT 2011/65/UE

This drawing is confidential and copyright of Global Connector Technology, Ltd (GCT). This drawing must not be copied or disclosed without written consent. E & OE

www.gct.co

Not to Scale	Drawn By ASE	Sheet No. 1/1
--------------	--------------	---------------