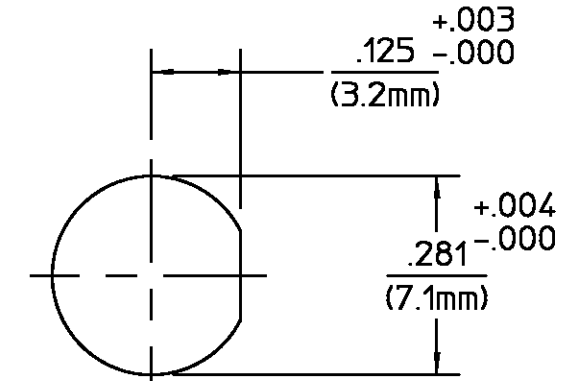
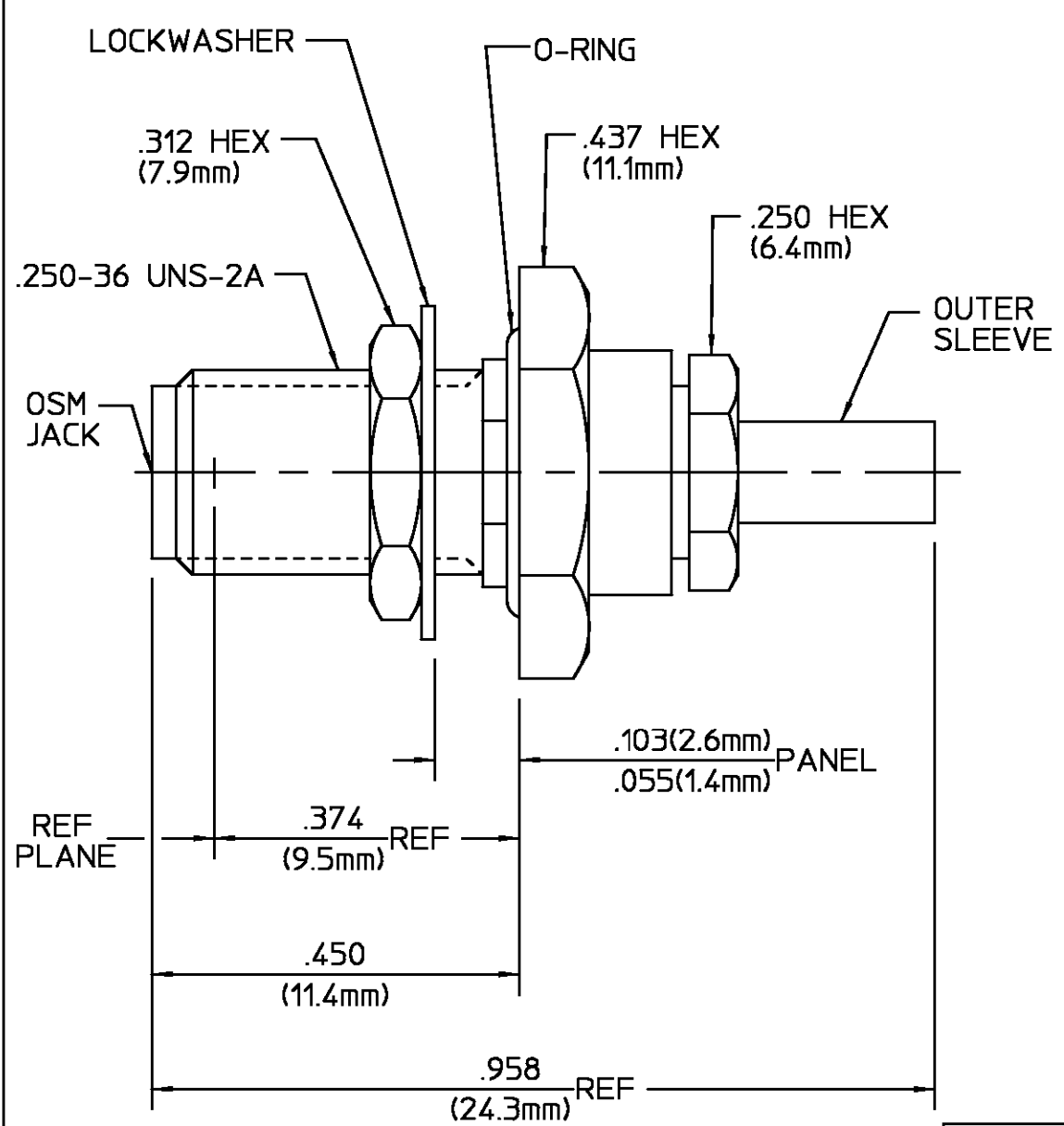


REVISIONS			
REV	DESCRIPTION	DATE	APPROVED
01	RELEASED	NC 7/21/95	<i>PCW</i> 7/28/95



RECOMMENDED MOUNTING HOLE

COMPONENT	MATERIAL	FINISH
HOUSING CLAMP NUT MOUNTING NUT LOCKWASHER	STAINLESS STEEL PER ASTM-A484 AND ASTM- A582, TYPE 303	PASSIVATE PER ASTM A380
SLEEVE	STAINLESS STEEL PER ASTM-A484 AND ASTM- A582, TYPE 303	GOLD PLATE PER MIL-G-45204
DIELECTRIC	TFE FLUOROCARBON PER MIL-P-19468 AND FED SPEC L-P-403	N/A
DIELECTRIC	NYLON	N/A
CENTER CONTACT	BERYLLIUM COPPER PER QQ-C-530, ALLOY 173	GOLD PLATE PER MIL-G-45204
FERRULE	SOFT COPPER ALLOY	GOLD PLATE PER MIL-G-45204
O-RING	SILICONE RUBBER PER ZZ-R-765	N/A

CABLE ENTRY DIAMETER MINIMUM	
FERRULE	.099
SLEEVE	.036
DIELECTRIC	.021
CONTACT	.021

UNLESS OTHERWISE SPECIFIED
DIMENSIONS ARE IN INCHES
TOLERANCE ON
FRAC. DEC. ANGLES
± 1/64 ± .005 ± °

These drawings and specifications are the property of
M/A COM Incorporated and shall
not be reproduced or copied or
used in whole or in part as the
basis for the manufacture or
sale of item(s) without written
permission.

DRAWN BY
N. CARTER DATE
07/21/95

CHECKED BY

APP'D BY
PCW DATE
7/28/95

USE ASS'Y PROCEDURE

408-04924
NO. AP. (20-538)

AMP Incorporated
140 Fourth Avenue
Waltham, MA 02451-7599

TITLE
SMA BULKHEAD FEEDTHRU CABLE JACK
CRIMP ATTACH. M39012/59-3025 CAT.C

SIZE B	CODE IDENT NO. 26805	2034-8025-92	REV 01
-----------	-------------------------	--------------	-----------

SCALE 5:1 SHEET 1 OF 1

- NOTES:
- DESIGNED FOR USE WITH
RG-178/U CABLE
 - CAPTURED CENTER CONTACT