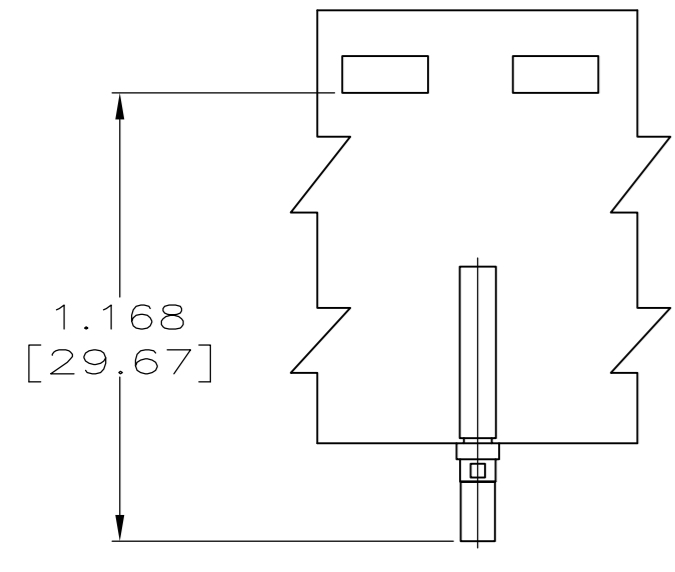
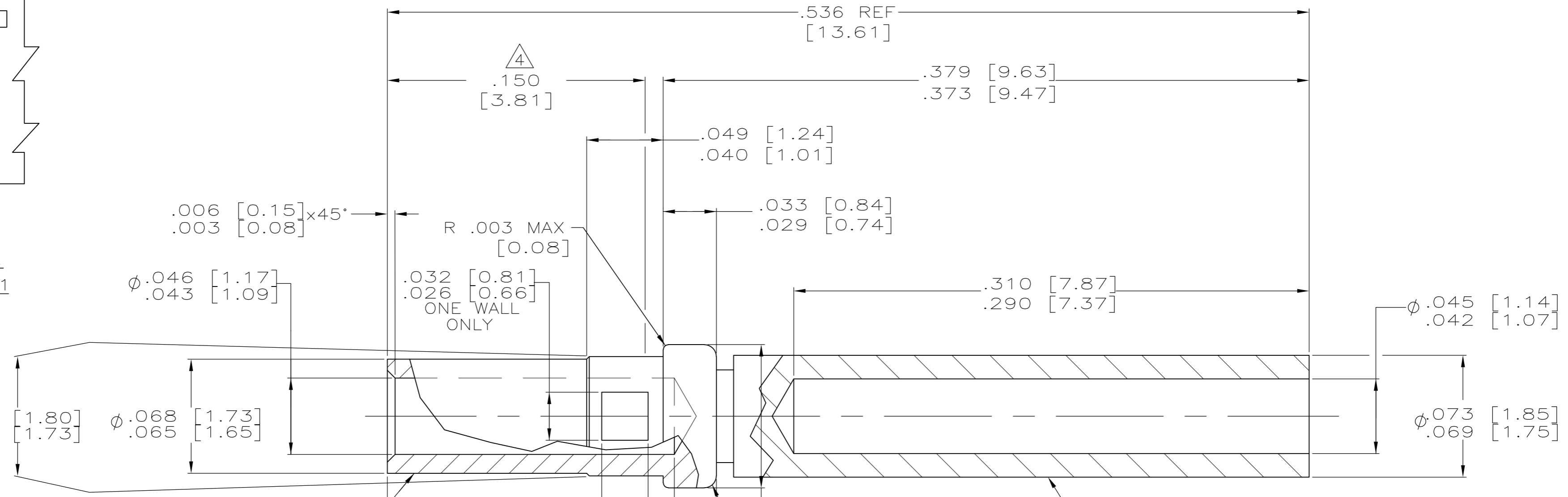


| REVISIONS | | | | |
|-----------|-----|-----------------------|---------|-------|
| P | LTR | DESCRIPTION | DATE | APVD |
| U | | REV PER ECO 16-017871 | 24MAY16 | CT DM |

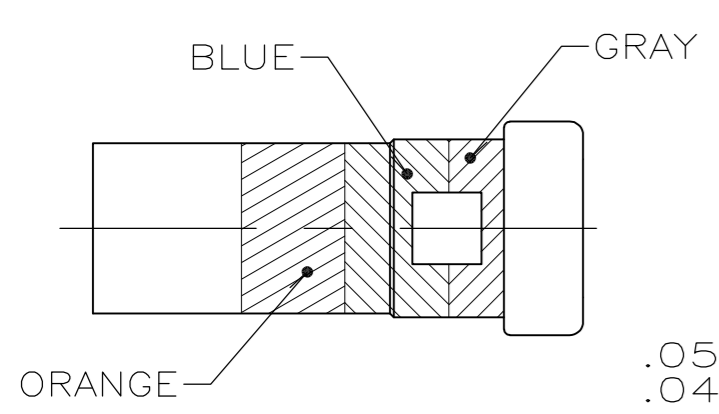


205090-2
SCALE 2:1

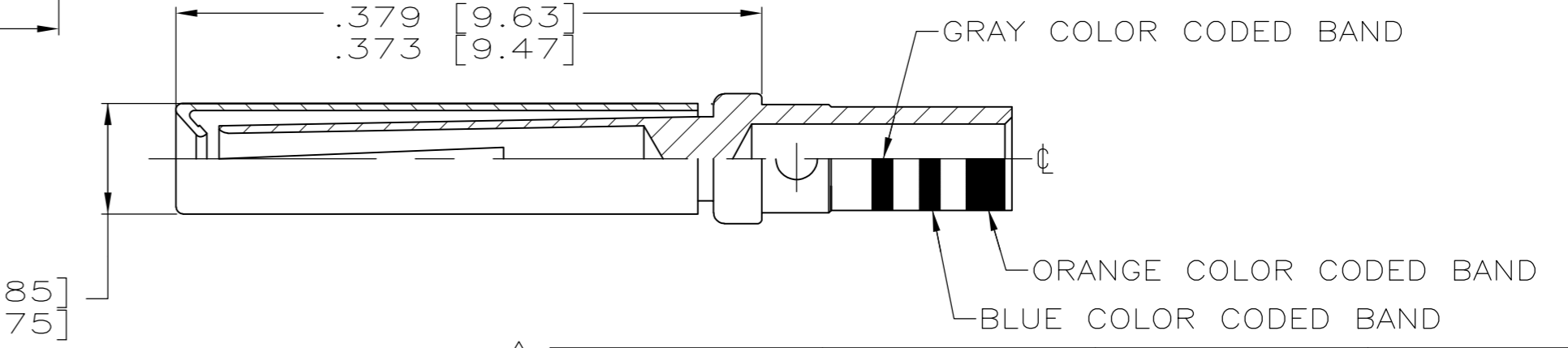
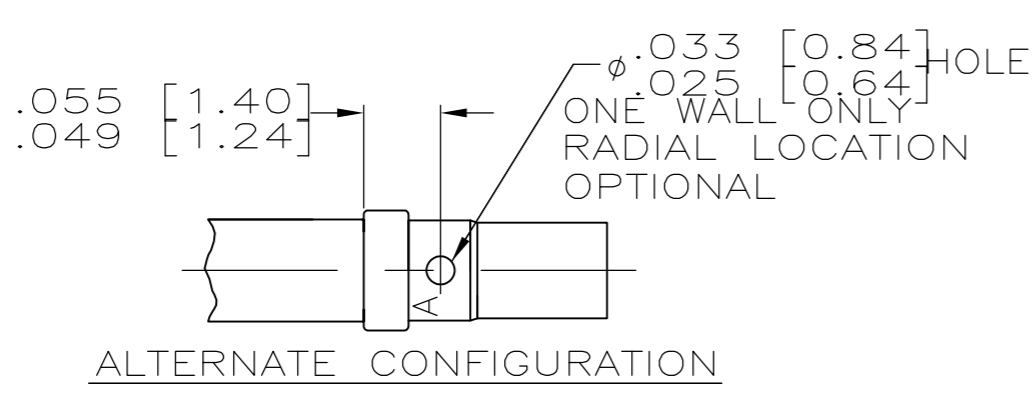


BODY
MAT'L: LEADED NICKEL COPPER
FINISH: SEE TABLE

HOOD
MAT'L: STAINLESS STEEL PER ASTM-A-240
FINISH: PASSIVATED PER AMS-2700B



COLOR CODE
BIN NO. 368
SCALE 10:1



- ALL DIMENSIONS APPLY AFTER PLATING.
- CONTACT QUALIFIED TO SAE-AS39029/63-368.
- ALL DIAMETERS CONCENTRIC WITH EACH OTHER WITHIN .004 T.I.R.
- \triangle 4 POINT OF PLATING MEASUREMENT .150 [3.81] FROM WIRE BARREL END OF CONTACT.
- ALL SURFACES HAVE $\sqrt{63}$ OR BETTER FINISH.
- \triangle 6 GOLD PLATED .000050 MIN THK PER ASTM-B-488 TYPE II, GRADE C, CLASS 1.25 OVER NICKEL .000050 MIN THK PER AMS-QQ-N-290 IN MATING AREAS. GOLD FLASH PER ASTM-B-488 OVER .000050 MIN THK NICKEL PER AMS-QQ-N-290 IN NON MATING AREAS.
- \triangle 7 GOLD PLATED PER ASTM B 488 TYPE 3, GRADE C, CLASS .75 OVER NICKEL PER QQ-N-290.
- SLEEVE MAY BE CRIMPED, DIMPLED OR PRESS FIT TO BODY
- MANUFACTURER'S LOGO ("A" OR "- . .") LOCATION OPTIONAL.
- \triangle 10 RESTRICTED PART NUMBER
- \triangle 11 COUNTRY OF ORIGIN RESTRICTED TO UNITED STATES.

SUPERSEDED BY 1218267-3

| \triangle 11 | YES | \triangle 6 | LOOSE PIECE | 4-205090-1 |
|----------------|--------|---------------|--------------|------------|
| \triangle 10 | NO | \triangle 6 | LOOSE PIECE | 2-205090-2 |
| \triangle 10 | | | | 2-205090-1 |
| | NO | \triangle 7 | LOOSE PIECE | 205090-7 |
| | YES | \triangle 6 | TAPE MOUNTED | 205090-2 |
| | YES | \triangle 6 | LOOSE PIECE | 205090-1 |
| COLOR CODE | FINISH | DESCRIPTION | PART NUMBER | |

| | | | | | | | | | | | | | | | | | | | | | | |
|--|---|------------------------|---|---------------------|-------|---|---|-------|---|---|-------|---|-------------|-------|---|---|--------|---|---|--------------|---------------|--|
| THIS DRAWING IS A CONTROLLED DOCUMENT. | | DWN C.C.THOMAS 8-17-04 | TE Connectivity | | | | | | | | | | | | | | | | | | | |
| DIMENSIONS: INCHES [mm] | | CHK D.MILLER 8-17-04 | | | | | | | | | | | | | | | | | | | | |
| TOLERANCES UNLESS OTHERWISE SPECIFIED: | | APVD D.MILLER 8-17-04 | NAME CONTACT ASSY, SOCKET, SIZE 20, AMPLIMITE | | | | | | | | | | | | | | | | | | | |
| <table border="1"> <tr><td>0 PLC</td><td>±</td><td>-</td></tr> <tr><td>1 PLC</td><td>±</td><td>-</td></tr> <tr><td>2 PLC</td><td>±</td><td>-</td></tr> <tr><td>3 PLC</td><td>±</td><td>.005 [0.13]</td></tr> <tr><td>4 PLC</td><td>±</td><td>-</td></tr> <tr><td>ANGLES</td><td>±</td><td>-</td></tr> </table> | | 0 PLC | ± | - | 1 PLC | ± | - | 2 PLC | ± | - | 3 PLC | ± | .005 [0.13] | 4 PLC | ± | - | ANGLES | ± | - | PRODUCT SPEC | RESTRICTED TO | |
| 0 PLC | ± | - | | | | | | | | | | | | | | | | | | | | |
| 1 PLC | ± | - | | | | | | | | | | | | | | | | | | | | |
| 2 PLC | ± | - | | | | | | | | | | | | | | | | | | | | |
| 3 PLC | ± | .005 [0.13] | | | | | | | | | | | | | | | | | | | | |
| 4 PLC | ± | - | | | | | | | | | | | | | | | | | | | | |
| ANGLES | ± | - | | | | | | | | | | | | | | | | | | | | |
| MATERIAL SEE CALLOUTS | | FINISH SEE CALLOUTS | WEIGHT 0.000000 | SIZE A2 | | | | | | | | | | | | | | | | | | |
| | | CUSTOMER DRAWING | CAGE CODE 00779 | DRAWING NO C=205090 | | | | | | | | | | | | | | | | | | |
| | | | SCALE 20:1 | SHEET 1 of 1 | | | | | | | | | | | | | | | | | | |
| | | | REV U | | | | | | | | | | | | | | | | | | | |