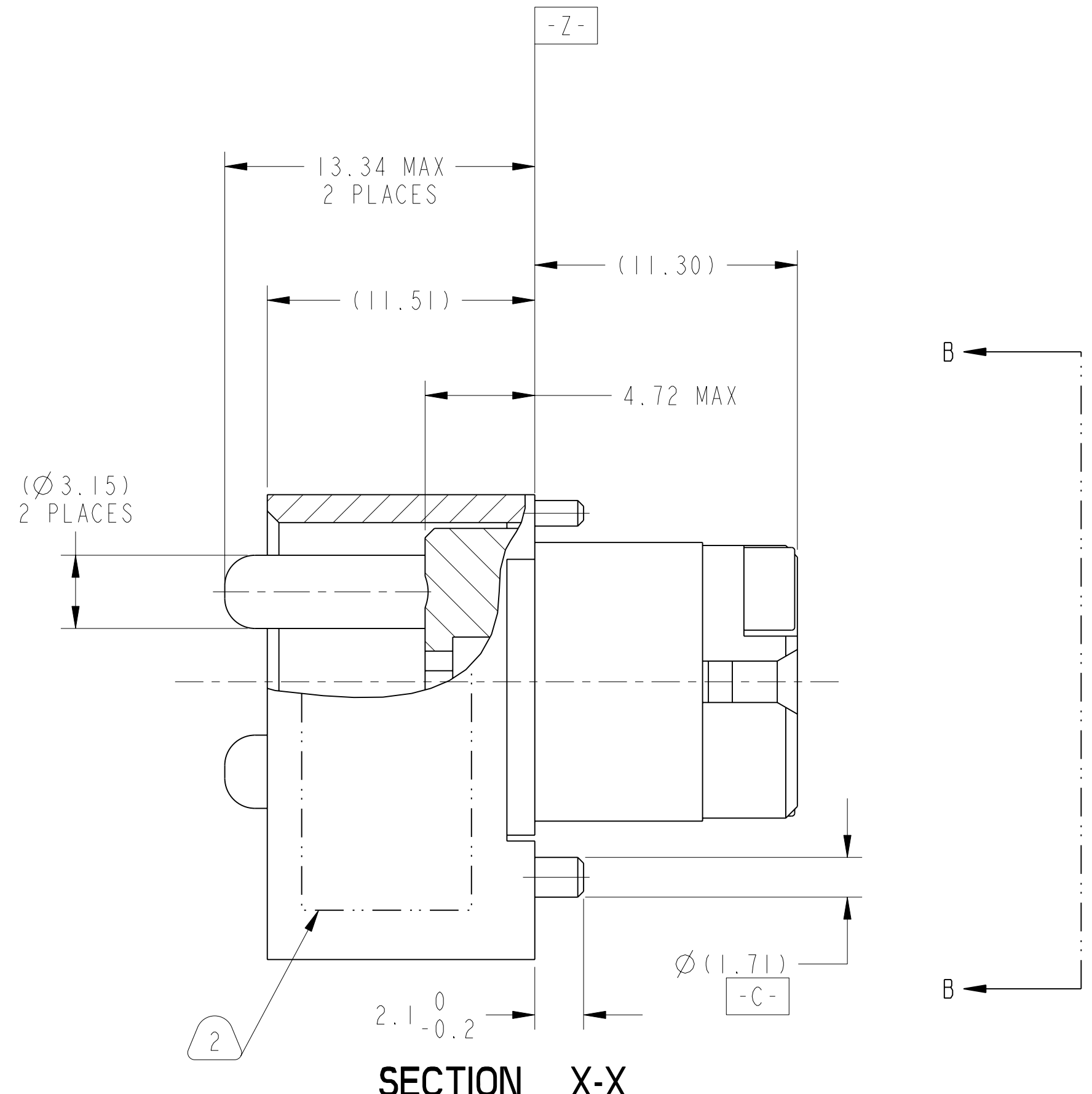
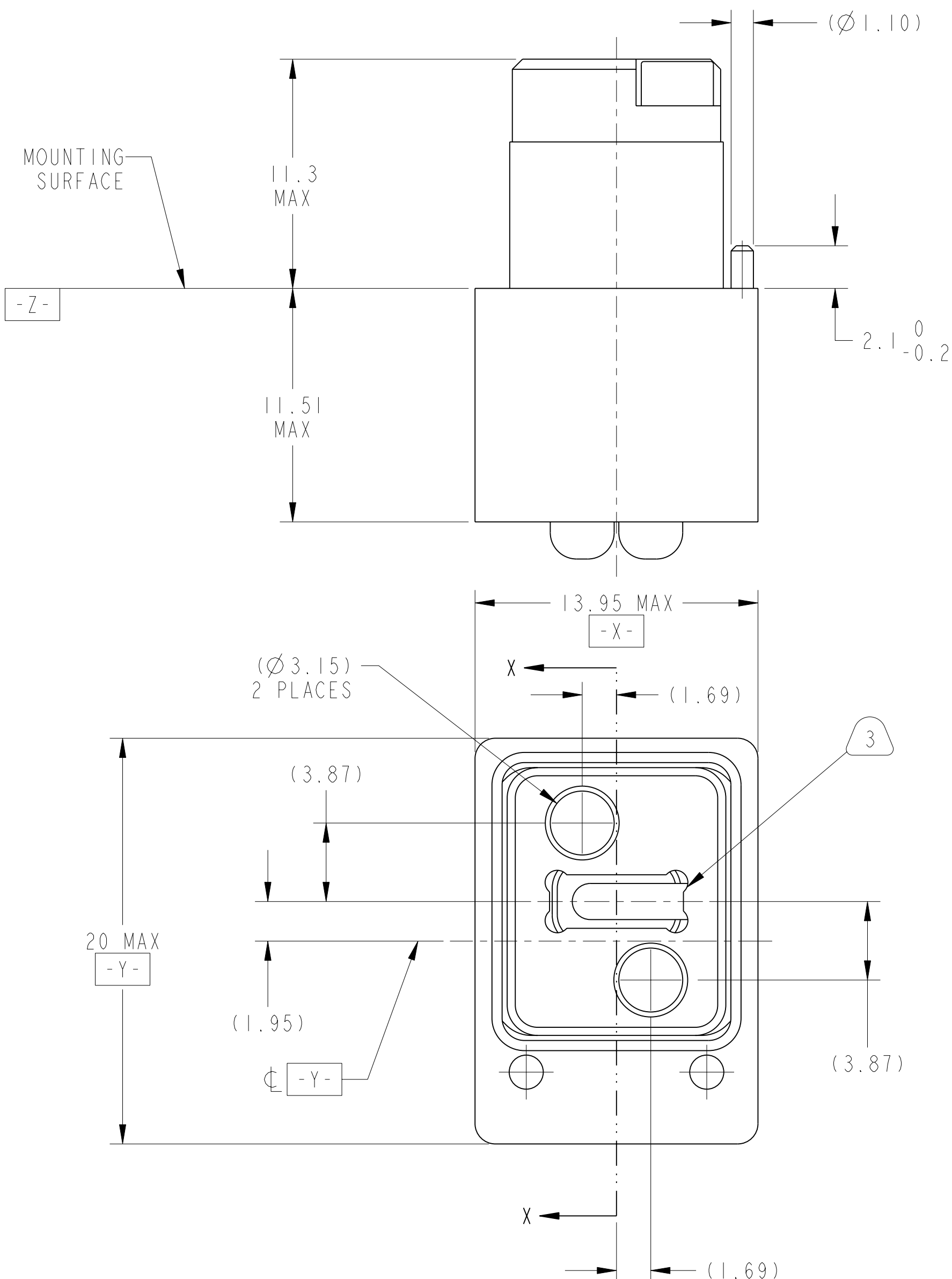


REV. PA1	SHEET 1 OF 3	DOCUMENT NO. 10-504639-010
REVISIONS		
LTR	DESCRIPTION	DATE
PA1	INITIAL RELEASE	4/3/18



SECTION X-X

METRIC DRAWING

SEE SHEET 3

NOTES:
 THE USE OF THIS DOCUMENT IS UNLIMITED. HOWEVER, DOCUMENTS REFERENCED HEREON MAY CONTAIN LIMITED RIGHTS DATA.

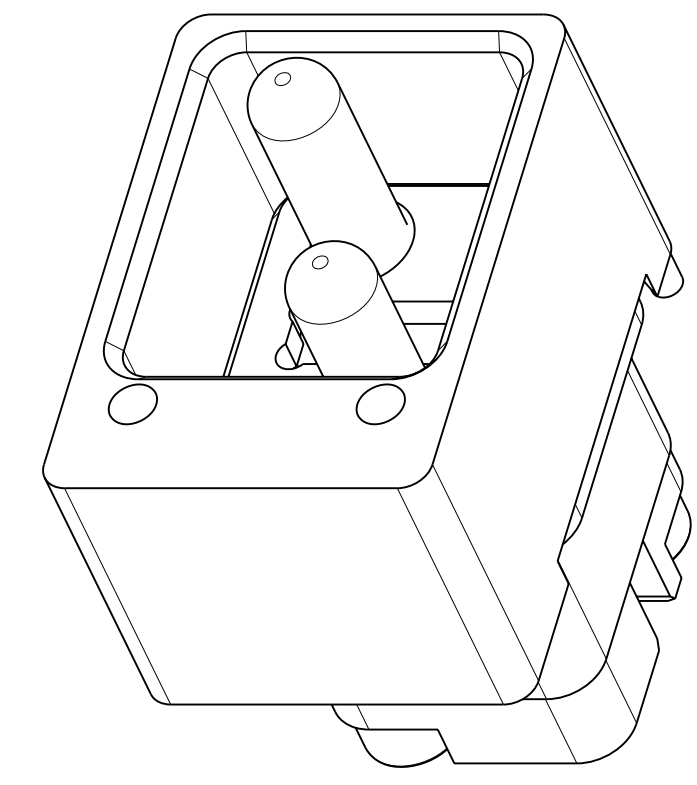
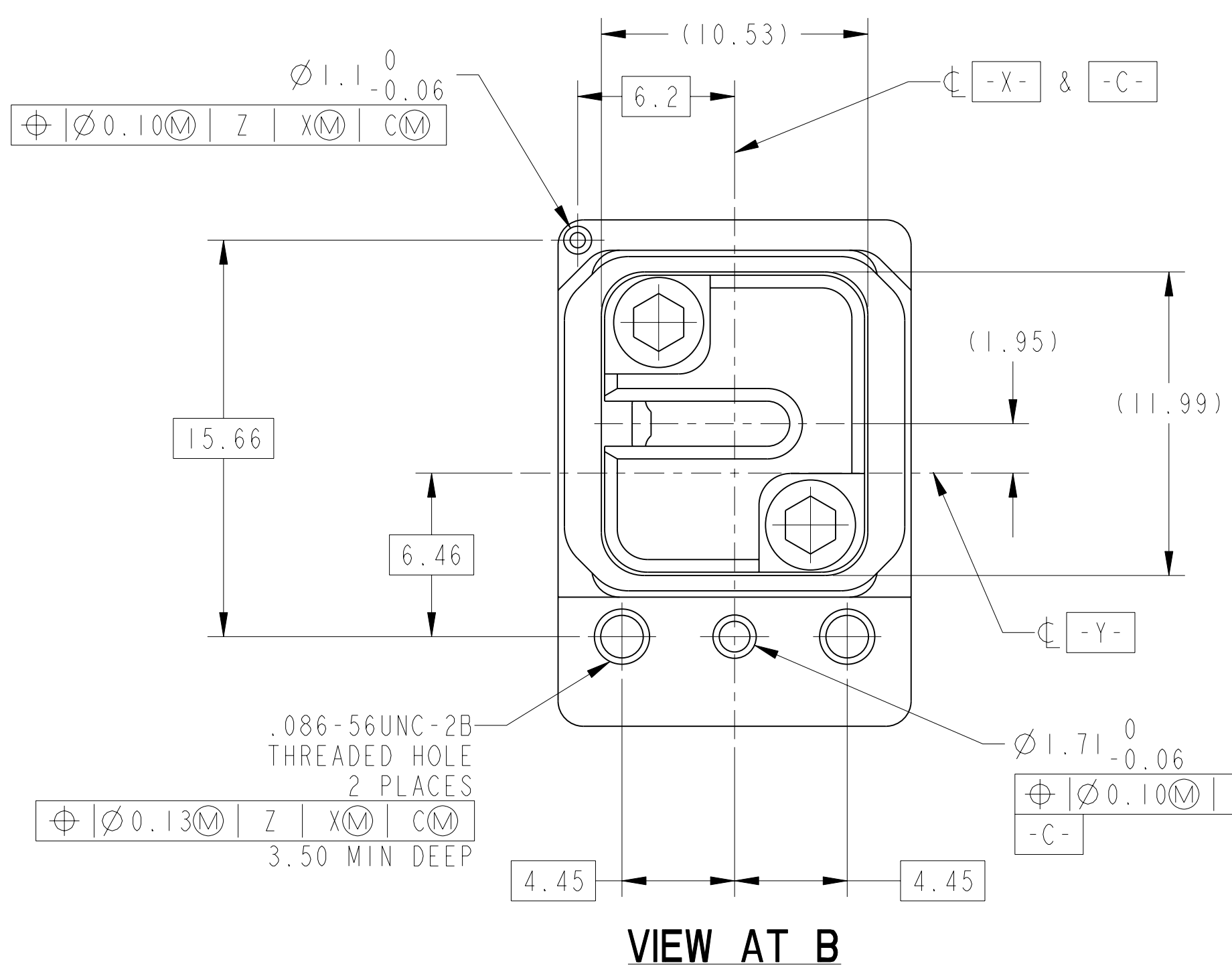
SCALE 5.000

NONE	PRO/ENGINEER INFORMATION
NEXT ASSEMBLY	Pro/e Model Used: 10-504639-010.DWG.ASSEM Drawing Name: 10-504639-010

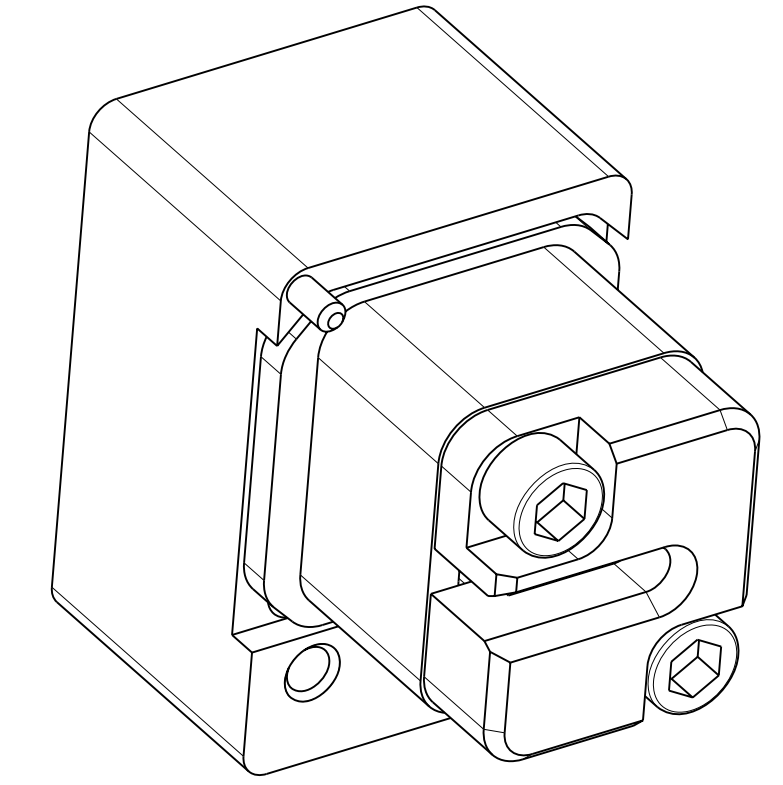
UNLESS OTHERWISE SPECIFIED		SPECIFICATIONS		POS	QTY	PART NUMBER	DESCRIPTION	NOTE
LINEAR DIMENSIONS ARE IN MILLIMETERS TOLERANCES: .XXXX = NA ANGLES = ±2° .XXX = ±NA .XX = ±.13 .X = ±.25		MATERIAL SPEC. NONE		APPROVALS		DATE	AMPHENOL CORPORATION <small>40-60 DELAWARE AVENUE SIDNEY, N.Y. 13839</small> CONNECTOR, FIBER OPTIC, BACKPLANE, 1 MT SPECIAL, SPRING LOADED (VITA 66.4 ENVELOPE)	U
DIM. & TOL. PER ASME Y14.5M; DRM PER MIL-DTL-31000; OTHER Amphenol Sids. PER 9-3800		PROCESS SPEC. 9-3856-5 9-3895		PREPARED BY R. CHAPMAN		03-Apr-18		
LEGENDS: = FLAG NOTE CALL OUT REFERENCE ONLY				ENGINEER IN CHARGE E. HICKEY				
				DESIGN MANAGER R. SELFRIDGE				
				DESIGN ACTIVITY GROUP BLP				
				THIRD ANGLE PROJECTION				
				SIZE	CAGE CODE	DOCUMENT NO.	REV.	
				C	77820	10-504639-010	PA1	
				SCALE: 3.0 REF: 10-504639-006		SHEET 1 OF 3		

DOCUMENT NO. 10-504639-010
 SHEET 1 OF 3
 REV. PA1
 C
 B
 A

DOCUMENT NO. 10-504639-010
 SHEET 1 OF 3
 REV. PA1
 C
 B
 A



TOP ISO VIEW
SCALE 4.000



BOTTOM ISO VIEW
SCALE 4.000

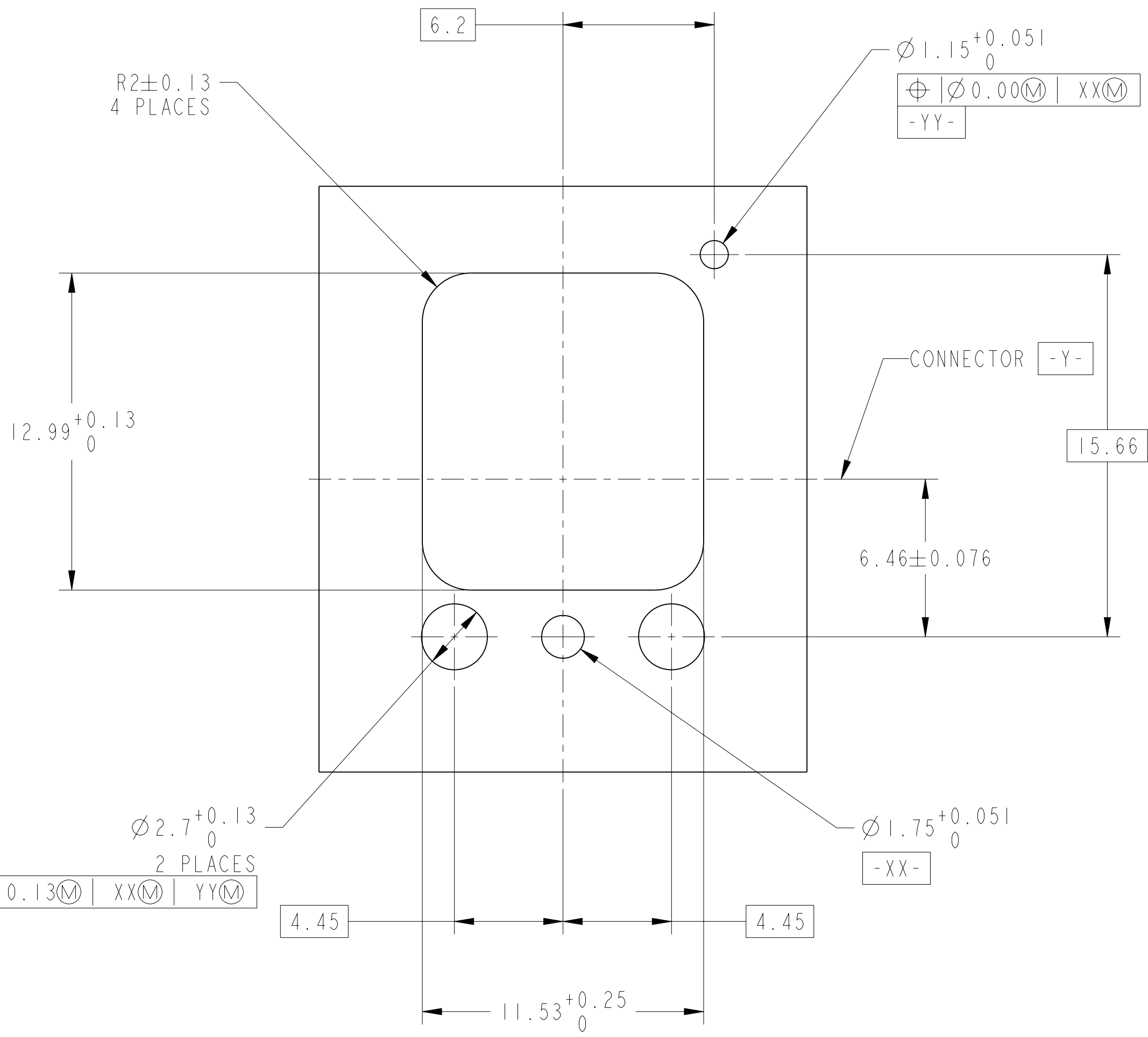
7. FOR CONNECTOR INSTALLATION ILLUSTRATION SEE SHEET 3.
6. FOR MATING MODULE CONNECTOR ASSEMBLY, SEE DRAWING 10-504637-012.
5. TIGHTEN CAPTIVE SCREWS TO 10-14 IN-OZ AFTER INSTALLING MT FERRULE (NOT INCLUDED).
4. FIBER OPTIC INSERT IS DESIGNED FOR MT TYPE FERRULES TERMINATED TO NON-STRENGTH MEMBERED RIBBON CABLE. MT FERRULE, PIN CLAMP ASSEMBLIES AND ASSOCIATED RIBBON CABLE ARE NOT PART OF THIS ASSEMBLY.
3. INDICATED CAVITY WILL ACCOMODATE A STANDARD 12 CHANNEL MT FERRULE PER IEC 61754-5 (SEE NOTE 4).
2. BLACK INK STAMP "AMPH 77820" PART NUMBER AND DATE CODE ON INDICATED SURFACE PER 9-3856-5. DATE CODE PER 9-3895. CHARACTERS TO BE 1.6±.51 (.062±.020) HIGH. ADDITIONAL INFORMATION MAY BE REQUESTED BY PURCHASE ORDER.
1. PARTS ARE SHIPPED UNASSEMBLED.

MATERIALS AND FINISHES

COMPONENT	MATERIAL/ FINISH
BACKPLANE SHELL	BODY - MATERIAL - ALUM. ALLOY PER AMS 4150 FINISH - CHROMATE TREATMENT PER MIL-C-5541, CL 3 HELICAL INSERTS - STAINLESS STEEL 304 SERIES PASSIVATED
INSERT ASSEMBLY	FRONT INSERT/RETAINER - MATERIAL - ALUM ALLOY PER AMS 4150 FINISH - CHROMATE TREATMENT PER MIL-C-5541, CL3 SCREW - STAINLESS STEEL 300 SERIES, PASSIVATED HELICAL INSERTS - STAINLESS STEEL 304 SERIES, PASSIVATED GUIDE PIN - STAINLESS STEEL PER AMS 5640. PASSIVATED

THE USE OF THIS DOCUMENT IS UNLIMITED. HOWEVER, DOCUMENTS REFERENCED HEREON MAY CONTAIN LIMITED RIGHTS DATA.

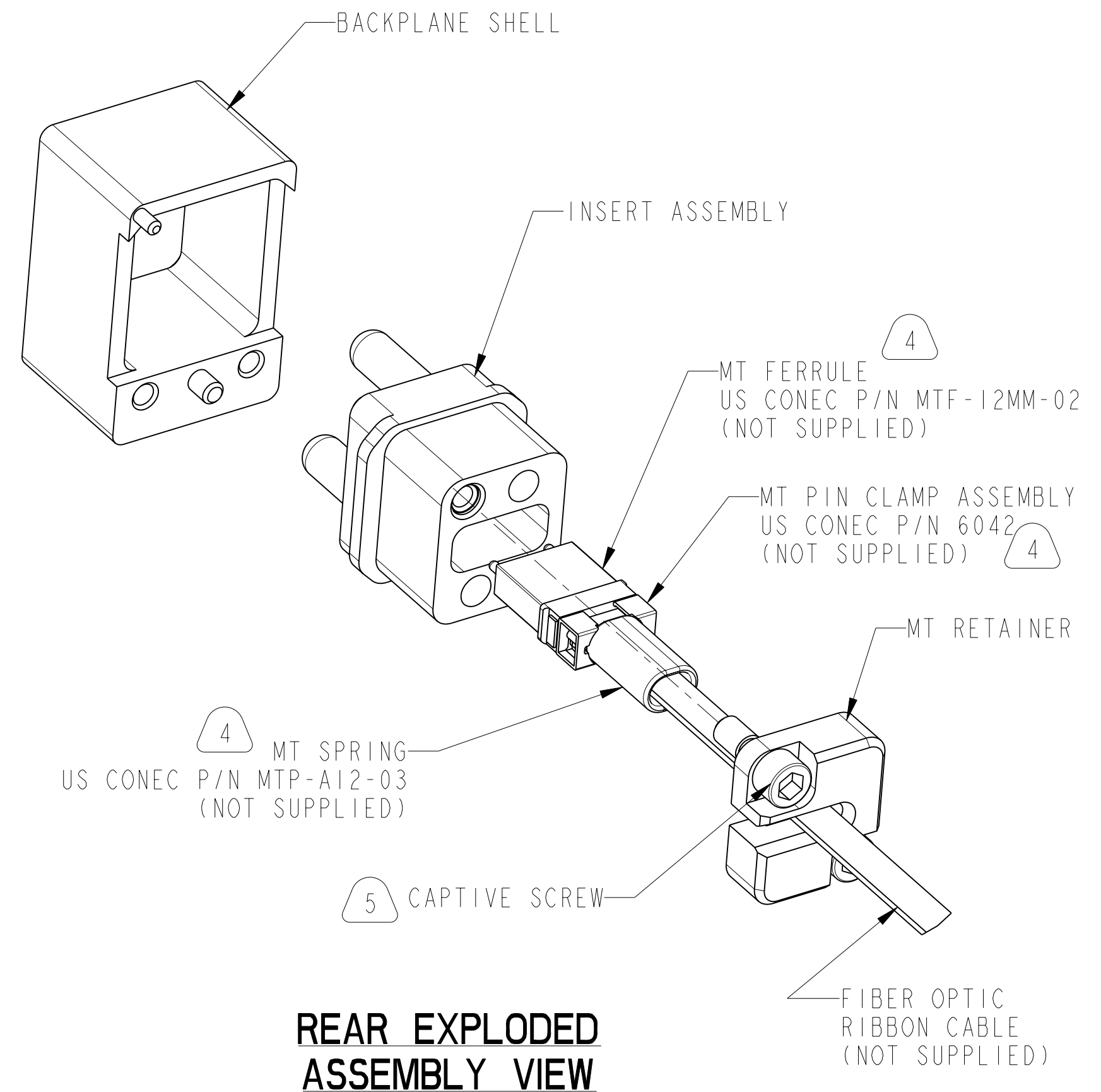
SIZE C	CAGE CODE 77820	DOCUMENT NO. 10-504639-010	REV. PA1
SCALE: 3.0	REF. 10-504639-006	SHEET 2 OF 3	



SUGGESTED BACKPLANE BOARD CUTOUTS

(CONNECTOR SIDE SHOWN)

SCALE 6.000



REAR EXPLODED ASSEMBLY VIEW

SCALE 3.000

THE USE OF THIS DOCUMENT IS UNLIMITED. HOWEVER, DOCUMENTS REFERENCED HEREON MAY CONTAIN LIMITED RIGHTS DATA.

SIZE C	CAGE CODE 77820	DOCUMENT NO. 10-504639-010	REV. PA1
SCALE: 3.0	REF. 10-504639-006	SHEET 3 OF 3	