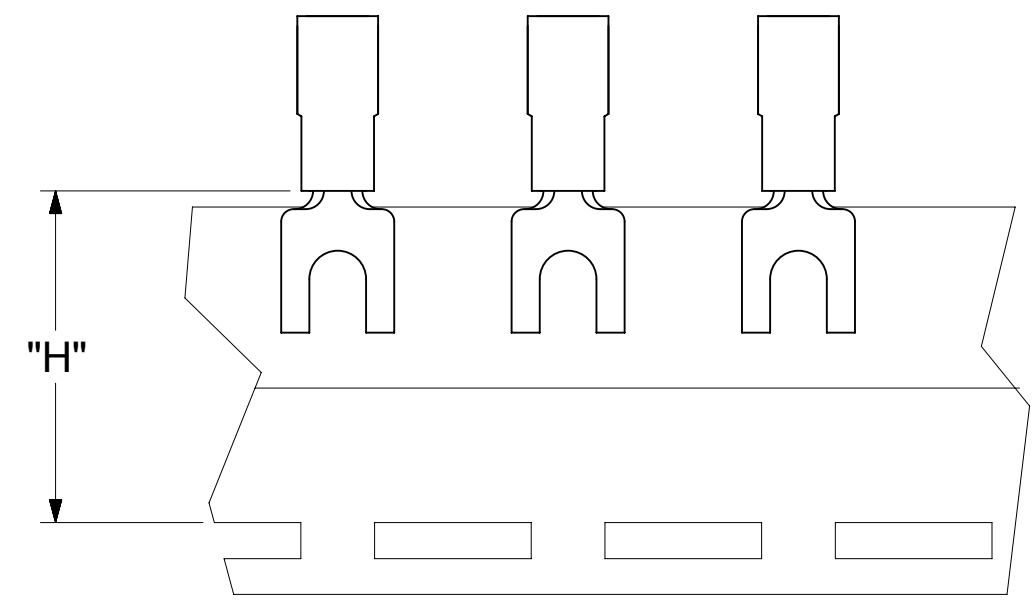
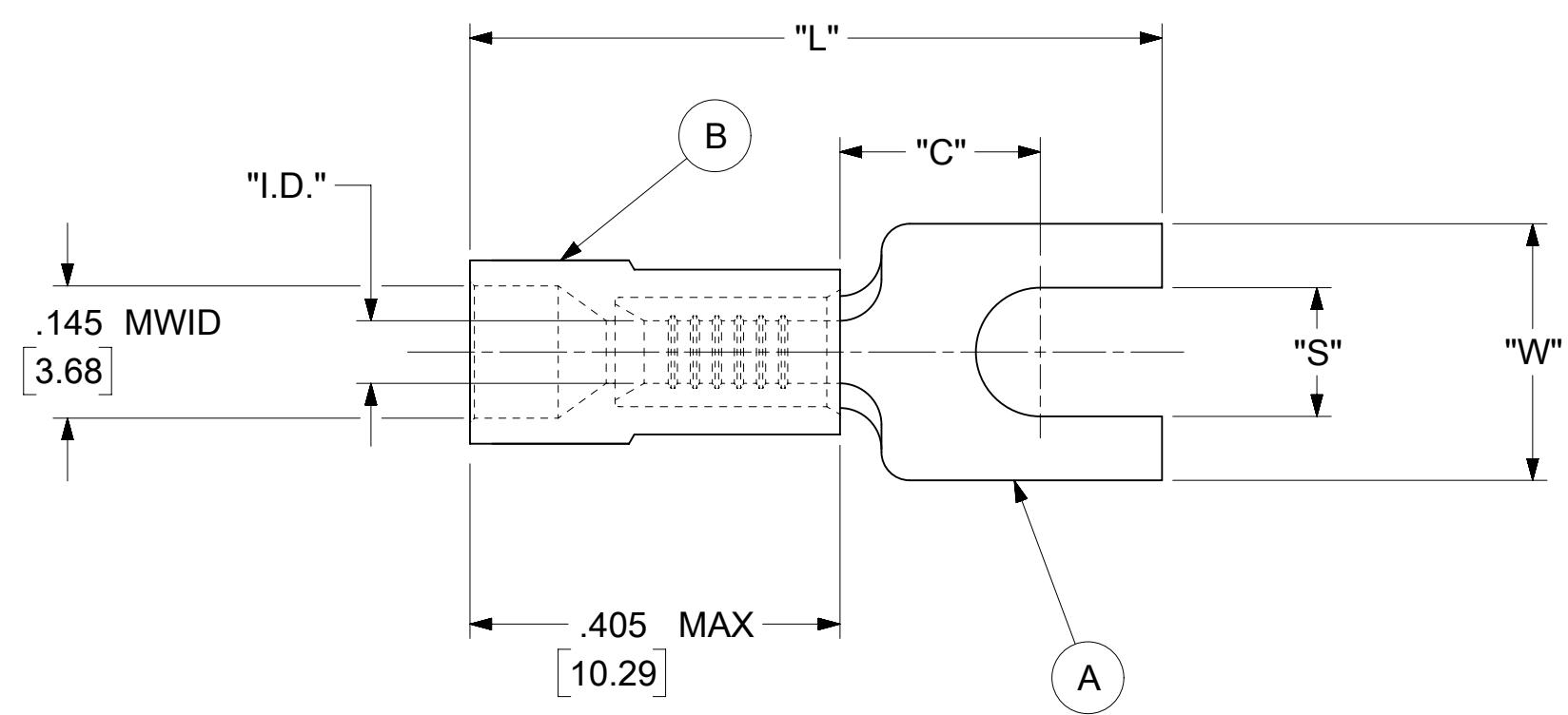


LOOSE PIECE		TAPE MOUNTED		SPECIFICATIONS								
MATERIAL NUMBER	ENGINEERING NUMBER	MATERIAL NUMBER	ENGINEERING NUMBER	STUD SIZE	"S" ±.005 [0.13]	"W" ±.010 [0.25]	"C" MIN.	"L" MAX.	"I.D." MIN.	"H"	STOCK THICKNESS	
191310047	AA-2109-02X	191310046	AA-2109-02XT	2	.094 [2.39]	.187 [4.75]	.183 [4.65]	.727 [18.47]	.054 [1.37]	.980 [24.89]	.031±.001 [0.79]	
191310045	AA-2109-04X	191310044	AA-2109-04XT	4	.119 [3.02]							
191310042	AA-2118-06X	191310041	AA-2118-06XT	6	.146 [3.71]	.250 [6.35]	.320 [8.13]	.895 [22.73]	.062 [1.57]	.980 [24.89]	.028 $\frac{+.000}{-.002}$ [0.71]	



NOTES:

- MATERIAL:
  - (A). TERMINAL: COPPER  
PLATING: ELECTRO-TIN (.0003 MIN.)
  - (B). INSULATION: MOLDED PVC (RED)
- MWID: MAXIMUM WIRE INSULATION DIAMETER
- WIRE SIZE: 22 -18 AWG  
0.25 -1.5 MM<sup>2</sup>
- "UL" LISTING #E32244  
"CSA" LISTING #18689
- ALL DIMENSIONS IN INCHES/[MM].
- PARTS ARE ROHS COMPLIANT.
- DIMS. SHOWN ARE FOR REFERENCE ONLY.

SYMBOLS	THIS DRAWING CONTAINS INFORMATION THAT IS PROPRIETARY TO MOLEX ELECTRONIC TECHNOLOGIES, LLC AND SHOULD NOT BE USED WITHOUT WRITTEN PERMISSION									
	DIMENSION UNITS		SCALE		CURRENT REV DESC:					
	INCH/MM		NTS		EC NO: 625846 DRWN: ABENJAMINLW 2019/09/04 CHK'D: GROJAS01 2019/10/17 APPR: JMACNEIL 2019/10/18 INITIAL REVISION: DRWN: JJ 1984/11/02 APPR:					
	GENERAL TOLERANCES (UNLESS SPECIFIED)									
▽ = 0	4 PLACES	±	---	±	---	PRODUCT CUSTOMER DRAWING DOCUMENT NUMBER: AACD20302 DOC TYPE: PSD DOC PART: 001 REVISION: A MATERIAL NUMBER: SEE TABLE CUSTOMER: GENERAL MARKET SHEET NUMBER: 1 OF 1				
▽ = 0	3 PLACES	±	---	±	.005					
▽ = 0	2 PLACES	±	0.13	±	.01					
▽ = 0	1 PLACE	±	0.25	±	---	THIRD ANGLE PROJECTION DRAWING: C-SIZE SERIES: 19131				
□ = 0	0 PLACES	±	---	±	---					
■ = 0	ANGULAR TOL ± 0.5°				DRAFT WHERE APPLICABLE MUST REMAIN WITHIN DIMENSIONS					