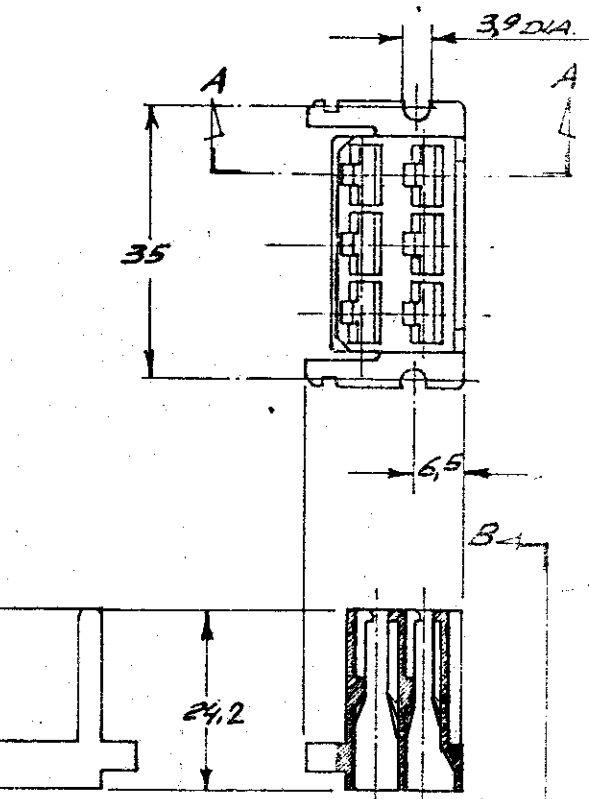
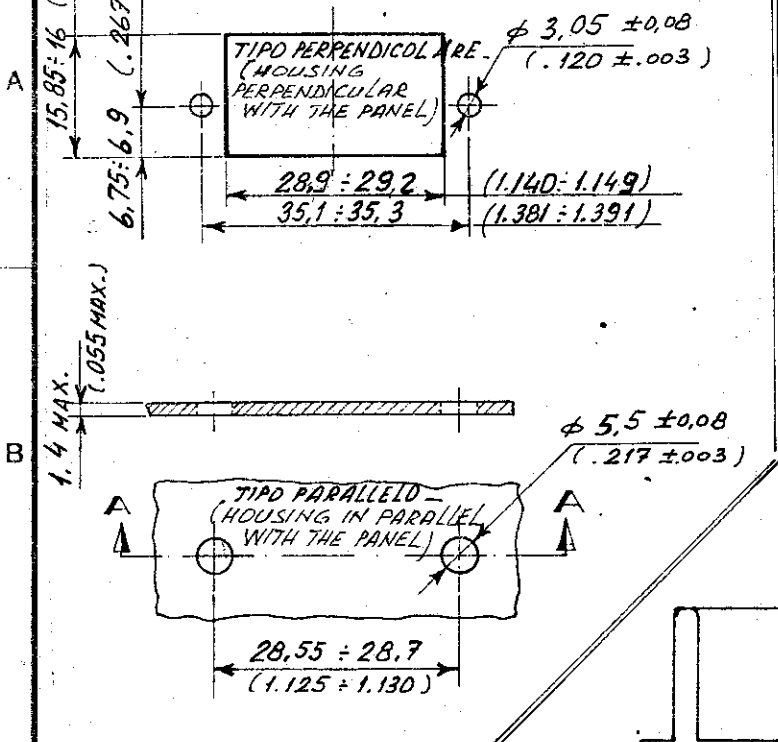


DIME DI FORATURA
(RECOMMENDED PANEL CUTOUT)

SCALA NON IMPEGNATIVA
(DO NOT SCALE)
DIMENSIONI IN mm
DIMENSIONS IN mm

METRIC

PROIEZIONE EUROPEA
(EUROPEAN PROJECTION)



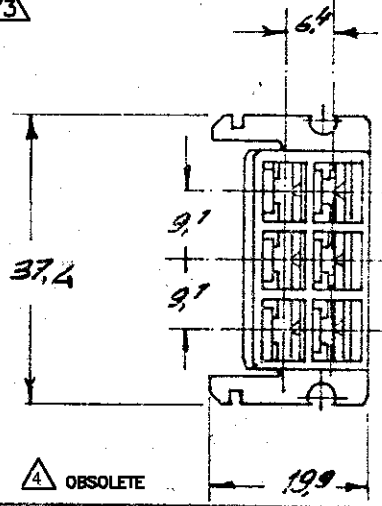
NOTE: Δ NON PRODOTTO DALL' TE ITALIA; SOLO PER PRODUZIONE TE GERMANY. (NOT PRODUCED BY TE ITALY; FOR TE GERMANY PRODUCT ONLY)

Δ OBSOLETE PARTS: OBSOLETE CIS STREAMLINING PER D.RENAUD/D.SINISI

VISTA B-B

SEZ. A-A
(SECT. A-A)

NOTE (NOTES)	COLORE (COLOUR)	MATERIALE (MATERIAL)	NUMERO (PART NUMBER)
Δ	NEUTRO (CLEAR)	POLIAMMIDE 6.6 ULTRAV. (PA 6.6 F.R. 94V-0)	180904-0
Δ	ARANCIO (ORANGE)		3-180904-0
Δ	VIOLETTA (VIOLET)		4-180904-0
Δ	GRIGIO (GRAY)		3-7
Δ	MARRONE (BROWN)		4-6
Δ	NERO (BLACK)		4-5
Δ	GIALLO (YELLOW)		3-4
Δ	BLU (BLUE)		3-3
Δ	VERDE (GREEN)		3-2
Δ	ROSSO (RED)		1
	NEUTRO (CLEAR)		180904-0



Δ SAME AS 180904-0 EXCEPT PACKAGING: TWO PLASTIC BAG WITH 20 PIECES ON CARTON BOX / 400

FINITURA / COLORE (FINISH / COLOUR)	MATERIALE (MATERIAL)	NUMERO (PART NUMBER)
CUSTOMER DWG. FOR REFERENCE ONLY	DISEGNO PER CLIENTE SOLO PER RIFERIMENTO	

AP2	ECR-10-022530	KK	11FEB11
AP1	REV PER ECO-10-000445	KK	JAN10
AP	Revised by ES-005V-0V	U	PROV
AN	Revised by ES00-011-97	AP	EN 77
AM	Revised by ES00-005Z-97	AP	OCT 97
AL	Revised for ET00-0005-97	EN	101
N	RIVISTO E RIDISEGNATO; ELIMINATI I PINS CON NUMERAZ. SERIE RATA (REVISED & REDRAWN; OBSOLETE PINS WITH EXTRA NUMBERING)	6-86	
REV.	REVISIONI (REVISION RECORD)	DIS.	DATA (DATE)

THIS DRAWING IS UNPUBLISHED - RELEASE FOR PUBLICATION

© COPYRIGHT 19 BY TE INCORPORATED, HARRISBURG, PA ALL INTERNATIONAL RIGHT RESERVED TE PRODUCTS MAY BE COVERED BY U.S. AND FOREIGN PATENT AND/OR PATENT PENDING

TOLLERANZE: SE NON DIVERSAMENTE SPECIFICATO (TOLERANCES UNLESS OTHERWISE SPECIFIED) $\pm 0,4$

ANGOLI (ANGLES) $\pm 2^\circ$

DIS. (DR.)

DESCRIZIONE (DESCRIPTION): **6 WAY FASTIN-FASTON REC. HOUSING - .250" SER.**

LOC. SIZE NUMERO (DWG. NO.) **ALA C-180904**

REV. AP2

Foglio 1 di 1

DISTRIBUZIONE (PRINT DIST.)