

Product Specification



Patch Antenna JLTD1176-1575S25-18P4-2A

Feature

High gain , Compact

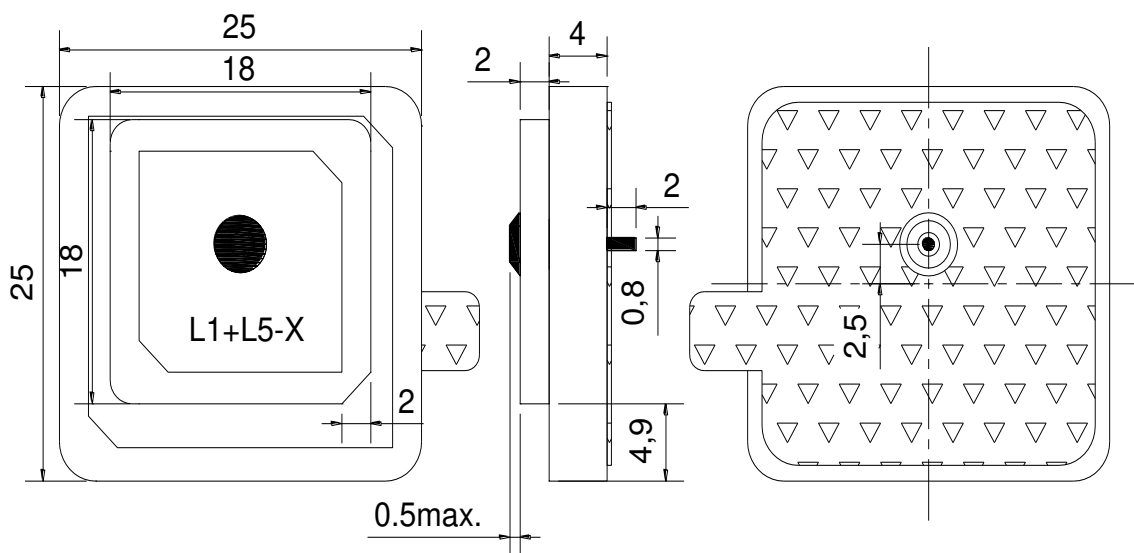
Pin type

Customization available

Electrical Specification

	L1	L5
Center Frequency	1575± 3.0 MHz	1176± 3.0 MHz
Return Loss @ F0	≥ 10dB	≥ 10dB
Polarization	RHCP	RHCP
Ground plane	27x27 mm	
Impedance	50 Ω	
Frequency Temperature Coefficient	±20 ppm/°C	
Operation Temperature Range	-40 ~ +85°C	

Mechanical Drawing



Tolerance Unless Otherwise Specified:±0.30
Unit: mm

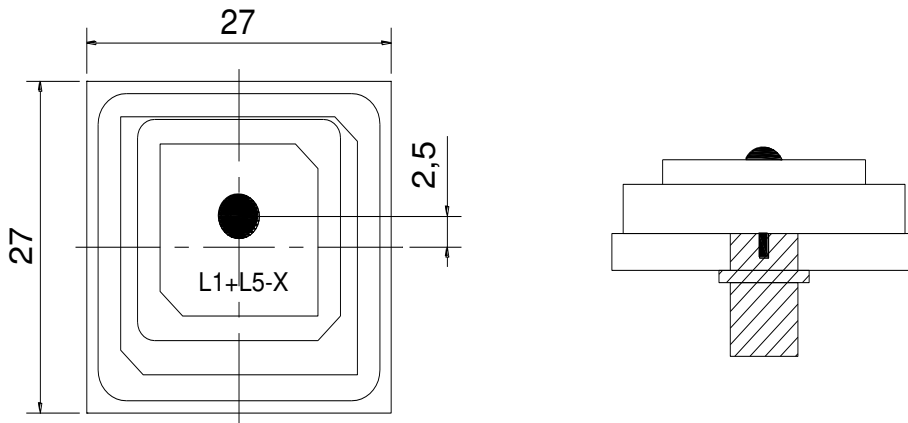
Product Specification



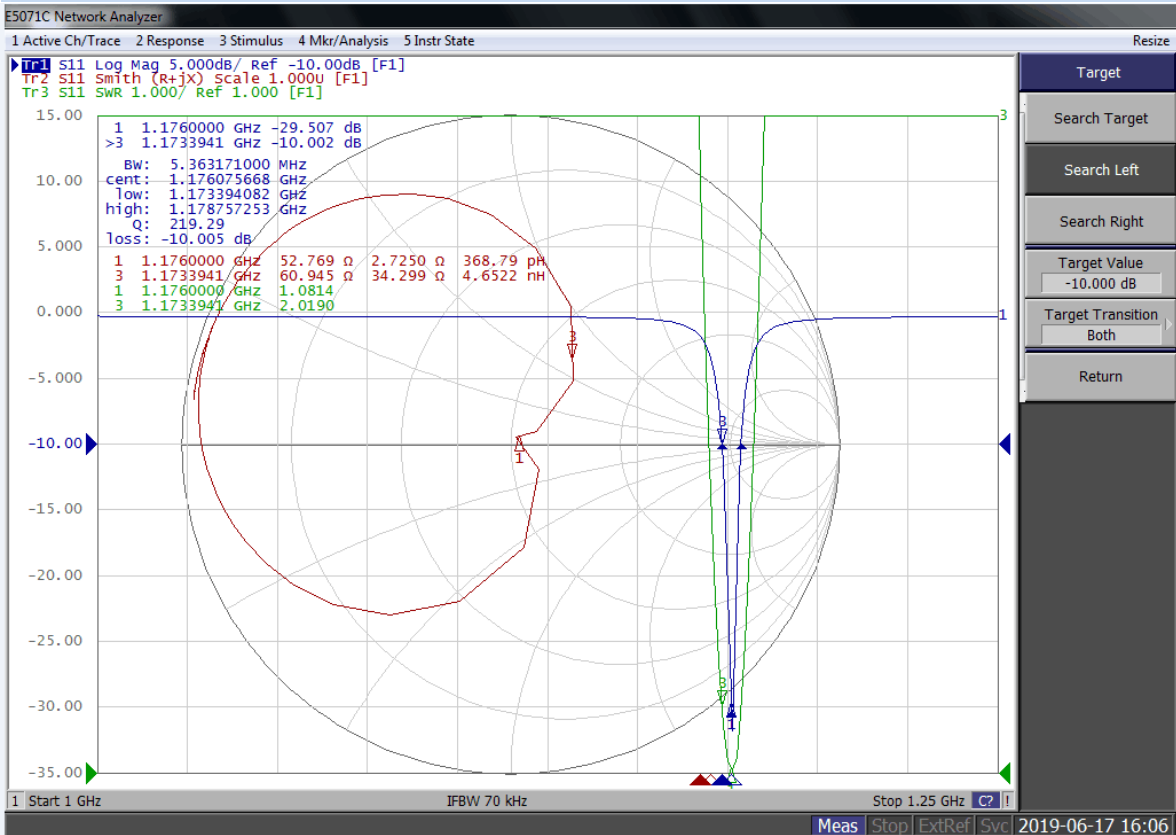
Patch Antenna

JLTD1176-1575S25-18P4-2A

Test Fixture



Characteristics



Product Specification



Patch Antenna



JLTD1176-1575S25-18P4-2A

Characteristics

