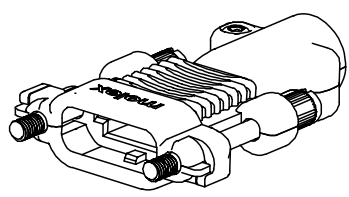
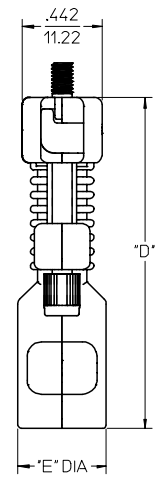
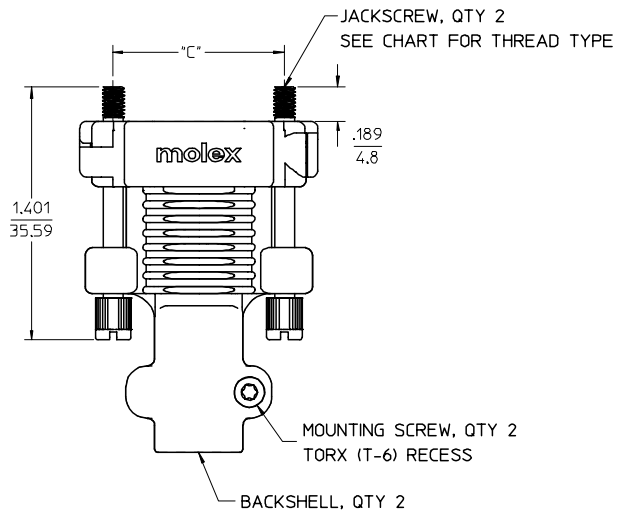
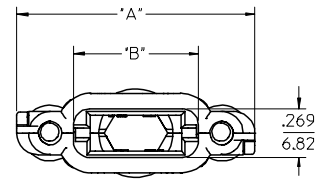


| CKT SIZE | *A* DIM     | *B* DIM     | *C* DIM     | *D* DIM     | *E* DIM    | CABLE OD   |
|----------|-------------|-------------|-------------|-------------|------------|------------|
| 18       | 1.320/33.55 | .691/17.56  | .950/24.13  | 1.835/46.62 | .490/12.45 | .310/7.87  |
| 28       | 1.570/39.90 | .941/23.91  | 1.200/30.48 | 1.835/46.62 | .490/12.45 | .335/8.51  |
| 38       | 1.820/46.25 | 1.191/30.26 | 1.450/36.83 | 2.270/57.65 | .490/12.45 | .355/9.02  |
| 48       | 2.070/52.60 | 1.441/36.61 | 1.700/43.18 | 2.478/62.93 | .569/14.45 | .440/11.18 |
| 72       | 2.670/67.84 | 2.041/51.85 | 2.300/58.42 | 2.741/69.62 | .726/18.45 | .635/16.13 |

- NOTES:
- MATERIALS:  
 BACKSHELL - ZINC ALLOY DIE CAST, FINISH BLACK POLYURETHANE ENAMEL.  
 JACKSCREW - STAINLESS STEEL, FINISH PASSIVATE.  
 MOUNTING SCREW - STEEL ALLOY, FINISH BLACK ZINC PLATING.
  - PLUG CABLE KIT COMPONENTS TO BE BULK PACKAGED PER PK-75115-993.
  - MOUNTING SCREW APPLICATION TORQUE TO BE MIN. 3 lbf-in AND NOT TO EXCEED 4 lbf-in.
  - STRAIN RELIEF IS DESIGNED FOR THE CABLE DIAMETER SPECIFIED IN TABLE ON THIS PAGE.  
 WHEN USING SMALLER CABLE DIAMETER, USE HEAT SHRINK TUBING TO BUILD UP THE CABLE TO SPECIFIED DIAMETER.



18 CKT PLUG CABLE KIT



|                                 |                               |              |            |                           |
|---------------------------------|-------------------------------|--------------|------------|---------------------------|
| 75115-4072                      | 75115-5072                    | 72           | X          | CONTACT PRODUCT MARKETING |
| 75115-4048                      | 75115-5048                    | 48           |            |                           |
| 75115-4038                      | 75115-5038                    | 38           | X          | CONTACT PRODUCT MARKETING |
| 75115-4028                      | 75115-5028                    | 28           |            |                           |
| 75115-4018                      | 75115-5018                    | 18           |            |                           |
| PLUG CABLE KIT (4-40 JACKSCREW) | PLUG CABLE KIT (M3 JACKSCREW) | CIRCUIT SIZE | NOT TOOLED |                           |

|  |                                   |   |                       |   |   |                        |                    |
|--|-----------------------------------|---|-----------------------|---|---|------------------------|--------------------|
| MOD JACKSCREW MATERIAL<br>EC NO: UCP2007-1309<br>DRWN: MSIBARRA 2007/02/27<br>CHKD: DMORGAN 2007/03/05<br>APPR: SMILLER 2007/03/06 | QUALITY SYMBOLS<br>▽ = 0<br>◻ = 0 | GENERAL TOLERANCES (UNLESS SPECIFIED)   |                       | SCALE 2:1   | DESIGN UNITS METRIC                                 | THIRD ANGLE PROJECTION | REVISE ON CAD ONLY |
|  |                                   | 4 PLACES ± --- ± ---<br>3 PLACES ± --- ± .010<br>2 PLACES ± 0.25 ± ---<br>1 PLACE ± --- ± ---                                 | DIMENSION STYLE IN/MM | TITLE SALES DRAWING TDP PLUG CABLE KIT BLACK AND NICKEL FINISH  |   |                        |                    |
|  |                                   | DRAFT WHERE APPLICABLE MUST REMAIN WITHIN DIMENSIONS  |                       | DRAWN BY DATE DMORGAN 2006/08/06<br>CHECKED BY DATE SMILLER 2006/08/06<br>APPROVED BY DATE SMILLER 2006/08/06 | MATERIAL NO. SEE CHART<br>DOCUMENT NO. SD-75115-003 | SHEET NO. 1 OF 1       |                    |
|  |                                   | THIS DRAWING CONTAINS INFORMATION THAT IS PROPRIETARY TO MOLEX INCORPORATED AND SHOULD NOT BE USED WITHOUT WRITTEN PERMISSION |                       |   |   |                        |                    |