

MATERIALS AND FINISHES

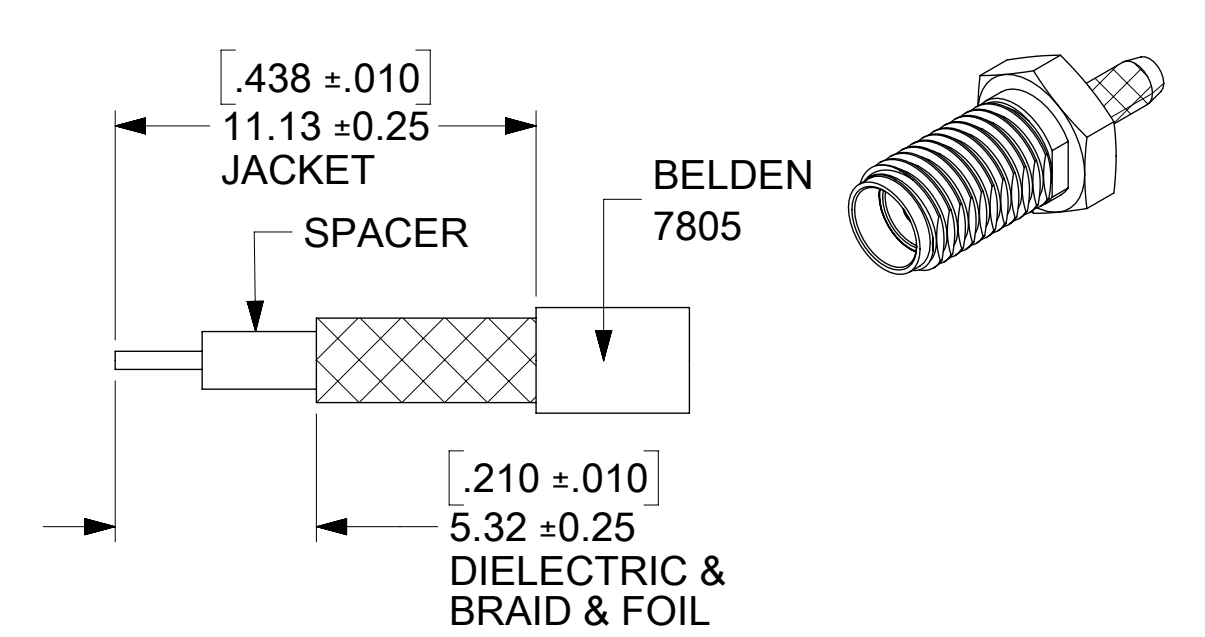
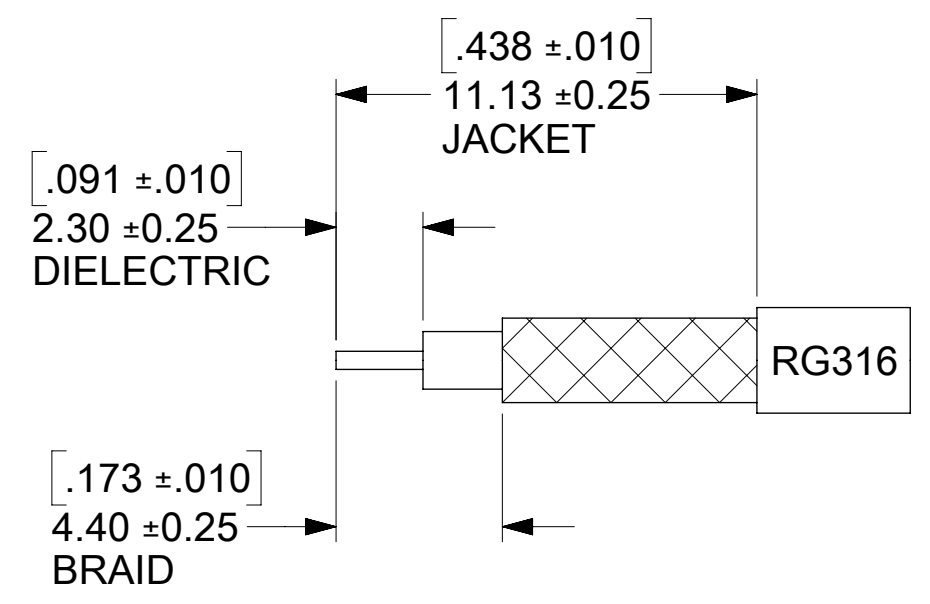
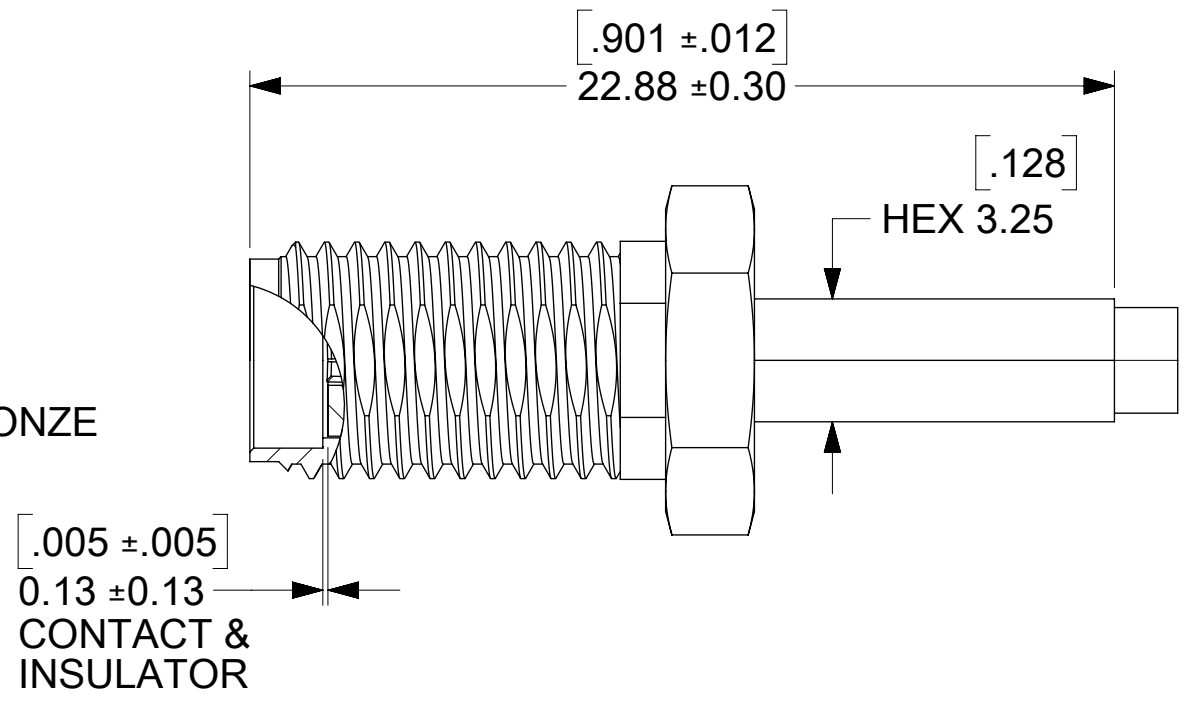
BODY, CRIMP TUBE: BRASS
PLATED SEE TABLE

CONTACT: BERYLLIUM COPPER
PLATED SEE TABLE

LOCK WASHER: PHOSPHOR BRONZE
PLATED SEE TABLE

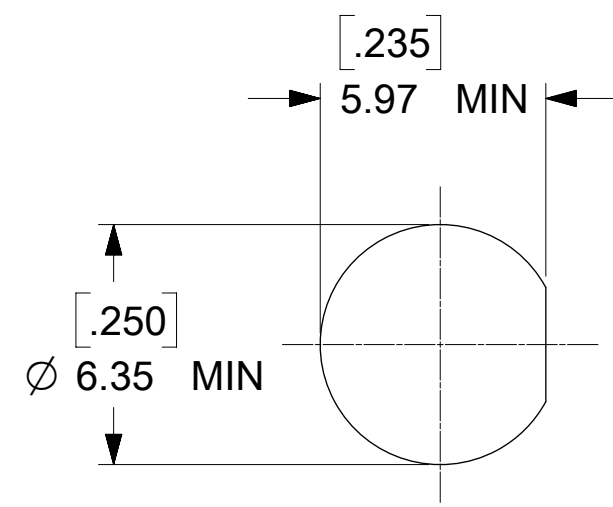
JAM NUT: BRASS
PLATED SEE TABLE

INSULATOR, SPACER: TEFLON

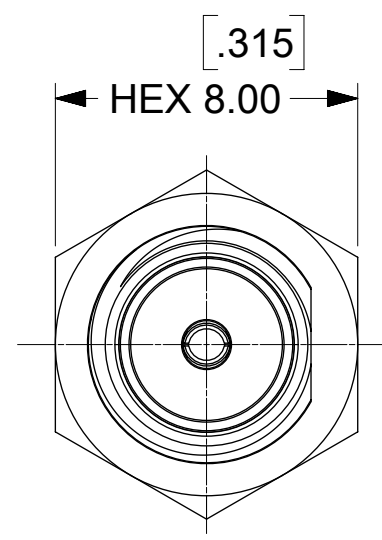


CABLE STRIPPING DIMENSIONS FOR -0260 THRU -0262 & -0264 & -0266

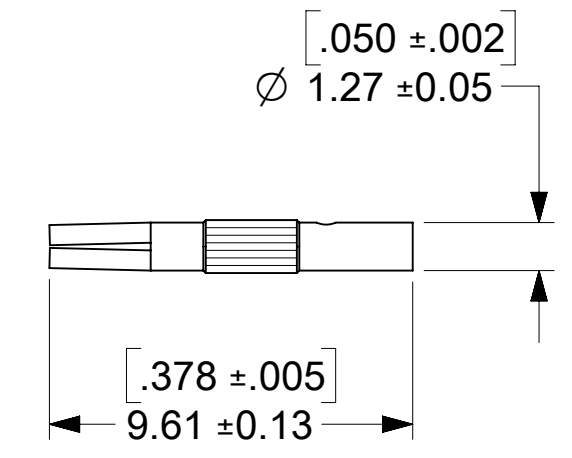
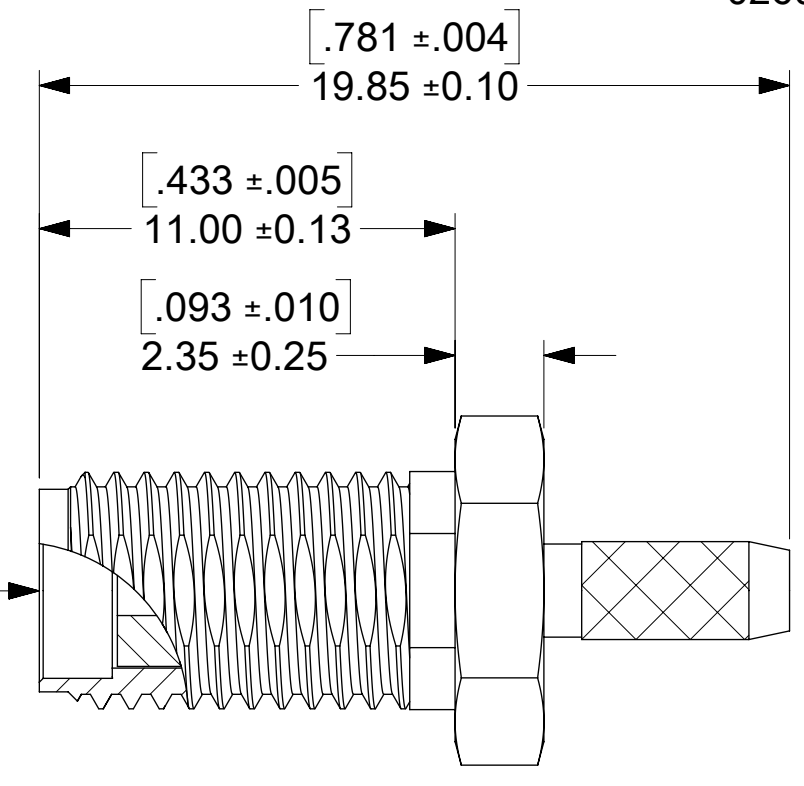
CABLE STRIPPING DIMENSIONS FOR -0263 ONLY



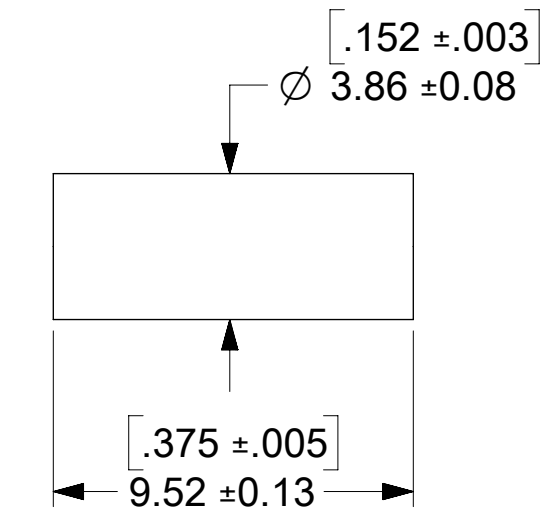
RECOMMENDED PANEL CUTOUT
MAX PANEL THICKNESS 3.18 (.125)



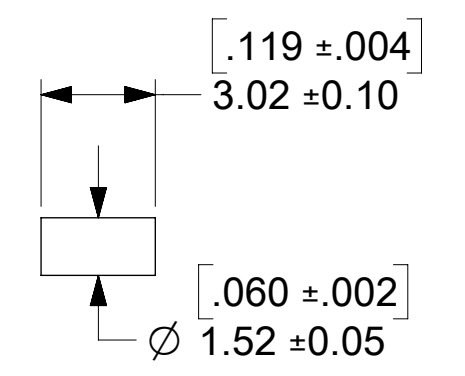
SMA JACK INTERFACE



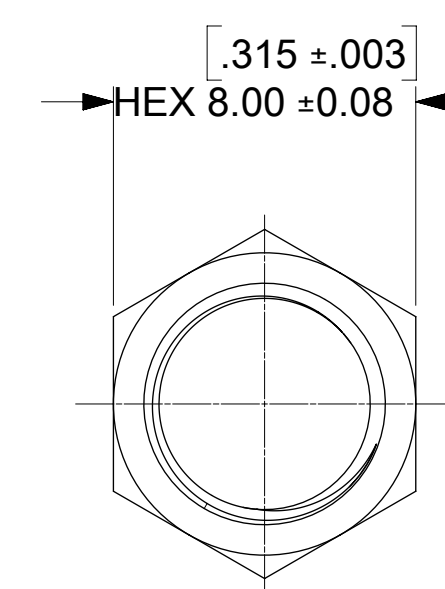
CONTACT



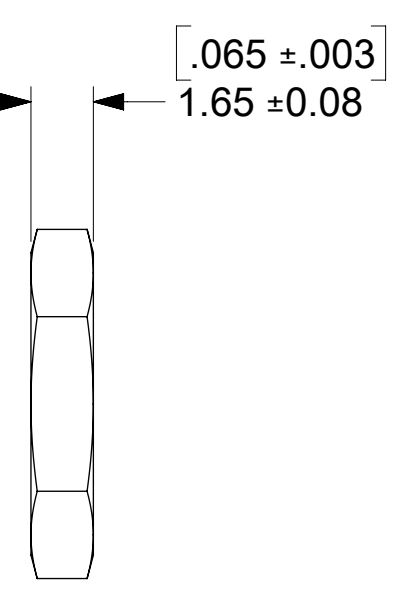
CRIMP TUBE



SPACER FOR -0263 ONLY



JAM NUT



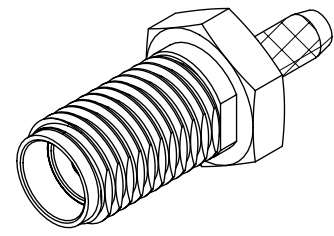
LOCK WASHER

73391-0266	GOLD (FLASH)	GOLD (10 MICRO-IN MIN)	GOLD (FLASH)	GOLD (10 MICRO-IN MIN)
73391-0265	GOLD (30 MICRO-IN MIN)	GOLD (30 MICRO-IN MIN)	GOLD (30 MICRO-IN MIN)	GOLD (30 MICRO-IN MIN)
73391-0264	GOLD (FLASH)	GOLD (FLASH)	GOLD (FLASH)	GOLD (10 MICRO-IN MIN)
73391-0263	GOLD (10 MICRO-IN MIN)	GOLD (30 MICRO-IN MIN)	NOT INCLUDING	NOT INCLUDING
73391-0262	GOLD (10 MICRO-IN MIN)	GOLD (30 MICRO-IN MIN)	NOT INCLUDING	NOT INCLUDING
73391-0261	GOLD (FLASH)	GOLD (10 MICRO-IN MIN)	NOT INCLUDING	NOT INCLUDING
73391-0260	GOLD (FLASH)	GOLD (10 MICRO-IN MIN)	GOLD (FLASH)	GOLD (10 MICRO-IN MIN)
PART NO.	BODY/CRIMP TUBE	CONTACT	JAM NUT	LOCK WASHER

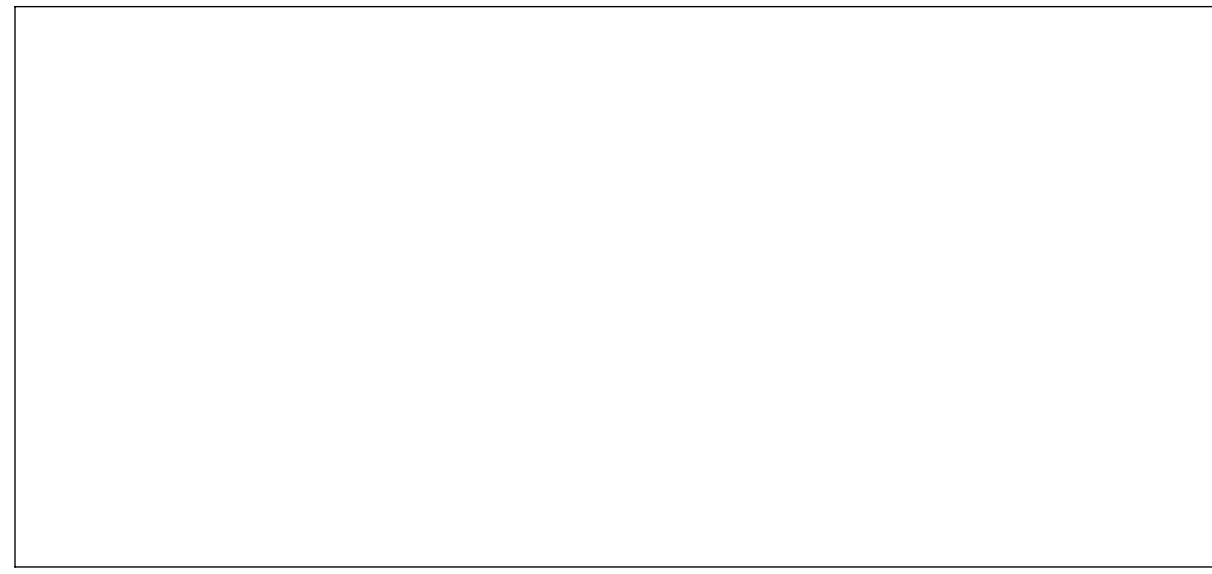
73391-0266	50PCS PER BAG	50PCS PER BAG
73391-0265	50PCS PER BAG	250PCS PER BAG
73391-0264	50PCS PER BAG	250PCS PER BAG
73391-0263	50PCS PER BAG	NOT INCLUDING
73391-0262	50PCS PER BAG	NOT INCLUDING
73391-0261	50PCS PER BAG	NOT INCLUDING
73391-0260	50PCS PER BAG	250PCS PER BAG
PART NO.	CONNECTOR PACKAGING	ACCESSORIES PACKAGING

PS-89675-346	ELEC/MECH PERFORMANCE
SPECIFICATION	DESCRIPTION

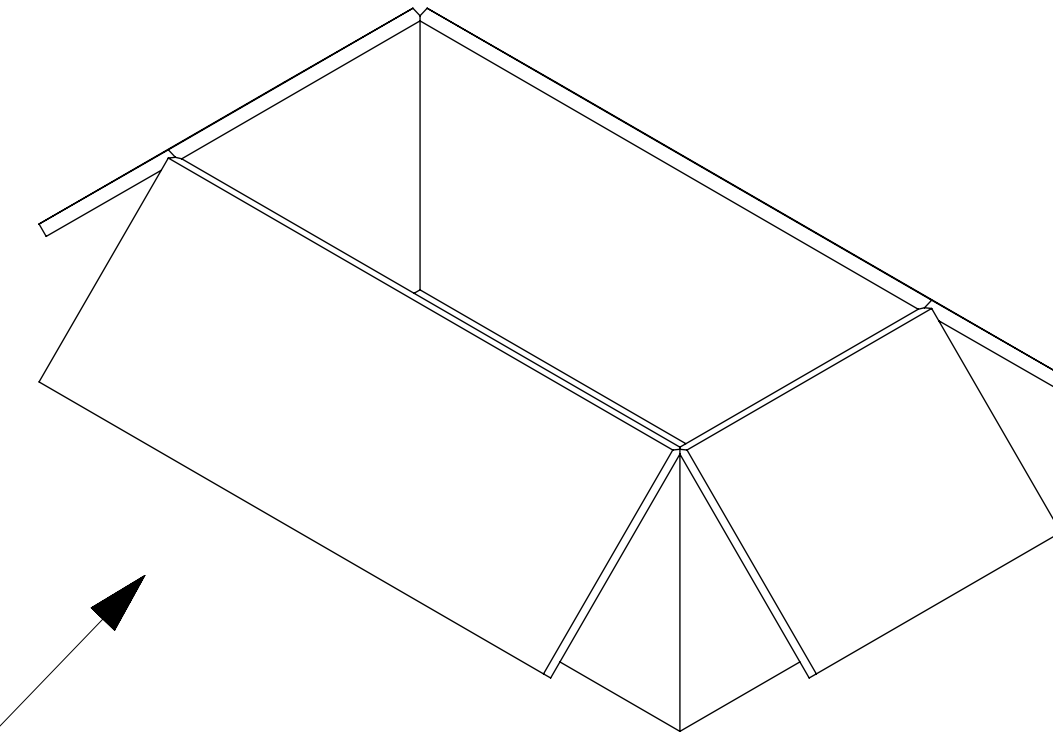
FUNCTIONAL SYMBOLS DIMENSION UNITS SCALE CURRENT REV DESC: EWR # 15667-A : ADDED -0266 PART NO	THIS DRAWING CONTAINS INFORMATION THAT IS PROPRIETARY TO MOLEX ELECTRONIC TECHNOLOGIES, LLC AND SHOULD NOT BE USED WITHOUT WRITTEN PERMISSION				
	GENERAL TOLERANCES (UNLESS SPECIFIED) ANGULAR TOL ± °				EC NO: 738061 DRWN: JSU18 CHK'D: YCHENG APPR: YCHENG
	DIVISIONAL SYMBOLS 4 PLACES ± 3 PLACES ± 2 PLACES ± 1 PLACE ± 0 PLACES ±	INITIAL REVISION: DRWN: AROBERTSON APPR: JWIENER	2007/04/09 2007/04/09	PRODUCT CUSTOMER DRAWING DOCUMENT NUMBER: SD-73391-026 DOC TYPE: PSD DOC PART: 000 REVISION: B9	
	DRAFT WHERE APPLICABLE MUST REMAIN WITHIN DIMENSIONS	THIRD ANGLE PROJECTION 	DRAWING: C-SIZE SERIES: 73391	MATERIAL NUMBER: SEE TABLE CUSTOMER: GENERAL MARKET	SHEET NUMBER: 1 OF 3



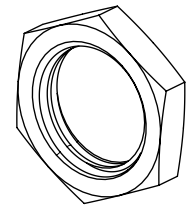
P/N: 73391-0260
 73391-0261
 73391-0262
 73391-0263
 73391-0264
 73391-0265



50 SET PER BAG
 P/N: 89707-0174



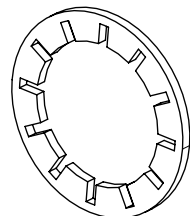
250 SET PER INNER
 CARTON BOX
 P/N: 89499-9026



JAM NUT



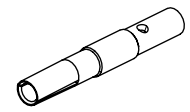
250 SET PER BAG



LOCK WASHER



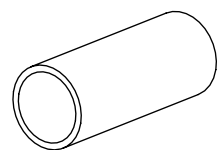
250 SET PER BAG



CONTACT



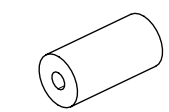
250 SET PER BAG



CRIMP TUBE



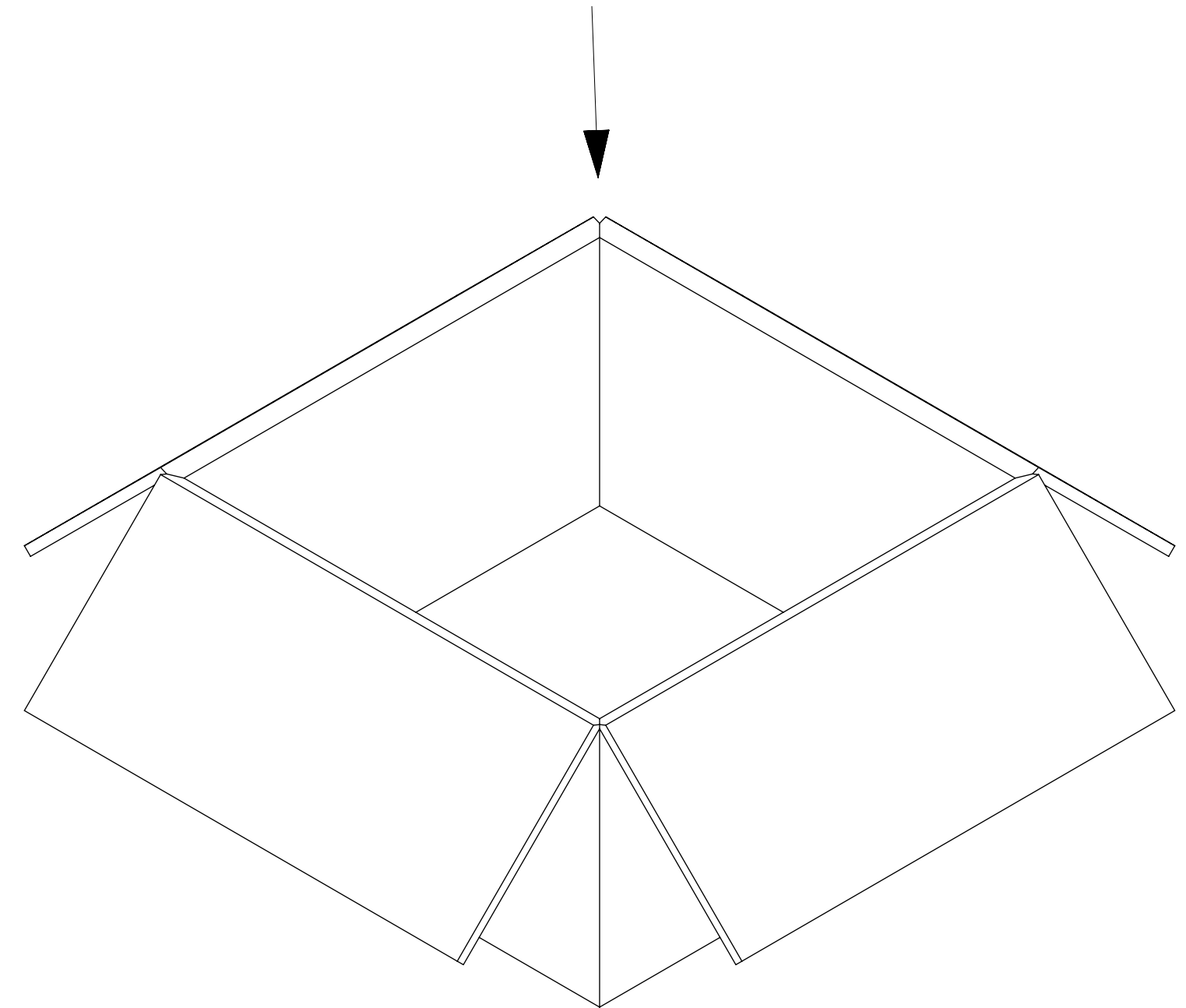
250 SET PER BAG



SPACER
 FOR -0263 ONLY



250 SET PER BAG



500 SET PER OUTER
 CARTON BOX
 P/N: 89499-9027

FUNCTIONAL SYMBOLS	THIS DRAWING CONTAINS INFORMATION THAT IS PROPRIETARY TO MOLEX ELECTRONIC TECHNOLOGIES, LLC AND SHOULD NOT BE USED WITHOUT WRITTEN PERMISSION										
	DIMENSION UNITS	SCALE	CURRENT REV DESC: EWR # 15667-A : ADDED -0266								PART NO
$\frac{E}{A} = 0$	MM/INCH	NTS	EC NO: 738061 DRWN: JSU18 2023/02/08 CHK'D: YCHENG 2023/02/21 APPR: YCHENG 2023/02/21								
$\frac{E}{C} = 0$	GENERAL TOLERANCES (UNLESS SPECIFIED)										
$\frac{E}{P} = 0$	ANGULAR TOL ± °		INITIAL REVISION:								PRODUCT CUSTOMER DRAWING
DIVISIONAL SYMBOLS	4 PLACES ±		DRWN: AROBERTSON 2007/04/09								DOCUMENT NUMBER
	3 PLACES ±		APPR: JWIENER 2007/04/09								SD-73391-026
	2 PLACES ±										DOC TYPE
	1 PLACE ±										PSD
	0 PLACES ±										DOC PART
	DRAFT WHERE APPLICABLE MUST REMAIN WITHIN DIMENSIONS		THIRD ANGLE PROJECTION	DRAWING	SERIES	MATERIAL NUMBER		CUSTOMER	SHEET NUMBER		
				C-SIZE	73391	GENERAL MARKET		000	B9		

molex

SMA JACK STR BKHD RM FOR RG316/RG174
SMA-JC

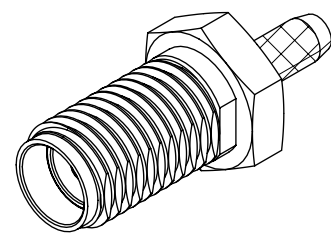
PRODUCT CUSTOMER DRAWING

SD-73391-026

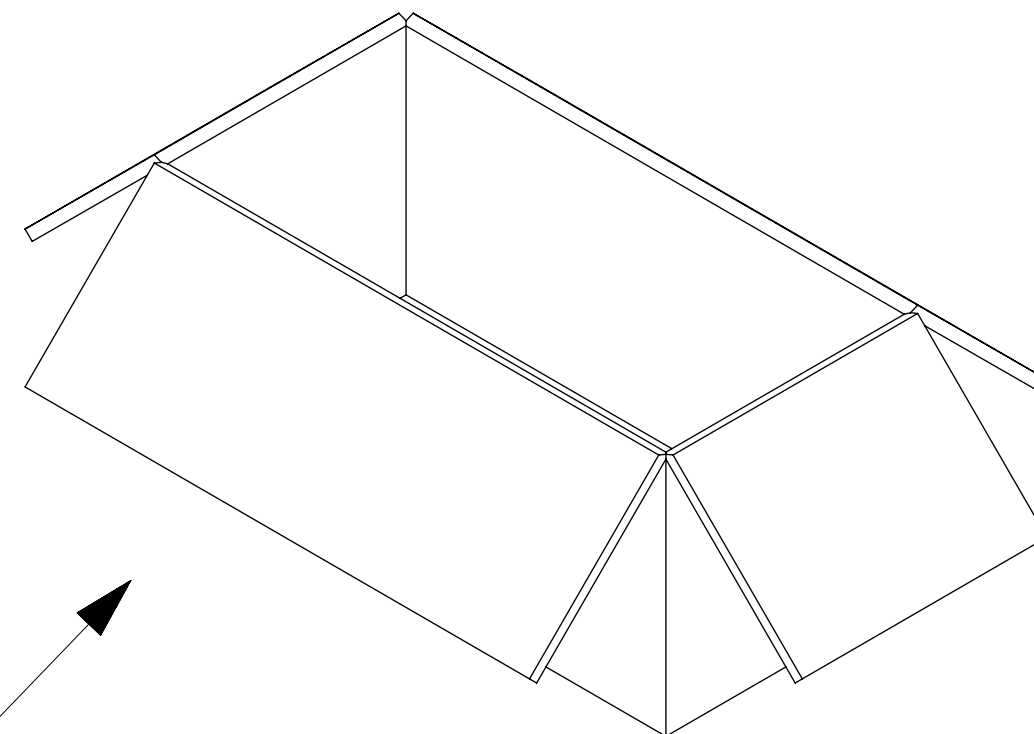
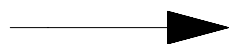
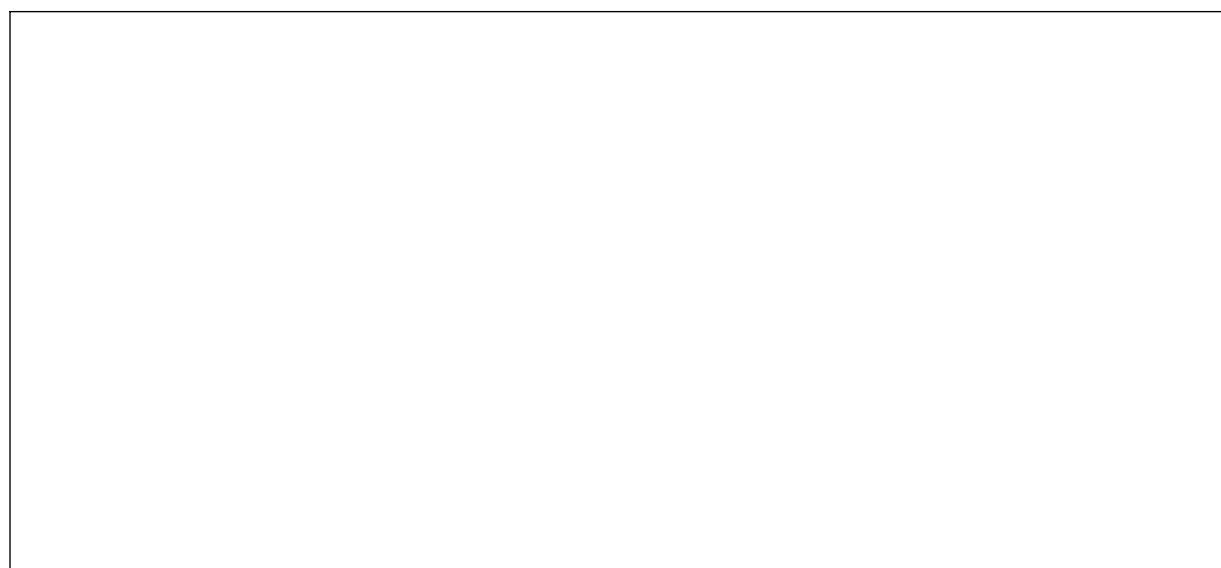
DOC PART REVISION

PSD 000 B9

GENERAL MARKET 2 OF 3

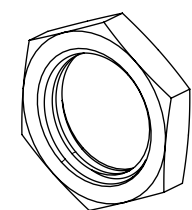


P/N: 73391-0266



50 SET PER BAG
P/N: 89707-0174

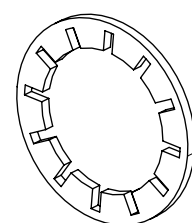
250 SET PER INNER
CARTON BOX
P/N: 89499-9026



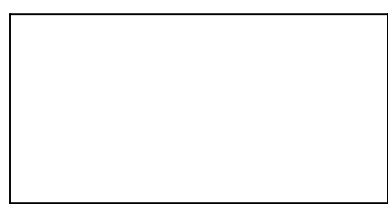
JAM NUT



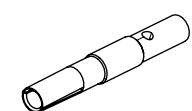
50 SET PER BAG



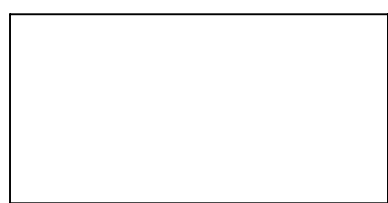
LOCK WASHER



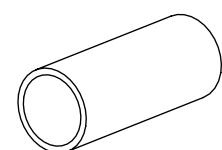
50 SET PER BAG



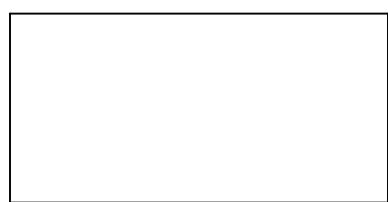
CONTACT



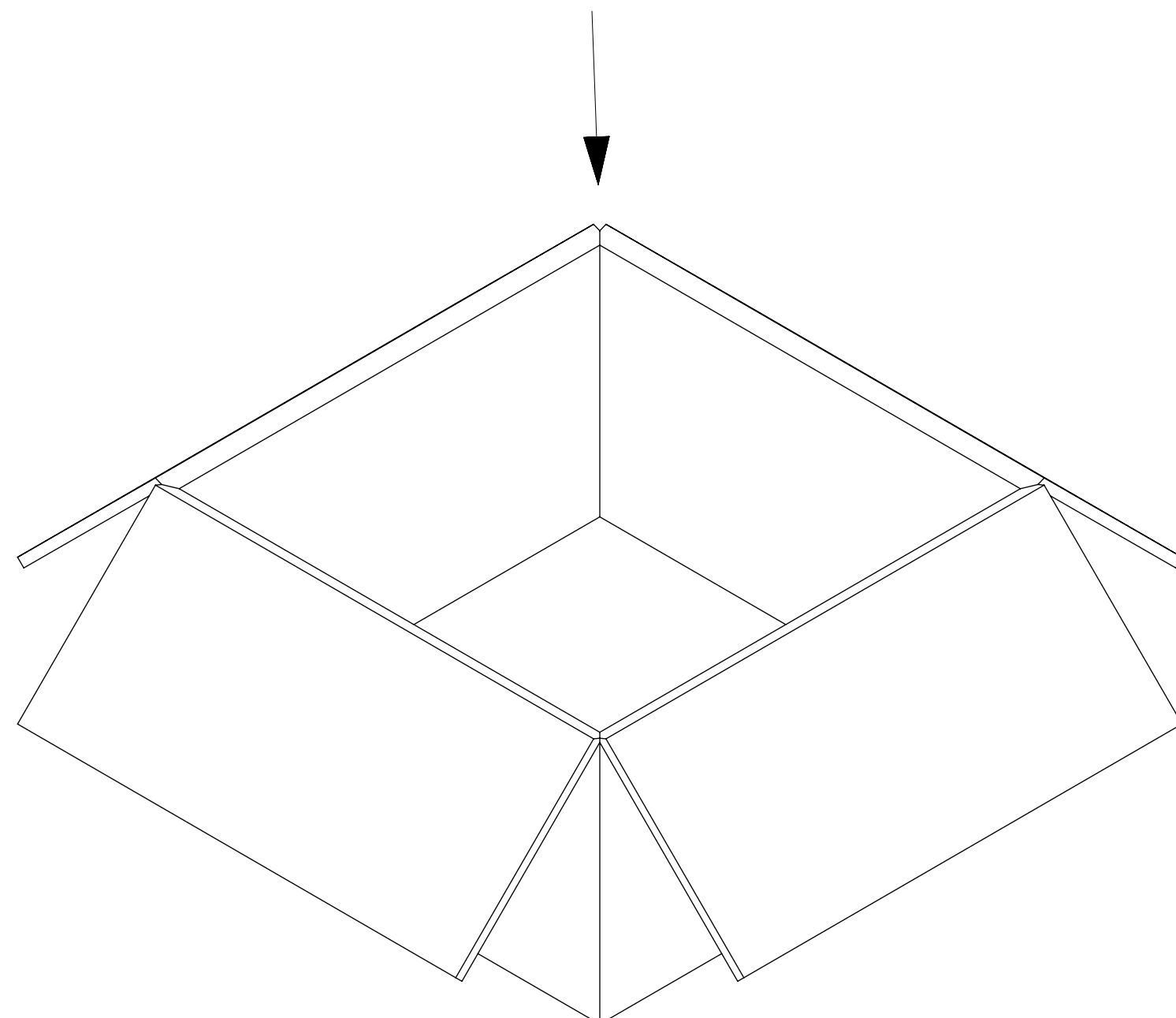
50 SET PER BAG



CRIMP TUBE



50 SET PER BAG



500 SET PER OUTER
CARTON BOX
P/N: 89499-9027

FUNCTIONAL SYMBOLS	THIS DRAWING CONTAINS INFORMATION THAT IS PROPRIETARY TO MOLEX ELECTRONIC TECHNOLOGIES, LLC AND SHOULD NOT BE USED WITHOUT WRITTEN PERMISSION											
	DIMENSION UNITS	SCALE	CURRENT REV DESC: EWR # 15667-A : ADDED -0266							molex		
	$\frac{E}{A} = 0$	MM/INCH NTS	PART NO									
	GENERAL TOLERANCES (UNLESS SPECIFIED)											
$\frac{E}{C} = 0$	ANGULAR TOL		±	°	EC NO: 738061					SMA JACK STR BKHD RM FOR RG316/RG174 SMA-JC		
DIVISIONAL SYMBOLS	4 PLACES		±	DRWN: JSU18 2023/02/08							PRODUCT CUSTOMER DRAWING	
	3 PLACES		±	CHK'D: YCHENG 2023/02/21							DOCUMENT NUMBER	
	2 PLACES		±	APPR: YCHENG 2023/02/21							DOC PART	
	1 PLACE		±	INITIAL REVISION:							REVISION	
0 PLACES		±	DRWN: AROBERTSON 2007/04/09							SD-73391-026		
0 PLACES		±	APPR: JWIENER 2007/04/09							PSD 000 B9		
DRAFT WHERE APPLICABLE MUST REMAIN WITHIN DIMENSIONS			THIRD ANGLE PROJECTION		DRAWING	SERIES	MATERIAL NUMBER		CUSTOMER	SHEET NUMBER		
					C-SIZE	73391	GENERAL MARKET		3 OF 3			

DOCUMENT STATUS	P1	RELEASE DATE	2023/02/21	04:15:15
-----------------	----	--------------	------------	----------