

DIMENSIONS(mm/in)					
SIZE	A ± 0.381 ± 0.015	B ± 0.254 ± 0.010	C ± 0.381 ± 0.015	D ± 0.381 ± 0.015	E ± 0.381 ± 0.015
9	31.24	24.99	35.05	16.00	8.89
	1.230	0.984	1.380	0.630	0.350
15	39.62	33.32	40.89	16.00	9.50
	1.560	1.312	1.610	0.630	0.374
25	53.34	47.04	45.97	16.00	11.18
	2.100	1.852	1.810	0.630	0.444
37	69.60	63.50	45.97	16.00	11.18
	2.740	2.500	1.810	0.630	0.444
50	67.31	61.00	45.97	18.67	13.79
	2.650	2.406	1.810	0.735	0.543

NOTE:

HOUSING MATERIAL (METALIZED):
OPERATING TEMPERATURE :

NICKEL PLATED THERMOPLASTIC, UL94 V-0
-55°C TO +140°C

BACKSHELL KIT INCLUDES:

- (2) BACKSHELL HALVES
- (2) #4-40 MATING SCREWS
- (2) STRAIN RELIEF CLAMPS*
- (2) STRAIN RELIEF SCREWS

GROUND LEAF SPRING

- (0) 9 POSITION KIT
- (1) 15 & 25 & 37 & 50 POSITION KIT

CABLE SLOT BLOCK TAB:

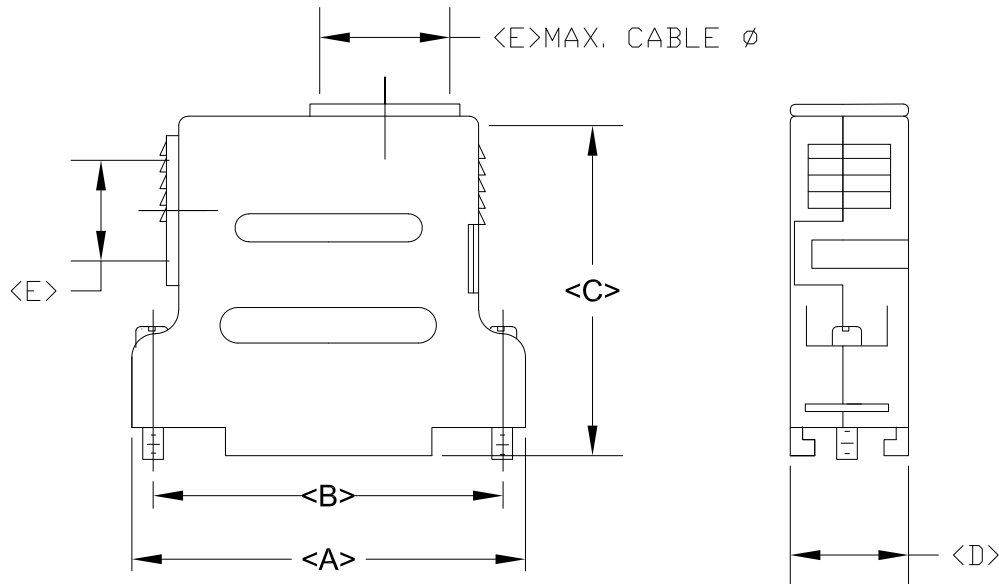
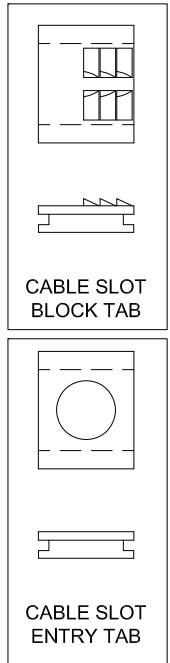
- (0) 9 POSITION KIT
- (1) 15 & 25 & 37 & 50 POSITION KIT

CABLE SLOT ENTRY TAB:

- (0) 9 POSITION KIT (METALIZED)
- (1) 15 & 25 & 37 & 50 POSITION KIT (METALIZED)

HOUSING SCREWS:

- (2) 9 & 15 POSITION KIT
- (3) 25 & 37 & 50 POSITION KIT



*NOTE => 9 POSITION KIT DOES NOT HAVE 90° ENTRY
AND ONLY COMES WITH (1) STRAIN RELIEF CLAMP

982-YYY-YYYRYY1

SERIES _____

POSITIONS _____

009
015
025
037
050

MATERIAL _____

010 = PLASTIC (DISCONTINUED)
020 = METALIZED PLASTIC

COLOR: _____

03 = GREY (DISCONTINUED)
12 = (THERMOPLASTIC) NICKEL OVER COPPER

PUT-UPS _____

1 = KIT

RoHS COMPLIANT

UNITS = shown in table

DO NOT SCALE FROM DRAWING



THESE DRAWINGS AND SPECIFICATIONS ARE THE PROPERTY OF NorComp AND SHALL NOT BE REPRODUCED, COPIED OR USED AS THE BASIS FOR THE MANUFACTURE OR SALE OF APPARATUS WITHOUT WRITTEN PERMISSION.

DRAWN:
P. JENKINS

DATE:
03/06/2006

NorComp

SCALE:
NTS

SHEET OF
1 1

REV
7

DWG NO.

982-YYY-0Y0RYY1