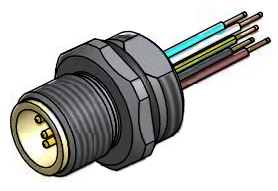


Contact assignment:

- 1 brown
- 2 white
- 3 blue
- 4 black
- 5 green-yellow

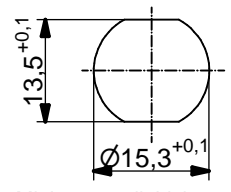


Technical specification:

Rated voltage: IEC 61076-2-101	4pos 5pos 250 V 60 V
Current rating: IEC 61076-2-101	4 A at 40°C
Insulation resistance: IEC 60512	>=100 MΩ
Pollution degree: IEC 60664-1	3/2
Degree of protection: DIN 40050-9	IP 69K, in mated condition
Temperature range: IEC 60664-1	-30°C ... +105°C
Mating cycles: IEC 60512-9a	>=100
Materials:	
Contact:	CuZn
Contact plating:	Nickel, gold plated
Contact carrier:	PP GF, UL 94
Sealing:	FPM
Socket housing:	1.4404, stainless steel
Grouting:	Polyurethane-resin, UL 94

Installation specification:

recommended torque:	1-1,2 Nm
Conec installation tool:	Torque wrench: 36-000200 Insert across flats 17: 36-000230



Minimum wall thickness 1,5mm, alternativ panel cut-out d=15,3

Part no:	Description:	Pos	Length L:	Wire:
43-01106	SAL - FB - 12 - FS4 - 0,5 - 9	4	0,5m	AWG 24 PVC, UL
43-xxxxx	SAL - FB - 12 - FS4 - ... - 9	4	x	
43-01108	SAL - FB - 12 - FS5 - 0,5 - 9	5	0,5m	
43-xxxxx	SAL - FB - 12 - FS5 - ... - 9	5	x	

DO NOT ALTER CAD DRAWING BY HAND
Directive 2002/95/EC RoHS compliant

Index: b 31.08.10 fro Ä3696
Data sheet revised, technical specification changed, Sleeve side B removed

tolerance of wire: L ≤ 0,5m: L + 20mm
L > 0,5m: L + 4%

THIS DRAWING MAY NOT BE COPIED OR REPRODUCED IN ANY WAY, AND MAY NOT BE PASSED ON TO A THIRD PARTY WITHOUT WRITTEN PERMISSION.
OWNERSHIP AND COPYRIGHT OF CONEC GmbH

dim. in mm

	date	name
drawn	01.03.07	Fromm
appd.	01.03.07	Mankopf

CONEC®

title:
Male socket M12x1 with wire, frontmounting, FB, PG9

dwg no:
43K1A352

part no: