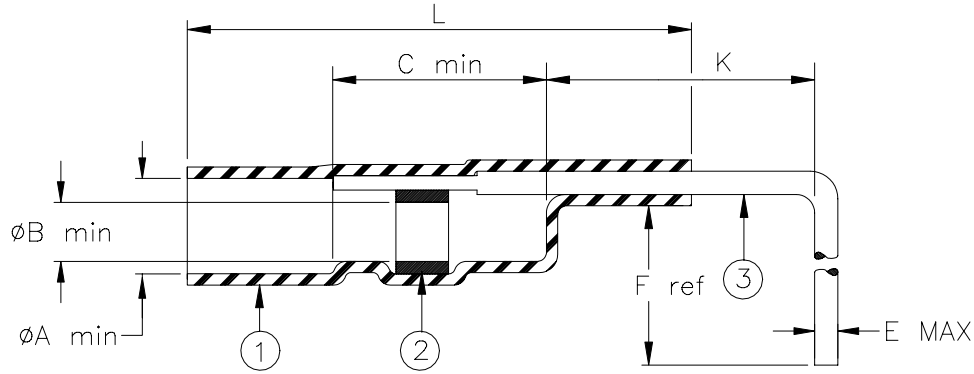


SPECIFICATION CONTROL DRAWING



Product Revision		Product Dimensions						
Product Name		L ±1.5 (L ±0.06)	φA min	φB min	C min	K ±0.65 (K ±0.025)	E max	F ref
D-141-0091	G	15.0 (0.600)	1.65 (0.065)	1.15 (0.045)	5.10 (0.200)	4.45 (0.175)	0.68 (0.027)	8.9 (0.350)

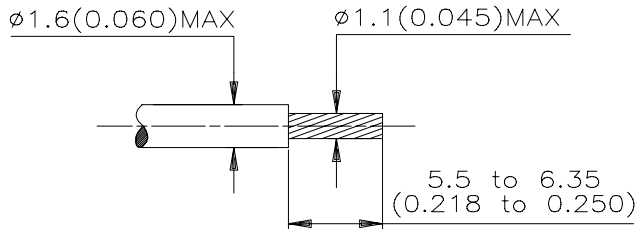
MATERIALS

1. INSULATION SLEEVE: Heat-shrinkable, transparent blue, radiation cross-linked modified polyvinylidene fluoride.
2. SOLDER PREFORM WITH FLUX:
 SOLDER: TYPE Sn63 per ANSI-J-STD-006.
 FLUX: TYPE ROL1 per ANSI-J-STD-004.
3. PREINSTALLED LEAD: 22AWG 0.68 (.027) max dia., solder plated phosphor bronze.

APPLICATION

1. This part is designed to attach a 28 to 22 gauge stranded wire to a printed circuit board. Hole dia.: .032.
2. Temperature range: -55°C to +150°C. Parts may be installed by convection or infrared heating.

For best results, prepare the cable as shown:



* A trademark of Raychem Corporation.

Raychem		THERMOFIT DEVICES		Raychem Corporation 300 Constitution Drive Menlo Park, CA 94025 USA		TITLE: SOLDERSLEEVE* WITH PRE-INSTALLED LEAD			
UNLESS OTHERWISE SPECIFIED DIMENSIONS ARE IN MILLIMETERS. INCHES DIMENSIONS ARE BETWEEN BRACKETS.				DOCUMENT NO: D-141-0091					
TOLERANCES: 0.00 N/A 0.0 N/A 0 N/A		ANGLES: N/A		Raychem reserves the right to amend this drawing at any time. Users should evaluate the suitability of the product for their application.		DCR NUMBER: D990178		REPLACES: D980911	
DRAWN BY: M. FORONDA		DATE: 03/22/99				PROD. REV. SEE TABLE		DOC ISSUE: 4	
						SIZE: A		SHEET: 1 of 1	

If this document is printed it becomes uncontrolled. Check for the latest revision