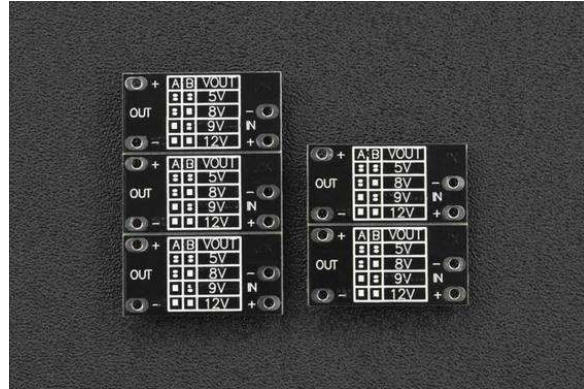
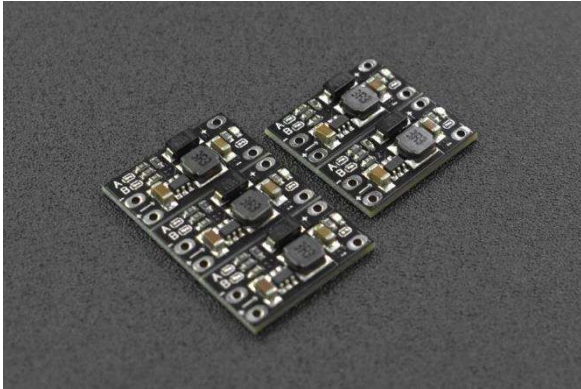




**DFROBOT**  
DRIVE THE FUTURE

# DC-DC Boost Power Supply Module (5PCS)

SKU: DFR0952



## INTRODUCTION

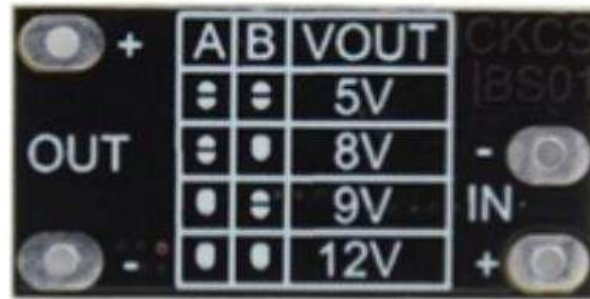
This DC-DC boost power supply module steps up any input voltage from 2.5V~VOUT to the output voltage of 5V/8V/9V/12V(default to 12V) at a conversion efficiency over 80%.

With a compact size, it can be well integrated into devices. There are two pads with the letters A & B on the front side of the module, and users can use a soldering iron to change the pads connection to set voltage output. Besides, it has an on-board power indicator that visually shows the working status. This module can be widely used in battery boost, power supply modification, car driving, LED lighting, etc.



Voltage Output Selection

There are two pads with the letters A & B on the front side of the module, and users can use a soldering iron to connect/disconnect them to set voltage output. For the specific mode, please refer to the information on the back.



## FEATURES

- With a compact size
- On-board power indicator

## APPLICATIONS

- Battery boost
- Power supply modification
- Car driving

- *LED lighting*

## SPECIFICATION

- Input Voltage: DC 2.5V-VOUT. (The input voltage of the module should be less than the set output voltage)
- Output Voltage: DC 5V/8V/9V/12V (default to be 12V)
- Output Current:
  - 5V 1A, 8V 0.5A, 9V 0.45A and 12V 0.3A @3.7V input
  - 8V 0.7A, 9V 0.6A, 12V 0.5A @5V input

- *Conversion Efficiency:  $\geq 80\%$*

## SHIPPING LIST

- DC-DC Boost Power Supply Module x5