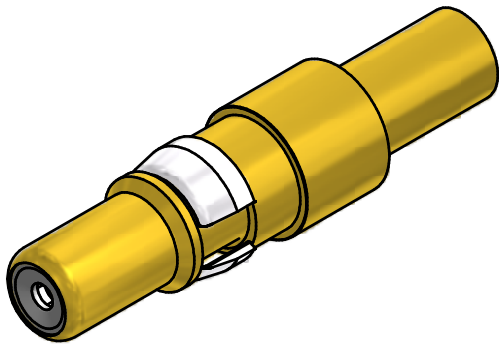
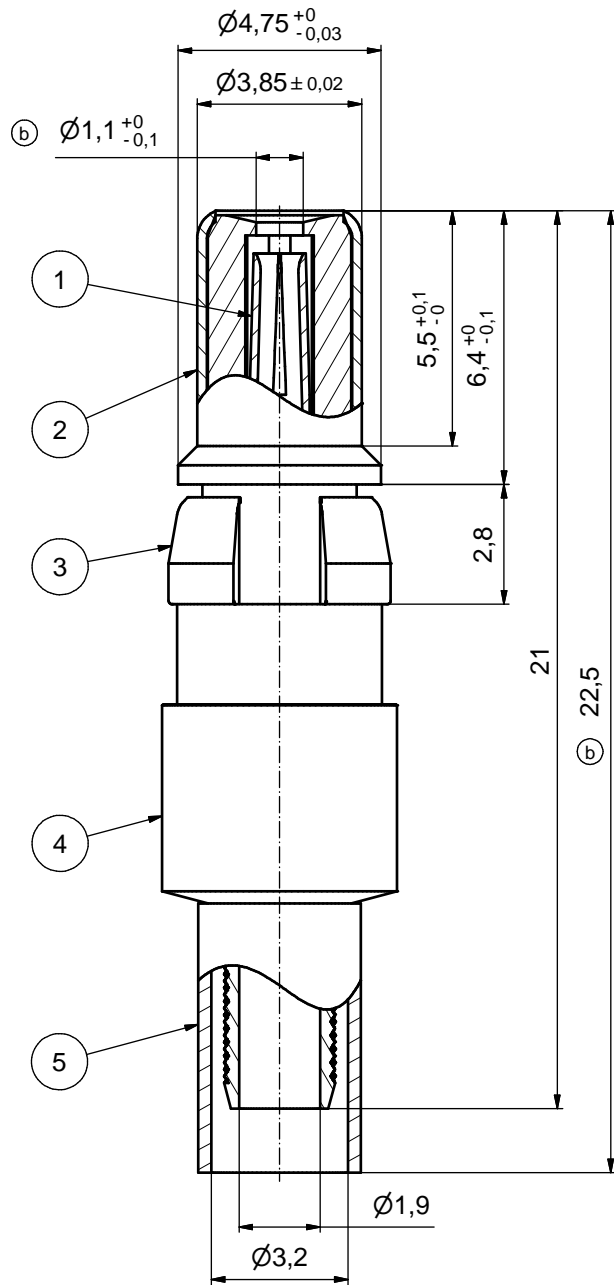
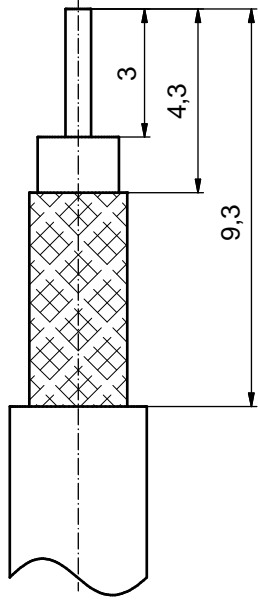


(b) STRIPPING DIMENSIONS



(b) ASSEMBLY TOOLING:

1. CENTER CONTACT:
USE CRIMP TOOL: 360X10329X
WITH TOOL INSERT: 360X11049X
SELECTOR SETTING: 5 (FOR AWG26 CENTER CONDUCTOR OF CABLE)
2. CRIMP FERRULE:
USE CRIMP TOOL: 360X10519X
WITH TOOL INSERT: 360X11019X
INSERT CAVITY B: HEX 3.25/.128

Part no.	Finish Pos.1	Finish Pos.2	Finish Pos.3	Finish Pos. 4/5
131J21019X	min. 50µin HARD GOLD over min. 50µin NICKEL	min. 30µin HARD GOLD over min. 50µin NICKEL	NICKEL PLATED	GOLD FLASH over NICKEL
131A21019X	GOLD FLASH over NICKEL	GOLD FLASH over NICKEL	NICKEL PLATED	GOLD FLASH over NICKEL

Directive 2002/95/EC RoHS compliant

THIS DRAWING MAY NOT BE COPIED OR REPRODUCED IN ANY WAY, AND MAY NOT BE PASSED ON TO A THIRD PARTY WITHOUT WRITTEN PERMISSION. OWNERSHIP AND COPYRIGHT OF CONEC GmbH				tolerance		dim. in mm		scale: 8:1	
				date		name		material: COPPER ALLOY (Pos.1 - 5) (b)	
6 x b		Ä 3774	12.10.10	HS	drawn 11.11.99 Mickenbecker		title: COAXIAL CONTACT PLUG 50 OHM		
a		Origin			appd. 16.11.99 Barcinski		inner + outer conductor for crimp termination for cable 174U, 188AU, 316U		
rev.		description	date	name	norm		dwg no: Inventor 10		DIN-A3
					d-old		13K2IV8A		sh: 1
				DO NOT ALTER CAD DRAWING BY HAND		CONEC®		part no: see table	