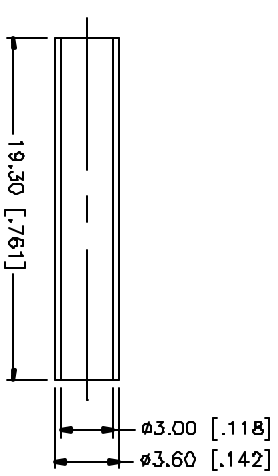
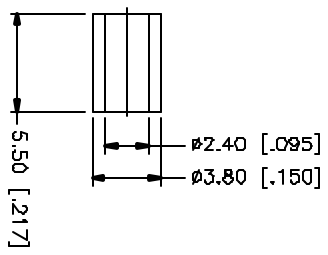
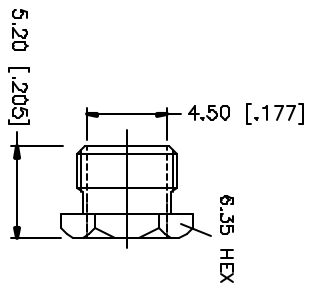
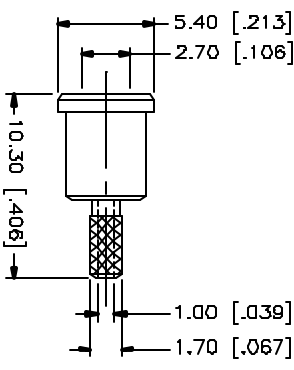
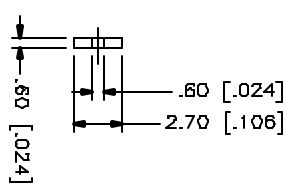
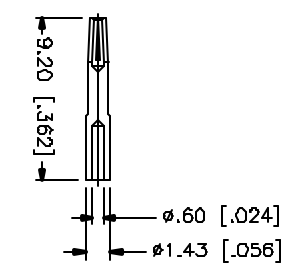
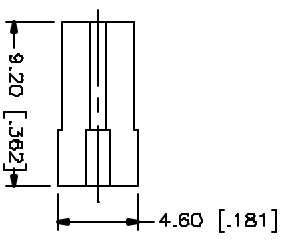
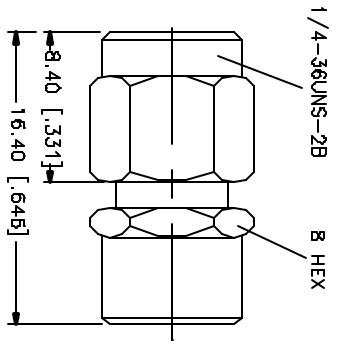
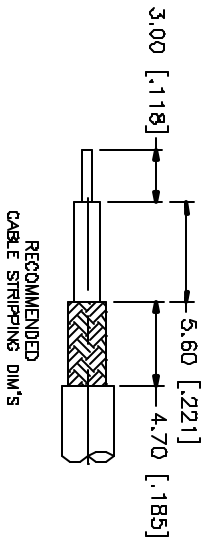


REV.	DATE	DESCRIPTION
NC	08/02/04	INITIAL RELEASE



NOTE:  
1. CRIMPED FERRULE  
HEX CRIMP SIZE .128"

QTY	FINISH	MATERIAL	DESCRIPTION
1	GOLD	COPPER	HEAT SHRINK TUBE
1	GOLD	BRASS	FERRULE
1	GOLD	BRASS	HEX NUT
1	GOLD	BRASS	BARREL
1	BQ1D	BER. COPPER	CONTACT PIN
1	NATURAL	TEFLON	INSULATOR
1	GOLD	BRASS	BODY

APPROVALS	DATE
DRAWN G.R.S.	08/02/04
CHECKED	
ASSEMBLED	
SHEET 1 OF 1	

QAD FILE	DWG. NO.	REV.	NC	SIZE	SCALE
C:/132/132193RP.DWG	132193RP.DWG			A	NA

PART DESCRIPTION	PART NO.
SMA REVERSE POLARITY CRIMP PLUG (FOR RG-178B/U, 196A/U)	132193RP

UNLESS OTHERWISE SPECIFIED, DIMENSIONS ARE IN MILLIMETERS, DECIMALS IN [ ] ARE IN INCHES AND PER QUANTITIES INDICATED ONLY.  
UNLESS OTHERWISE SPECIFIED, TOLERANCES FOR MILLIMETERS ARE:  
0.5 - .8mm ± 0.20mm  
.8 - 30mm ± 0.10mm  
30 - 120mm ± 0.30mm  
UNLESS OTHERWISE SPECIFIED, TOLERANCES FOR INCHES ARE:  
.020 - .315 ± 0.001"  
.315 - 1.180 ± 0.015"  
1.180 - 4.724 ± 0.020"  
DO NOT SCALE DRAWING

**Amphenol Connex**