

MOLEX P/N	DESCRIPTION	LENGTH	TOLERANCE	AWG	JACKET RATING
745464180	16X TO (2) 8X PCIe	0.5M	±0.025M	28	VW1
745464181	16X TO (2) 8X PCIe	1M	±0.025M	28	VW1
745464182	16X TO (2) 8X PCIe	2M	±0.025M	28	VW1
745464183	16X TO (2) 8X PCIe	3M	±0.025M	28	VW1

NOTES:

- MATERIAL -
BACKSHELLS - ZINC DIECAST
PULL - NYLON
CABLE JACKET - SEE TABLE
- LENGTH AND TOLERANCE - SEE TABLE
- ELECTRICAL PERFORMANCE PER PCI EXPRESS
EXTERNAL CABLING SPEC. REV 1.0
- X16 PLUG MATES TO RECEPTACLE - EMI GUIDE HOUSING
ASSY. 75581-0001 - X8 PLUG MATES TO RECEPTACLE
755860002 AND EMI HOUSING ASSY. 745400100
- THIS PRODUCT MEETS THE RESTRICTION OF HAZARDOUS
SUBSTANCES IN ELECTRICAL AND ELECTRONIC EQUIPMENT
(RoHS) DIRECTIVE (2002/95/EC)

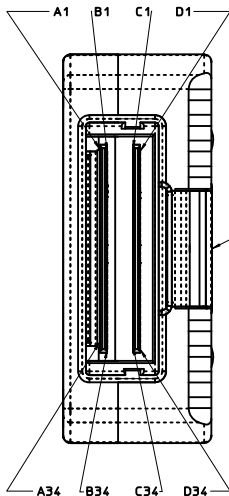
REVISED PINOUT EC NO: USY2011-0258 DRWN: JERWIN 2010/10/12 CHKD: KWEBER 2010/10/14 APPR: DDOYE 2010/10/18	QUALITY SYMBOLS 	GENERAL TOLERANCES (UNLESS SPECIFIED)		DIMENSION STYLE MM ONLY	SCALE 1:1	DESIGN UNITS METRIC	THIRD ANGLE PROJECTION
		4 PLACES ± --- ± --- 3 PLACES ± --- ± --- 2 PLACES ± 0.13 ± --- 1 PLACE ± 0.25 ± --- ANGULAR ± 1/2°	mm INCH ± --- ± --- ± --- ± --- ± --- ± --- ± --- ± ---	DRAWN BY JERWIN	DATE 2009/07/08	CHECKED BY KWEBER	DATE 2009/07/08
DRAFT WHERE APPLICABLE MUST REMAIN WITHIN DIMENSIONS		MATERIAL NO. SEE TABLE		DOCUMENT NO. SD-74546-4180		SHEET NO. 1 OF 3	
THIS DRAWING CONTAINS INFORMATION THAT IS PROPRIETARY TO MOLEX INCORPORATED AND SHOULD NOT BE USED WITHOUT WRITTEN PERMISSION							

iPass™ is a trademark of Molex

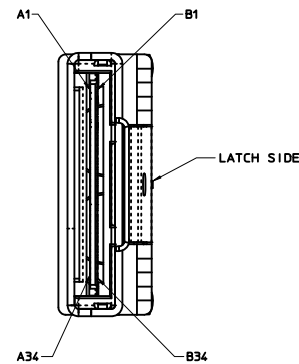
**I-PASS
X16 TO (2)X8 SPLITTER
CABLE ASSEMBLY**

MOLEX INCORPORATED

X16		X8		X16		X8	
P3	PIN	PIN	P1	P3	PIN	PIN	P2
SIGNAL	B01	A01	GND	SIGNAL	D01	A01	GND
PERp0	B02	A02	PETp0	PERp8	D02	A02	PETp8
PERn0	B03	A03	PETn0	PERn8	D03	A03	PETn8
GND	B04	A04	GND	GND	D04	A04	GND
PERp1	B05	A05	PETp1	PERp9	D05	A05	PETp9
PERn1	B06	A06	PETn1	PERn9	D06	A06	PETn9
GND	B07	A07	GND	GND	D07	A07	GND
PERp2	B08	A08	PETp2	PERp10	D08	A08	PETp10
PERn2	B09	A09	PETn2	PERn10	D09	A09	PETn10
GND	B10	A10	GND	GND	D10	A10	GND
PERp3	B11	A11	PETp3	PERp11	D11	A11	PETp11
PERn3	B12	A12	PETn3	PERn11	D12	A12	PETn11
GND	B13	A13	GND	GND	D13	A13	GND
uREFCLKp	A19	A14	uREFCLKp	dREFCLKp	C19	A14	dREFCLKp
uREFCLKn	A20	A15	uREFCLKn	dREFCLKn	C20	A15	dREFCLKn
NC	B14	A16	GND	GND	C18	A16	GND
NC	B34	A17	NC	NC	D14	A17	NC
NC	B34	A18	NC	NC	D34	A18	NC
uSB_RTN	A17	A19	uSB_RTN	dSB_RTN	C17	A19	dSB_RTN
uCPRSNT#	B19	A20	uCPRSNT#	dCPRSNT#	D19	A20	dCPRSNT#
uCPWRON	B17	A21	uCPWRON	dCPWRON	D17	A21	dCPWRON
GND	B21	A22	GND	GND	D21	A22	GND
PERp4	B22	A23	PETp4	PERp12	D22	A23	PETp12
PERn4	B23	A24	PETn4	PERn12	D23	A24	PETn12
GND	B24	A25	GND	GND	D24	A25	GND
PERp5	B25	A26	PETp5	PERp13	D25	A26	PETp13
PERn5	B26	A27	PETn5	PERn13	D26	A27	PETn13
GND	B27	A28	GND	GND	D27	A28	GND
PERp6	B28	A29	PETp6	PERp14	D28	A29	PETp14
PERn6	B29	A30	PETn6	PERn14	D29	A30	PETn14
GND	B30	A31	GND	GND	D30	A31	GND
PERp7	B31	A32	PETp7	PERp15	D31	A32	PETp15
PERn7	B32	A33	PETn7	PERn15	D32	A33	PETn15
GND	B33	A34	GND	GND	D33	A34	GND
uCWAKE#	B18	B20	uCWAKE#	dCWAKE#	D18	B20	dCWAKE#
uCPERST#	B20	B21	uCPERST#	dCPERST#	D20	B21	dCPERST#
GND	A01	B01	GND	GND	C01	B01	GND
PETp0	A02	B02	PERp0	PETp8	C02	B02	PERp0
PETn0	A03	B03	PERn0	PETn8	C03	B03	PERn0
GND	A04	B04	GND	GND	C04	B04	GND
PETp1	A05	B05	PERp1	PETp9	C05	B05	PERp9
PETn1	A06	B06	PERn1	PETn9	C06	B06	PERn9
GND	A07	B07	GND	GND	C07	B07	GND
PETp2	A08	B08	PERp2	PETp10	C08	B08	PERp10
PETn2	A09	B09	PERn2	PETn10	C09	B09	PERn10
GND	A10	B10	GND	GND	C10	B10	GND
PETp3	A11	B11	PERp3	PETp11	C11	B11	PERp11
PETn3	A12	B12	PERn3	PETn11	C12	B12	PERn11
GND	A13	B13	GND	GND	C13	B13	GND
NC	A14	B14	NC	NC	C14	B14	NC
NC	A15	B15	NC	NC	C15	B15	NC
NC	A16	B16	NC	NC	C16	B16	NC
NC	A15	B17	NC	NC	C15	B17	NC
NC	B16	B18	NC	NC	C16	B18	NC
NC	A34	B19	NC	NC	C34	B19	NC
GND	A21	B22	GND	GND	C21	B22	GND
PETp4	A22	B23	PERp4	PETp12	C22	B23	PERp12
PETn4	A23	B24	PERn4	PETn12	C23	B24	PERn12
GND	A24	B25	GND	GND	C24	B25	GND
PETp5	A25	B26	PERp5	PETp13	C25	B26	PERp13
PETn5	A26	B27	PERn5	PETn13	C26	B27	PERn13
GND	A27	B28	GND	GND	C27	B28	GND
PETp6	A28	B29	PERp6	PETp14	C28	B29	PERp14
PETn6	A29	B30	PERn6	PETn14	C29	B30	PERn14
GND	A30	B31	GND	GND	C30	B31	GND
PETp7	A31	B32	PERp7	PETp15	C31	B32	PERp15
PETn7	A32	B33	PERn7	PETn15	C32	B33	PERn15
GND	A33	B34	GND	GND	C33	B34	GND



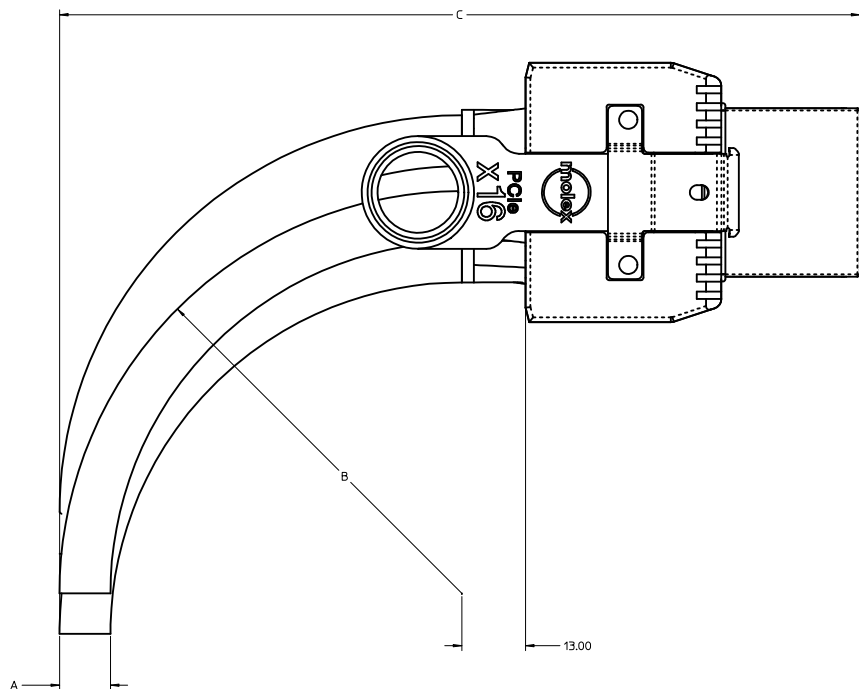
LATCH SIDE



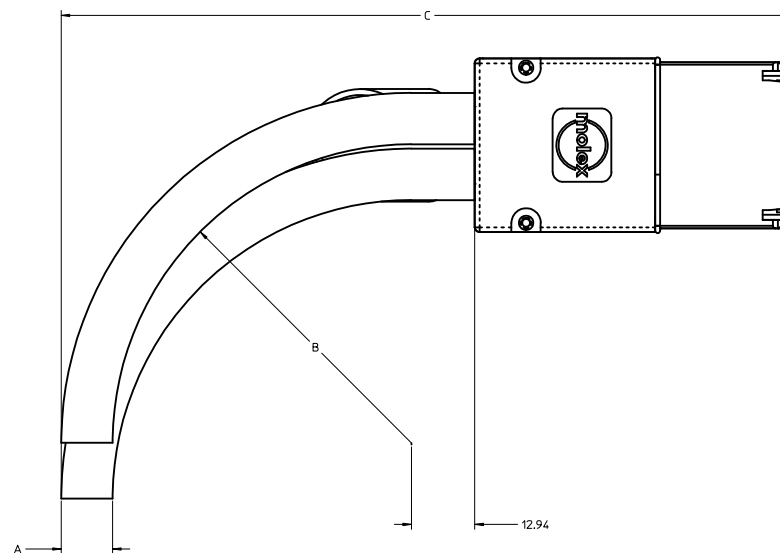
LATCH SIDE

IPASS™ IS A TRADEMARK OF MOLEX

REVISED PINOUT IEC NO.: USY2011-0258 DRAWN BY: JERWIN CHECKED BY: KWEBER APPROVED BY: DDOYDE DATE: 2010/10/18	QUALITY SYMBOLS ▽=0 ▽=0	GENERAL TOLERANCES (UNLESS SPECIFIED)		DIMENSION STYLE MM ONLY	SCALE 3:1	DESIGN UNITS METRIC	THIRD ANGLE PROJECTION	
		4 PLACES ±0.13 mm ±0.005 INCH 3 PLACES ±0.25 mm ±0.010 INCH 2 PLACES ±0.50 mm ±0.020 INCH 1 PLACE ±1.27 mm ±0.050 INCH	DRAWN BY: JERWIN DATE: 2009/07/08		TITLE I-PASS X16 TO (2)X8 SPLITTER CABLE ASSEMBLY			
		DRAFT WHERE APPLICABLE MUST REMAIN WITHIN DIMENSIONS		APPROVED BY: DDOYDE DATE: 2010/10/18		MOLEX INCORPORATED		
		MATERIAL NO. SEE TABLE		DOCUMENT NO. SD-74546-4180		SHEET NO. 2 OF 3		

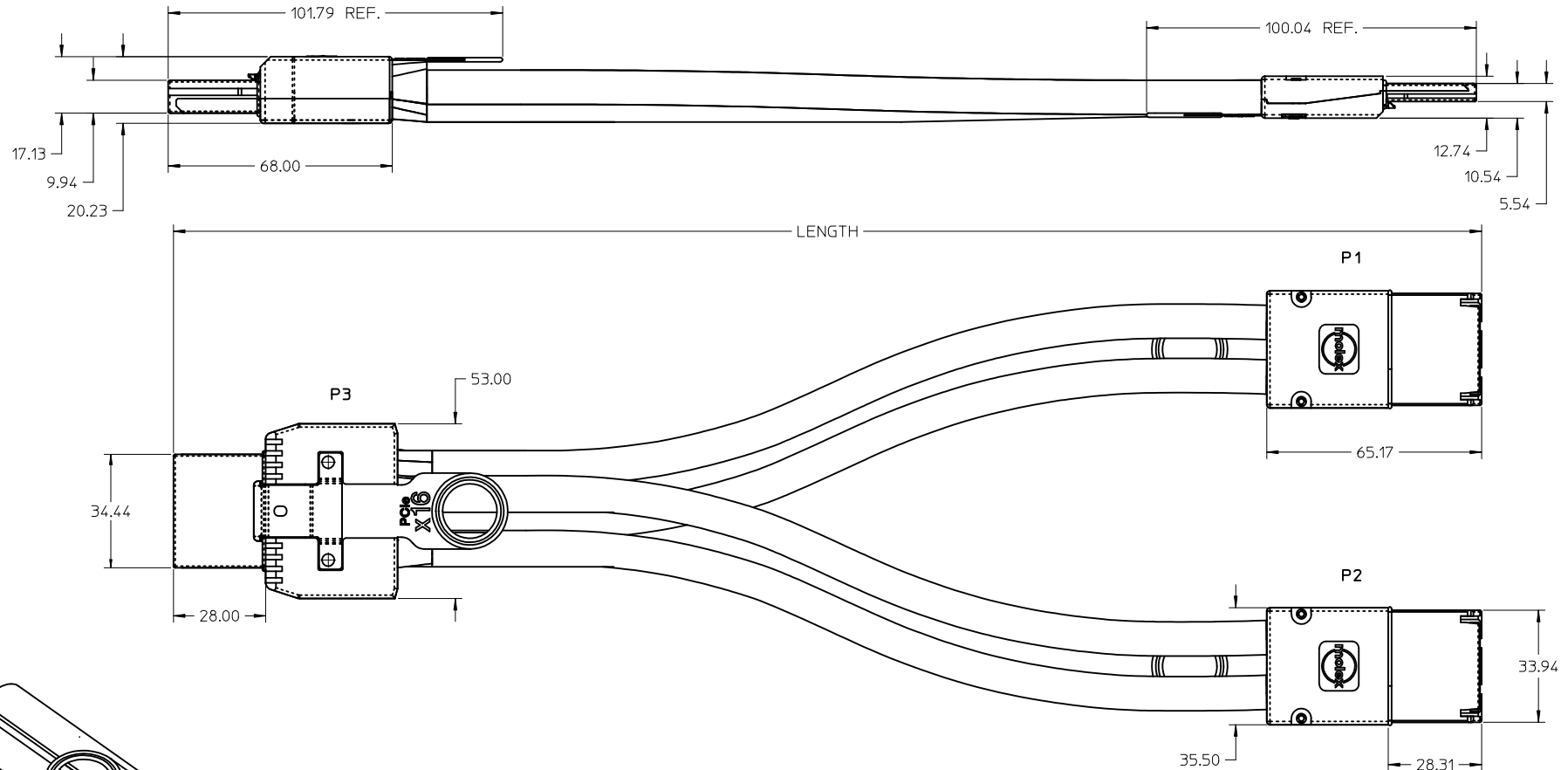


CABLE GAGE		28
A. CABLE DIAMETER		8.4
B. MINIMUM OUTER RADIUS		37.7
C. FACEPLATE TO OUTER RADIUS		93.0



CABLE GAGE		28
A. CABLE DIAMETER		8.4
B. MINIMUM OUTER RADIUS		37.7
C. FACEPLATE TO OUTER RADIUS		93.0

REVISED PINOUT IEC NO. USY2011-02258 DRAWN BY: JERWIN 2010/10/12 CHECKED BY: CHYD KWEBER 2010/10/14 APPROVED BY: DDOYE 2010/10/18	QUALITY SYMBOLS ▽=0 ▽=0	GENERAL TOLERANCES (UNLESS SPECIFIED)		DIMENSION STYLE MM ONLY	SCALE 2:1	DESIGN UNITS METRIC	THIRD ANGLE PROJECTION		
		4 PLACES ±0.13 ±0.005 3 PLACES ±0.13 ±0.005 2 PLACES ±0.25 ±0.010 1 PLACE ±0.25 ±0.010	mm INCH	DRAWN BY JERWIN	DATE 2009/07/08	TITLE I-PASS X16 TO (2)X8 SPLITTER CABLE ASSEMBLY			
		DRAFT WHERE APPLICABLE MUST REMAIN WITHIN DIMENSIONS		APPROVED BY DDOYE	DATE 2010/10/18	MOLEX INCORPORATED			
				MATERIAL NO. SEE TABLE	DOCUMENT NO. SD-74546-4180	SHEET NO. 3 OF 3			



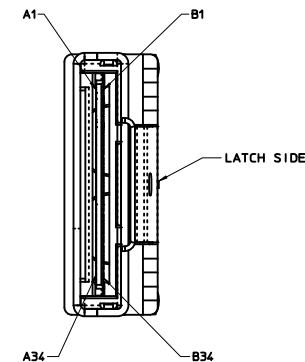
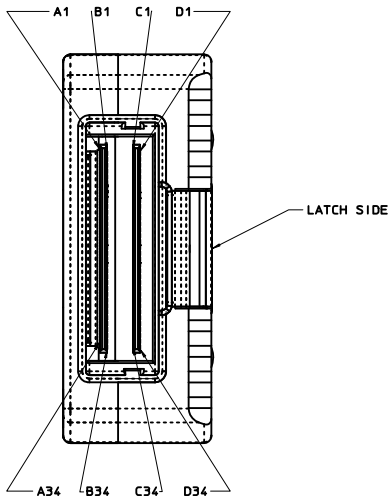
MOLEX P/N	DESCRIPTION	LENGTH	TOLERANCE	AWG	JACKET RATING
745464180	16X TO (2) 8X PCIe	0.5M	±0.025M	28	VW1
745464181	16X TO (2) 8X PCIe	1M	±0.025M	28	VW1
745464182	16X TO (2) 8X PCIe	2M	±0.025M	28	VW1
745464183	16X TO (2) 8X PCIe	3M	±0.025M	28	VW1

- NOTES:
- MATERIAL -
BACKSHELLS - ZINC DIECAST
PULL - NYLON
CABLE JACKET - SEE TABLE
 - LENGTH AND TOLERANCE - SEE TABLE
 - ELECTRICAL PERFORMANCE PER PCI EXPRESS
EXTERNAL CABLING SPEC. REV 1.0
 - X16 PLUG MATES TO RECEPTACLE - EMI GUIDE HOUSING
ASSY. 75581-0001 - X8 PLUG MATES TO RECEPTACLE
755860002 AND EMI HOUSING ASSY. 745400100
 - THIS PRODUCT MEETS THE RESTRICTION OF HAZARDOUS
SUBSTANCES IN ELECTRICAL AND ELECTRONIC EQUIPMENT
(RoHS) DIRECTIVE (2002/95/EC)

REVISED PINOUT EC NO: USY2011-0258 DRWN: JERWIN 2010/10/12 CHKD: KWEBER 2010/10/14 APPR: DDOYE 2010/10/18	QUALITY SYMBOLS ▽=0 ▽=0	GENERAL TOLERANCES (UNLESS SPECIFIED)		DIMENSION STYLE MM ONLY		SCALE 1:1	DESIGN UNITS METRIC	THIRD ANGLE PROJECTION	
		mm	INCH	DRAWN BY JERWIN	DATE 2009/07/08	TITLE I-PASS X16 TO (2)X8 SPLITTER CABLE ASSEMBLY	MOLEX INCORPORATED		
REV	DESCRIPTION	4 PLACES ± --- ± ---	CHECKED BY KWEBER	DATE 2009/07/08	MATERIAL NO. SEE TABLE				
		3 PLACES ± --- ± ---	APPROVED BY DDOYE	DATE 2010/10/18					
DRAFT WHERE APPLICABLE MUST REMAIN WITHIN DIMENSIONS		ANGULAR ±1/2°		THIS DRAWING CONTAINS INFORMATION THAT IS PROPRIETARY TO MOLEX INCORPORATED AND SHOULD NOT BE USED WITHOUT WRITTEN PERMISSION					

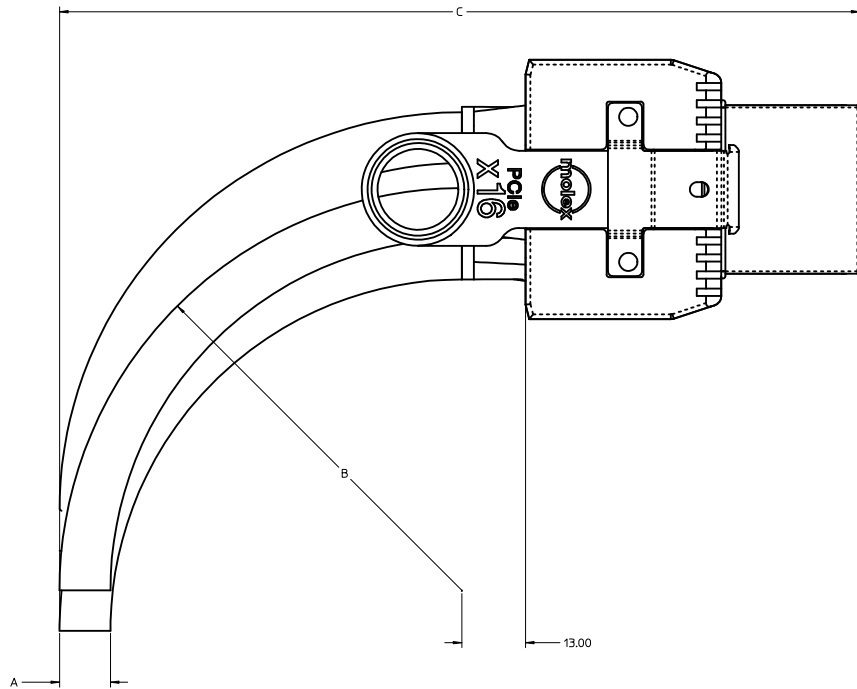
iPass™ is a trademark of Molex

X16		X8		X16		X8	
P3	PIN	PIN	P1	P3	PIN	PIN	P2
SIGNAL	B01	A01	GND	SIGNAL	D01	A01	GND
PERp0	B02	A02	PETp0	PERp8	D02	A02	PETp8
PERn0	B03	A03	PETn0	PERn8	D03	A03	PETn8
GND	B04	A04	GND	GND	D04	A04	GND
PERp1	B05	A05	PETp1	PERp9	D05	A05	PETp9
PERn1	B06	A06	PETn1	PERn9	D06	A06	PETn9
GND	B07	A07	GND	GND	D07	A07	GND
PERp2	B08	A08	PETp2	PERp10	D08	A08	PETp10
PERn2	B09	A09	PETn2	PERn10	D09	A09	PETn10
GND	B10	A10	GND	GND	D10	A10	GND
PERp3	B11	A11	PETp3	PERp11	D11	A11	PETp11
PERn3	B12	A12	PETn3	PERn11	D12	A12	PETn11
GND	B13	A13	GND	GND	D13	A13	GND
uREFCLKp	A19	A14	uREFCLKp	dREFCLKp	C19	A14	dREFCLKp
uREFCLKn	A20	A15	uREFCLKn	dREFCLKn	C20	A15	dREFCLKn
NC	B14	A16	GND	GND	C18	A16	GND
NC	B34	A17	NC	NC	D14	A17	NC
NC	B34	A18	NC	NC	D34	A18	NC
uSB_RTn	A17	A19	uSB_RTn	dSB_RTn	C17	A19	dSB_RTn
uCPRSNT#	B19	A20	uCPRSNT#	dCPRSNT#	D19	A20	dCPRSNT#
uCPWRON	B17	A21	uCPWRON	dCPWRON	D17	A21	dCPWRON
GND	B21	A22	GND	GND	D21	A22	GND
PERp4	B22	A23	PETp4	PERp12	D22	A23	PETp12
PERn4	B23	A24	PETn4	PERn12	D23	A24	PETn12
GND	B24	A25	GND	GND	D24	A25	GND
PERp5	B25	A26	PETp5	PERp13	D25	A26	PETp13
PERn5	B26	A27	PETn5	PERn13	D26	A27	PETn13
GND	B27	A28	GND	GND	D27	A28	GND
PERp6	B28	A29	PETp6	PERp14	D28	A29	PETp14
PERn6	B29	A30	PETn6	PERn14	D29	A30	PETn14
GND	B30	A31	GND	GND	D30	A31	GND
PERp7	B31	A32	PETp7	PERp15	D31	A32	PETp15
PERn7	B32	A33	PETn7	PERn15	D32	A33	PETn15
GND	B33	A34	GND	GND	D33	A34	GND
uCWAKE#	B18	B20	uCWAKE#	dCWAKE#	D18	B20	dCWAKE#
uCPERST#	B20	B21	uCPERST#	dCPERST#	D20	B21	dCPERST#
GND	A01	B01	GND	GND	C01	B01	GND
PETp0	A02	B02	PERp0	PETp8	C02	B02	PERp0
PETn0	A03	B03	PERn0	PETn8	C03	B03	PERn0
GND	A04	B04	GND	GND	C04	B04	GND
PETp1	A05	B05	PERp1	PETp9	C05	B05	PERp9
PETn1	A06	B06	PERn1	PETn9	C06	B06	PERn9
GND	A07	B07	GND	GND	C07	B07	GND
PETp2	A08	B08	PERp2	PETp10	C08	B08	PERp10
PETn2	A09	B09	PERn2	PETn10	C09	B09	PERn10
GND	A10	B10	GND	GND	C10	B10	GND
PETp3	A11	B11	PERp3	PETp11	C11	B11	PERp11
PETn3	A12	B12	PERn3	PETn11	C12	B12	PERn11
GND	A13	B13	GND	GND	C13	B13	GND
NC	A14	NC	B14	NC	C14	NC	B14
NC	A15	NC	B15	NC	C15	NC	B15
NC	A16	NC	B16	NC	C16	NC	B16
NC	A15	NC	B17	NC	C15	NC	B17
NC	B16	NC	B18	NC	C16	NC	B18
NC	A34	NC	B19	NC	C34	NC	B19
GND	A21	B22	GND	GND	C21	B22	GND
PETp4	A22	B23	PERp4	PETp12	C22	B23	PERp12
PETn4	A23	B24	PERn4	PETn12	C23	B24	PERn12
GND	A24	B25	GND	GND	C24	B25	GND
PETp5	A25	B26	PERp5	PETp13	C25	B26	PERp13
PETn5	A26	B27	PERn5	PETn13	C26	B27	PERn13
GND	A27	B28	GND	GND	C27	B28	GND
PETp6	A28	B29	PERp6	PETp14	C28	B29	PERp14
PETn6	A29	B30	PERn6	PETn14	C29	B30	PERn14
GND	A30	B31	GND	GND	C30	B31	GND
PETp7	A31	B32	PERp7	PETp15	C31	B32	PERp15
PETn7	A32	B33	PERn7	PETn15	C32	B33	PERn15
GND	A33	B34	GND	GND	C33	B34	GND

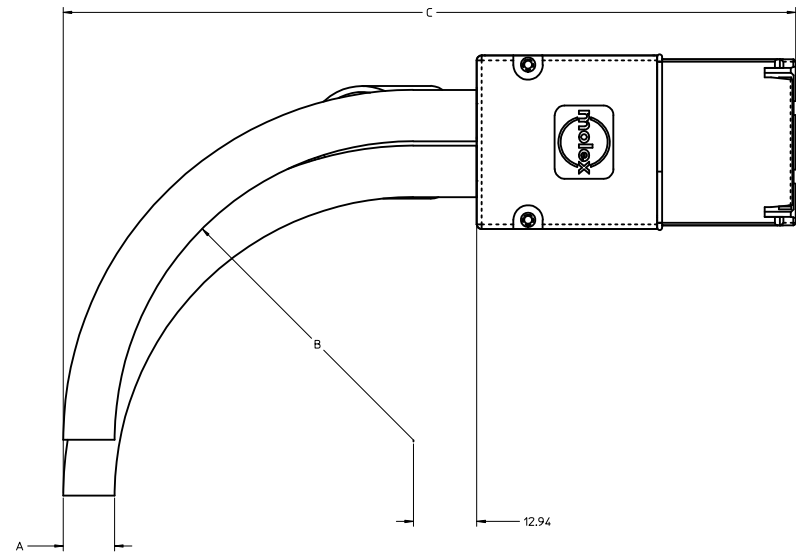


IPASS™ IS A TRADEMARK OF MOLEX

REVISED PINOUT IEC NO.: USY2011-0258 DRAWN BY: JERWIN CHECKED BY: KWEBER APPROVED BY: DDOYDE DATE: 2010/10/18	QUALITY SYMBOLS ▽=0 ▽=0	GENERAL TOLERANCES (UNLESS SPECIFIED)		DIMENSION STYLE MM ONLY	SCALE 3:1	DESIGN UNITS METRIC	THIRD ANGLE PROJECTION
		4 PLACES ±0.13 mm INCH 3 PLACES ±0.13 mm INCH 2 PLACES ±0.13 mm INCH 1 PLACE ±0.25 mm INCH	DRAWN BY: JERWIN CHECKED BY: KWEBER APPROVED BY: DDOYDE DATE: 2009/07/08 DATE: 2009/07/08 DATE: 2010/10/18	TITLE I-PASS X16 TO (2)X8 SPLITTER CABLE ASSEMBLY			
		MATERIAL NO. SEE TABLE DOCUMENT NO. SD-74546-4180			MOLEX INCORPORATED		SHEET NO. 2 OF 3
		DRAFT WHERE APPLICABLE MUST REMAIN WITHIN DIMENSIONS					



CABLE GAGE		28
A. CABLE DIAMETER		8.4
B. MINIMUM OUTER RADIUS		37.7
C. FACEPLATE TO OUTER RADIUS		93.0



CABLE GAGE		28
A. CABLE DIAMETER		8.4
B. MINIMUM OUTER RADIUS		37.7
C. FACEPLATE TO OUTER RADIUS		93.0

REVISED PINOUT IEC NO. USY2011-02258 DRAWN BY: JERWIN 2010/10/12 CHECKED BY: CHYD KWEBER 2010/10/14 APPROVED BY: DDOYE 2010/10/18 APPR:DDOYE	QUALITY SYMBOLS ▽=0 ▽=0	GENERAL TOLERANCES (UNLESS SPECIFIED)		DIMENSION STYLE MM ONLY	SCALE 2:1	DESIGN UNITS METRIC	THIRD ANGLE PROJECTION
		4 PLACES ±0.13 ±0.005 3 PLACES ±0.25 ±0.010 2 PLACES ±0.50 ±0.020 1 PLACE ±1.00 ±0.040	mm INCH	DRAWN BY: JERWIN DATE: 2009/07/08	TITLE: I-PASS X16 TO (2)X8 SPLITTER CABLE ASSEMBLY		
		ANGULAR ±1/2°	APPROVED BY: DDOYE DATE: 2010/10/18	MATERIAL NO. SEE TABLE	MOLEX INCORPORATED		
		DRAFT WHERE APPLICABLE MUST REMAIN WITHIN DIMENSIONS	SIZE D	DOCUMENT NO. SD-74546-4180	SHEET NO. 3 OF 3		