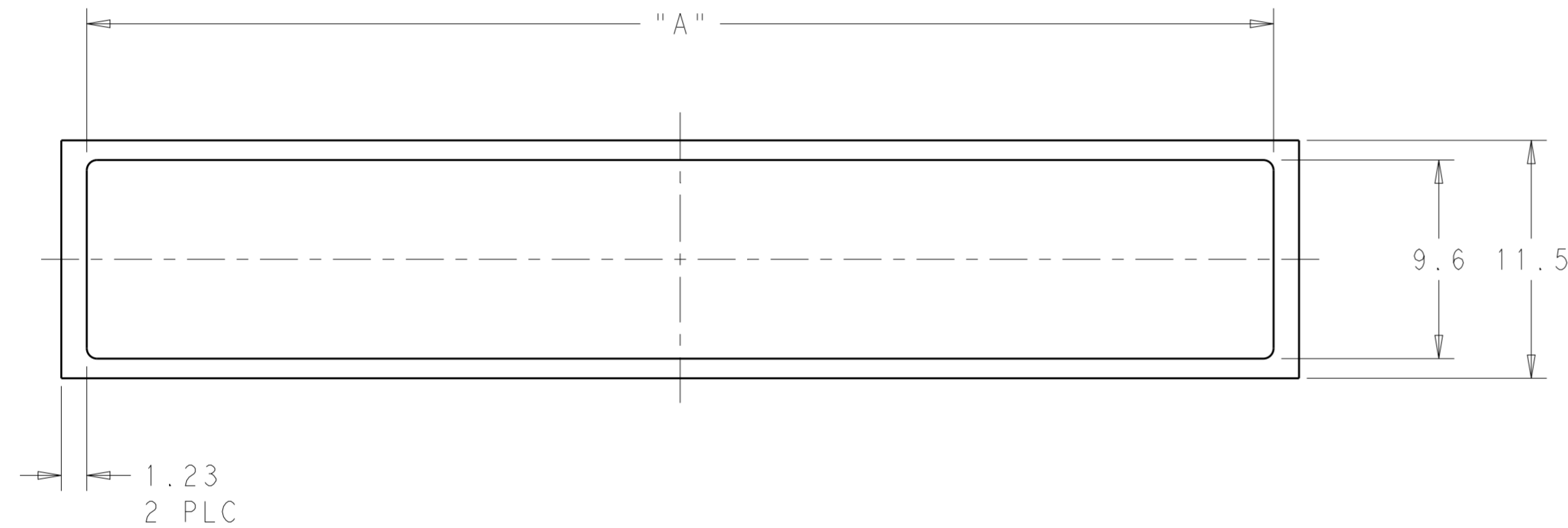


THIS DRAWING IS UNPUBLISHED. RELEASED FOR PUBLICATION 20
 © COPYRIGHT 20 BY -TE ALL RIGHTS RESERVED.

LOC	DIST	REVISIONS					
GP	00	P	LTR	DESCRIPTION	DATE	DWN	APVD
		1		PRELIMINARY	17JAN2012	KS	AC
		2		PRELIMINARY	30MAY2012	RZ	AC
		3		PRELIMINARY	25JUN2013	ZJ	AC

△1 MATERIAL: NICKEL/COPPER CONDUCTIVE FOAM WITH CONDUCTIVE ADHESIVE BACKING



DESIGN APPROVED THIS PRINT IS
PRELIMINARY
 TO FIRST PIECE APPROVAL
 CONTACT PRODUCT ENGINEERING
 BEFORE USING THIS PRINT

38.35	1X2	2170249-4
19.35	1X1	2170249-3
76.35	1X4	2170249-2
57.35	1X3	2170249-1
DIM A	APPLICATION	PART NUMBER

DIMENSIONS:		TOLERANCES UNLESS OTHERWISE SPECIFIED:		APVD		NAME	
mm		0 PLC	±0.76	DWN	KINSEN SUN	17JAN2012	17JAN2012
		1 PLC	±0.76	CHK	DENNY ZHU	17JAN2012	17JAN2012
		2 PLC	±0.76	APVD	ALEX CAI	17JAN2012	17JAN2012
		3 PLC	±0.51	PRODUCT SPEC			
		4 PLC	±	APPLICATION SPEC			
		ANGLES	±0.5°	WEIGHT			
		FINISH					
MATERIAL	△1						

SIZE	CAGE CODE	DRAWING NO	RESTRICTED TO
A2	00779	C-2170249	-

CUSTOMER DRAWING	SCALE	SHEET	OF	REV
	4:1	1	1	3