

1 2 3 4 5 6 7 8

F

F

E

E

D

D

C

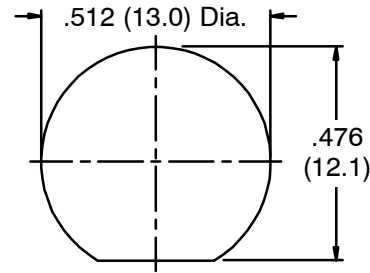
C

B

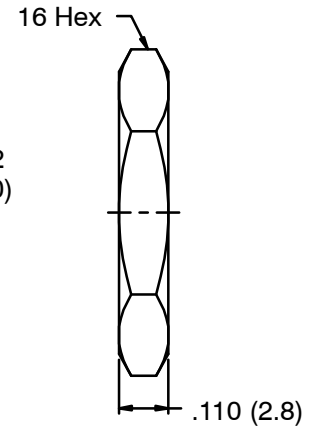
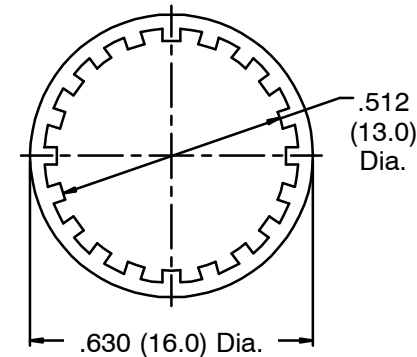
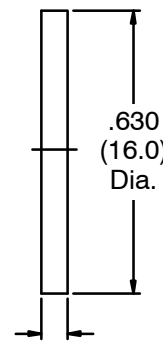
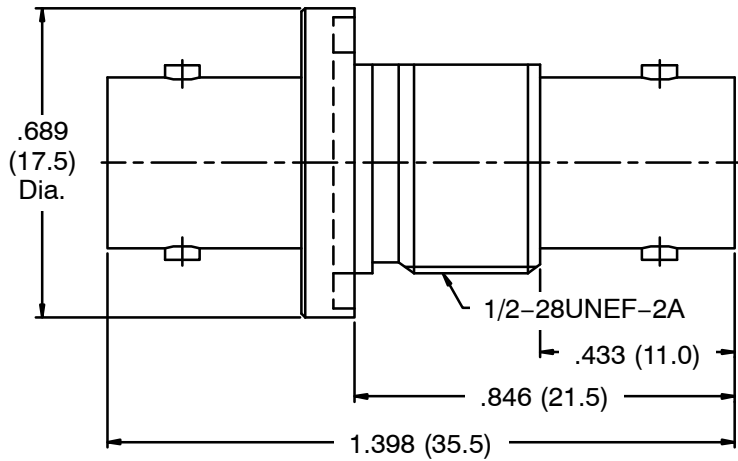
B

A

A



Recommended Mounting Hole



NOTES: Finish (Plating Thickness in Micro-inches)

- 1. Brass
- 2. Nickel Pl. 100 Min. Thick over Copper Pl. 50 Min. Thick
- 3. Phosphor Bronze
- 4. Gold Pl. 3 Min Thick over Nickel Pl. 50 Min. Thick over Copper Pl. 50 Min. Thick
- 4. DELRIN

RoHS Compliant

					Dimensions are in Inches		Part No.		NTE Electronics	
					Unless Otherwise Specified Tolerances		Approved			
					0.5-6 = ±0.2		Date		12-4-2018	
					6-30 = ±0.4		Checked		Date	
					30-120 = ±0.6		Date		12-4-2018	
					120-315 = ±1		Drawn		Date	
					315-1000 = ±1.6		Date		12-4-2018	
					1000-2000 = ±2.4				Drawing No. 06-B005	
									File No.	

No	Description	Material	Finish	Q'ty	Drawing No.	Scale	2.5/1	Issue	A
7	Hex-Nut	Note 1	Note 2	1					
6	Lock Washer	Note 1	Note 2	1					
5	Gasket	Rubber	Red	1					
4	Contact Pin	Note 3	Note 4	1					
3	Insulator	Note 5	Natural	2					
2	Body	Note 1	Note 2	1					
1	Housing	Note 1	Note 2	1					

1 2 3 4 5 6 7 8