

THIS DRAWING IS UNPUBLISHED. RELEASED FOR PUBLICATION 2007  
 © COPYRIGHT 2007 BY TYCO ELECTRONICS CORPORATION. ALL RIGHTS RESERVED.

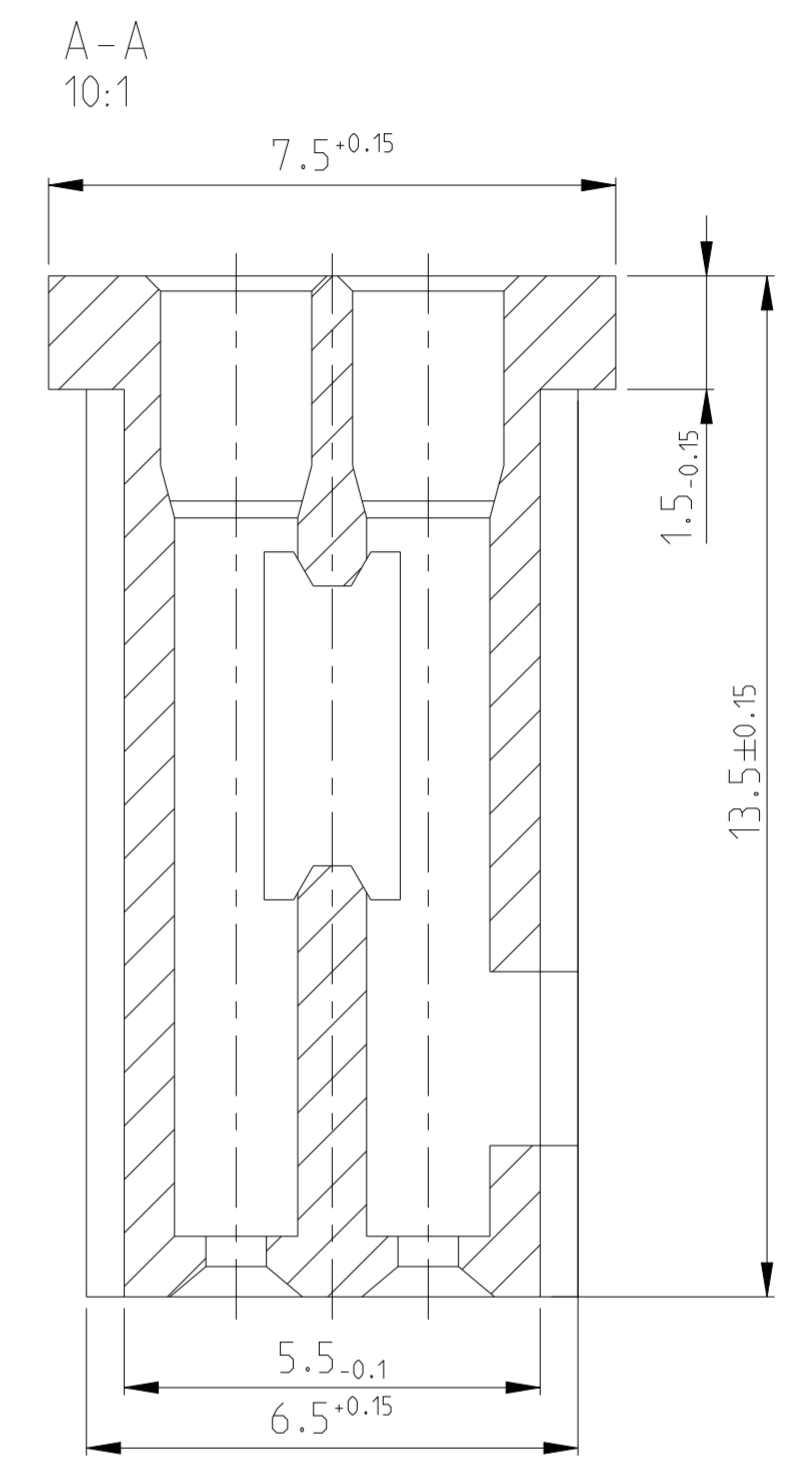
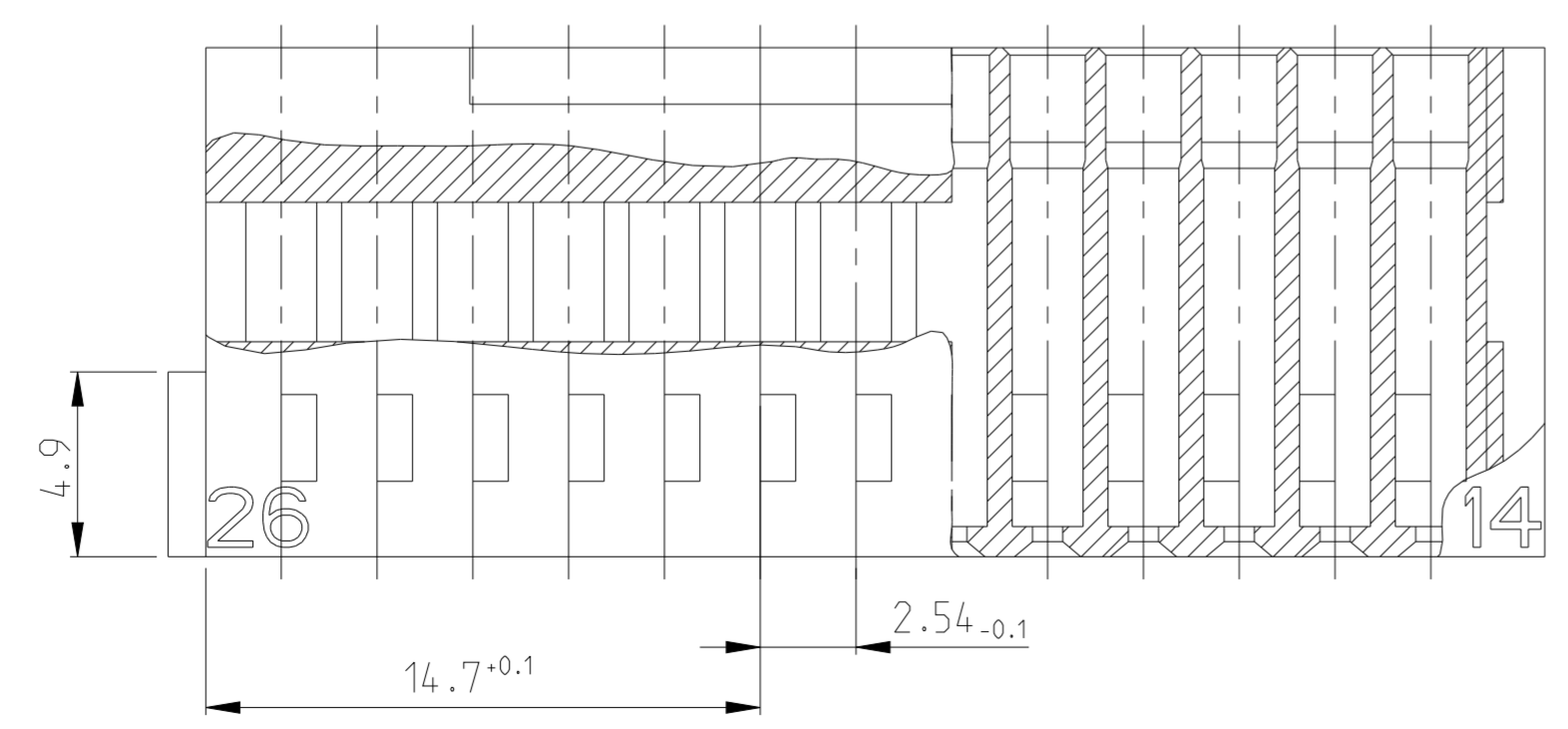
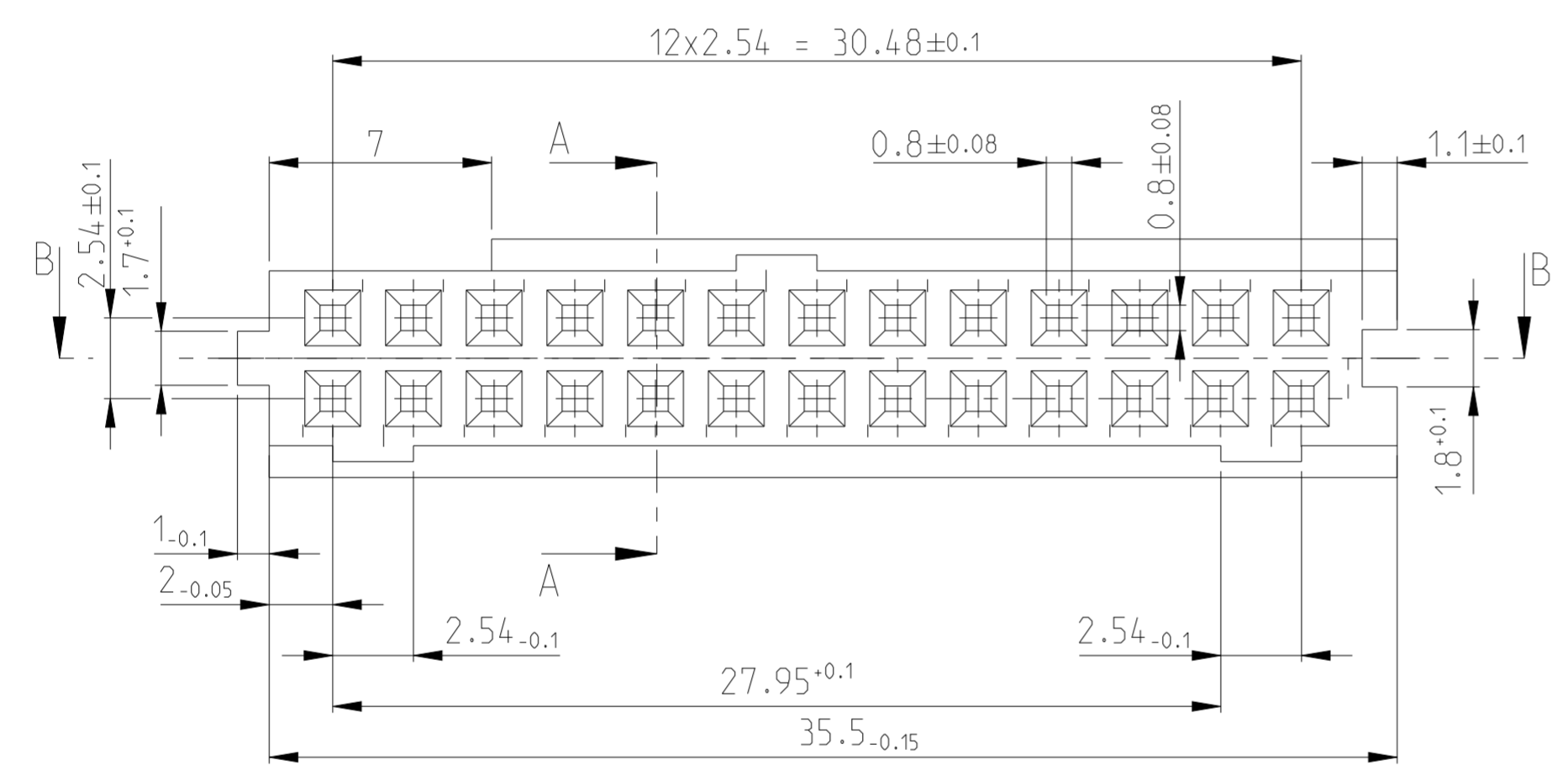
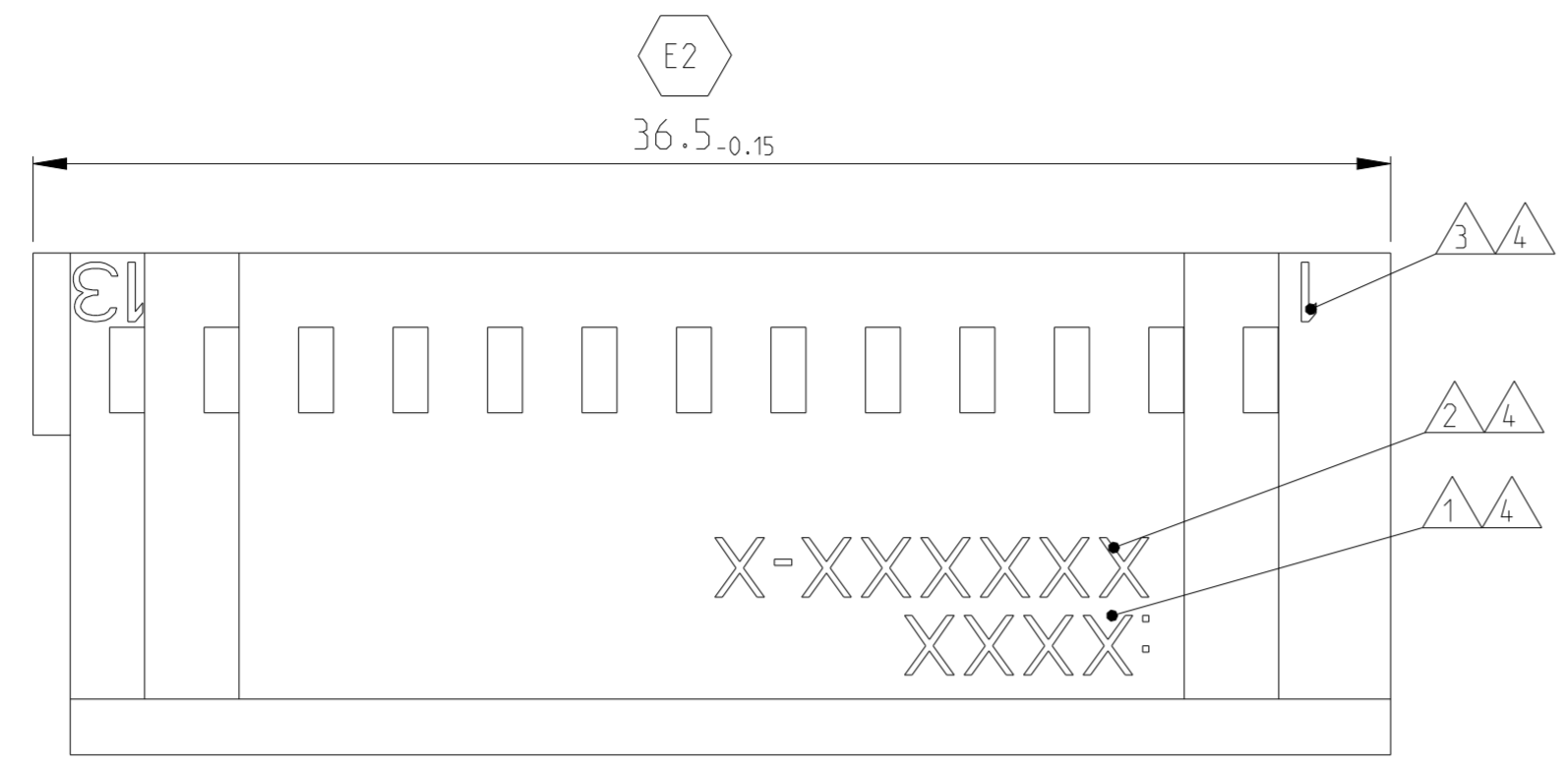
LOC		DIST		REVISIONS			
P	LTR	DESCRIPTION		DATE	DWN	APVD	
A1	-	D	Maß 4.9 war 5.2	18.09.86	Weitzel		
		E	Zeichnung neu erstellt	16.09.93	Liebing		
		E1	NEW DRAWING CREATED	08.09.07	Haas	Stre.	
		E2	DRAFTING ERROR. TOLERANCE VALUE CORRECTED	01JUN2023	JUS	-	

D

C

B

A



Bemerkungen  
NOTES

- ① Laenderkennung und FirmenLogo  
LOCATION CODE AND ARTWORK LOGO
- ② Tyco Electronics Teilenummer  
TYCO ELECTRONICS PART NUMBER
- ③ Kontaktkammer Markierung  
CONTACT CAVITY NUMBER
- ④ Mittelschrift 1.6 DIN 1451, vertieft/erhaben  
CHARACTERS 1.6 ACC.TO DIN 1451, SUNK/RAISED

927 690-1 wie gezeichnet; Teilerevision: E  
AS SHOWN; PART REVISION: E

THIS DRAWING IS A CONTROLLED DOCUMENT FOR TYCO ELECTRONICS CORPORATION IT IS SUBJECT TO CHANGE AND THE CONTROLLING ENGINEERING ORGANIZATION SHOULD BE CONTACTED FOR THE LATEST REVISION.		DWN Liebing.R.	Sep93	Tyco Electronics Tyco Electronics AMP GmbH 64625 Bensheim (Germany)	
DIMENSIONS: mm		CHK -	APVD -	NAME 2x13 POS. MODU IV HOUSING DOUBLE ROW 2x13 pol. MODU IV Gehäuse, zweireihig	
TOLERANCES UNLESS OTHERWISE SPECIFIED: ±0.2 mm		PRODUCT SPEC -	APPLICATION SPEC -	SIZE A2	CAGE CODE 00779
MATERIAL Pa6.6 13GF Schwarz BLACK		FINISH -	WEIGHT -	DRAWING NO G-927690	RESTRICTED TO -
CUSTOMER DRAWING			SCALE 5:1	SHEET 1 OF 1	REV E2