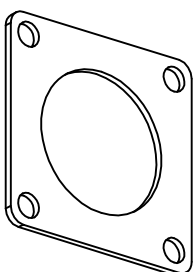
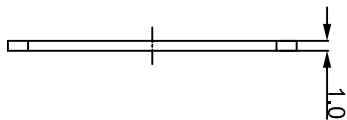
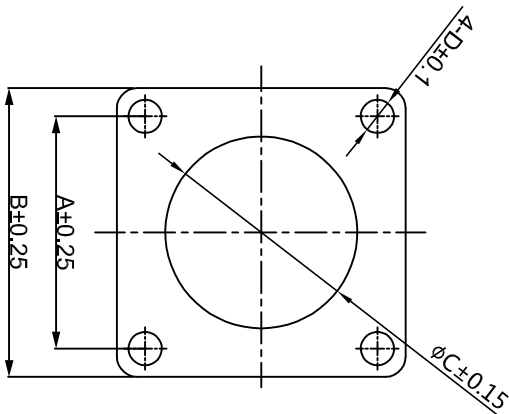


REVISIONS					
REV	ECO	DESCRIPTION	DATE	BY	APPR
B1	-	RELEASED DRAWING	JAN-18-2014	ARROW	TOMMY
B2	-	UPDATE DRAWING	APR-18-2017	FLAN	TOMMY
B3	-	UPDATE DRAWING	May-19-17	Regan	Tommy
B4	-	UPDATE TOLERANCE OF "D"	Jul/25/17	Nick	Tommy
B5	-	ADD PART NO. OF #8	May-8-2018	Flan	Tommy



- NOTES:
1. MATERIAL : EPDM(BLACK). U194 V-0
 2. SEALING FOR WALL MOUNTING RECEPTACLES.
 3. SUITABLE FOR RTG-RT0-RT0W-RT50.

PART NO:	SHELL	A	B	C	D
RTFD088	08	15.3	20.6	12.0	3.2
RTFD108	10	18.3	23.8	15.1	3.3
RTFD128	12	20.6	26.8	19.1	3.3
RTFD148	14	23.0	28.6	22.2	3.3
RTFD168	16	24.6	31.0	25.4	3.3
RTFD188	18	27.0	33.3	28.6	3.3
RTFD208	20	29.4	36.5	31.8	4.3
RTFD228	22	31.8	39.4	35.1	3.3
RTFD248	24	34.9	42.5	38.1	4.3

QUANTITY	PART NUMBER	DESCRIPTION	ITEM

UNLESS OTHERWISE SPECIFIED			
1) All dimensions are in millimeters.	2) Tolerances are as follows:	3) Note reference =	
1 Pt. DEC 240.30	Fractions ±1/64		
2 Pt. DEC 240.30	Fractions ±1/32		
3 Pt. DEC 240.08	Angles ±1°		

SIGNATURES		DATE	
DRAWN: Flan	16/9/2018	CHECKED: 10d	16/9/2018
ENGINEER: Tommy	16/9/2018	APPROVAL: Tommy	16/9/2018
CUSTOMER:			

ECO-MATE GASKET
RT 360 SERIES

Sine Systems - www.amphenol-sine.com
44724 Morley Drive
Clinton Township, MI 48036

SIZE: B C-
TYPE: RTFDXMB
SCALE: NONE
SHEET: 1 OF 1