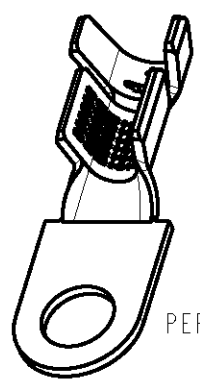
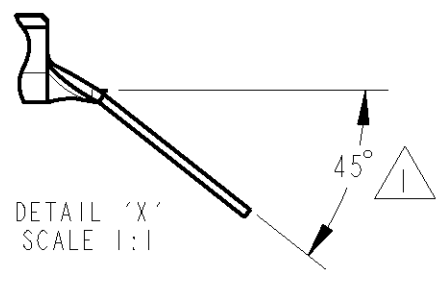
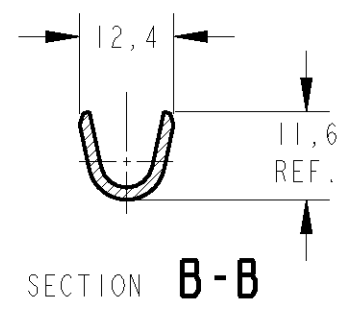
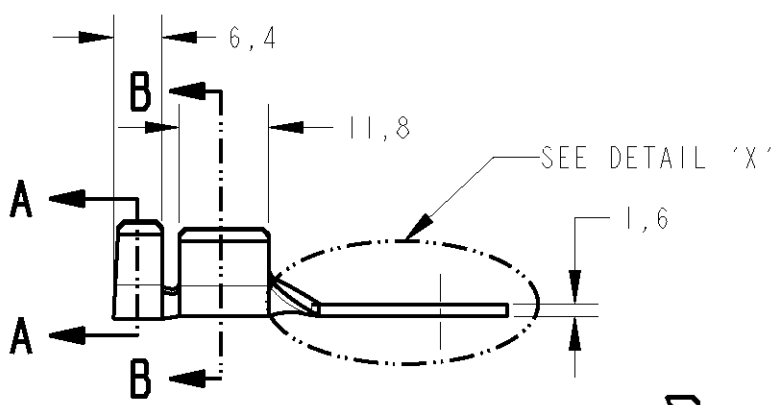
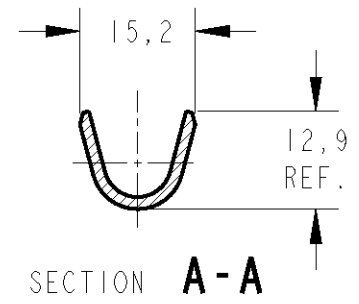
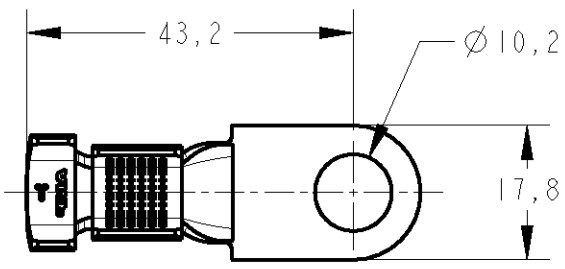


LOC	DIST	REVISIONS					
AP	- / -	P	LTR	DESCRIPTION	DATE	DWN	APVD
		B	I	WAITING FOR AN ECO, REDRAWN BY CAD	29MAY2006	AP	PLF
		C		REVISED BY ECO-06-017899	15AUG2006	RKSTL	PLF



PERSPECTIVE VIEW
SCALE 1:1

DETAIL 'X'
SCALE 1:1

WIRE RANGE
16 - 20 mm ²

△ - A SER EXECUTADO
NO APLICADOR

△ - WILL BE DONE
AT APPLICATOR

74EB 14452 AA	ESTANHADO / TIN PLATED	LATÃO / BRASS	880211-2
— / —	— / —		880211-1
FORD PN	FINISH	MATERIAL	PART NUMBER

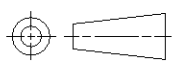
DIMENSIONS:
mm

TOLERANCES UNLESS OTHERWISE SPECIFIED:

0 PLC	±
1 PLC	±0,3
2 PLC	±
3 PLC	±
4 PLC	±
ANGLES	±1

DWN	A. PERUSSI	29MAY2006
CHK	P. L. FARIA	29MAY2006
APVD	M. L. OGAWA	29MAY2006
PRODUCT SPEC	-	
APPLICATION SPEC	-	
WEIGHT	- / -	

MATERIAL	TABLE	FINISH	TABLE
AMP		Tyco Electronics Brazil Sao Paulo - Brasil	
NAME BATTERY TERMINAL			
SIZE	CAGE CODE	DRAWING NO	RESTRICTED TO
A 4	00779	C=880211	- / -



CUSTOMER DRAWING	SCALE	1 : 1	SHEET	1	OF	1	REV	C
------------------	-------	-------	-------	---	----	---	-----	---

THIS DRAWING IS UNPUBLISHED. RELEASED FOR PUBLICATION 20 BY TYCO ELECTRONICS CORPORATION. ALL RIGHTS RESERVED. COPYRIGHT 20