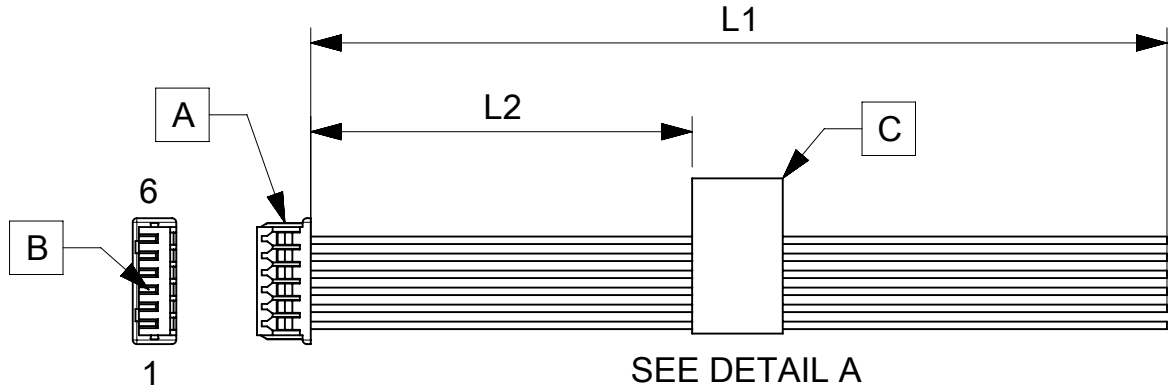


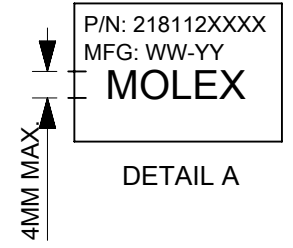
ITEM	PART#	DESCRIPTION	QTY	UOM
A	510210600	PicoBlade1.25 Rec Hsg 6P	1	PC
B	500588000	PicoBlade1.25 Crimp Rec Term Chain Tin	6	PC
C	--	Blank label 12.7x35.5mm (WHT:12.7mm) HF	1	PC

FROM	TO	DESCRIPTION	COLOR
A1	--	CABLE 28 AWG UL 1061 BLACK	BLACK
A2	--	CABLE 28 AWG UL 1061 BLACK	BLACK
A3	--	CABLE 28 AWG UL 1061 BLACK	BLACK
A4	--	CABLE 28 AWG UL 1061 BLACK	BLACK
A5	--	CABLE 28 AWG UL 1061 BLACK	BLACK
A6	--	CABLE 28 AWG UL 1061 BLACK	BLACK



SEE DETAIL A

TABLE			
PART NUMBER	L1	L2 (REF)	TITLE
2181120600	75±5	30	6 CIRCUIT PICOBLADE R:BLUNT CABLE 75MM
2181120601	150±6	70	6 CIRCUIT PICOBLADE R:BLUNT CABLE 150MM
2181120602	225±6	105	6 CIRCUIT PICOBLADE R:BLUNT CABLE 225MM
2181120603	300±8	145	6 CIRCUIT PICOBLADE R:BLUNT CABLE 300MM
2181120604	425±8	205	6 CIRCUIT PICOBLADE R:BLUNT CABLE 425MM



- NOTES**
1. Connector view shown is from mating side.
 2. Free ends must be blunt cut.
 3. Label text must be 2mm max. in height with Arial font.
 4. Label must be wrapped in flag type on the cables.

REVISION			
DATE	REV	DESCRIPTION	CHANGER
04/03/2021	A	INITIAL RELEASE	ARAJU

DOCUMENT STATUS	P1	RELEASE DATE	2021/03/26	04:03:44
-----------------	----	--------------	------------	----------

FUNCTIONAL SYMBOLS	THIS DRAWING CONTAINS INFORMATION THAT IS PROPRIETARY TO MOLEX ELECTRONIC TECHNOLOGIES, LLC AND SHOULD NOT BE USED WITHOUT WRITTEN PERMISSION		
$\frac{F}{A} = 0$	DIMENSION UNITS	SCALE	CURRENT REV DESC:
$\frac{F}{E} = 0$	mm	NTS	
$\frac{F}{P} = 0$	GENERAL TOLERANCES (UNLESS SPECIFIED)		
DIVISIONAL SYMBOLS	ANGULAR TOL	± °	
	4 PLACES	±	EC NO: 659320
	3 PLACES	±	DRWN: ARAJU 2021/03/04
	2 PLACES	±	CHK'D: RDESAI01 2021/03/26
	1 PLACE	±	APPR: RDESAI01 2021/03/26
	0 PLACES	±	INITIAL REVISION:
			DRWN: ARAJU 2021/03/04
			APPR: RDESAI01 2021/03/26
DRAFT WHERE APPLICABLE MUST REMAIN WITHIN DIMENSIONS	THIRD ANGLE PROJECTION	DRAWING	SERIES
		A4-SIZE	218112
		MATERIAL NUMBER	CUSTOMER
		SEE TABLE	GENERAL MARKET
		DOCUMENT NUMBER	DOC TYPE
		2181120600	PSD
		DOC PART	REVISION
		000	A
		SHEET NUMBER	
		1 OF 1	