

Base strip - GMSTBA 2,5 HC/11-G-7,62 - 1728947

Please be informed that the data shown in this PDF Document is generated from our Online Catalog. Please find the complete data in the user's documentation. Our General Terms of Use for Downloads are valid (<http://phoenixcontact.com/download>)

Header, Nominal current: 16 A, Rated voltage (III/2): 630 V, Number of positions: 11, Pitch: 7.62 mm, Color: green, Contact surface: Tin, Assembly: Soldering



The illustration shows the 5-position version of the product

Product Features

- ✓ CR-MSTB coding sections as protection against mismatching
- ✓ GMSTB 2,5 HC headers for use in combination with GMSTB 2,5 HCV plugs
- ✓ Compact 7.62 mm pitch



Key commercial data

| | |
|--------------------------------------|----------|
| Packing unit | 1 pc |
| Minimum order quantity | 50 pc |
| Weight per Piece (excluding packing) | 6.5 GRM |
| Custom tariff number | 85366990 |
| Country of origin | Germany |

Technical data

Dimensions

| | |
|----------------|----------|
| Length | 12 mm |
| Pitch | 7.62 mm |
| Dimension a | 76.2 mm |
| Pin dimensions | 1 x 1 mm |
| Hole diameter | 1.4 mm |

General

| | |
|-----------------------------|---------------------|
| Range of articles | GMSTBA 2,5 HC/...-G |
| Insulating material group | I |
| Rated surge voltage (III/3) | 6 kV |

Base strip - GMSTBA 2,5 HC/11-G-7,62 - 1728947

Technical data

General

| | |
|---|--------|
| Rated surge voltage (III/2) | 6 kV |
| Rated surge voltage (II/2) | 6 kV |
| Rated voltage (III/3) | 500 V |
| Rated voltage (III/2) | 630 V |
| Rated voltage (II/2) | 1000 V |
| Connection in acc. with standard | EN-VDE |
| Nominal current I _N | 16 A |
| Maximum load current | 16 A |
| Insulating material | PA |
| Inflammability class according to UL 94 | V0 |
| Color | green |
| Number of positions | 11 |

Classifications

eCl@ss

| | |
|------------|----------|
| eCl@ss 4.0 | 272607xx |
| eCl@ss 4.1 | 27260701 |
| eCl@ss 5.0 | 27260701 |
| eCl@ss 5.1 | 27260701 |
| eCl@ss 6.0 | 27260704 |
| eCl@ss 7.0 | 27440402 |
| eCl@ss 8.0 | 27440402 |

ETIM

| | |
|----------|----------|
| ETIM 3.0 | EC001121 |
| ETIM 4.0 | EC002637 |
| ETIM 5.0 | EC002637 |

UNSPSC

| | |
|---------------|----------|
| UNSPSC 6.01 | 30211810 |
| UNSPSC 7.0901 | 39121409 |
| UNSPSC 11 | 39121409 |
| UNSPSC 12.01 | 39121409 |
| UNSPSC 13.2 | 39121409 |

Base strip - GMSTBA 2,5 HC/11-G-7,62 - 1728947

Approvals

Approvals


Approvals


UL Recognized / cUL Recognized / GOST / GOST / cULus Recognized


Ex Approvals


Approvals submitted

Approval details

| | | |
|--|--------|-------|
| UL Recognized  | | |
| | B | D |
| Nominal current IN | 18.5 A | 10 A |
| Nominal voltage UN | 300 V | 300 V |

| | | |
|--|--------|-------|
| cUL Recognized  | | |
| | B | D |
| Nominal current IN | 18.5 A | 10 A |
| Nominal voltage UN | 300 V | 300 V |

| | | |
|--|--|--|
| GOST  | | |
|--|--|--|

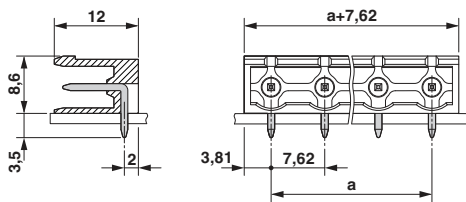
| | | |
|--|--|--|
| GOST  | | |
|--|--|--|

| | | |
|--|--|--|
| cULus Recognized  | | |
|--|--|--|

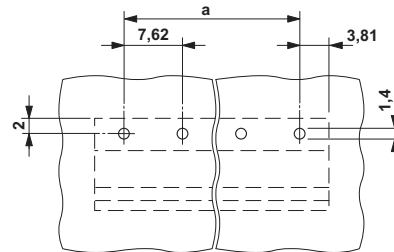
Base strip - GMSTBA 2,5 HC/11-G-7,62 - 1728947

Drawings

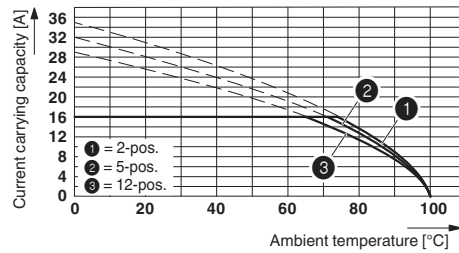
Dimensioned drawing



Drilling diagram



Diagram



Derating curve for: GMSTB 2,5 HCV/...-ST-7,62 with GMSTBA 2,5 HC/...-G-7,62