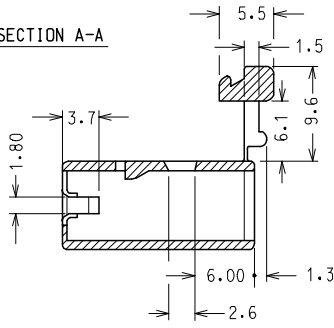
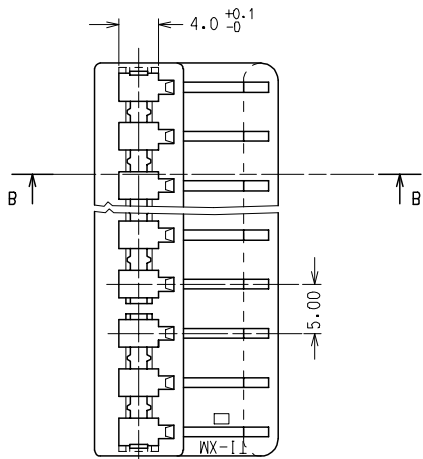
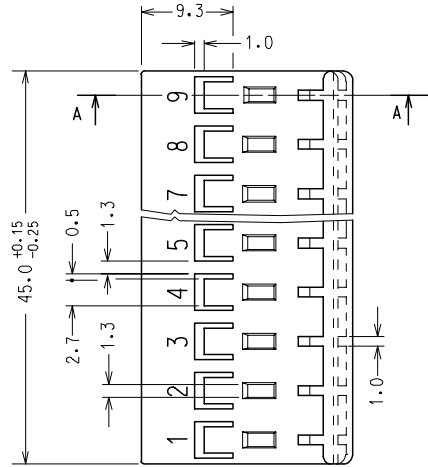
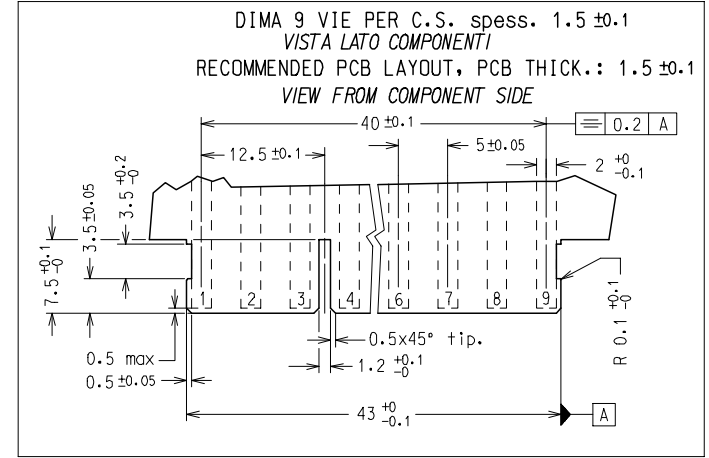
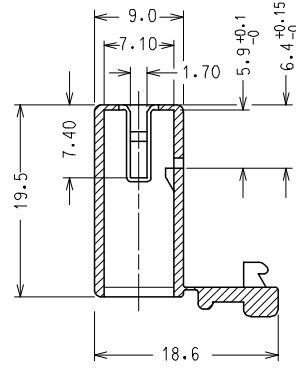


10 9 8 7 6 5 4 3 2 1

SECTION A-A



SECTION B-B



CODICE P/N	MATERIAL
94529-9109	PA 6.6 NAT. UL94 V2 GWT 850 °C
94529-4109	NYLON 6.6 GWT 750 °C sec. IEC 60335-1 TEST METHOD IEC 60695-2-11 NATURAL

NOTA: LE DIMENSIONI VANNO MISURATE CON CORPI STABILIZZATI.  
 (AUMENTO IN PESO DEL 2.7 %)

NOTE: PARTS SHALL BE DIMENSIONALLY CHECKED AFTER ATTAINING EQUILIBRIUM CONDITIONS E.G. 27 % INCREASE IN WEIGHT FOR HUMIDITY ABSORPTION FROM DRY STATUS.

CARATTERISTICHE PRODOTTO SECONDO PS-94529  
 PRODUCT CHARACTERISTICS ACCORDING TO PS-94529 E

CONFEZIONE: 2500 pz. IN SCATOLA  
 PACKAGING: 2500 pcs IN CARTON BOX

SPQ: 2500 pz.

Descr. Std: HSG FOR FORK TERMINAL 9 CKT

EC NO: Z2007-0038 DRWN: BARBER 2006/09/20 CHKD: SANDANO 2006/09/20 APPR: FBISSELLO 2006/09/25	QUALITY SYMBOLS ▽=0 ▽=0	GENERAL TOLERANCES (UNLESS SPECIFIED)		DIMENSION STYLE		SCALE	DESIGN UNITS	FIRST ANGLE PROJECTION		
				MM ONLY		2:1	METRIC			
				DRAWN BY DATE		TITLE				
				CHECKED BY DATE		9 CKT HOUSING FOR STRAIGHT FORK TERMINAL				
		2 PLACES ±0.1 ±---		APPROVED BY DATE		MOLEX MOLEX INCORPORATED				
		1 PLACE ±0.2 ±---		GZUIN 2001/09/17		DOCUMENT NO. SD-94529-025				
		ANGULAR ± 2 °		MATERIAL NO.		SHEET NO. 1 OF 00				
		DRAFT WHERE APPLICABLE MUST REMAIN WITHIN DIMENSIONS		SEE TABLE		THIS DRAWING CONTAINS INFORMATION THAT IS PROPRIETARY TO MOLEX INCORPORATED AND SHOULD NOT BE USED WITHOUT WRITTEN PERMISSION				
A2		REV		SIZE A3						

9 8 7 6 5 4 3 2 1