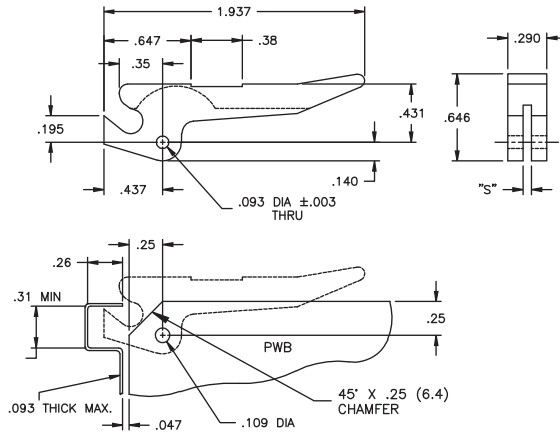


R1001 Inserter / Extractor



Features

- Passivated stainless steel pins (per MIL-P-10971), supplied with each inserter/extractor

Roll Pins for use with following Inserter/Extractors		
RRP-250	RRP-312	RRP-375
R1001-062	R11073-062	R1209-062
R1002-093	R11073-093	R1209-093
R1003-125	R11073-125	R1209-125
R1107-062	R1107310-062	-
R110710-062	R1107310-093	-
-	R1107310-125	-

Material: Nylon 6/6, RMS-48 • Color: Natural		
Part No.	Standard Pack: 100 per bag	
	"S"	PCB Thickness
R1001-062	.075 (1.9)	.062 (1.6)
R1002-093	.100 (2.5)	.093 (2.4)
R1003-125	.140 (3.6)	.125 (3.2)

R1107 Inserter / Extractor

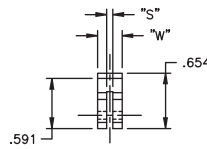
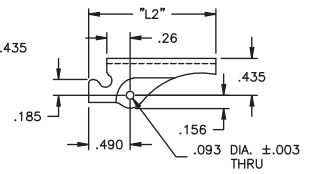
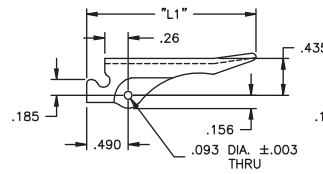
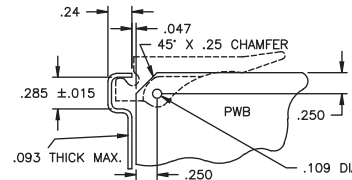


Fig. 1

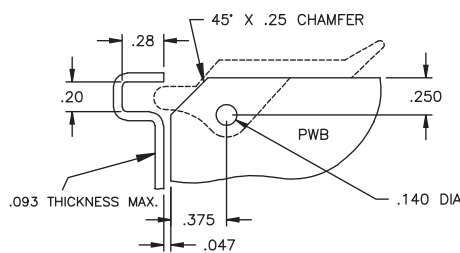
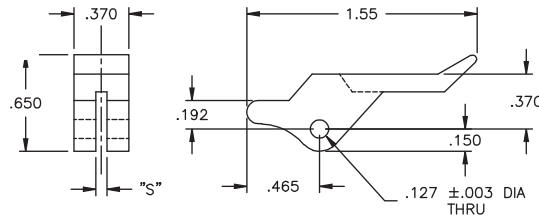
Fig. 2



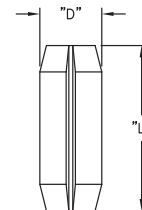
Material: Glass filled nylon per ASTM D4066 PA111 G30F04 Color: Natural						
Part No.	Standard Pack: 100 per bag					Fig. #
	"S"	"W"	"L1"	"L2"	PCB Thickness	
R1107-062	.075 (1.9)	.29 (7.4)	2.0 (50.8)		.062 (1.6)	1
R11073-062	.075 (1.9)	.35 (8.9)			.093 (2.4)	
R11073-093	.100 (2.5)				.125 (3.2)	
R11073-125	.140 (3.6)	.29 (7.4)		1.5 (38.1)	.062 (1.6)	2
R110710-062	.075 (1.9)	.35 (8.9)			.093 (2.4)	
R1107310-062	.075 (1.9)				.125 (3.2)	
R1107310-093	.100 (2.5)					
R1107310-125	.140 (3.6)					



R1209 Inserter / Extractor



RRP Round Roll Pins



Material: Nylon 6/6, RMS-48 Color: Natural		
Part No.	Standard Pack: 100 per bag	
	"S"	PCB Thckns.
R1209-062	.075 (1.9)	.062 (1.6)
R1209-093	.100 (2.5)	.093 (2.4)
R1209-125	.140 (3.6)	.125 (3.2)

Material: Passivated Stainless Steel per MIL-P-10971 Color: Silver		
Part No.	Standard Pack: 100 per bag	
	"D"	"L"
RRP-250	3/32 (2.4)	1/4 (6.4)
RRP-312	3/32 (2.4)	5/16 (7.9)
RRP-375	1/8 (3.2)	3/8 (9.5)