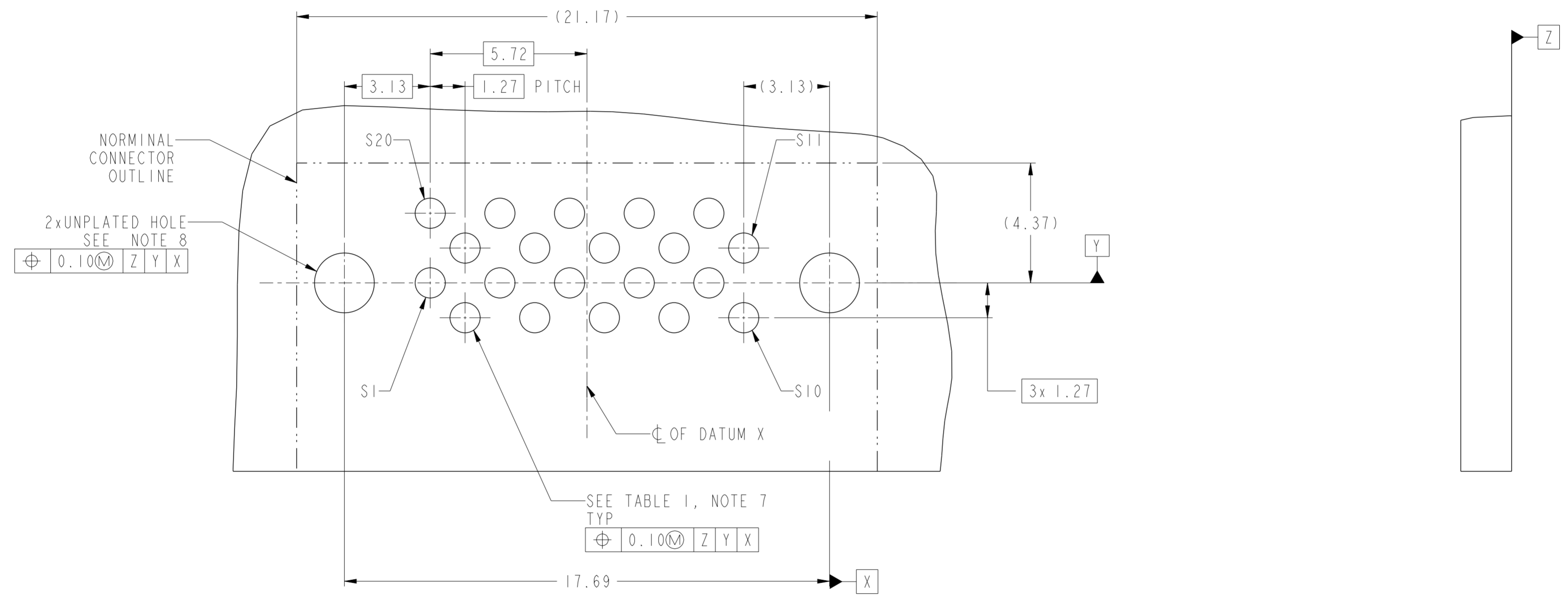


Amphenol
FCi

© 2016 AFci

spec ref	-	dr	Sunny2 Liu	2016/06/06	projection	MM	size	A2	scale	4:1		
tolerance std	ISO 406 ISO 1101	eng	Sunny2 Liu	2019/08/07			ecn no	ELX-DG-34203-1				
TOLERANCES UNLESS OTHERWISE SPECIFIED		chr	Feng Zheng	2019/08/07			rel level	Released				
surface	ISO 1302	appr	Zheng, Pei-Min	2019/08/07			product family	HPCE R/A - ENHANCED WALL				
	linear	0.X	±0.50		title	20S			cat. no.	10139831	rev	B
		0.XX	±0.25		Product - Customer Drw	sheet 1 of 4						
	angular	0°	±2°									

CONTACT TYPE	TOP LAYER DESCRIPTION	TABLE 1 (HPCE / SOLDER TAILS) PLATED THROUGH-HOLE REQUIREMENTS				
		DRILLED HOLE DIAMETER	COPPER THICKNESS	TIN-LEAD THICKNESS	TIN THICKNESS	FINISHED HOLE DIAMETER
SIGNAL	TIN-LEAD	0.93-1.02 (1.00 DRILL)	0.025 - 0.050	0.005 - 0.015	--	0.85-0.95
	IMMERSION TIN	0.93-1.02 (1.00 DRILL)	0.025 - 0.050	--	0.9 - 1.5um	0.85-0.95
	COPPER	0.93-1.02 (1.00 DRILL)	0.025 - 0.050	--	--	0.85-0.95



RECOMMENDED PCB LAYOUT
DIMENSION TOLERANCE IS 0.05MM

2xUNPLATED HOLE
SEE NOTE 8

⊕	0.10	M	Z	Y	X
---	------	---	---	---	---

SEE TABLE 1, NOTE 7
TYP

⊕	0.10	M	Z	Y	X
---	------	---	---	---	---

spec ref	-	dr	Sunny2 Liu	2016/06/06	projection	MM	size	A2	scale	4:1	
tolerance std	ISO 406 ISO 1101	eng	Sunny2 Liu	2019/08/07			ecn no	ELX-DG-34203-1	rel level	Released	
surface	linear	chr	Feng Zheng	2019/08/07							
		appr	Zheng, Pei-Min	2019/08/07							
ISO 1302	angular	0°	±2°	product family	HPCE R/A - ENHANCED WALL	cat. no.	20S	rel level	Released		
							title	HPCE R/A - ENHANCED WALL		rev	B
							dwg no	10139831		sheet 2 of 4	
							Product - Customer Drw				

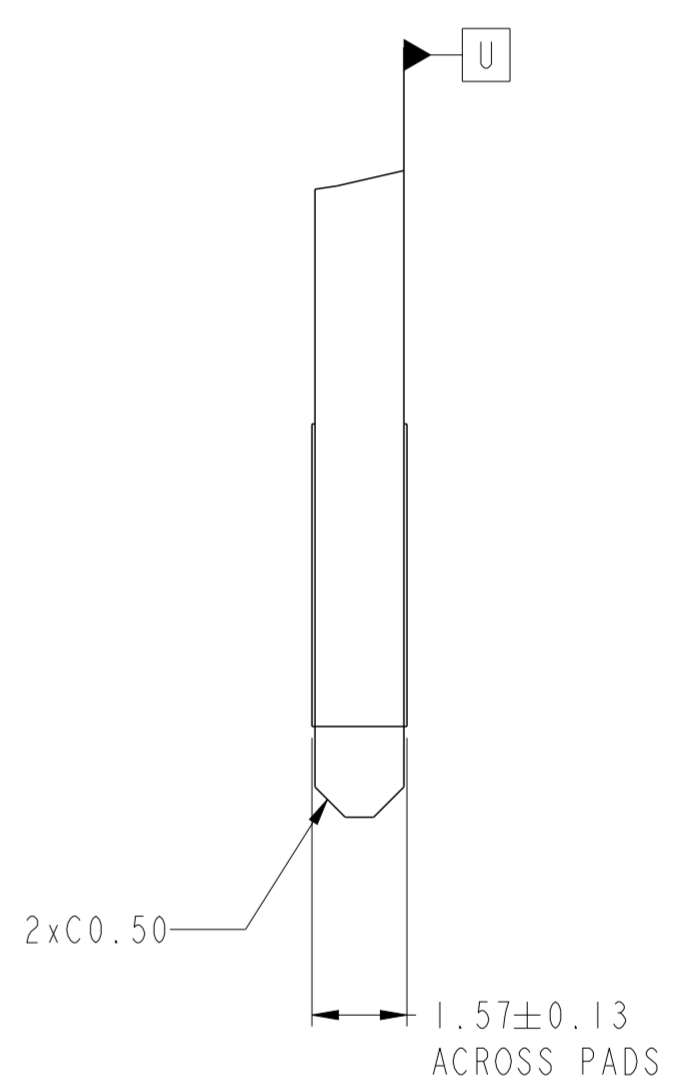
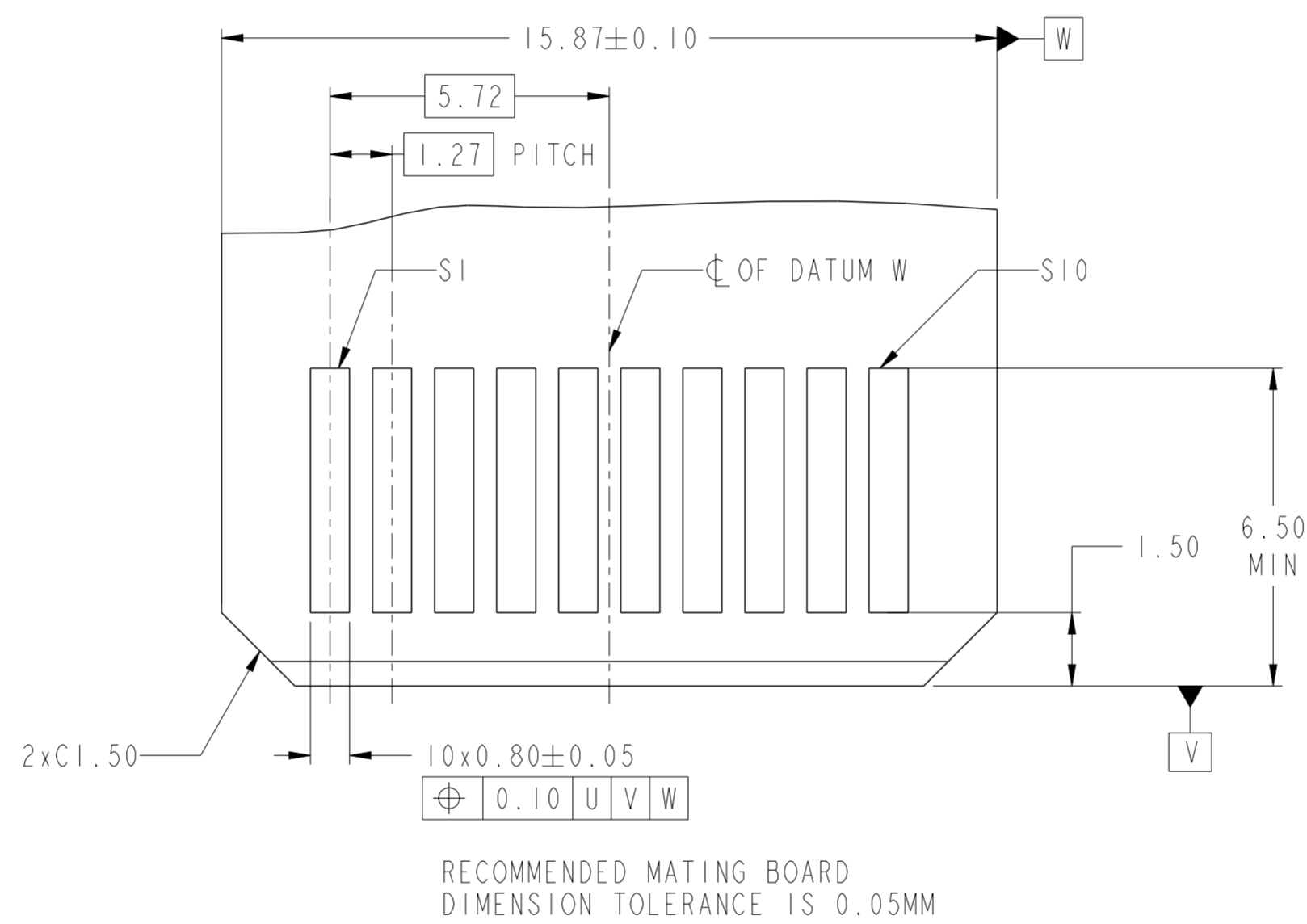
PDS: Rev :B

STATUS:Released

Printed: Aug 07, 2019

Amphenol FCI

© 2016 AFCI



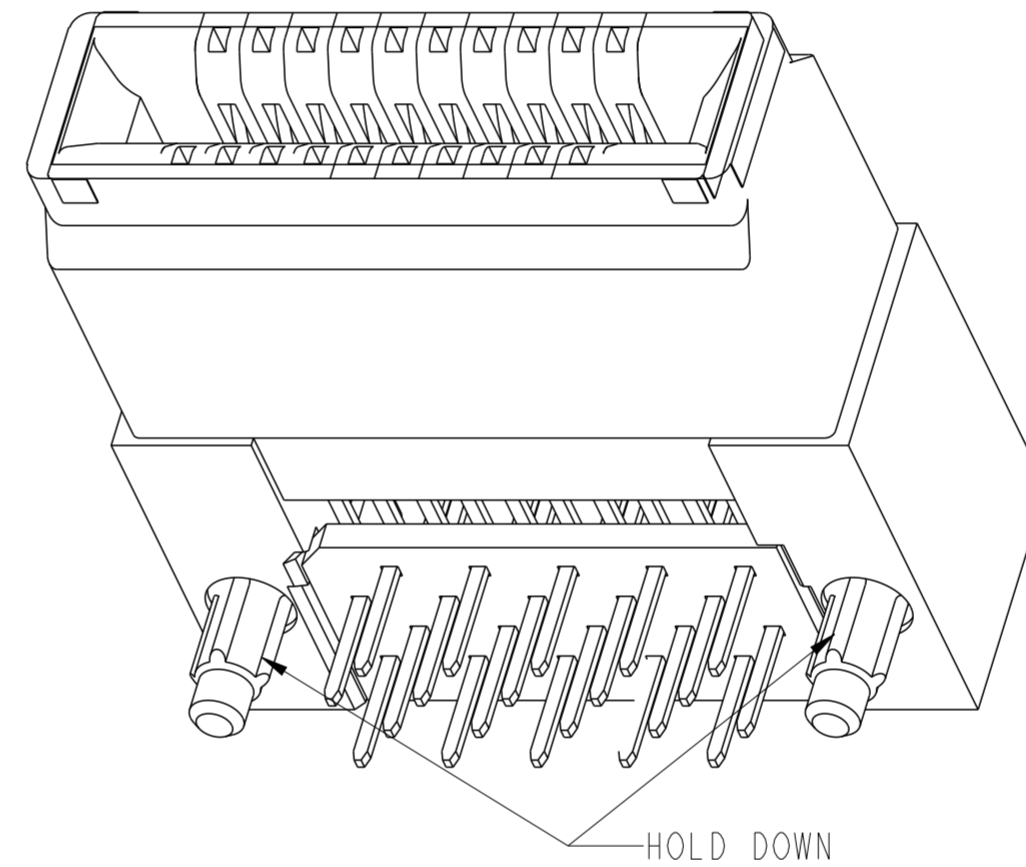
Amphenol
FCi

© 2016 AFci

spec ref	-	dr	Sunny2 Liu	2016/06/06	projection	MM	size	A2	scale	4:1				
tolerance std	ISO 406 ISO 1101	eng	Sunny2 Liu	2019/08/07			ecn no	ELX-DG-34203-1						
TOLERANCES UNLESS OTHERWISE SPECIFIED		chr	Feng Zheng	2019/08/07			rel level	Released						
		appr	Zheng, Pei-Min	2019/08/07			product family							
surface	ISO 1302				title			HPCE R/A - ENHANCED WALL			div no	10139831	rev	B
linear	0.X				±0.50	20S			Product - Customer Drw			sheet 3 of 4		
angular	0°				±2°	cat. no.								

HPCE PART NUMBER (TABLE 2)

PART NUMBER	TAIL TYPE	HOLD DOWN OPTION	DIM A TYP TAIL LENGTH
10139831-001LF	SOLDER TAIL	YES	2.60±0.25
10139831-002LF		NO	
10139831-003LF	SOLDER TAIL	YES	3.25±0.30
10139831-004LF		NO	
10139831-005LF	SOLDER TAIL	YES	4.05±0.30
10139831-006LF		NO	
10139831-007LF	SOLDER TAIL	YES	4.85±0.30
10139831-008LF		NO	



NOTES:

- CONNECTOR MATERIALS:
HOUSING: HIGH TEMPERATURE THERMAL PLASTIC, BLACK
UL 94V-0 COMPLIANT
CONTACTS: HIGH PERFORMANCE COPPER ALLOY.
- CONTACT FINISH REF. GS-12-604 SECTION 5.2.
- PRODUCT SPECIFICATION: GS-12-604.
- APPLICATION SPECIFICATION: GS-20-128.
- PRODUCT MARKING ON HOUSING IN AREA SHOWN MEETS FCI SPECIFICATION GS-24-007.
- PACKAGING MEETS SPECIFICATION GS-14-937.
- ALL HOLE SIZES ARE FINISHED HOLE SIZES.
- MOUNTING HOLES ARE UNPLATED
Ø 2.18 +/- 0.03 FOR SOLDER TAILS

spec ref	-	dr	Sunny2 Liu	2016/06/06	projection	MM	size	A2	scale	4:1
tolerance std	ISO 406 ISO 1101	eng	Sunny2 Liu	2019/08/07			ecn no	ELX-DG-34203-1		
TOLERANCES UNLESS OTHERWISE SPECIFIED		chr	Feng Zheng	2019/08/07			rel level	Released		
surface	ISO 1302	appr	Zheng, Pei-Min	2019/08/07	product family	HPCE R/A - ENHANCED WALL		cat. no.	10139831	
	linear	0.X	±0.50		title	20S		rev	B	
		0.XX	±0.25		dwg no	10139831		Product - Customer Drw	sheet 4 of 4	
	angular	0°	±2°							