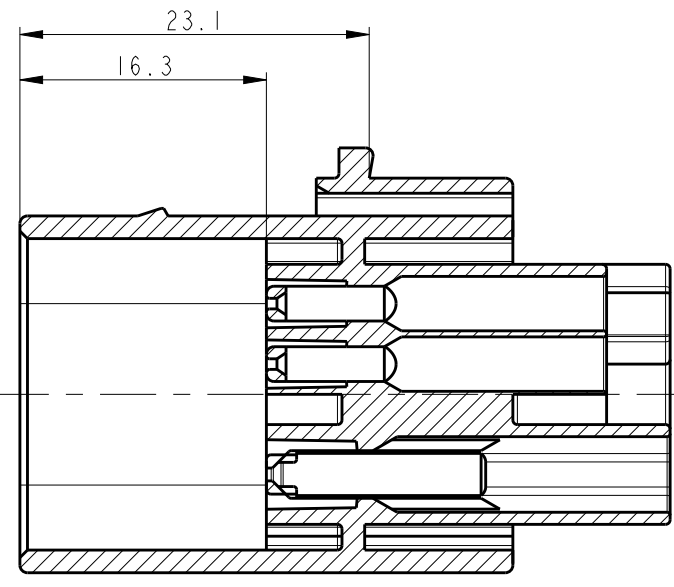
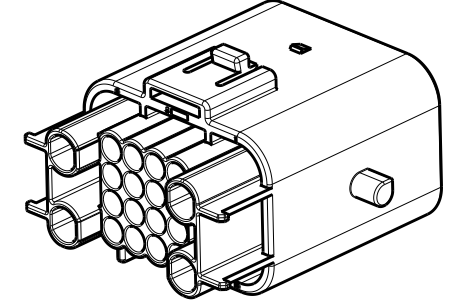
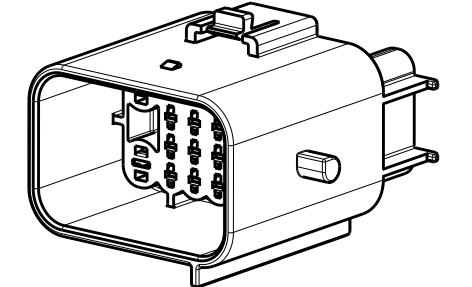
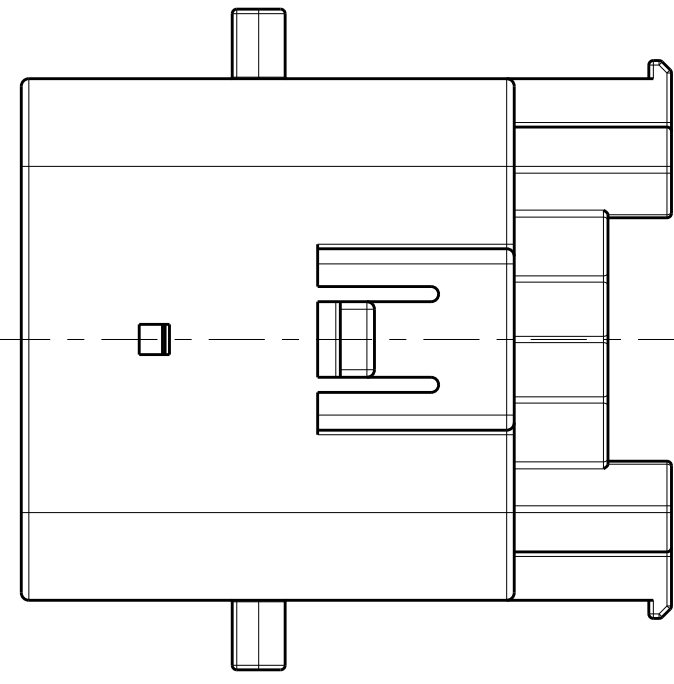


THIS DRAWING IS UNPUBLISHED. RELEASED FOR PUBLICATION 20
 © COPYRIGHT 20 BY - TE Connectivity ALL RIGHTS RESERVED.

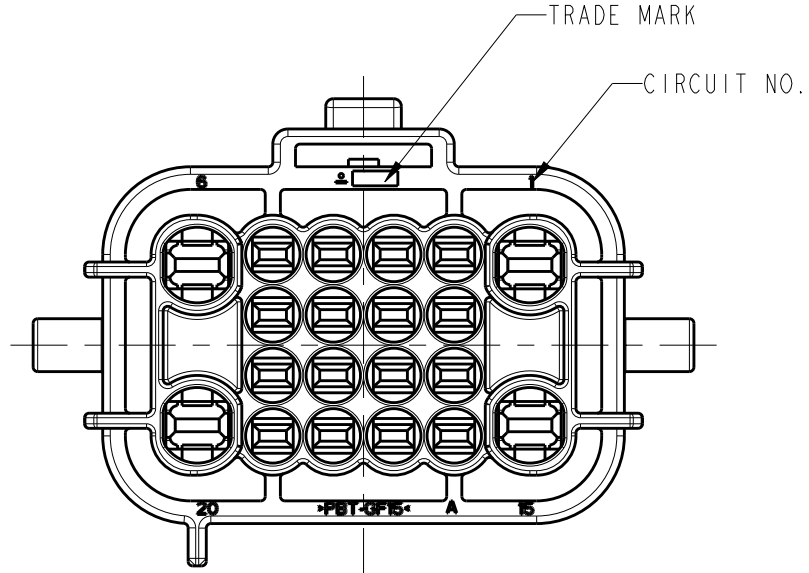
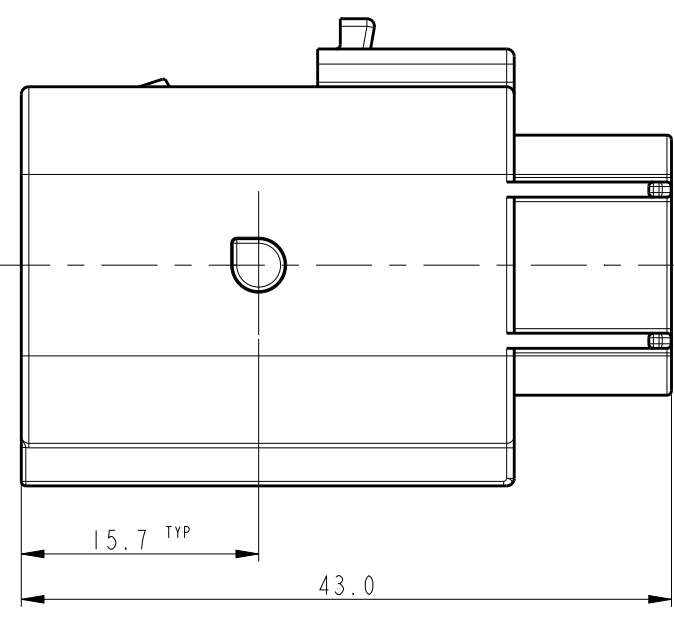
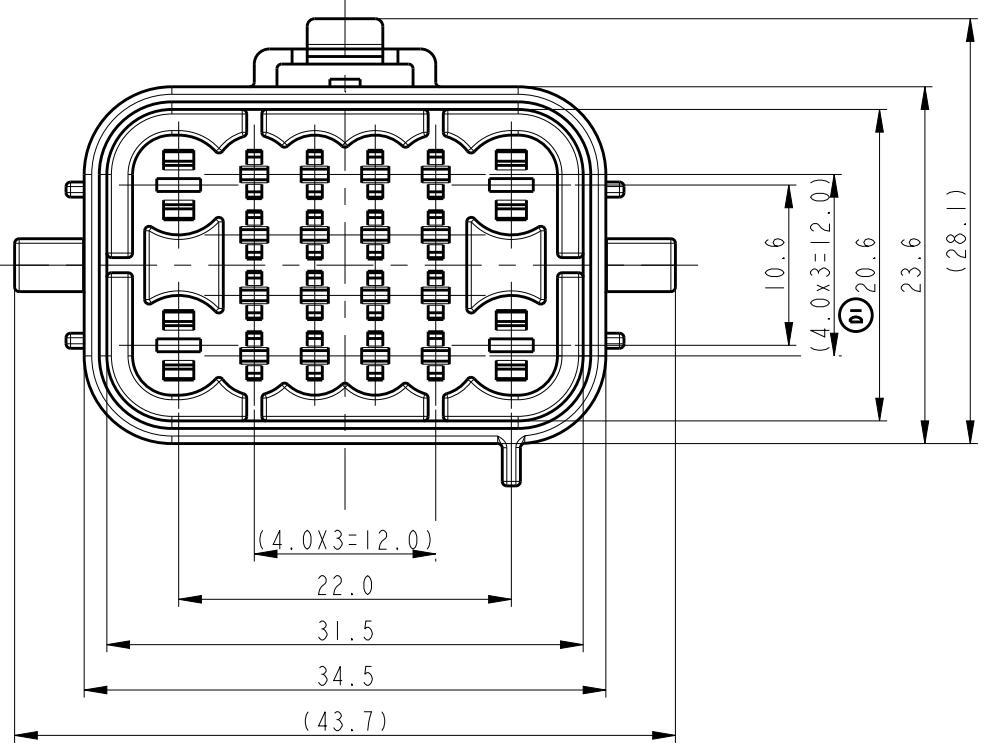
| REVISIONS | | | | |
|-----------|-----|-------------------------|-----------|-------|
| P | LTR | DESCRIPTION | DATE | APVD |
| B | | REVISED (ECR-07-027758) | 05DEC2007 | KT JK |
| C | | REVISED (ECR-10-020545) | 30DEC2010 | SJ HG |
| D | | REVISED (ECR-12-008736) | 11MAY2012 | SJ HG |
| D1 | | REVISED (ECR-16-017155) | 05DEC2016 | SJ JW |



SECTION A-A



3D-VIEW SCALE 1/1



<TABLE 1>

| TYPE | P/N | WIRE SIZE (mm ²) | FINISH |
|------|------------|------------------------------|-------------|
| MT11 | 0-963902-1 | 0.25~0.5 | CuSn4 |
| | 0-963902-3 | | CuSn4(GOLD) |
| | 0-963904-1 | 0.5~1.0 | CuSn4 |
| | 0-963904-3 | | CuSn4(GOLD) |
| JPT | 1-962915-1 | 0.5~0.85 | CuSn4 |
| | 1-962915-3 | | CuSn4(GOLD) |
| | 1-962916-1 | 1.25~2.0 | CuSn4 |
| | 1-962916-3 | | CuSn4(GOLD) |

- NOTE.
- GENERAL TOLERANCE : ±0.3, ±3°
 - DELIVERY CONDITION
 - APPLIED PLUG ASS'Y P/N : 936777
APPLIED WIRE COVER P/N : 936783
 - APPLICABLE CONTACT P/N : TABLE 1

| | | | |
|-------------|----------|-------|------------|
| CAP HSG | PBT-GF15 | BLACK | 0-936780-2 |
| DESCRIPTION | MATERIAL | COLOR | P/N |

| | | | | |
|--|--|-------------------|---|--|
| THIS DRAWING IS A CONTROLLED DOCUMENT. | | DWN S.J. CHOI | TE Connectivity | |
| DIMENSIONS: mm | | CHK S.J. CHOI | | |
| TOLERANCES UNLESS OTHERWISE SPECIFIED | | APVD J.W. JUNG | NAME CAP HSG FOR MT11 JPT HYBRID SEALED 20P CONN'R | |
| 0 PLC ± | | PRODUCT SPEC | SIZE CAGE CODE DRAWING NO RESTRICTED TO | |
| 1 PLC ± | | APPLICATION SPEC | A2 00779 C-936780 | |
| 2 PLC ± | | WEIGHT | SCALE 2:1 SHEET 1 OF 1 REV D1 | |
| 3 PLC ± | | CUSTOMER DRAWING | | |
| 4 PLC ± | | | | |
| ANGLES ± | | | | |
| FINISH ± | | | | |
| MATERIAL SEE TABLE | | | | |