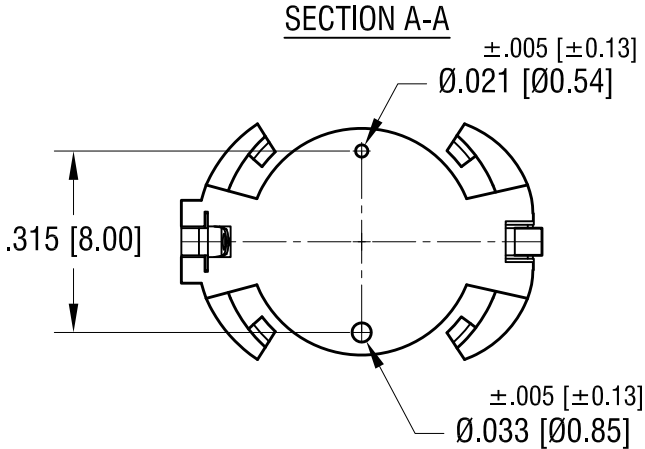
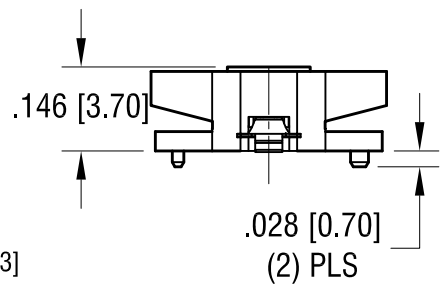
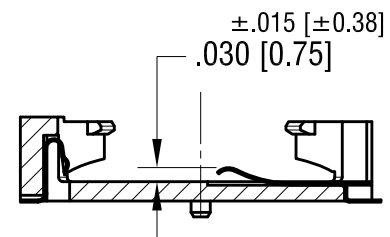
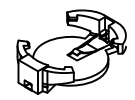
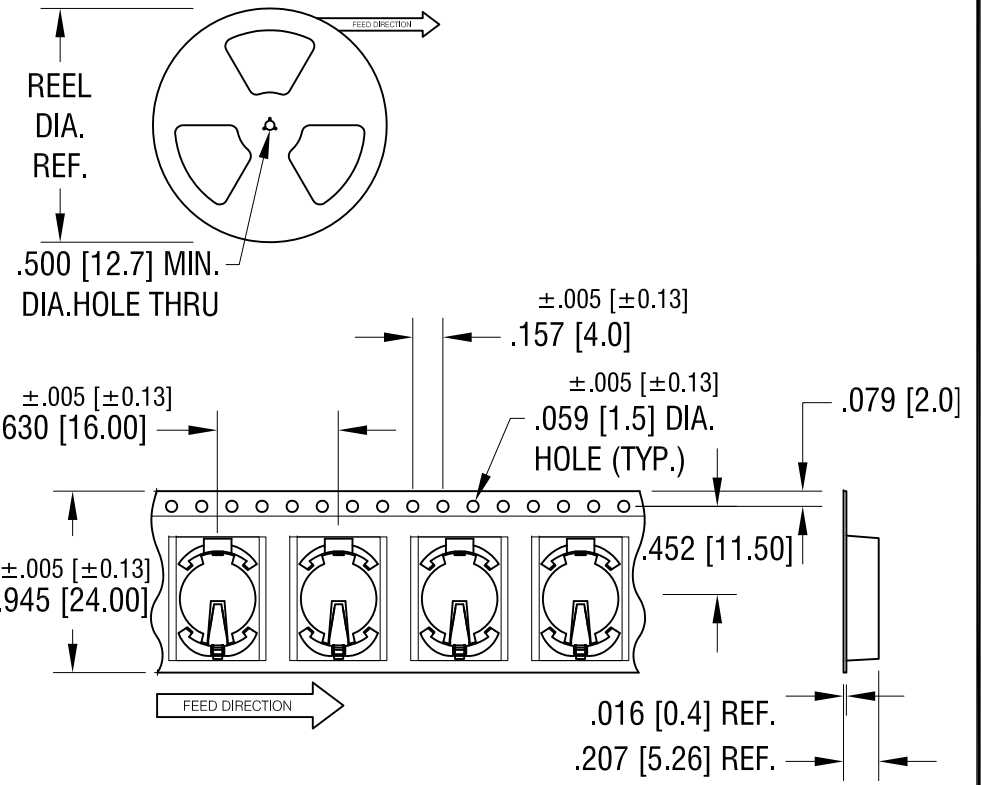


ACTUAL SIZE



DATE	DESCRIPTION	REV.
9.18.20	CHANGE AS PER ECN 20-083 WAS 700 PCS PER 13" REEL	A
8.01.22	CHANGE AS PER ECN 22-138 COIN CELL BATTERY 1225 WAS REMOVED FROM REFERENCE CELLS	B



NOTES:  
 TAPE AND REEL SPECIFICATIONS:  
 1. TAPE:  
 MAT'L - ALL CONDUCTIVE POLYSTYRENE CARRIER  
 ANSI/EIA-481 STANDARD  
 2. REEL:  
 15.0 [380.8] DIA. 1020 PIECES OF  
 PART NO. 1072 PER REEL.

HOLDER SPECIFICATIONS:  
 1. HOUSING: MAT'L- PLASTIC PA9T, BLACK  
 2. CONTACTS: MAT'L- PHOSPHOR BRONZE  
 FINISH: CONTACT AREA- GOLD FLASH  
 SOLDER AREA- MATTE TIN PLATE

THIS DOCUMENT IS THE PROPERTY OF  
 KEYSTONE ELECTRONICS CORP. AND  
 SHALL NOT BE REPRODUCED, DISTRIBUTED  
 OR USED AS A BASIS FOR MANUFACTURE  
 WITHOUT PRIOR WRITTEN PERMISSION  
 FROM KEYSTONE ELECTRONICS CORP.

<b>KEYSTONE ELECTRONICS CORP.</b>			
www.keyelco.com • NEW HYDE PARK, NY 11040 • Tel (516) 328-7500			
PART NAME		BATTERY HOLDER CR1220	
MATERIAL AS NOTED			
FINISH AS NOTED		DRN BY NT	DATE 5.03.16
		APPD RH	SCALE 1X, 3X
TOLERANCES	INCH [MM]	CODE	DWG NO.
DECIMAL	± .010 [± 0.25]	C	1072TR
ANGULAR	± 1°		
UNLESS OTHERWISE SPECIFIED			