

ATLANTIC VERSION TERMINATOR INTERFACE ADAPTER	PART NUMBER	REVISION	DESCRIPTION	FEED TYPE	
	2266199-1	B	FINE CRIMP HEIGHT ADJUST	MECHANICAL	SUPERSEDED BY 5-2837021-1
	2266199-2	B	FINE CRIMP HEIGHT ADJUST	PNEUMATIC	SUPERSEDED BY 5-2837021-2
	2266199-5	B	FINE CRIMP HEIGHT ADJUST	SERVO LATCH PLATE ⁴	OBSOLETE
	2266199-6	B	NON CRIMP HEIGHT ADJUST	SERVO LATCH PLATE ⁴	OBSOLETE
	2266199-7	B	FINE CRIMP HEIGHT ADJUST	NONE	OBSOLETE
	7-2266199-7	A	CRIMP TOOLING KIT	-	

APPLICATOR DATA		
CRIMP	SIZE	TYPE
WIRE	2.59 mm [.102]	F
INSUL	3.60 mm [.142]	OV

APPLICATOR INSTRUCTIONS 408-10389

TERMINAL DATA: G&H TERMINAL		G&H CRIMP SPECIFICATION	
TERMINAL NAME: AFK FEMALE TERMINAL 2.8 X 0.8			
WIRE STRIP LENGTH		INSULATION DIAMETER RANGE	
4.70-5.30 mm [.185-.209 IN]		Ø1.90-2.90 mm [.075-.114 IN]	
TERMINAL APPLICATION SPECIFICATION		G&H Spec Rev 10	
TERMINALS APPLIED			
TE TERMINAL	G&H TERMINAL	TE TERMINAL	G&H TERMINAL
1949035-1	26705.201.185	1949034-1	26657.330.185
1949035-2	26705.201.702	1949034-2	26657.201.142
		1949034-3	26657.201.702

WIRE SIZE	CRIMP HEIGHT mm [INCH]	CRIMP HEIGHT REFERENCE SETTING
2.50mm ²	1.70+/-0.05 [.067+/-0.002]	5.6
2.25mm ²	1.60+/-0.05 [.063+/-0.002]	6.6
1.50mm ²	1.45+/-0.05 [.057+/-0.002]	8.1

- RECOMMENDED SPARE PARTS
- GREASE BEARING SURFACES LIGHTLY
- 3. LUBRICATE DAILY PER THE APPLICATOR INSTRUCTION SHEET SUPPLIED WITH THE APPLICATOR.
- APPLICATOR SPECIFIC DATA TO BE ENTERED INTO BLANK MEMORY CHIP AT ASSEMBLY. SEE BELOW FOR PART NUMBER:
 MECHANICAL FEED WITH "SMART APPLICATOR" CONVERSION: 8-2266199-4
 PNEUMATIC FEED WITH "SMART APPLICATOR" CONVERSION: 8-2266199-4
 SERVO FEED WITH "FINE CRIMP HEIGHT ADJUST": 8-2266199-5
 SERVO FEED WITH "NON-CRIMP HEIGHT ADJUST": 8-2266199-6
- 5. ADJUSTMENT OF THE STRIPPER MAY BE REQUIRED WHEN MOVING THE APPLICATOR BETWEEN BENCH AND LEADMAKER APPLICATIONS.
- APPLY PART NUMBER 1-23419-5 LOCTITE TO THREADS OF ITEM 62 & 180. APPLY PART NUMBER 2-23419-6 LOCTITE TO THREADS OF ITEM 242. FOR -6 ONLY APPLY PART NUMBER 1-23419-5 LOCTITE TO THREADS OF ITEM 37.
- GREASE THREADS, GROOVE AND O-RING ON ITEMS 35 & 252.
- MAGNET, ITEM 166 MUST BE ORIENTED CORRECTLY IN ORDER TO PROPERLY ACTUATE THE COUNTER.
- CRIMP HEIGHT REFERENCE SETTING WAS THE SETTING USED WHEN THE APPLICATOR WAS QUALIFIED AT THE FACTORY. ADJUSTMENT MAY BE NECESSARY WHEN RUNNING APPLICATOR IN THE FIELD.
- SPARE FEED CAM STORAGE LOCATION REFER TO INSTRUCTION SHEET FOR ADDITIONAL INFORMATION.
- TO CONVERT THE APPLICATOR TO A NON-CARRIER CUTTING STYLE, REMOVE ITEM 13 AND ATTACH TO THE LOCATION ON THE BACK SIDE OF THE HOUSING. REFER TO INSTRUCTION SHEET FOR ADDITIONAL INFORMATION.
- WHEN ASSEMBLING A NON CRIMP HEIGHT ADJUST APPLICATOR (-6) USE SHIMS FROM ITEM 260 TO ACHIEVE A NOMINAL SHIM HEIGHT OF 4.10.
- THIS APPLICATOR IS SPECIFIC FOR USE IN A STRIPPER SEAL TERMINATING UNIT.
- FOR SINGLE OR DOUBLE WIRE COMBINATIONS.
- FOR MULTIPLE WIRE COMBINATIONS ONLY.

***WARNING**
 ON INSTALLATION, SET WIRE DISC, ITEM 40 TO LARGEST WIRE SIZE SETTING. USE OF SETTINGS BELOW MINIMUM REQUIRED CRIMP HEIGHT SETTING WILL CAUSE DAMAGE TO CRIMP TOOLING.

	-	-	1	-	-	-	2119957-2	APPLICATOR SHIM PACK		260		
	-	1	-	1	1	1	8-21084-0	O-RING, .676 ID, .070 DIA. MAT.		252		
	-	-	-	-	1	-	2119640-1	PUSH ROD, AIR FEED		250		
	-	-	-	-	1	-	2079988-1	BUSHING, LCH5-12, MISUMI		249		
	-	-	-	-	1	-	2119641-1	FEED CAM, AIR FEED		248		
	-	1	-	1	1	1	2119798-1	DETENT PIN		247		
	-	1	-	1	1	1	1-22279-3	SPRING, COMPRESSION		246		
	-77	-7	-6	-5	-2	-1	PART NO	DESCRIPTION		ITEM NO		

ATLANTIC VERSION
 Shown on sheets 1 of 4 & 2 of 4
 (Pacific version shown on sheets 3 of 4 & 4 of 4)

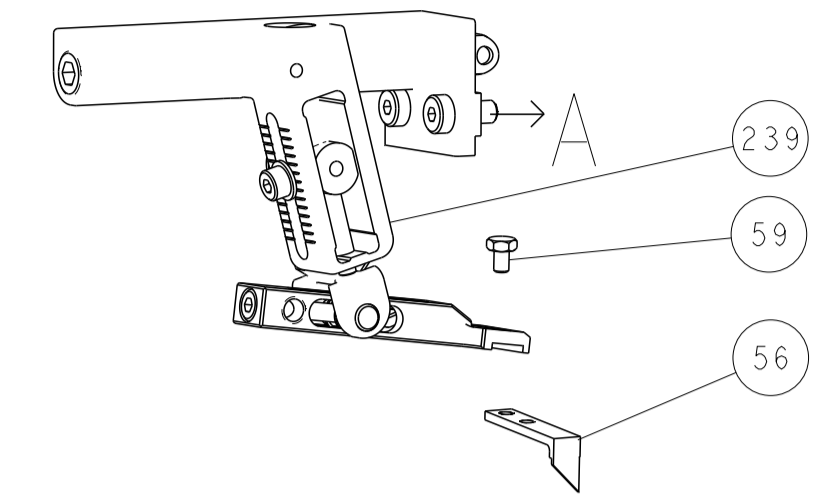
SET UP GAUGE		LOC	DIST	REVISIONS					
2119599-1		A	66	P	LTN	DESCRIPTION	DATE	OWN	APVD
				B		ECR-17-001492	01FEB2017	MR	TE
				B1		ECR-18-014427	08SEP2018	TB	TE

-	-	1	-	-	-	2119758-1	RAM, AMP STYLE, SIDE FEED, NON-ADJ.		245	
-	1	1	1	1	1	2119082-4	CAM, SNAIL, INSULATION ADJUSTMENT		244	
-	1	1	1	1	1	2079764-1	WASHER, WAVE SPRING, CREST-TO-CREST		243	
-	1	1	1	1	1	2119083-1	RETAINER, INSULATION DIAL		242	
-	1	1	1	1	1	7-18023-7	SCR, SKT HD CAP M3 X 4.0		241	
-	-	2	2	-	-	2168400-6	SHCS, LOW HEAD, RoHS, M5 X 16		240	
-	-	-	-	-	1	2119580-1	MECHANICAL FEED ASSEMBLY		239	
-	-	-	-	1	-	2063440-1	AIR FEED MODULE		238	
-	-	1	1	-	-	2119740-2	TAG, IDENTIFICATION		213	
-	-	1	1	-	-	1901094-3	SPACER, FEEDER		198	
-	1	1	1	1	1	4-1722335-3	STRIPPER, SIDE FEED		182	
-	1	1	1	1	1	1-5018030-0	NUT, HEX, REG, RoHS, M3.5		181	
-	1	1	1	1	1	2-1752354-0	STANDOFF, HOLD-DOWN		180	
-	1	1	1	1	1	993111-1	PIN, SLOTTED SPRING 3.0 X 20.0		177	
-	1	1	1	1	1	5-22280-0	SPRING, COMPRESSION		176	
-	1	1	1	1	1	1752353-3	GUIDE PIN, HOLDDOWN		175	
-	1	1	1	1	1	1901680-2	GUIDE PIN, HOLDDOWN		174	
-	-	-	-	2	-	21045-3	RING, RETAIN, EXTERN, 3/16 CRESCENT		172	
-	1	1	1	1	1	994969-1	MAGNET, RARE EARTH HIGH ENERGY		166	
-	REF	REF	REF	REF	REF	994970-2	COUNTER, MAGNETIC		164	
-	-	-	-	1	-	240638-1	SPRING, FEED FINGER		163	
-	-	-	-	1	-	3-23627-7	PIN, RETAIN, GRVD, 3/16 X .854		137	
-	-	-	-	1	-	2119799-1	HOLDER, FEED FINGER, AF		136	
-	-	REF	REF	-	-	-	SEE NOTE 4	MEMORY CHIP, PROGRAMMED		135
-	-	1	1	-	-	1633743-1	SERVO FEED LATCH ASM		133	
-	1	1	1	1	1	1-18028-2	WASHER, FLAT, REG M4		119	
-	-	REF	REF	-	-	2119944-1	FEED FINGER ASSEMBLY, SF		117	
-	1	1	1	1	1	455888-6	SPACER, CRIMPER		82	
-	1	1	1	1	1	2119956-1	DOCUMENTATION PACKAGE		71	
-	1	-	-	1	1	2119740-1	TAG, IDENTIFICATION		67	
-	2	2	2	2	2	2168078-1	SCREW, DRIVE, RH, RoHS, 2 x .188		66	
-	1	-	1	1	1	2119793-1	LIMITER, ADJUSTMENT BOLT		63	
-	3	-	3	3	3	992763-5	SCR, SET, SOC, CONE PNT, M3 x 4.0		62	
-	1	1	1	1	1	2079383-4	SCR, BHSC, RoHS (M4 X 8)		60	
-	-	-	-	1	1	5-18022-5	SCR, HEX HD CAP, M4 X 6.0		59	
-	-	-	-	1	1	1338685-1	PAWL, FEED		56	
-	4	4	4	4	4	2168400-1	SHCS, LOW HEAD, RoHS, M4 X 12		54	
-	2	2	2	2	2	2168083-3	SCR, SKT HD CAP, RoHS, M4 X 12.0		53	
-	1	1	1	1	1	5018030-1	NUT, HEX, REG, RoHS, M3		52	
-	1	1	1	1	1	811242-5	BUMPER, HOLD DOWN		51	
-	1	1	1	1	1	690753-2	SPACER, TONKER		50	
-	-	-	-	1	2	18023-9	SCR, SKT HD CAP M4 X 6.0		49	
-	-	-	-	1	1	2119652-1	FEED CAM, PRE FEED		48	
-	-	-	-	1	1	2119653-1	FEED CAM, POST FEED		47	
-	1	1	1	1	1	2-2119656-1	APPLICATOR BASIC ASSEMBLY, SF		46	
-	1	-	1	1	1	2119370-1	RAM, AMP STYLE, SIDE FEED		44	
-	1	1	1	1	1	2079383-7	SCR, BHSC, RoHS (M8 X 25)		41	
-	1	-	1	1	1	2119645-1	DISC, NUMBERED FA WIRE ADJUSTMENT		40	
-	1	-	1	1	1	2119957-1	APPLICATOR SHIM PACK		39	
-	1	1	1	1	1	1-2119644-2	RAM WASHER, PRECISION		38	
-	1	1	1	1	1	2119085-1	FA HEAD, ATLANTIC STYLE		37	
-	1	-	1	1	1	2119092-1	BOLT, ADJUSTMENT		35	
-	1	1	1	1	1	1-1752356-7	SUPPORT, TERMINAL		34	
-	2	2	2	2	2	2079383-5	SCR, BHSC, RoHS (M4 X 20)		33	
-	1	1	1	1	1	2161328-1	HEX HEAD, FLANGED, M5 x 8mm LONG		32	
-	1	1	1	1	1	1320908-7	SPACER, STRIP GUIDE		30	
-	1	1	1	1	1	2119959-4	ASSEMBLY, STRIP GUIDE		29	
-	1	1	1	1	1	455888-3	SPACER, CRIMPER		28	
-	1	1	1	1	1	240792-1	DRAG, TERMINAL		25	
-	1	1	1	1	1	1320928-2	STRIP GUIDE		24	
-	1	1	1	1	1	2119806-1	INSERT, SHEAR		13	
-	1	1	1	1	1	3-22280-3	SPRING, COMPRESSION		12	
-	1	1	1	1	1	1-356885-4	STOP, SHEAR		11	
-	1	1	1	1	1	2119805-1	SHEAR HOLDER, FRONT		10	
-	1	1	1	1	1	318707-1	FLOATING SHEAR, FRONT		9	
-	1	1	1	1	1	7-1633927-3	ANVIL, COMBINATION		8	
-	1	1	1	1	1	5-240641-9	SPACER		7	
-	-	-	-	-	-	-	-		6	
-	1	1	1	1	1	2119757-8	DEPRESSOR, SHEAR		5	
-	1	1	1	1	1	2-238011-2	BLOCK, CRIMPER SPACER		4	
-	1	1	1	1	1	1-1633963-6	CRIMPER, INSULATION OVERLAP PREMIUM		3	
-	1	1	1	1	1	455888-1	SPACER, CRIMPER		2	
-	1	1	1	1	1	3-1633305-3	CRIMPER, WIRE PREMIUM		1	
-77	-7	-6	-5	-2	-1	PART NO	DESCRIPTION		ITEM NO	

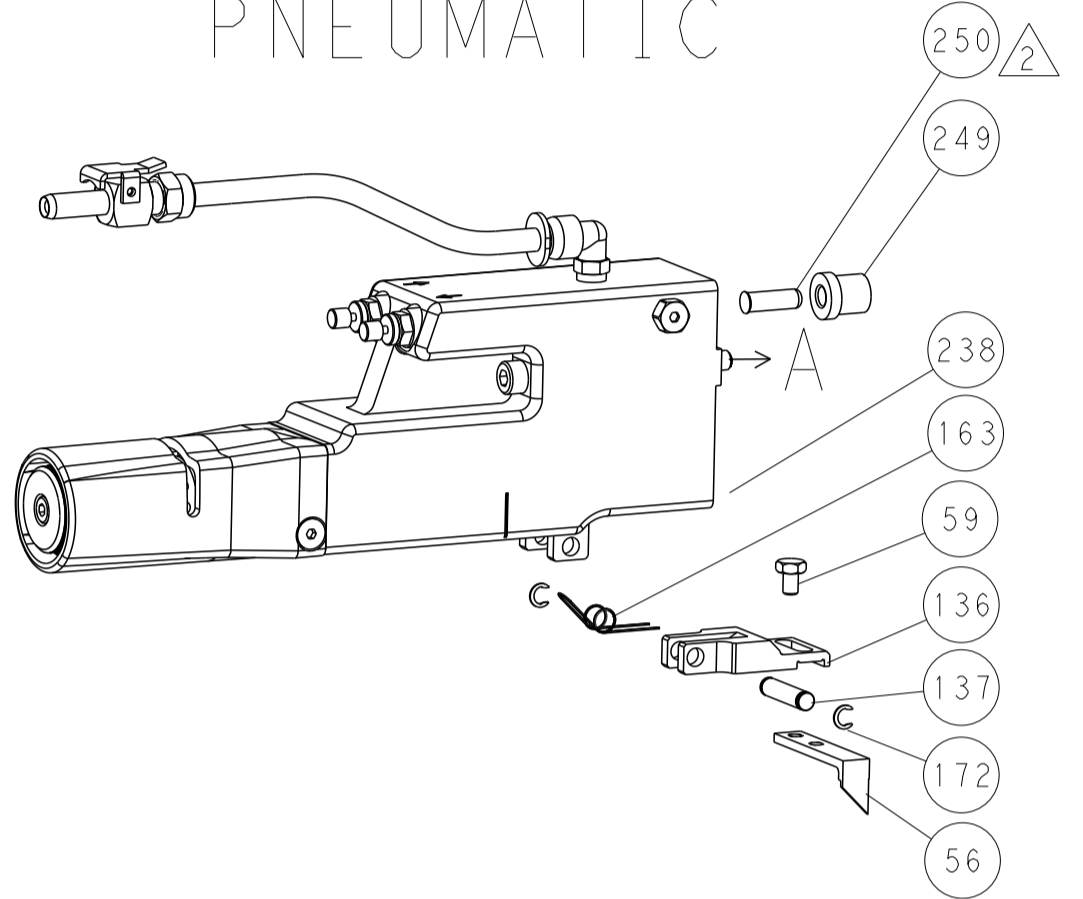
DIMENSIONS:		TOLERANCES UNLESS OTHERWISE SPECIFIED:		DATE		NAME	
mm	0 PLC ±	1 PLC ±	2 PLC ±	21JAN2014	Y. YIN	21JAN2014	G. BAILEY
	3 PLC ±	4 PLC ±	ANGLES ±	21JAN2014	U. GUO	21JAN2014	U. GUO
MATERIAL:	FINISH:	WEIGHT:	SCALE:	Customer Accessible Production Drawing		SCALE:	1:2
				SHEET 1 OF 4		REV:	B1

LOC	DIST	REV	DATE	BY	APPV
A	66				

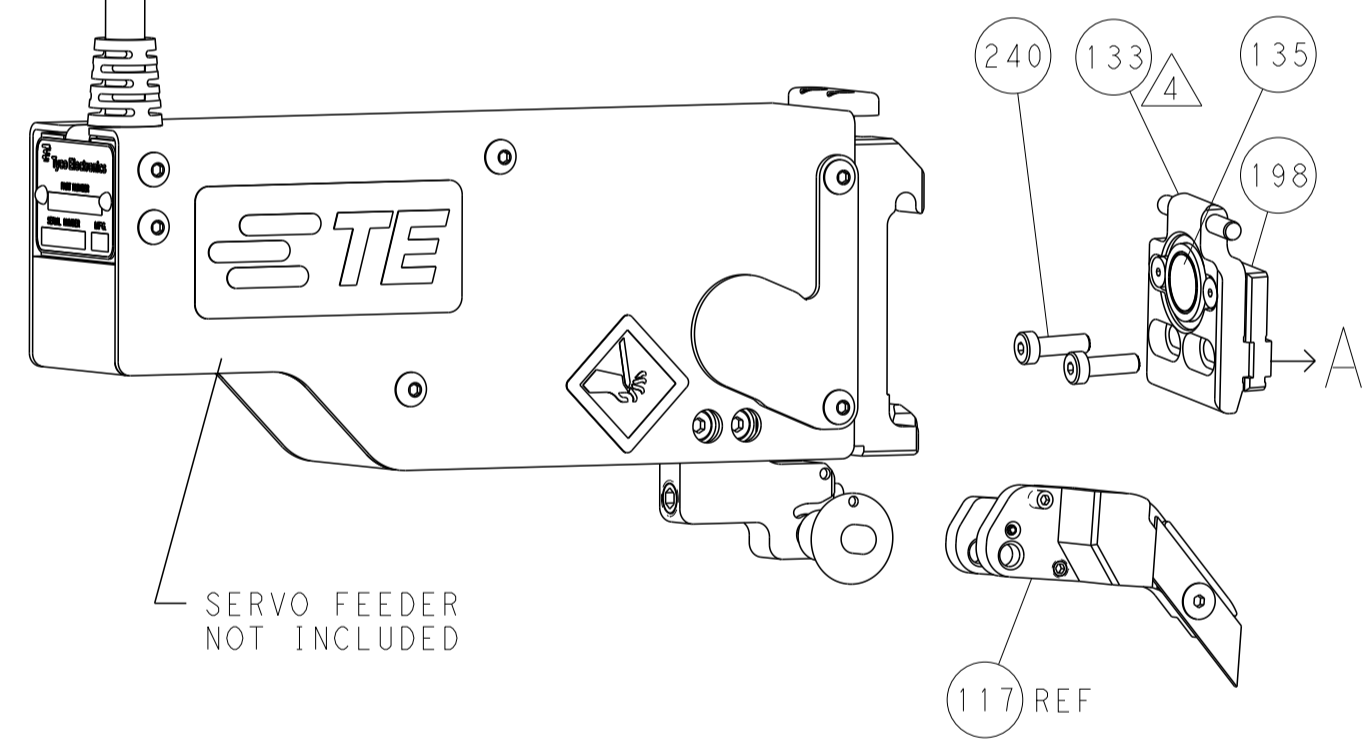
FEED TYPE MECHANICAL



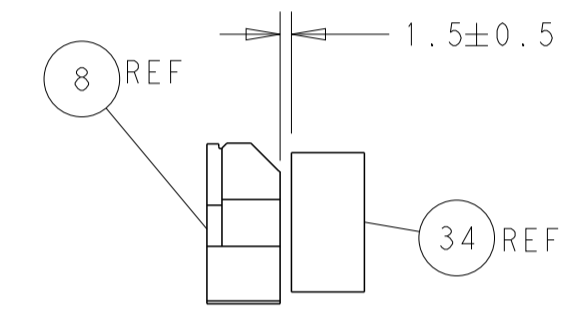
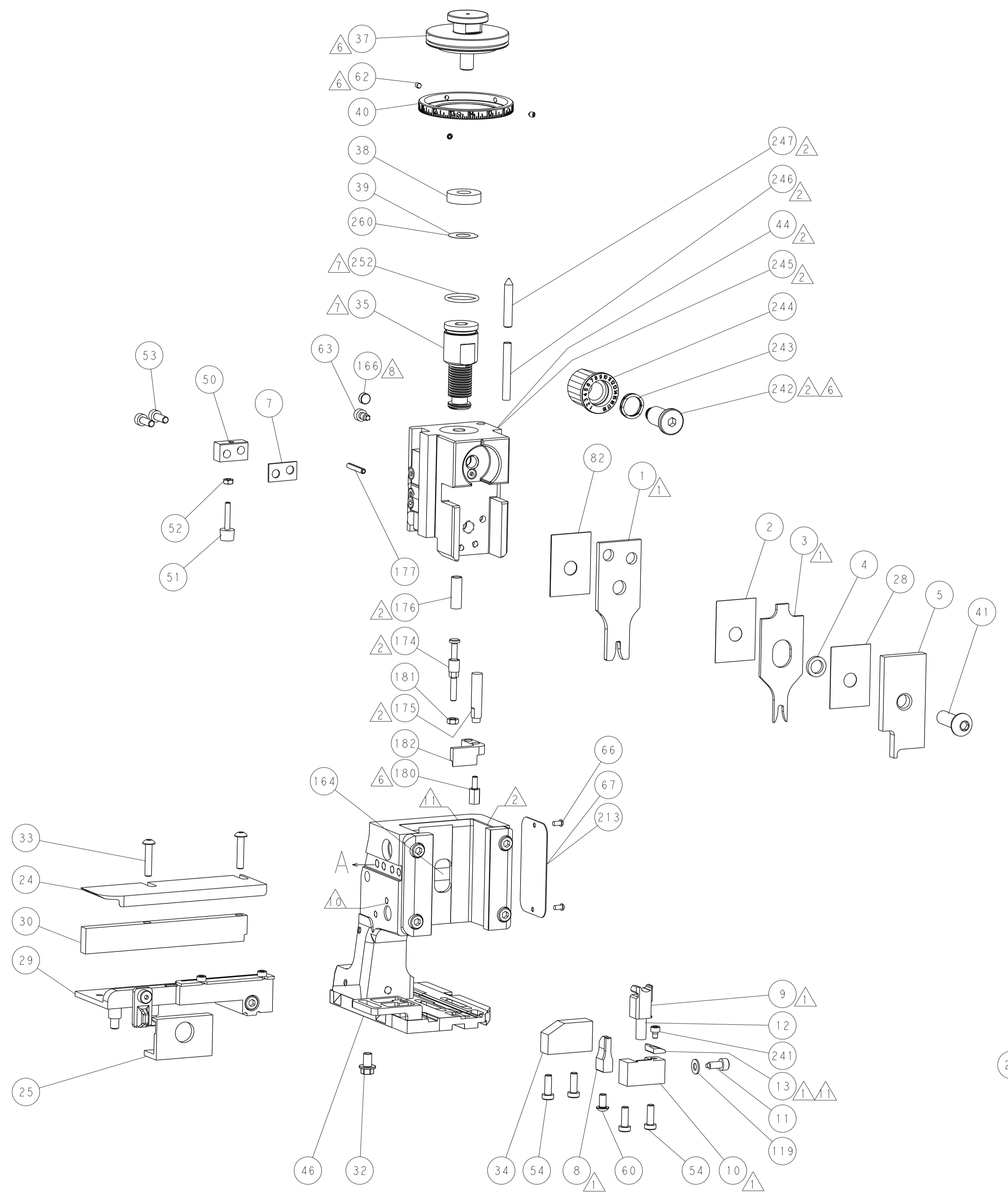
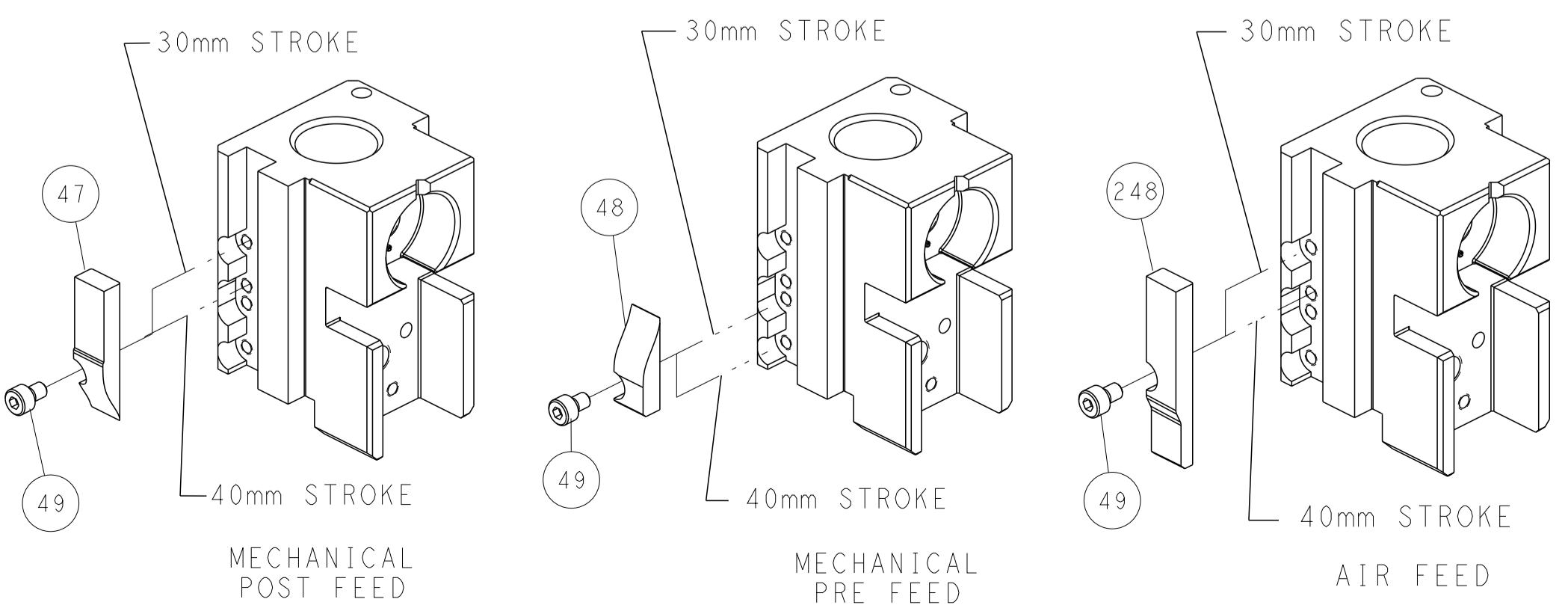
PNEUMATIC



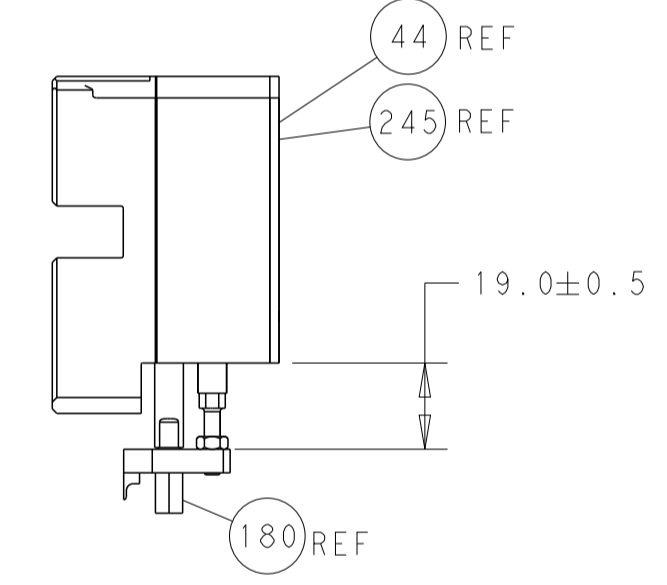
SERVO LATCH PLATE



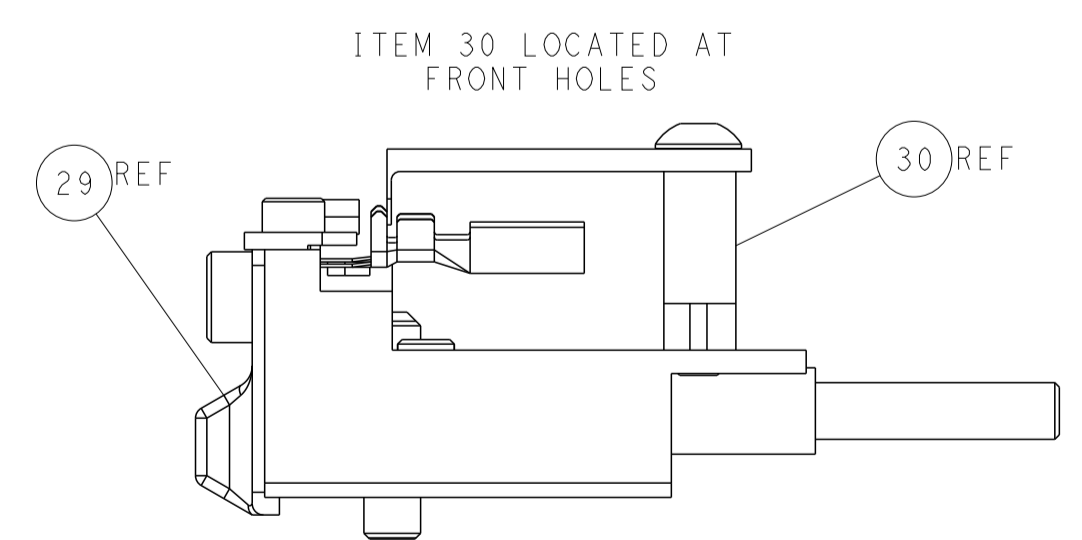
CAM POSITIONS



TERMINAL SUPPORT LOCATION



HOLDDOWN SET-UP



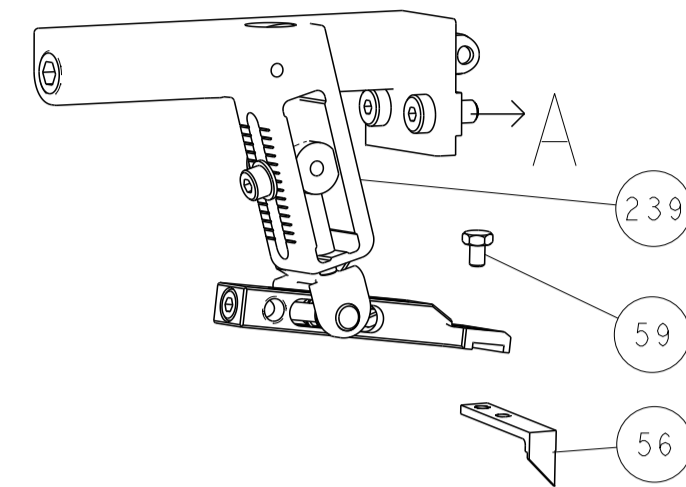
FEED TRACK POSITION GUIDE BY INSULATION BARREL

ATLANTIC VERSION
 Shown on sheets 1 of 4 & 2 of 4
 (Pacific version shown on sheets 3 of 4 & 4 of 4)

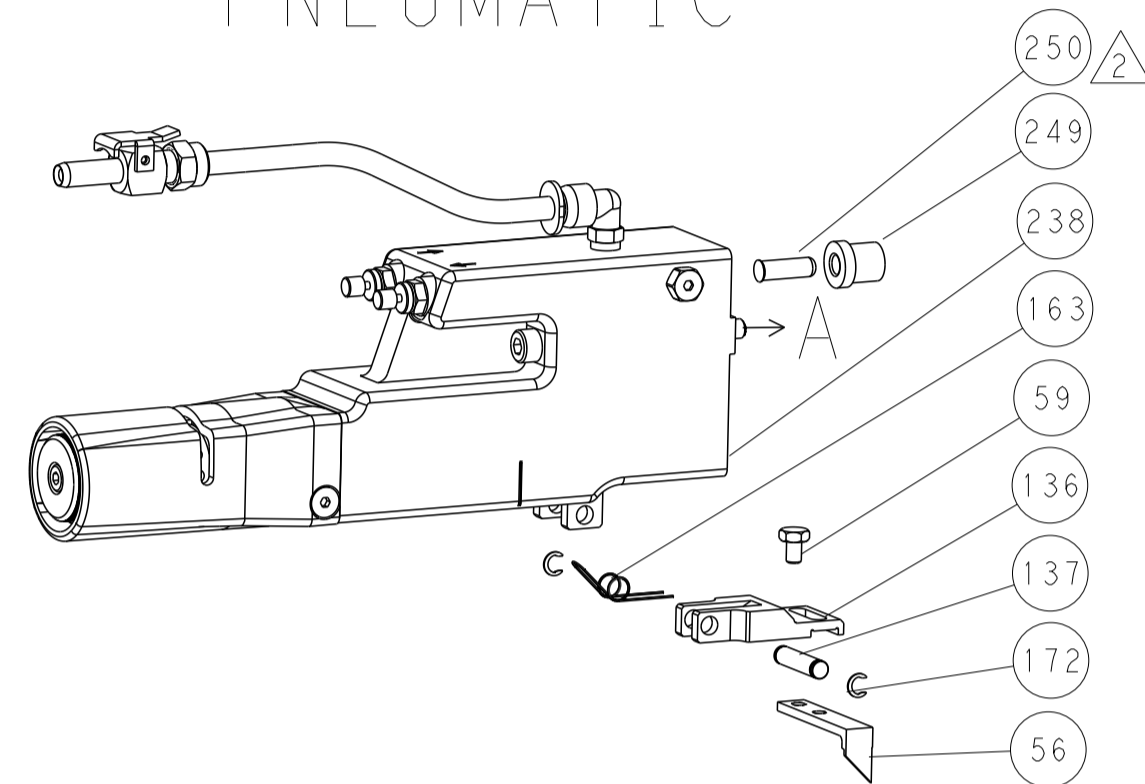
DIMENSIONS: mm 		TOLERANCES UNLESS OTHERWISE SPECIFIED: 0 PLC ± 1 PLC ± 2 PLC ± 3 PLC ± 4 PLC ± ANGLES ± FINISH		DWN Y. YIN 21JAN2014 CHK G. BAILEY 21JAN2014 APVD J. GUO 21JAN2014 PRODUCT SPEC APPLICATION SPEC WEIGHT Customer Accessible Production Drawing		NAME Ocean Side Feed Applicator SIZE CAGE CODE DRAWING NO. A1 00779 C=2266199 RESTRICTED TO	
MATERIAL:		SCALE 1:2		SHEET 2 OF 4		REV B1	

LOC		DIST		REVISIONS			
A	66	P	LTM	DESCRIPTION	DATE	DWN	APVD
-	-	-	-	SEE SHEET 1	-	-	-

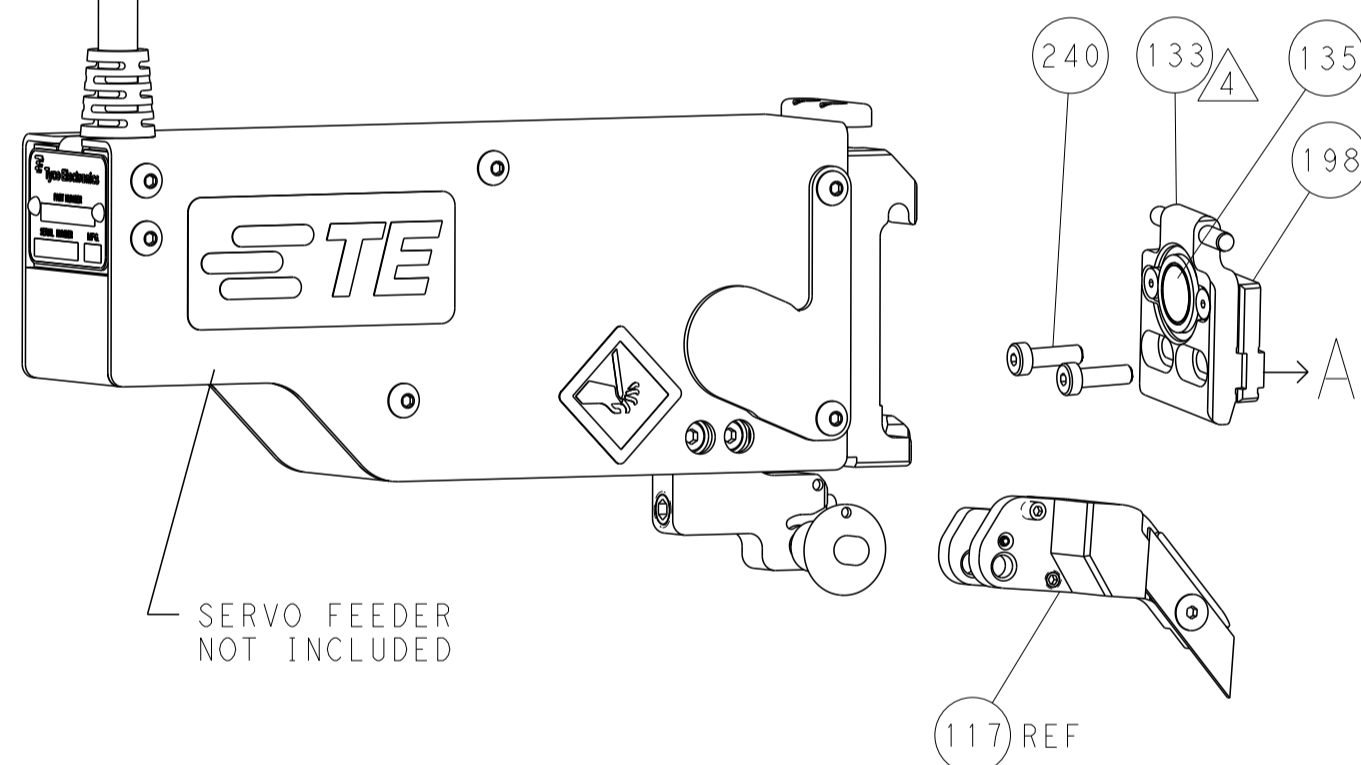
FEED TYPE MECHANICAL



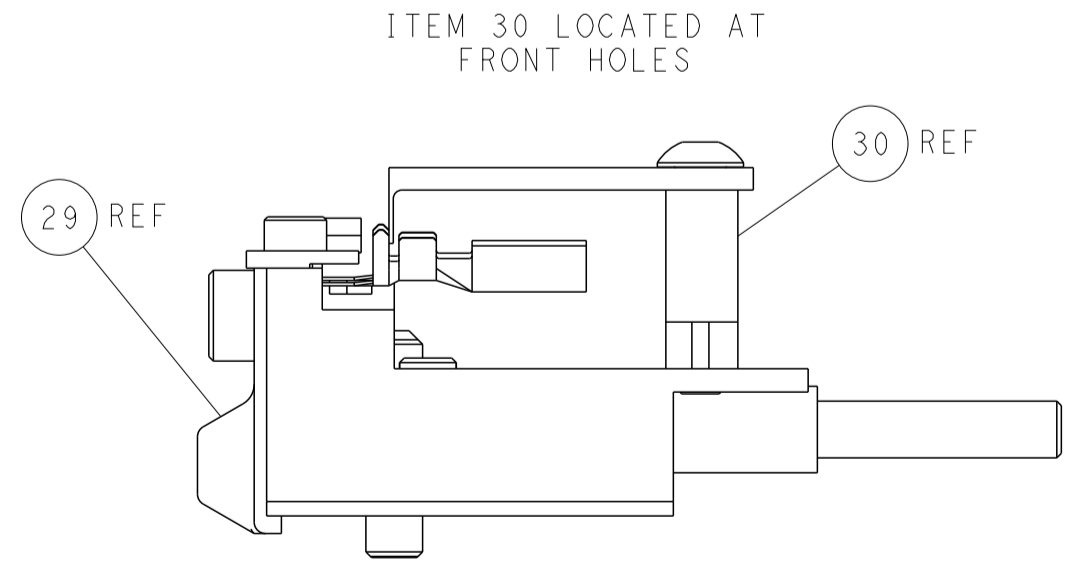
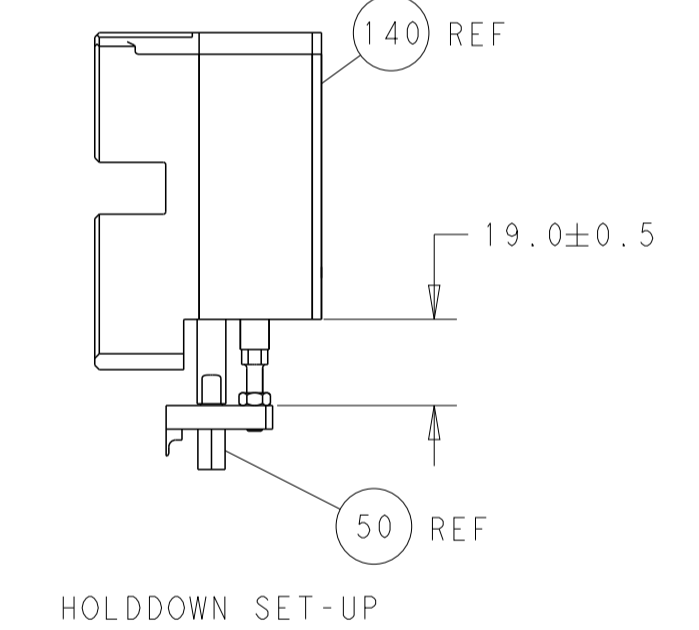
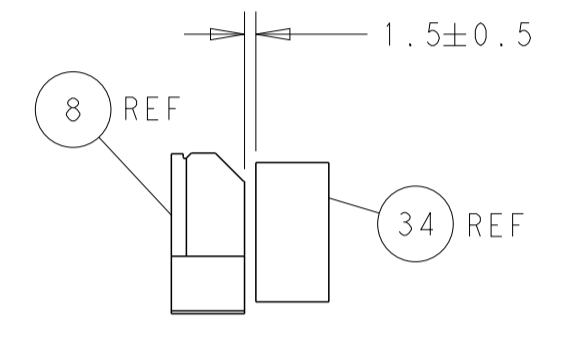
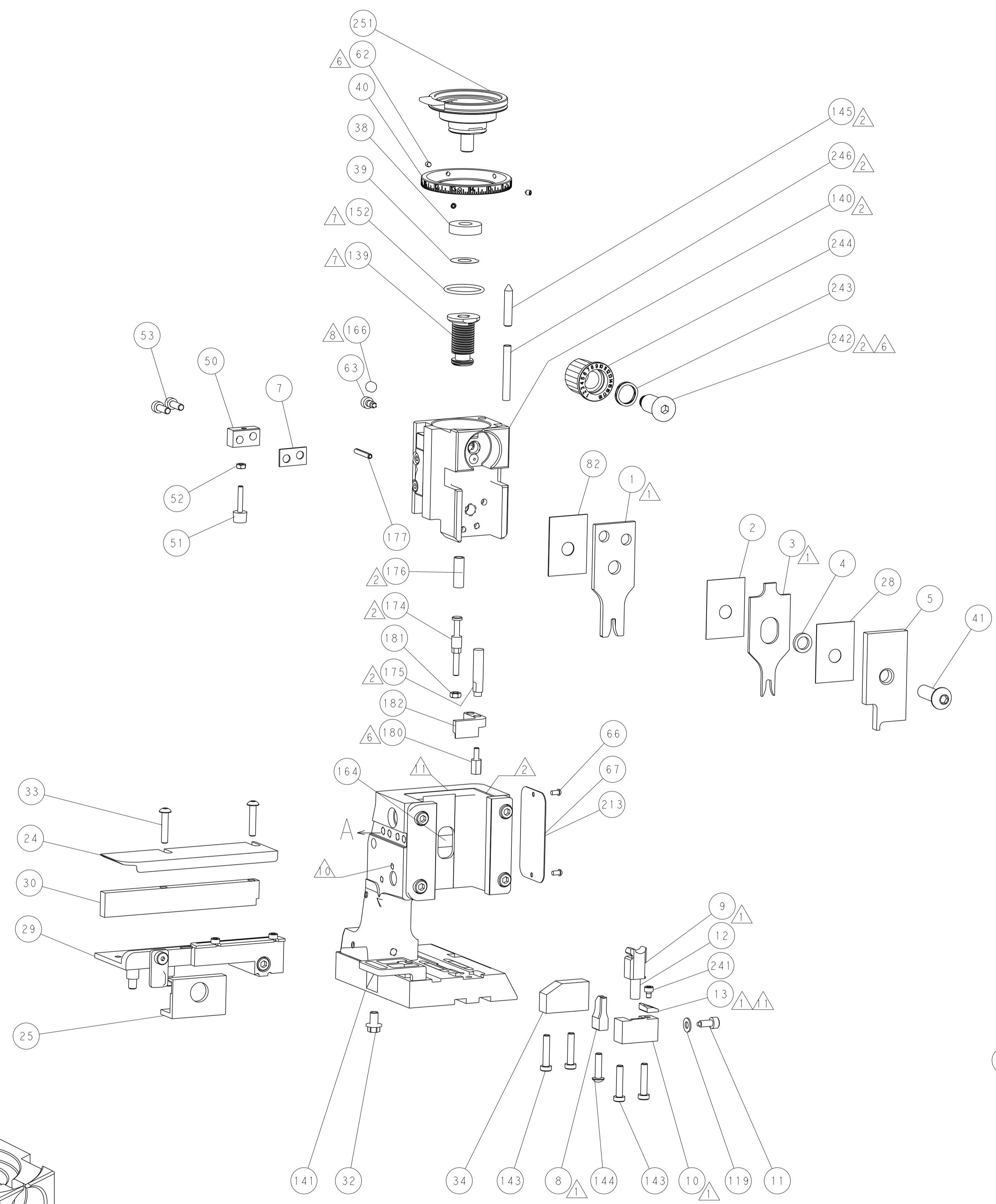
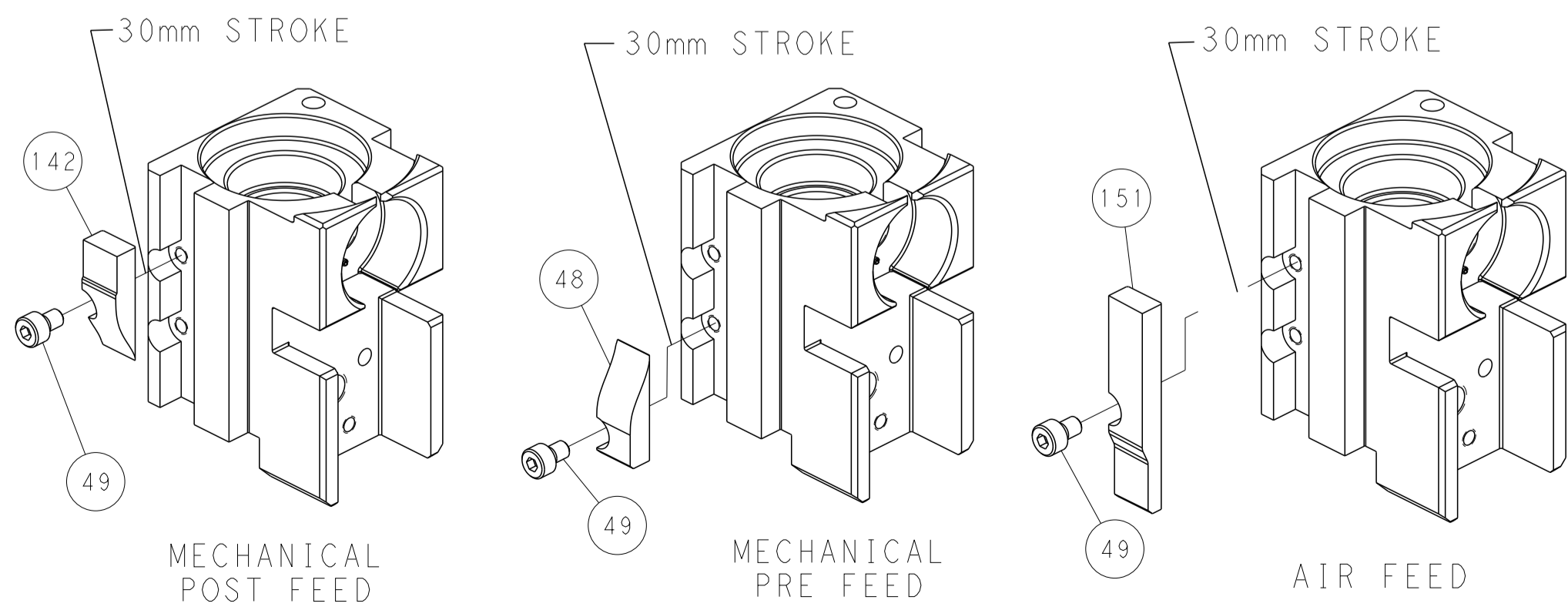
PNEUMATIC



SERVO LATCH PLATE



CAM POSITIONS



PACIFIC VERSION
 Shown on sheets 3 of 4 & 4 of 4
 (Atlantic version shown on sheets 1 of 4 & 2 of 4)

DIMENSIONS:		TOLERANCES UNLESS OTHERWISE SPECIFIED:		DWN Y. YIN 21JAN2014		TE Connectivity	
mm	0 PLC ±	1 PLC ±	2 PLC ±	3 PLC ±	4 PLC ±	5 PLC ±	Harrisburg, PA 17105-3608
MATERIAL:		FINISH:		CHK G. BAILEY 21JAN2014		NAME Ocean Side Feed Applicator	
-		-		APVD H. GUO 21JAN2014		SIZE CAGE CODE DRAWING NO	
-		-		PRODUCT SPEC		RESTRICTED TO	
-		-		APPLICATION SPEC		A1 00779 C=2266199	
-		-		WEIGHT		SCALE 1:2 SHEET 4 OF 4 REV B1	
-		-		Customer Accessible Production Drawing		SHEETS 1 & 2 ARE NOT REQUIRED FOR PACIFIC VERSION	