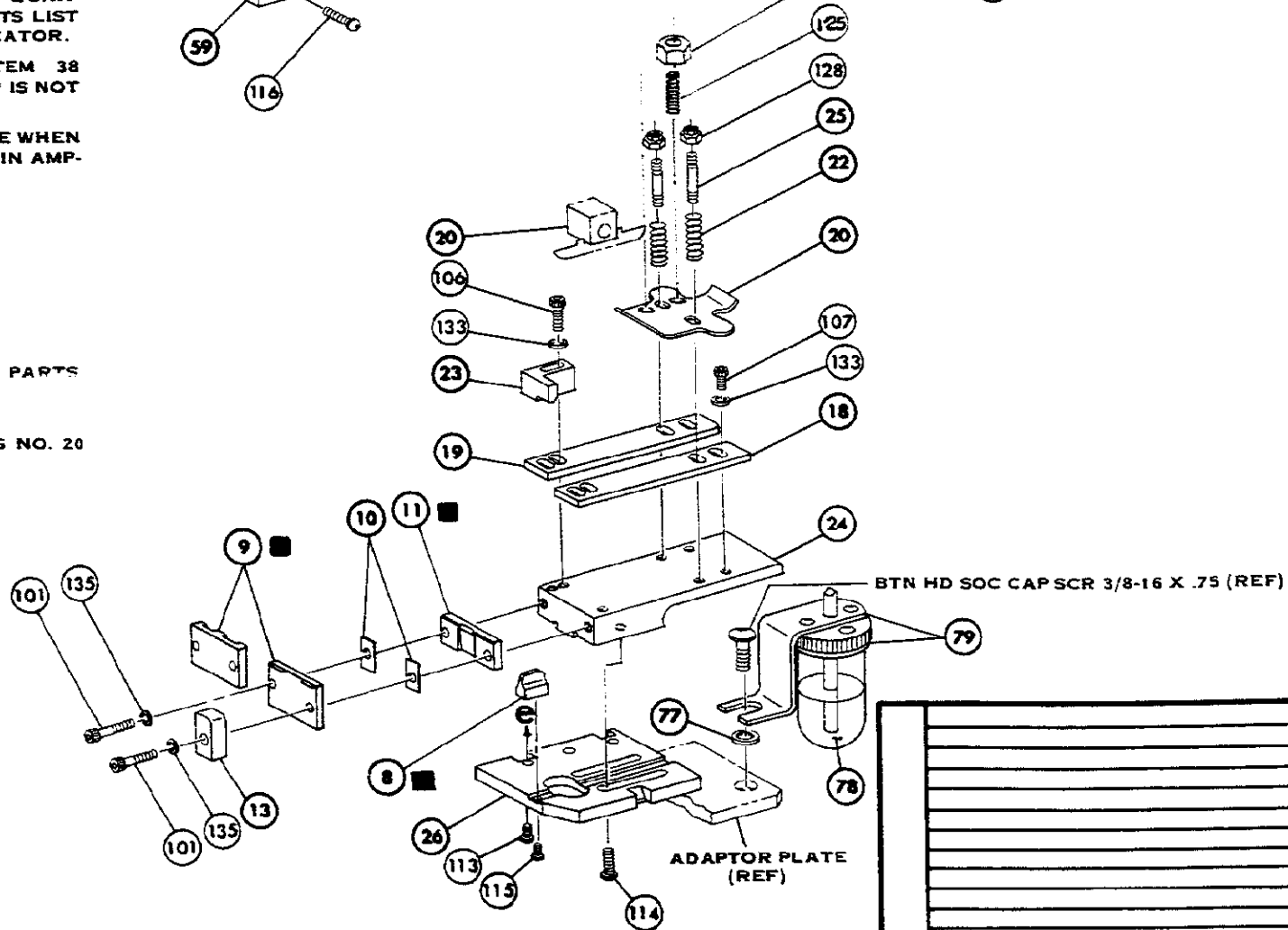


NOTES:

- 1. ONLY THE ITEMS WITH QUANTITIES SPECIFIED ON PARTS LIST ARE USED ON THIS APPLICATOR.
- ⚠ USED IN PLACE OF ITEM 38 WHEN INSULATION CRIMP IS NOT USED.
- ⚠ GUARD MUST BE IN PLACE WHEN OPERATING APPLICATOR IN AMP-O-ELECTRIC PRESS.

KEY:

- RECOMMENDED SPARE PARTS
- ▲ LUBRICATE DAILY USING NO. 20 MACHINE OIL.
- GREASE LIGHTLY.



THIS INFORMATION IS CONFIDENTIAL AND IS DISCLOSED TO YOU ON THE CONDITION THAT YOU WILL NOT DISCLOSE IT TO ANY OTHER PERSON WITHOUT AUTHORIZATION FROM AMP INCORPORATED, HARRISBURG, PENNA.

DIMENSIONS IN INCHES DO NOT SCALE PRINT

*TRADEMARK OF AMP INCORPORATED

REQ.	PART NO.	DESCRIPTION	NO.	REQ.	PART NO.	DESCRIPTION	NO.
			162	1	690517-1	SPACER	71
			161	1	22594-8	HEX. NUT	70
			160	1	240628-1	PLATE, ADJ	69
			159	1	240626-1	SHAFT, PIVOT	68
			158	1	240633-1	BUSHING	67
			157	1	455680-1	LEVER, INTERMEDIATE	66
			156	1	240629-1	BLOCK, PIVOT	65
			155	1	240632-2	SCREW, ADJ	64
			154	1	240659-3	PIN, CAM ROLLER	63
			153	1	240658-1	CAM, ROLLER	62
			152	1	454398-1	ROD, FEED	61
			151				60
			150	1	454220-1	CAP, RAM	59
			149	1	453736-1	HOUSING	58
			148				57
2	21045-3	RING, RETAINING 'C' (.187 DIA) FEED PIN	147				56
			146	1	240624-1	PIN, FEED FINGER	55
			145	1	240635-1	SPRING, FEED FINGER	54
			144	1	240635-1	FINGER, FEED	53
2	5- 21028-1	PIN, SLOT SPG (.12 DIA x .50) FEED ADJ ROD	143	1	240634-3	LEVER, TERMINAL	52
			142				51
1	1- 21030-7	PIN, DOWEL (.187 DIA x 1.50) HOUSING	141				50
1	1- 21030-1	PIN, DOWEL (.187 DIA x .50) LEVER	140	1	690686-1	BOLT, CRIMPER	49
			139	1	690501-5	CAM, POSTFEED 1-1/8 STROKE	48
			138				47
			137				46
1	21899-4	WASH, FLAT (NO. 6) DRAG SPRING	136	1	690191-1	PLUG, NYLON	45
2	21024-5	WASH, LOCK (NO. 10) FEED ADJ PLATE	135	1	255672-1	RAM	44
2	21024-5	WASH, LOCK (NO. 10) FEED ROD GUIDE	134	1	690125-1	WASHER, LAMINATED	43
4	21024-4	WASH, LOCK (NO. 8) STRIP GUIDE	133	1	690124-1	WASHER, RAM	42
2	21024-4	WASH, LOCK (NO. 8) SHEAR BLADE	132			SPACER, DISC	41
2	21018-4	NUT, HEX, MACH (4-40) DRAG, STOCK	131	2	23241-6	BALL, STEEL	40
1	21068-5	NUT, HEX MACH (6-32) FEED ADJ PLATE	130	2	690170-1	SPRING, COMPRESSION	39
			129	1	690142-1	DISC, INSULATION	38
2	21022-2	NUT, HEX SELF-LKG (8-32) DRAG STUDS	128	1	1-690692-3	DISC, WIRE	37
			127	1	22480-5	WASHER, SPRING	36
			126				35
			125				34
1	21009-2	SCR, SKT SET (1/4-20 x .25) NYLOK RAM	124				33
			123				32
1	2- 21003-0	SCR, FLAT HD SOC CAP (6-32 x .50) CAM	122				31
			121				30
1	3- 21064-2	SCR, RDH HD MACH (6-32 x 1.50) FEED ADJ	120				29
			119	1	1-690451-1	SPACER, STRIPPER	28
			118	1	240639-1	STRIPPER	27
2	221002-2	SCR, BTN HD SKT CAP (8-32 x .50) STRIPPER	117	1	455676-1	PLATE, BASE	26
4	2- 21002-9	SCR, BTN HD SKT CAP (10-32 x .75) HSG CAP	116	2	22354-8	DRAG, STUD	25
1	22733-8	SCR, BTN HD SKT CAP (8-32 x .38) NYLOK ANVIL	115	1	255672-1	PLATE, STRIP GUIDE	24
4	3- 21002-3	SCR, BTN HD SKT CAP (1/4-20 x .50) STR GDE PL	114			PLATE, STRIP HOLD	23
3	3- 21002-5	SCR, BTN HD SKT CAP (1/4-20 x .75) BASE PLATE	113	2	4-22281-1	SPRING, DRAG	22
			112		240636-1	LEVER, DRAG	21
			111	1	454177-1	DRAG, STOCK	20
			110	1	2458030-1	GUIDE, STRIP REAR	19
2	23030-1	SCR, SKT HD CAP (6-32 x .25) NYLOK C. P. DISC	109	1	2-458031-1	GUIDE, STRIP FRONT	18
2	2- 21000-8	SCR, SKT HD CAP (8-32 x .62) SHEAR BLADE	108	1	454178-1	GUIDE, FEED ROD	17
3	221000-6	SCR, SKT HD CAP (8-32 x .38) STRIP GUIDE	107	1	4-22284-9	SPRING, FEED RETURN	16
1	221000-6	SCR, SKT HD CAP (8-32 x .38) STRIP GUIDE	106		454665-1	ADAPTOR, DRAG	15
2	3- 21000-7	SCR, SKT HD CAP (10-32 x .75) FD ROD GUIDE	105				14
			104			SPACER, HOLD DOWN	13
			103			SPRING, HOLD DOWN	12
1	3- 21000-4	SCR, SKT HD CAP (10-32 x .38) PIVOT BLK	102	1	240644-1	PLATE, REAR SHEAR	11
2	3- 21000-8	SCR, SKT HD CAP (10-32 x .88) SHEAR PLATES	101	2	1-240645-1	SPACER, SHEAR PLATE	10
REF 455745-1	GUARD, WITH DOOR		80	1	240642-1	PLATE, FRONT SHEAR	9
1	465184-9	LUBRICATOR ASSY	79	1	1-240693-0	ANVIL	8
REF 852931-7	OIL SYNTHETIC		78	1	240651-9	BLADE, SLUG	7
1	454406-1	SPACER, LUBRICATOR BRACKET	77			HOLD DOWN	6
			76	1	2-240641-7	SPACER, SHEAR BLADE	5
			75	1	238009-7	SPACER, TUBULAR, INS CRIMPER	4
			74	1	456135-1	CRIMPER, INSULATION	3
1	458109-1	WASHER, FLAT (SPECIAL)	73	1	455888-8	SPACER, INSULATION	2
2	690603-1	SPRING, ASSIST	72	1	456422-1	CRIMPER, WIRE	1

CRIMPING DATA				THIS APPLICATOR WILL APPLY	
PAC LETTER	CRIMP HEIGHT	WIRE SIZE	WIRE STRIP LENGTH	60485	
A	.115	12			
B	.105	14			
C	NOT USED				
D	NOT USED				
CRIMP	SIZE	TYPE	FEED	PRESS REF.	
	.155	F			
WIRE	.250		0	1.085	5654355
INSULATION	.150-.210		14-12	APPLICATOR INSTRUCTION #3039	
REMARKS					
POST FEED AMP-O-ELECTRIC					
SET UP CASE	LAYOUT NO.		AMP INCORPORATED HARRISBURG, PENNA.		
458635-1	310				
DRAWN	APPROVED				
W. J. WOOD	M. WOOD				
CHECKED	SCALE		REV.		
10-27-75	NONE		A C 687762-2 E		
MINIATURE QUICK CHANGE APPLICATOR					
END-FEED (2115)					

REV	DATE	DESCRIPTION
A	10-27-75	REV ITEM #53
B	11-11-75	REV PER ECU R5309
C	11-11-75	REV PER ECU R5309
D	11-11-75	REV PER ECU R5309
E	11-11-75	REV PER ECU R5309

NO. 687762-2