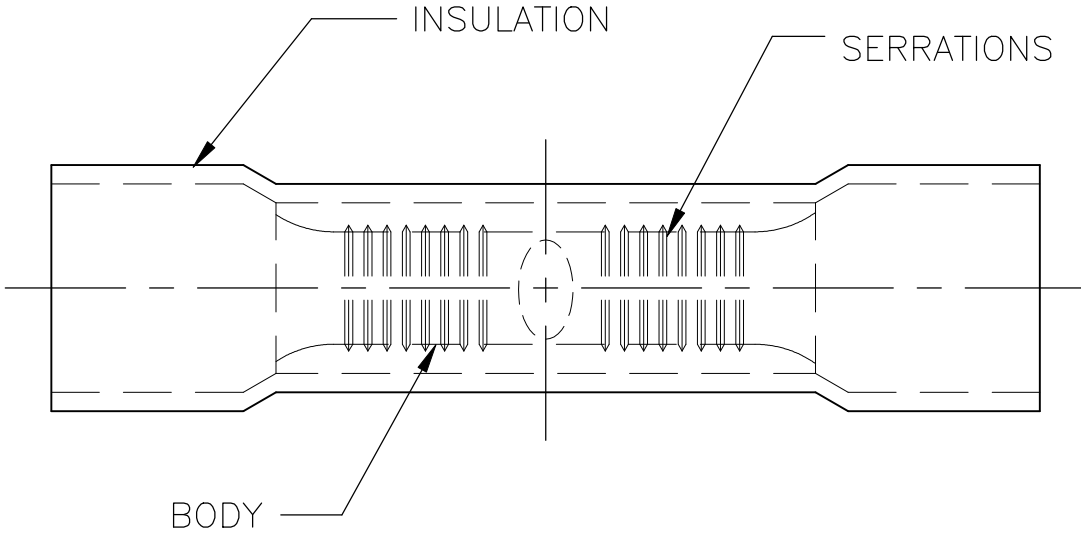


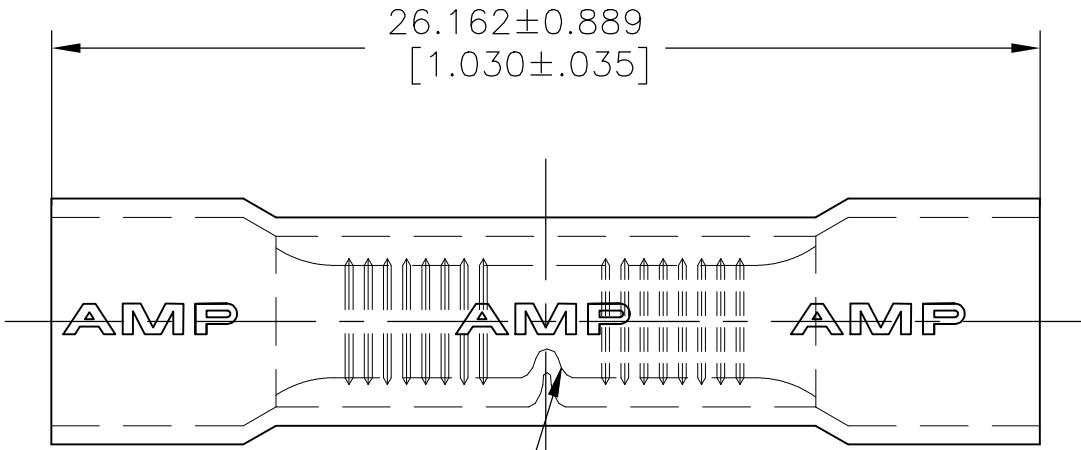
THIS DRAWING IS UNPUBLISHED. RELEASED FOR PUBLICATION
 © COPYRIGHT - By - ALL RIGHTS RESERVED.

REVISIONS					
P	LTR	DESCRIPTION	DATE	DWN	APVD
F1		REVISED PER ECO-11-020548	06FEB12	KH	DR
F2		REVISED PER ECO-17-014338	26MAR2018	RS	DR



E13288 Listed	LR7189 Certified
16-14 AWG SOLID OR STRANDED	16-14 AWG SOLID OR STRANDED

1 FOR 5.461[.215] MAX WIRE INSULATION DIA



2000	TAPE AND REEL	INSULATION: PVC COLOR: BLUE BODY: COPPER PER ASTM B152, ANNEALED TIN PLATE PER ASTM B545	2-35244-1
1000	LOOSE PIECE		35244
QTY	PACKAGE TYPE	MATERIAL & FINISH	PART NO

AMP INCORPORATED CUSTOMER SERVICE SYSTEMS		MAX RECOMMENDED OPERATING TEMPERATURE: 105°C [221°F] MAX
FOR ADDITIONAL PRODUCT INFORMATION OR COPIES OF DRAWINGS AND TECHNICAL DOCUMENTS	PRODUCT INFORMATION CENTER 1-800-522-6752	VOLTAGE RATING: 600V MAX [1000V SIGN'S OR FIXTURES]
FOR APPLICATION TOOLING INFORMATION	TOOLING ASSISTANCE CENTER 1-800-722-1111	WIRE CROSS SECTIONAL AREA RANGE, 1.04-2.62mm²[4,050-5,180] CIR MILS
FOR ORDER ENTRY	1-800-526-5142	

THIS DRAWING IS A CONTROLLED DOCUMENT.	
DIMENSIONS: mm [INCHES]	TOLERANCES UNLESS OTHERWISE SPECIFIED:
	0 PLC ± - 1 PLC ± - 2 PLC ± - 3 PLC ± 0.127[.005] 4 PLC ± - ANGLES ± -
MATERIAL -	FINISH -

DWN KIRAN HOLAL 06FEB12	TE Connectivity Ltd.
CHK ROHDE DANIEL 06FEB12	
APVD ROHDE DANIEL 06FEB12	
PRODUCT SPEC UL 486 A-B	
APPLICATION SPEC 114-2161	NAME WIRE SPLICE PLASTI-GRIP,BUTT WIRE SIZE 16-14 AWG
WEIGHT	SIZE A3
CUSTOMER DRAWING	CAGE CODE 00779
SCALE 5:1	DRAWING NO C-35244
SHEET 1 OF 1	RESTRICTED TO -
REV F2	