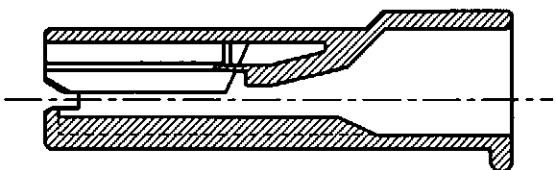
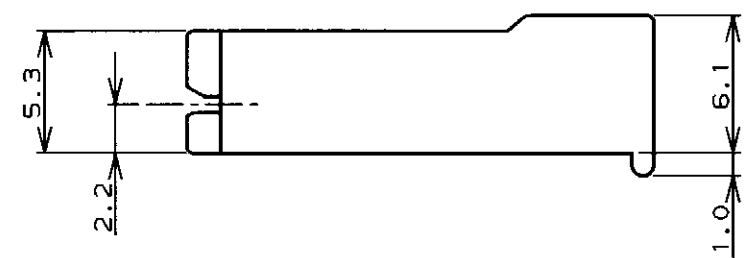
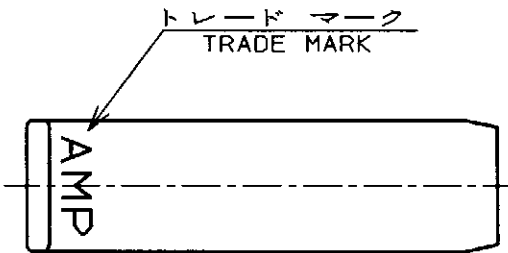
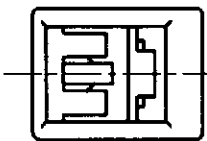
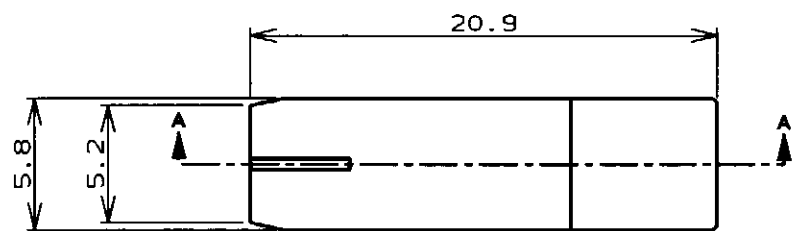
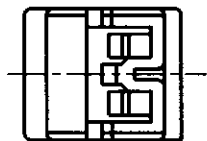
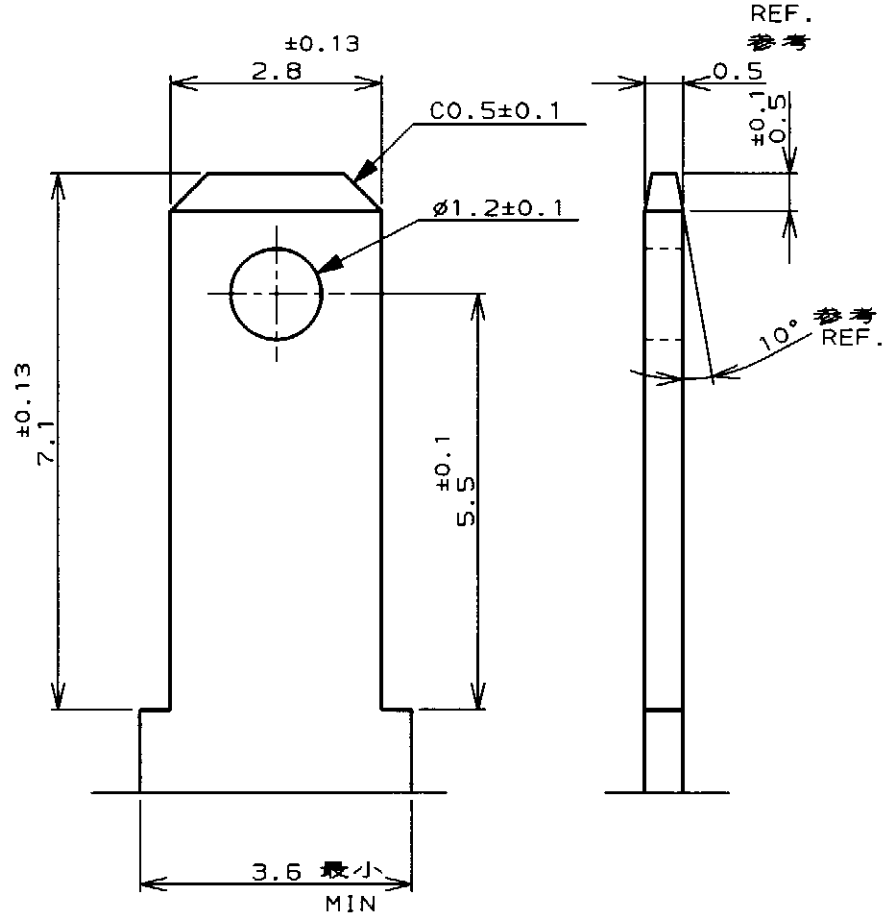


LOC	DIST	REVISIONS						
		P	LTR	DESCRIPTION	ECN	DATE	DWN	APVD
J	---		0	RELEASED	FJ00-0400-97	4. APR. '97	M. S	M. S
			A	REVISED	FJ00-0952-97	26 JUN '97	あさ	あさ



断面 "A" - "A" SECT.



推奨タブ図 APPLICABLE TAB DIMENSIONS

自然色 (NATURAL)	353251-1
色調 (COLOR)	型番 (P/N)

<p>THIS DRAWING IS A CONTROLLED DOCUMENT FOR AMP INCORPORATED. IT IS SUBJECT TO CHANGE AND THE CONTROLLING ENGINEERING ORGANIZATION SHOULD BE CONTACTED FOR THE LATEST REVISION.</p>		<p>OWN M. SUZUKI 4. APR. '97</p>		<p>WIRE RANGE 総合電線断面積</p>		<p>INSULATION DIA 被覆外径</p>	
<p>DIMENSIONS: 単位: 概 mm</p>		<p>TOLERANCES UNLESS OTHERWISE SPECIFIED</p> <p>一般公差</p> <p>10mm ±0.2</p> <p>30mm ±0.25</p> <p>100mm ±0.3</p> <p>ANGLE: ±0.3°</p>		<p>CHK M. SHINDO 4. APR. '97</p>		<p>AMP 日本アール・エム・シー株式会社 Kawasaki, Japan</p>	
<p>MATERIAL 材料 6/6ナイロン (UL94V-0) 6/6 NYLON</p>		<p>FINISH 仕上</p>		<p>APVD M. SHINDO 4. APR. '97</p>		<p>NAME 名称 110 シリーズ ポジティブ ロック EX-III 1極 ハウジング</p>	
<p>PRODUCT SPEC 108-5530</p>		<p>APPLICATION SPEC 取付適用規格 114-5229</p>		<p>SIZE A3</p>		<p>CAGE CODE 00779</p>	
<p>WEIGHT</p>		<p>CUSTOMER DRAWING</p>		<p>DRAWING NO 番号 C=353251</p>		<p>SCALE 尺度</p>	
<p>SHEET 1 OF 1</p>		<p>REV A</p>		<p>SCALE 尺度</p>		<p>SHEET 1 OF 1</p>	