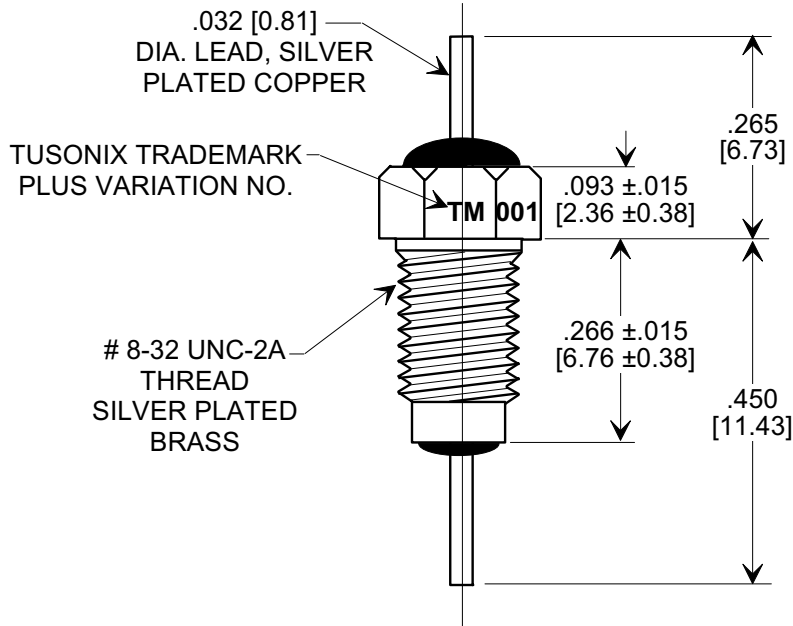
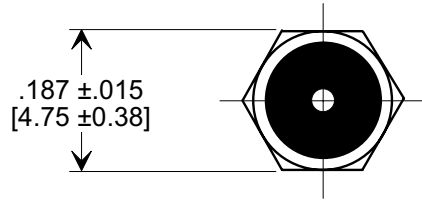
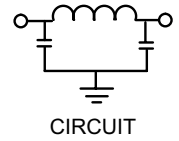
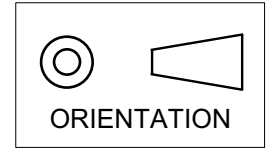


MARKETING SALES DRAWING

DIMENSIONS IN INCHES - DO NOT SCALE THIS DRAWING
 DIMENSIONS IN METRIC - []

Electrical Testing
 per Tusonix standard
 test plans and Mil-Std-202
 Test Methods.



NOTES:

- TUSONIX STANDARD PART NUMBER: 4251-001.
 TUSONIX RoHS COMPLIANT PART NUMBER: 4251-001 LF.
 CUSTOMER MUST SPECIFY STANDARD OR RoHS PART NUMBER WHEN ORDERING.
- PART MARKING: TRADEMARK AND VARIATION NUMBER ON HEX FLATS.
 STANDARD PART: BLACK INK. RoHS PART: GREEN INK.
- SUPPLIED WITH SILVER PLATED COPPER ALLOY HEX NUT AND INTERNAL TOOTH LOCK WASHER.

15,000	50 VDC	10 GΩ	250 VDC	10 A	5	9	18	45	65	70	70
MIN. CAP.(pf)	+125 °C DC WORKING VOLTAGE	I.R. MIN. @ 100 VDC	DWV	CURRENT	1 MHz	3 MHz	10 MHz	30 MHz	100 MHz	300 MHz	1GHz
MINIMUM NO LOAD INSERTION LOSS (dB) AT 25°C PER MIL-STD-220											

X-2015 Rev-0	REVISION RECORD				TUSONIX TUCSON, ARIZONA	--TOLERANCES-- Unless Otherwise Specified		Title MULTI LAYER BUSHING STYLE EMI FILTER			
	Original Release C.O. 6611	0	HDIM'S REVISED .81 WAS .812 6.7 WAS 6.75. TITLE CHGD. E.C. 5-26-92			DECIMAL ± .031 [0.79]					
	6667	1	RDN TO COMP FMT. S.M. 06-03-02			ANGLES ±		Drawn S. M. 02-28-02		Scale 4 X	
	20020528-3-02	2	DWV 250 WAS 125. S.M. 09-22-03			Approved T.C. 02-58-02		A		4251-001	
20030922-5-03	3	ADDED NOTES 1-3. S.M. 10-06-05									
20050927-7-03	4										