

THIS DRAWING IS UNPUBLISHED. RELEASED FOR PUBLICATION

BY TYCO ELECTRONICS CORPORATION, ALL RIGHTS RESERVED.

PART NUMBER	REV	TERMINATOR	FEED TYPE	DESCRIPTION
1530578-1	A	LEADMAKER	MECH POST FEED	CUTS CARRIER
1530578-2	A	BENCH	MECH PRE FEED	CUTS CARRIER
1530578-6	A	LEADMAKER	MECH POST FEED	CONTINUOUS CARRIER
7-1530578-1	A	LEADMAKER	MECH POST FEED	-1 AND SPARE PARTS
7-1530578-2	A	BENCH	MECH PRE FEED	-2 AND SPARE PARTS
7-1530578-6	A	LEADMAKER	MECH POST FEED	-6 AND SPARE PARTS
7-1530578-7	A	-	-	SPARE PARTS KIT

CRIMP DATA

TE TERMINAL TE CRIMP SPECS

TERMINAL NAME: PIN, UNIVERSAL MATE-N-LOK

CRIMP	SIZE	TYPE	RANGE
WIRE	2.29 [.090 IN]	F	20-14 AWG
INSUL	3.30 [.130 IN]	F	∅1.52 - 3.30 [.060-.130 IN]

WIRE STRIP LENGTH 3.99-4.75 [.157-.187 IN]

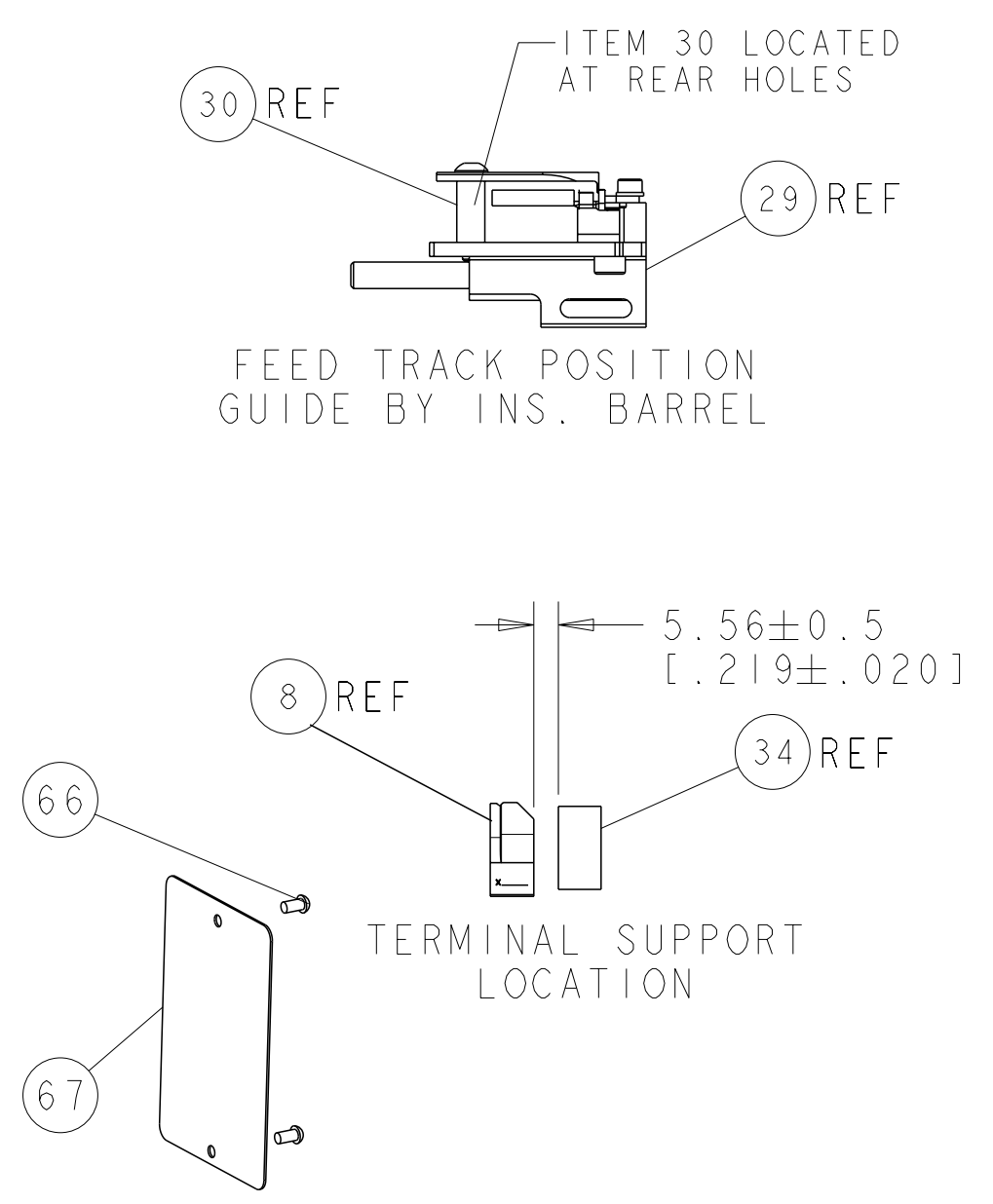
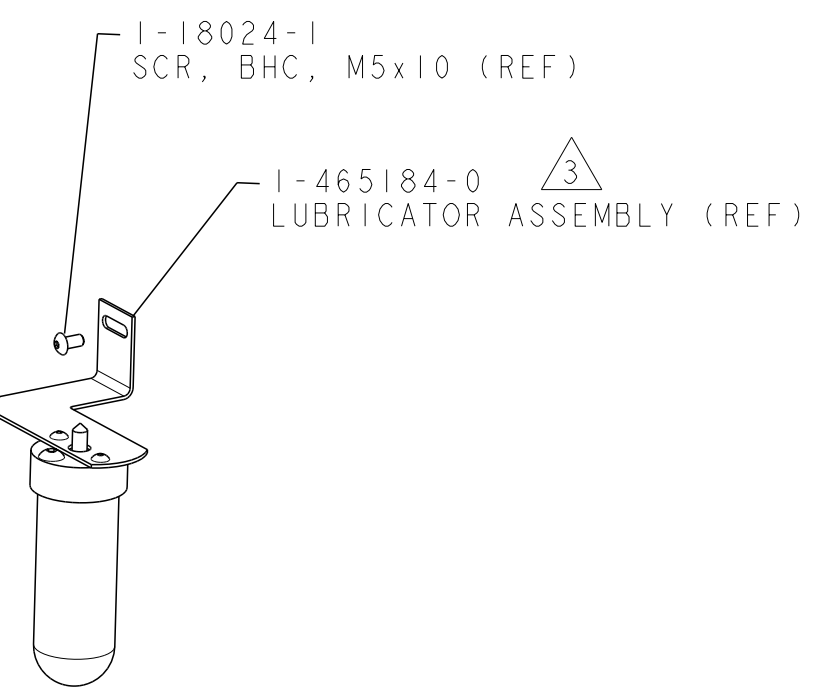
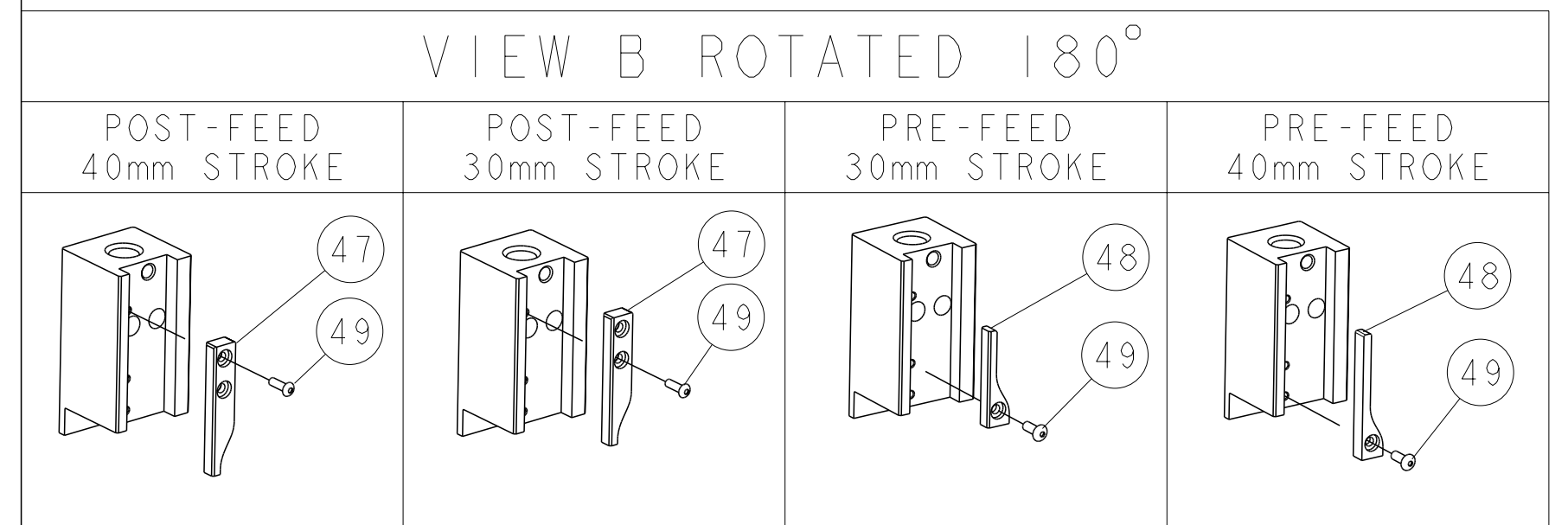
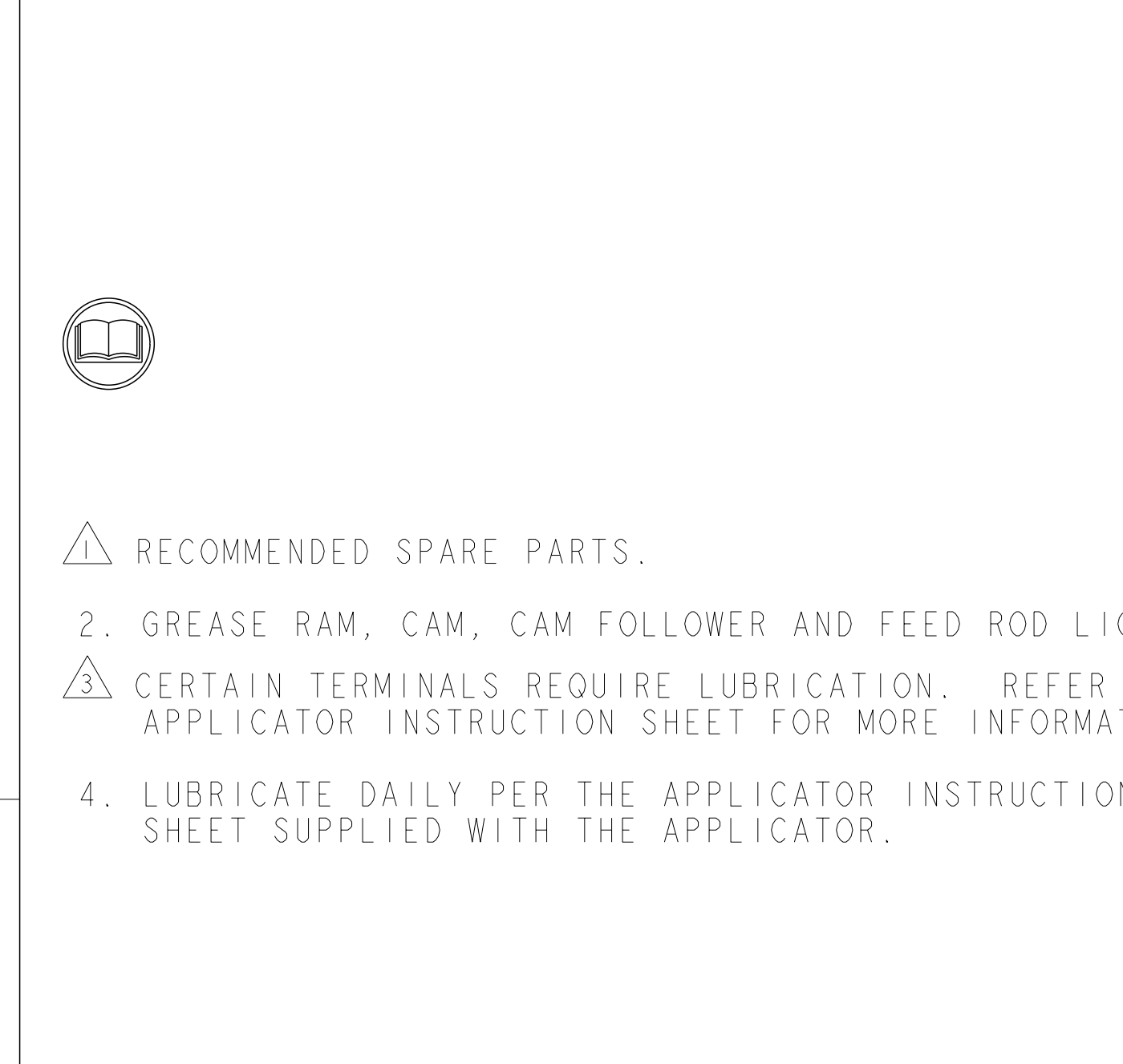
APPL INSTRUCTIONS 408-8322 & 408-8490

TERMINAL APPL SPEC 114-1043 FEED 12.70 [.500 IN]

TERMINALS APPLIED

770007	770008	770193
-	-	-
-	-	-
-	-	-

WIRE SIZE	CRIMP HEIGHT *	REF SETTING
14AWG	1.75 ±0.05 [.069 ±.002 IN]	A-9
16AWG	1.50 ±0.05 [.059 ±.002 IN]	C-7
18AWG	1.32 ±0.05 [.052 ±.002 IN]	E-0
20AWG	1.19 ±0.05 [.047 ±.002 IN]	F-0



SET UP GAGE 458637-3

LOC	DIST	DESCRIPTION	DATE	BY	APP'D
A	66	RELEASED	12DEC2011	KS	TE

QTY	REV	DESCRIPTION	ITEM NO	
-	1	993111-8	PIN, SLOTTED SPRING 3.0 X 12.0	177
-	2	3-22280-7	SPRING, COMPRESSION	176
-	1	1752353-1	GUIDE PIN, HOLDDOWN	175
-	1	1901680-1	GUIDE PIN, HOLDDOWN	174
-	1	1490525-3	DEPRESSOR, WIRE	73
-	1	1338705-3	DOCUMENTATION PACKAGE	71
-	2	2-23147-2	SPRING, COMPRESSION	70
-	1	1490524-1	DEPRESSOR, SPACER	69
-	1	461264-5	PLATE, IDENTIFICATION	67
-	2	21017-2	SCREW, DRIVE	66
-	1	1424350-1	HOLDER, PIN, WIRED	65
-	1	3-18031-0	SCR, SET, CUP POINT M6 X 6.0	63
-	2	2-18032-5	SCR, SET, FLT POINT M5 X 20.0	61
-	1	18024-7	SCR, BTN SKT HD CAP (M4 X 10.0)	60
-	1	5-18022-2	SCR, HEX HD CAP M4 X 8.0	59
-	1	1338685-1	PAWL, FEED	56
-	4	18024-8	SCR, BTN SKT HD CAP (M4 X 12.0)	54
-	1	1-18030-0	NUT, HEX, REG M3.5	52
-	1	1901681-1	HOLDDOWN, TERMINAL	51
-	1	2-1752354-8	STANDOFF, HOLD-DOWN	50
-	1	18024-3	SCR, BTN SKT HD CAP (M3 X 10.0)	49
-	1	1338675-1	CAM, UNIVERSAL PRE FEED	48
-	1	1338676-1	CAM, UNIVERSAL POST-FEED	47
-	1	1320999-3	APPLICATOR SUBASSEMBLY, HDI	46
-	1	690191-1	PLUG, NYLON	45
-	1	1633724-1	RAM, (SIDE FEED)	44
-	1	2-18024-6	SCR, BTN SKT HD CAP (M8 X 25.0)	41
-	1	690125-1	SHIM SUB-ASSY	39
-	1	469367-1	SHIM	38
-	1	879103-2	FINE ADJUST HEAD ASSEMBLY	37
-	1	1-1752356-8	SUPPORT, TERMINAL	34
-	2	1-18024-0	SCR, BTN SKT HD CAP (M4 X 20.0)	33
-	1	18027-2	WASHER, FLAT, REG M4	32
-	1	1-18023-2	SCR, SKT HD CAP M4 X 12.0	31
-	1	1320908-6	SPACER, STRIP GUIDE	30
-	1	1633073-1	STRIP GUIDE ASSEMBLY	29
-	1	1-455888-4	SPACER, CRIMPER	28
-	2	1-22284-0	SPRING, COMPRESSION	27
-	1	356835-1	LEVER, DRAG RELEASE	26
-	1	240792-1	DRAG, TERMINAL	25
-	1	1320928-5	PLATE, STRIP GUIDE	24
-	1	980371-4	SCR, SKT HD SHLDR 5.0 DIA X 6.0	23
-	1	690472-2	STRIPPER	22
-	1	1-18023-1	SCR, SKT HD CAP M4 X 10.0	21
-	2	18025-2	WASHER, SPRG LOCK, REG M4	20
-	1	690472-1	STRIPPER	19
-	1	1338684-1	SHEAR HOLDER, FRONT	13
-	1	3-22280-3	SPRING, COMPRESSION	12
-	1	356885-5	STOP, SHEAR	11
-	1	1-1320921-0	SHEAR HOLDER, FRONT, CUT	10
-	1	462006-6	FLOATING SHEAR, FRONT	9
-	1	2-1333205-6	ANVIL, COMBINATION	8
-	-	-	-	7
-	-	-	-	6
-	1	2-455889-0	DEPRESSOR, SHEAR	5
-	1	238011-7	BLOCK, CRIMPER SPACER	4
1	2	456134-5	CRIMPER, INSULATION F PREMIUM	3
1	2	3-456406-3	CRIMPER, WIRE PREMIUM	1

* WARNING

ON INSTALLATION, SET WIRE DISC TO LARGEST WIRE SIZE SETTING. USE OF SETTINGS BELOW MIN. REQUIRED CRIMP HEIGHT SETTING WILL CAUSE DAMAGE TO CRIMP TOOLING.