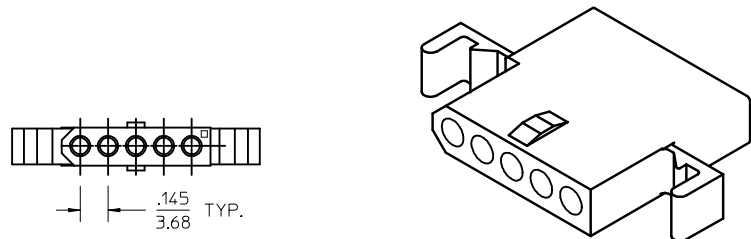
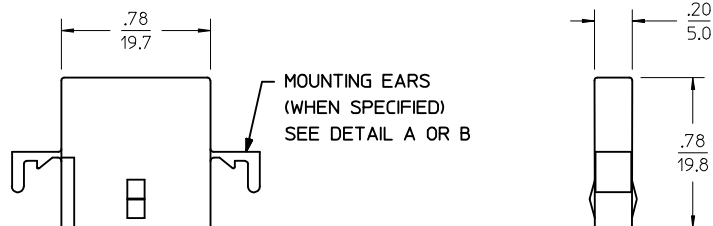
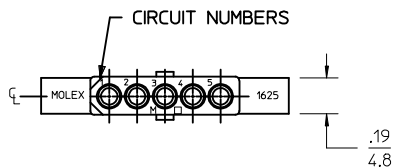
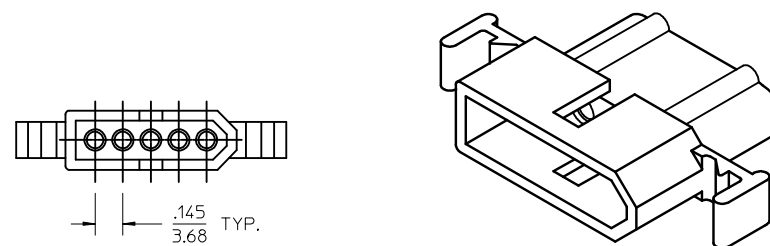
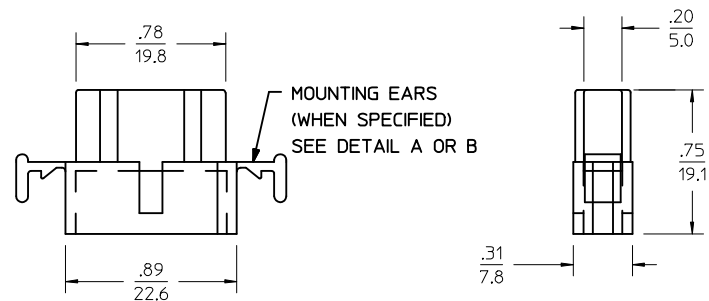
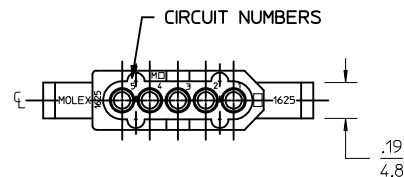


RECEPTACLE



RECEPTACLE HOUSING
SHOWN WITH STANDARD EARS

PLUG



PLUG HOUSING
SHOWN WITH STANDARD EARS

PK SPEC EC NO: UCP2015-0466 DRAWN: JDOX CHKD: MKIPPER APPR: FSMITH	DESCRIPTION 2014/08/06 2014/08/06 2014/08/14	QUALITY SYMBOLS	GENERAL TOLERANCES (UNLESS SPECIFIED)	DIMENSION STYLE IN/MM	SCALE 2:1	DESIGN UNITS INCH	THIRD ANGLE PROJECTION																													
		<ul style="list-style-type: none"> ▽=0 ▽=0 ▽=0 	<table border="1"> <thead> <tr> <th></th> <th>mm</th> <th>INCH</th> </tr> </thead> <tbody> <tr> <td>4 PLACES</td> <td>± .010</td> <td>± .004</td> </tr> <tr> <td>3 PLACES</td> <td>± .010</td> <td>± .004</td> </tr> <tr> <td>2 PLACES</td> <td>± 0.25</td> <td>± .01</td> </tr> <tr> <td>1 PLACE</td> <td>± 0.35</td> <td>± .014</td> </tr> <tr> <td>0 PLACE</td> <td>± .010</td> <td>± .004</td> </tr> </tbody> </table>		mm	INCH	4 PLACES	± .010	± .004	3 PLACES	± .010	± .004	2 PLACES	± 0.25	± .01	1 PLACE	± 0.35	± .014	0 PLACE	± .010	± .004	<table border="1"> <thead> <tr> <th>DRAWN BY</th> <th>DATE</th> </tr> </thead> <tbody> <tr> <td>JDOX</td> <td>2014/08/06</td> </tr> <tr> <th>CHECKED BY</th> <th>DATE</th> </tr> <tr> <td>MKIPPER</td> <td>2014/08/06</td> </tr> <tr> <th>APPROVED BY</th> <th>DATE</th> </tr> <tr> <td>FSMITH</td> <td>2014/08/14</td> </tr> </tbody> </table>	DRAWN BY	DATE	JDOX	2014/08/06	CHECKED BY	DATE	MKIPPER	2014/08/06	APPROVED BY	DATE	FSMITH	2014/08/14	TITLE .062/(157) HOUSINGS PLUG & RECEPTACLE 5 CIRCUIT .145/(3.68)	
	mm	INCH																																		
4 PLACES	± .010	± .004																																		
3 PLACES	± .010	± .004																																		
2 PLACES	± 0.25	± .01																																		
1 PLACE	± 0.35	± .014																																		
0 PLACE	± .010	± .004																																		
DRAWN BY	DATE																																			
JDOX	2014/08/06																																			
CHECKED BY	DATE																																			
MKIPPER	2014/08/06																																			
APPROVED BY	DATE																																			
FSMITH	2014/08/14																																			
ANGULAR ±1/2°	MATERIAL NO. SEE CHART		THIS DRAWING CONTAINS INFORMATION THAT IS PROPRIETARY TO MOLEX INCORPORATED AND SHOULD NOT BE USED WITHOUT WRITTEN PERMISSION																																	

PLUG		RECEPTACLE	
PART NO.	ENG. NO.	PART NO.	ENG. NO.
03-06-2054	1625-5P	03-06-1055	1625-5R
03-06-2055	1625-5P1	03-06-1056	1625-5R1
03-06-7054	1625-5PBK	03-06-6055	1625-5RBK
03-06-7055	1625-5P1BK	NOT TOOLED	1625-5R2

LEGEND:

1625-5****

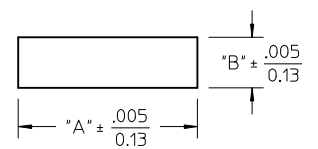
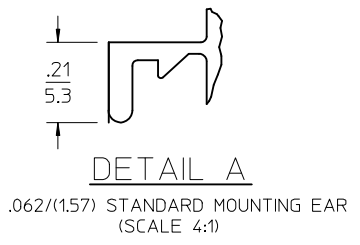
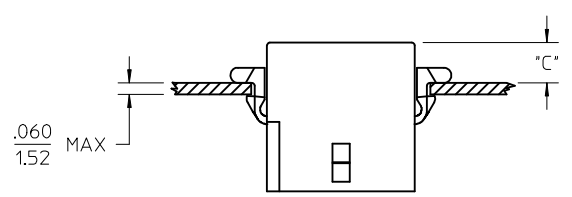
CIRCUIT SIZE

P = PLUG
R = RECEPTACLE

BLANK = WITH STANDARD EARS
1 = WITHOUT EARS
2 = WITH PREBENT EARS

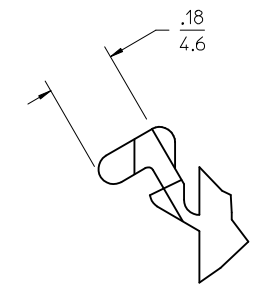
COLOR:

BLANK = NATURAL COLOR
AM = AMBER BK = BLACK BU = BLUE
BN = BROWN GY = GRAY GN = GREEN
OR = ORANGE RD = RED YW = YELLOW



RECOMMENDED PANEL OPENING

HOUSING	DIM. "A"	DIM. "B"	"C" PREBENT EAR	"C" STANDARD EAR
PLUG	1.044/(26.52)	.318/(8.08)	.19/(4.8)	.18/(4.6)
RECEPT.	.940/(23.88)	.265/(6.73)	.21/(5.3)	.20/(5.1)



- NOTES:
1. MATERIAL: NYLON 6/6, UL94V-2, COLOR: SEE LEGEND.
 2. FINISH: NONE.
 3. MOLEX PRODUCT SPEC PS-02-06 APPLIES.
 4. PACKAGING SPECIFICATION: PK-1625-003.
 5. ACCEPTS MOLEX .062 SERIES TERMINALS.
 6. PARTS CONFORM TO CLASS B REQUIREMENTS OF COSMETIC SPECIFICATION PS-45499-002.

SEE SHEET 1 EC NO: UCP2015-0466 DRWN: JDOX CHKD: MKIPPER APPR: FSMITH	2014/08/06 2014/08/06 2014/08/14	QUALITY SYMBOLS ▽=0 ▽=0 ▽=0	GENERAL TOLERANCES (UNLESS SPECIFIED)		DIMENSION STYLE IN/MM		SCALE 2:1	DESIGN UNITS INCH	THIRD ANGLE PROJECTION		
					mm	INCH	DRAWN BY JDOX	DATE 2014/08/06	TITLE .062/(1.57) HOUSINGS PLUG & RECEPTACLE 5 CIRCUIT .145/(3.68)		
					4 PLACES ± ---	± ---	CHECKED BY MKIPPER	DATE 2014/08/06			
					3 PLACES ± ---	± .010	APPROVED BY FSMITH	DATE 2014/08/14	MATERIAL NO. SEE CHART		
		2 PLACES ± 0.25	± .01	ANGULAR ±1/2°		DOCUMENT NO. SD-1625-5*		SHEET NO. 2 OF 2			
		1 PLACE ± 0.35	± ---	DRAFT WHERE APPLICABLE MUST REMAIN WITHIN DIMENSIONS		THIS DRAWING CONTAINS INFORMATION THAT IS PROPRIETARY TO MOLEX INCORPORATED AND SHOULD NOT BE USED WITHOUT WRITTEN PERMISSION					
		0 PLACE ± ---	± ---								