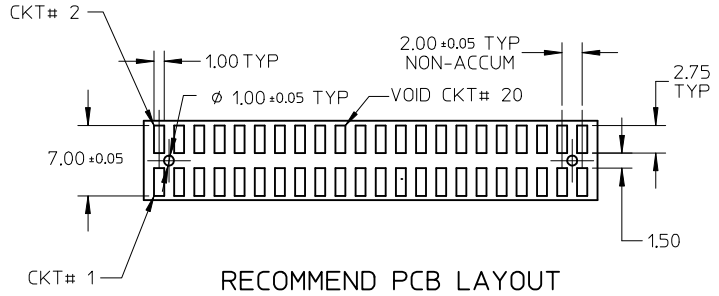
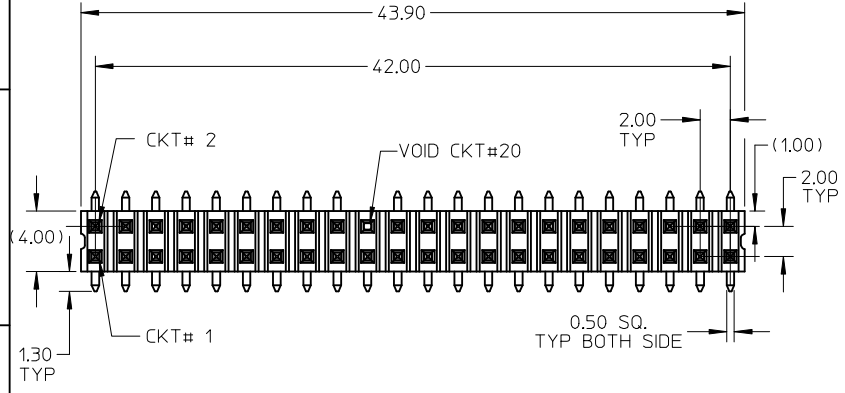


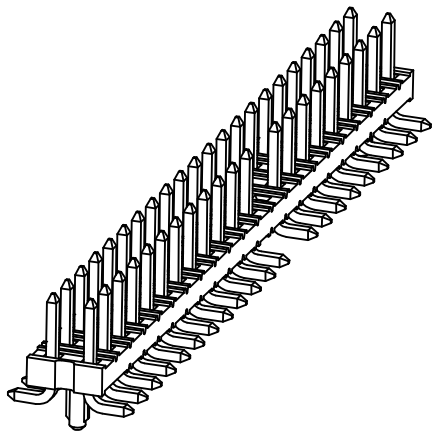
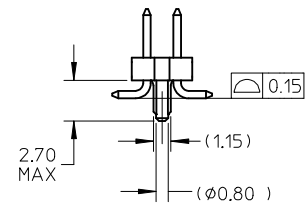
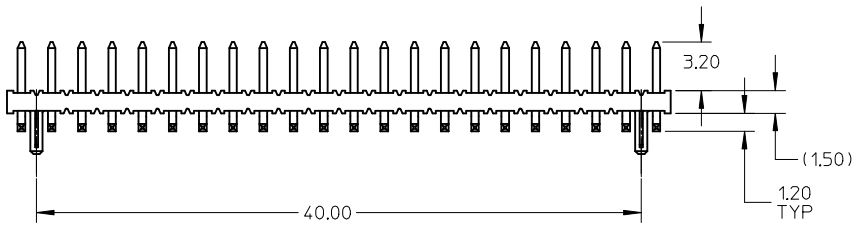
PACKAGING OPTION PART NO.			CKT SIZE	VOID POSITION	PLATING TYPE
TAPE & REEL WITH CAP	TUBE WITH CAP	TUBE WITHOUT CAP			
87759-6005	87759-6006	87759-6007	44	20	1



RECOMMEND PCB LAYOUT

NOTES:

- MATERIAL:
HOUSING: GLASS FILLED, NYLON 46, UL94V-0, COLOR: BLACK
TERMINAL: COPPER ALLOY 0.50mm SQ
 - PLATING TYPE:
(1) 10µm MIN. GOLD PLATE ON CONTACT, 100µm MIN. TIN ON SOLDER TAIL, BOTH OVER 50µm MIN. NICKEL OVERALL.
 - PIN PUSHOUT FORCE: 1KG MIN IN EITHER DIRECTION
 - FOR PACKAGING OPTION PLEASE REFER TO THE TABLE.
- △ CAP TO BE PLACED AS NEAR TO THE CENTRE OF PART AS POSSIBLE AND FULLY FLUSH TO THE WAFER SURFACE.



REVISED TUBE SPEC EC NO: S2007-0829 DRWN:SKL IM01 2007/04/10 CHKD:CWLAN 2007/04/12 APPR:KWLEE 2007/04/17	QUALITY SYMBOLS ▽=0 ∇=0	GENERAL TOLERANCES (UNLESS SPECIFIED)		DIMENSION STYLE MM ONLY		SCALE NTS	DESIGN UNITS METRIC	THIRD ANGLE PROJECTION		
			mm	INCH	DRAWN BY KSEE	DATE 2005/01/04	TITLE CUSTOM HEADER MGRID, 2.00MM PITCH, HDR DUAL ROW S/WAFER, SMT			
		4 PLACES	± ---	± ---	CHECKED BY PTL IM	DATE 2005/01/12	MATERIAL NO. SD-87759-231			
		3 PLACES	± ---	± ---	APPROVED BY SCLOW	DATE 2005/01/12	DOCUMENT NO. 1 OF 3			
			2 PLACES	± 0.2	± ---	DRAFT WHERE APPLICABLE MUST REMAIN WITHIN DIMENSIONS				
			1 PLACE	± ---	± ---	SIZE A3				
			ANGULAR ± 3 °		THIS DRAWING CONTAINS INFORMATION THAT IS PROPRIETARY TO MOLEX INCORPORATED AND SHOULD NOT BE USED WITHOUT WRITTEN PERMISSION					

10 9 8 7 6 5 4 3 2 1

F

E

D

C

B

A

F

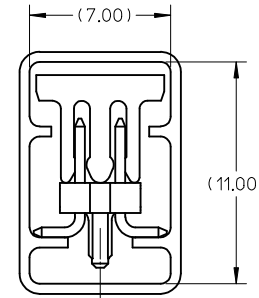
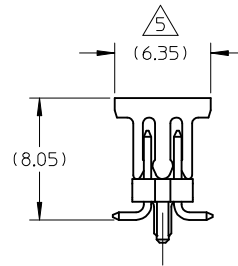
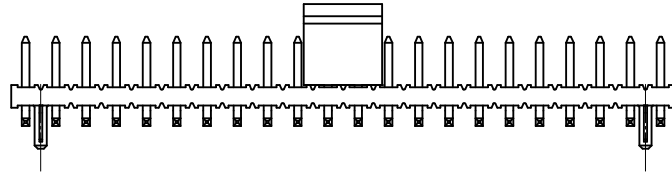
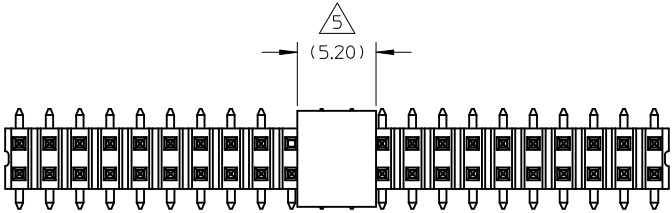
E

D

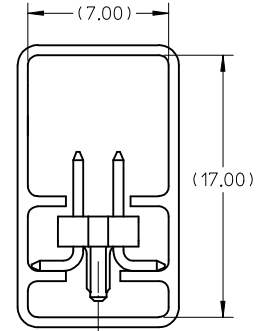
C

B

A



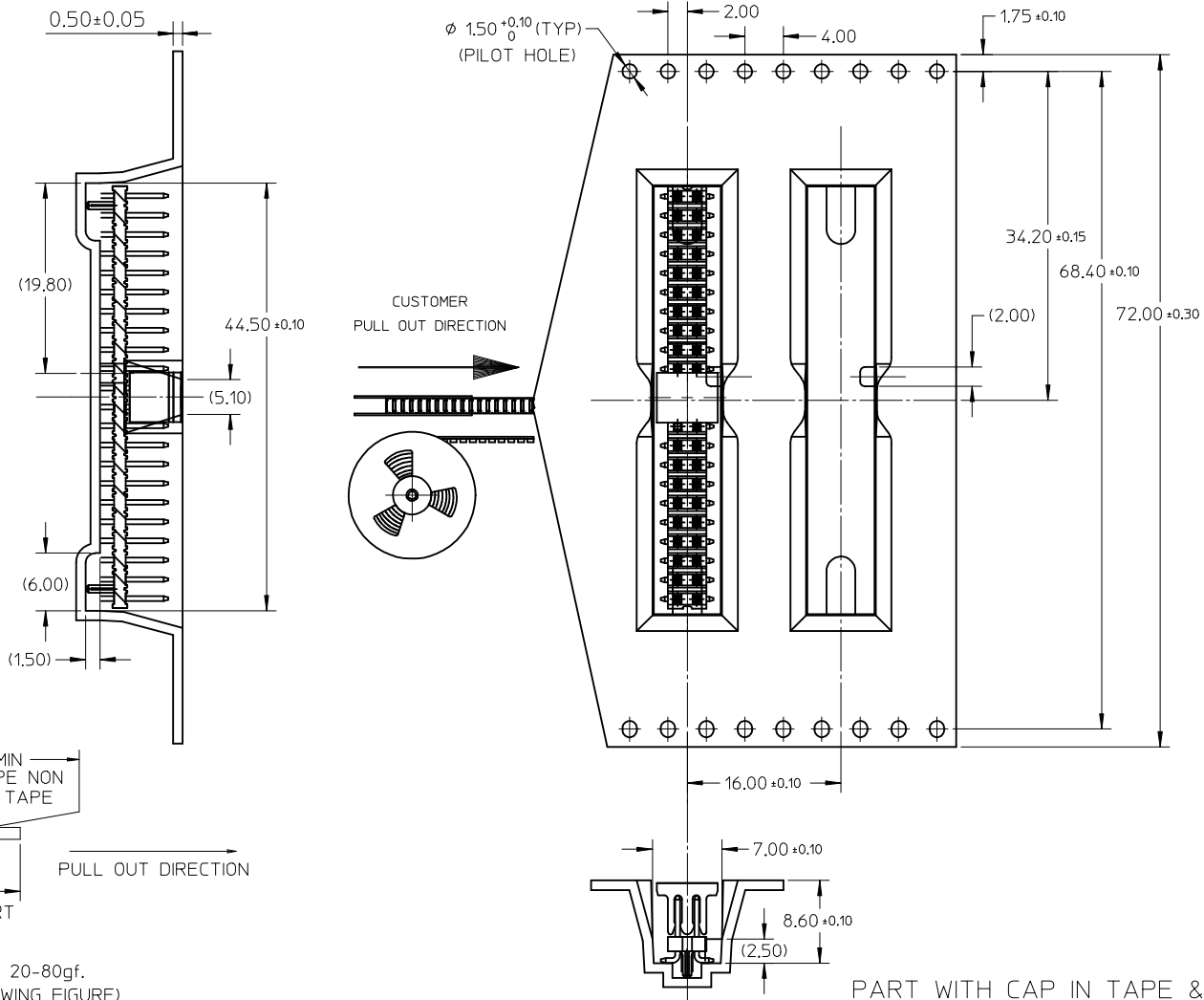
PART WITH CAP
IN TUBE



PART WITHOUT CAP
IN TUBE

REVISED TUBE SPEC EC NO: S2007-0829 DRWN:SKL IM01 2007/04/10 CHKD:CWLAM 2007/04/12 APPR:KWLEE 2007/04/17	DESCRIPTION REV	QUALITY SYMBOLS	GENERAL TOLERANCES (UNLESS SPECIFIED)		DIMENSION STYLE MM ONLY		SCALE NTS	DESIGN UNITS METRIC	THIRD ANGLE PROJECTION																
		▽=0 Ⓢ=0	<table border="1"> <thead> <tr> <th></th> <th>mm</th> <th>INCH</th> </tr> </thead> <tbody> <tr> <td>4 PLACES</td> <td>± ---</td> <td>± ---</td> </tr> <tr> <td>3 PLACES</td> <td>± ---</td> <td>± ---</td> </tr> <tr> <td>2 PLACES</td> <td>± 0.2</td> <td>± ---</td> </tr> <tr> <td>1 PLACE</td> <td>± ---</td> <td>± ---</td> </tr> </tbody> </table>		mm	INCH	4 PLACES	± ---	± ---	3 PLACES	± ---	± ---	2 PLACES	± 0.2	± ---	1 PLACE	± ---	± ---	ANGULAR ± 3 °		DRAWN BY KSEE	DATE 2005/01/04	TITLE		
			mm	INCH																					
		4 PLACES	± ---	± ---																					
3 PLACES	± ---	± ---																							
2 PLACES	± 0.2	± ---																							
1 PLACE	± ---	± ---																							
DRAFT WHERE APPLICABLE MUST REMAIN WITHIN DIMENSIONS			SEE TABLE		CHECKED BY PTL IM	DATE 2005/01/12	CUSTOM HEADER MGRID, 2.00MM PITCH, HDR DUAL ROW S/WAFER, SMT																		
					APPROVED BY SCLOW	DATE 2005/01/12	MOLEX INCORPORATED																		
					MATERIAL NO.		DOCUMENT NO.		SHEET NO.																
					SIZE A3		THIS DRAWING CONTAINS INFORMATION THAT IS PROPRIETARY TO MOLEX INCORPORATED AND SHOULD NOT BE USED WITHOUT WRITTEN PERMISSION																		

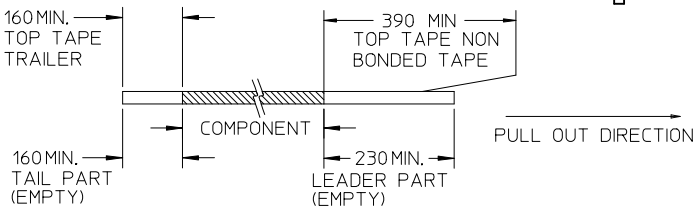
9 8 7 6 5 4 3 2 1



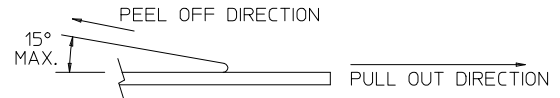
PART WITH CAP IN TAPE & REEL

NOTES:

1. LEADER AND TRAILER TAPE



2. PEELING OFF FORCE OF THE TOP TAPE: 20-80gf. (PEELING DIRECTION AS SHOWN IN FOLLOWING FIGURE)



- 3. TAPE AND REEL SPECIFICATION IS AS PER EIA-481.
- 4. TAPE AND REEL QUANTITY : 450 PCS/ REEL.
- 5. THE TAPE IS TREATED FOR ANTI-STATIC.

REVISED TUBE SPEC EC NO: S2007-0829 DRWN:SKL IM01 2007/04/10 CHKD:GWLAM 2007/04/12 APPR:KNLEE 2007/04/17	QUALITY SYMBOLS ▽=0 ∇=0	GENERAL TOLERANCES (UNLESS SPECIFIED)		DIMENSION STYLE	SCALE	DESIGN UNITS	THIRD ANGLE PROJECTION
				MM ONLY	NTS	METRIC	
				DRAWN BY	DATE	TITLE	
				CHECKED BY	DATE		
		4 PLACES	± --- ± ---	KSEE	2005/01/04	CUSTOM HEADER	
		3 PLACES	± --- ± ---	PTLIM	2005/01/12	MGRID, 2.00MM PITCH, HDR	
		2 PLACES	± 0.2 ± ---	APPROVED BY	DATE	DUAL ROW S/WAFER, SMT	
		1 PLACE	± --- ± ---	SCLOW	2005/01/12	MOLEX INCORPORATED	
		ANGULAR ± 3°		MATERIAL NO.	DOCUMENT NO.	SHEET NO.	
		DRAFT WHERE APPLICABLE MUST REMAIN WITHIN DIMENSIONS		SEE TABLE		SD-87759-231	
				SIZE	THIS DRAWING CONTAINS INFORMATION THAT IS PROPRIETARY TO MOLEX INCORPORATED AND SHOULD NOT BE USED WITHOUT WRITTEN PERMISSION		