

C-FILTER D-SUB ADAPTER

Socket connector / Plug connector – Precision machined contacts – Low profile

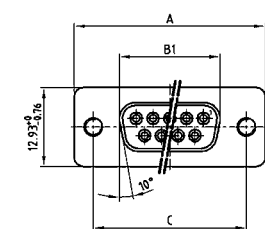


RoHS compliant – CSA listed, File No.: LR 115000-1 – UL listed, File No.: E202784

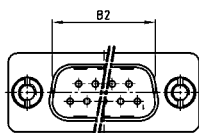
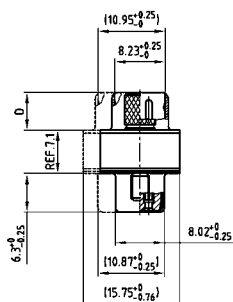
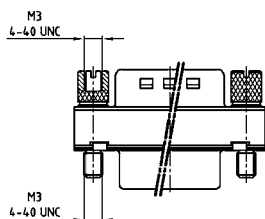
DESCRIPTION

- Mounting style:
with 4-40 UNC or M3 jack screw
- Quality class 3 (also available in quality class 1)
- Shell: Steel tin plated

PRODUCT DRAWING



No. of pos.	A -0.76	B1 -0.25	B2 +0.25	C	D -0.3
09	31.19	16.46	16.79	25.00 ^{+0.12} _{-0.13}	6.10
15	39.52	24.79	25.12	33.30 ^{+0.15} _{-0.10}	6.12
25	53.42	38.50	38.84	47.04 ^{+0.13}	5.99
37	69.70	54.96	55.30	63.50 ^{+0.13}	5.99
50	67.31	52.55	52.68	61.10 ^{+0.14} _{-0.11}	5.99



50 pos. = Dim. in (_)

ORDER DATA

SOCKET CONNECTOR / PLUG CONNECTOR WITH JACK SCREW			SOCKET CONNECTOR / PLUG CONNECTOR WITH JACK SCREW		
No. of pos.	Mounting style	Part Number	No. of pos.	Mounting style	Part Number
09	4-40 UNC Jack screw	243 A 11030 X	09	M3 Jack screw	243 A 11080 X
15	4-40 UNC Jack screw	243 A 11040 X	15	M3 Jack screw	243 A 11090 X
25	4-40 UNC Jack screw	243 A 11050 X	25	M3 Jack screw	243 A 11100 X
37	4-40 UNC Jack screw	243 A 11060 X	37	M3 Jack screw	243 A 11110 X
50	4-40 UNC Jack screw	243 A 11070 X	50	M3 Jack screw	243 A 11120 X

Capacitance 180 pF

C-FILTER D-SUB ADAPTER

Socket connector / Plug connector – Precision machined contacts – Low profile

ORDER DATA

Capacitance 370 pF					
SOCKET CONNECTOR / PLUG CONNECTOR WITH JACK SCREW			SOCKET CONNECTOR / PLUG CONNECTOR WITH JACK SCREW		
No. of pos.	Mounting style	Part Number	No. of pos.	Mounting style	Part Number
09	4-40 UNC Jack screw	243 A 10010 X	09	M3 Jack screw	243 A 10510 X
15	4-40 UNC Jack screw	243 A 10020 X	15	M3 Jack screw	243 A 10520 X
25	4-40 UNC Jack screw	243 A 10030 X	25	M3 Jack screw	243 A 10530 X
37	4-40 UNC Jack screw	243 A 10040 X	37	M3 Jack screw	243 A 10540 X
50	4-40 UNC Jack screw	243 A 10130 X	50	M3 Jack screw	243 A 10550 X

Capacitance 830 pF					
SOCKET CONNECTOR / PLUG CONNECTOR WITH JACK SCREW			SOCKET CONNECTOR / PLUG CONNECTOR WITH JACK SCREW		
No. of pos.	Mounting style	Part Number	No. of pos.	Mounting style	Part Number
09	4-40 UNC Jack screw	243 A 10090 X	09	M3 Jack screw	243 A 10610 X
15	4-40 UNC Jack screw	243 A 10100 X	15	M3 Jack screw	243 A 10620 X
25	4-40 UNC Jack screw	243 A 10110 X	25	M3 Jack screw	243 A 10630 X
37	4-40 UNC Jack screw	243 A 10120 X	37	M3 Jack screw	243 A 10640 X
50	4-40 UNC Jack screw	243 A 10150 X	50	M3 Jack screw	243 A 10650 X

Capacitance 1300 pF					
SOCKET CONNECTOR / PLUG CONNECTOR WITH JACK SCREW			SOCKET CONNECTOR / PLUG CONNECTOR WITH JACK SCREW		
No. of pos.	Mounting style	Part Number	No. of pos.	Mounting style	Part Number
09	4-40 UNC Jack screw	243 A 10050 X	09	M3 Jack screw	243 A 10560 X
15	4-40 UNC Jack screw	243 A 10060 X	15	M3 Jack screw	243 A 10570 X
25	4-40 UNC Jack screw	243 A 10070 X	25	M3 Jack screw	243 A 10580 X
37	4-40 UNC Jack screw	243 A 10080 X	37	M3 Jack screw	243 A 10590 X
50	4-40 UNC Jack screw	243 A 10140 X	50	M3 Jack screw	243 A 10600 X