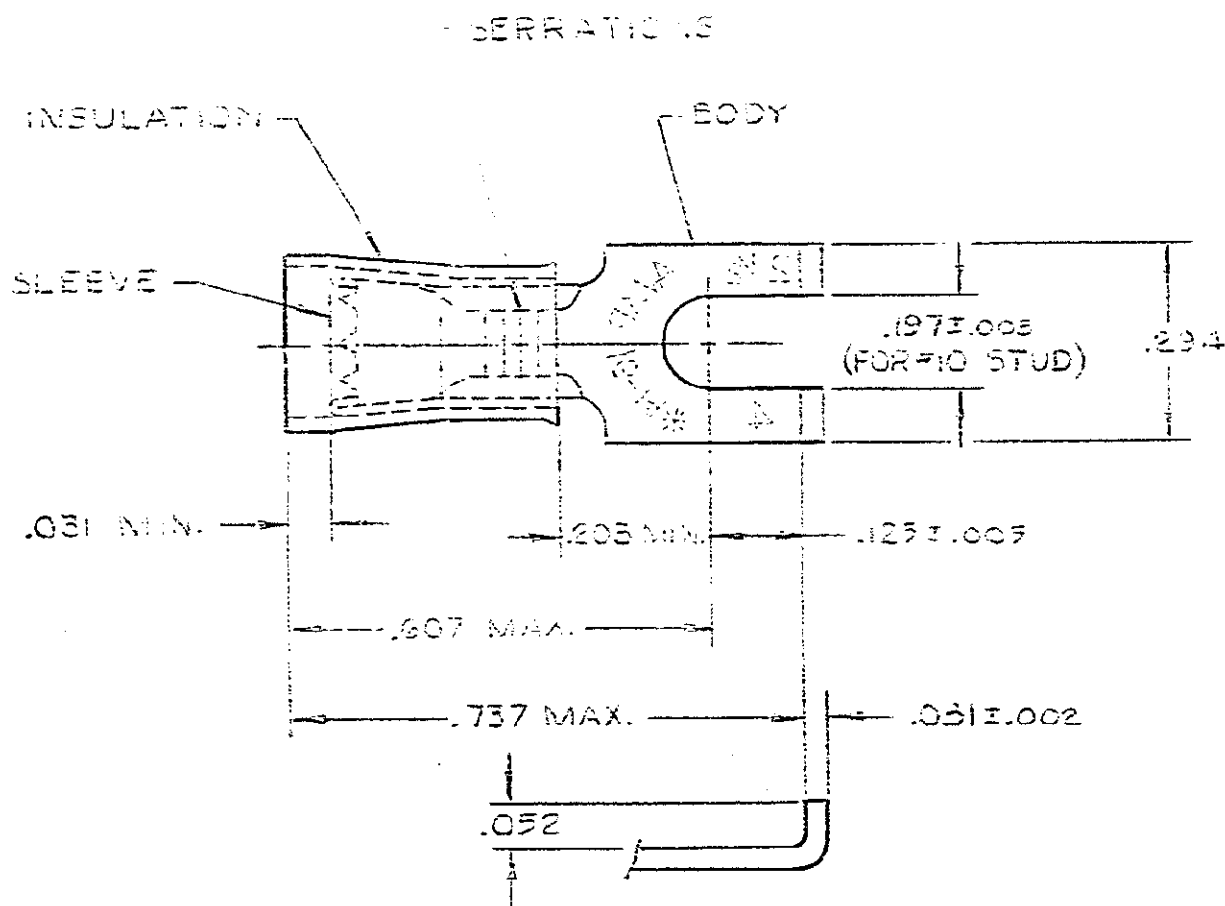


THIS DRAWING IS UNPUBLISHED. RELEASED FOR PUBLICATION
 © COPYRIGHT

REVISIONS						
P	F	ZONE	LTR	DESCRIPTION	DATE	APPROVED
			J1	REVISED PER ECO-11-005294	13APR11	HMR



- 1. WIRE INSULATION DIA. - SEE TABLE
- 2. BODY FINISH: TIN PLATE (MIL-T-10727)
.000100 MIN THK

QTY	WIRE INS DIA	QUANTITY	DESCRIPTION	PART NO
	.115 - .170	100	LOOSE PC, BOX	8-320863-1
	.115 - .170	100	ON TAPE, SW. BOX	2-320863-6
	.115 - .170	1000	ON TAPE, LA. BOX	2-320863-5
085,	.115 - .170	1	LOOSE PIECE	2-320863-3
	.115 - .170	5000	ON TAPE, REEL	2-320863-2
	.115 - .170	1	LOOSE PIECE	320863

WIRE INS DIA	QUANTITY	DESCRIPTION	PART NO
UNLESS OTHERWISE SPECIFIED DIMENSIONS ARE IN INCHES. TOLERANCES ON: DECIMALS ±.008 ANGLES ±		CONTRACT NO	
MATERIAL INSULATION: NYLON - BLUE BODY & SLEEVE: COPPER (33-C-576)		DR UTA / RFB 9-30-89	
FINISH BODY: 2		CHK <i>Ph...</i> 11-26-13	
		APPD <i>...</i> 11-26-13	
		DSGN APPD	
		OTHER APPD	
TE Connectivity WIRE TERMINAL P.I.D.G.-FLANGED SPADE WIRE SIZE: 16-14		NAME	
		SIZE	B
		FSCM NO	00779
		DRAWING NO	320863
		SCALE	NTS
		SHEET	1 OF 1