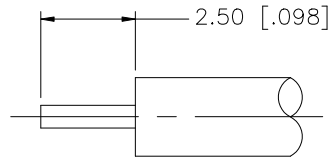
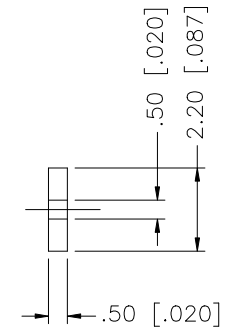
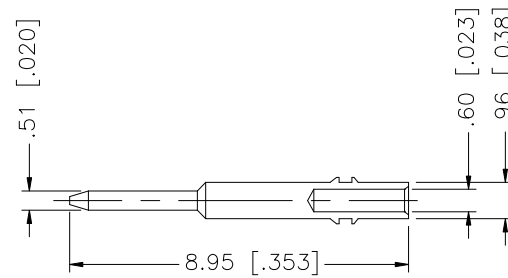
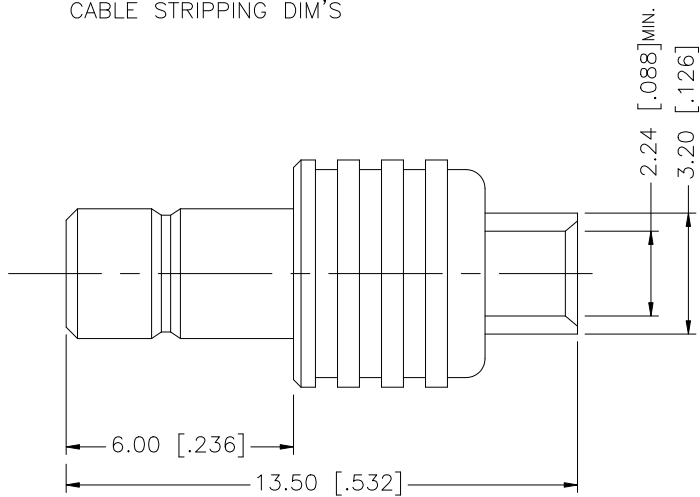


REV.	DATE	DESCRIPTION
NC	05/24/05	INITIAL RELEASE
A	07/31/07	ADD INSULATOR, UPDATE DRAWING FORMAT



RECOMMENDED
CABLE STRIPPING DIM'S



8					<small>UNLESS OTHERWISE SPECIFIED DIMENSIONS ARE IN MILLIMETERS. DIMENSIONS IN [] ARE IN INCHES AND FOR CUSTOMER REFERENCE ONLY.</small> <small>UNLESS OTHERWISE SPECIFIED TOLERANCES FOR MILLIMETERS ARE:</small> 0.5 - 8mm ± 0.20mm 8 - 30mm ± 0.40mm 30 - 120mm ± 0.50mm <small>UNLESS OTHERWISE SPECIFIED TOLERANCES FOR INCHES ARE:</small> .020 - .315 = ± 0.007" .315 - 1.180 = ± 0.015" 1.180 - 4.724 = ± 0.020"	APPROVALS	DATE	<h1 style="color: blue;">Amphenol Connex</h1>			
7				DRAWN		G.R.S.	07/31/07				
6				CHECKED				PART DESCRIPTION SMB DIRECT SOLDER JACK (FOR .085", .086" S/R CABLE)			
5				ISSUED							
4	INSULATOR	TEFLON	NATURAL	1	SHEET	1 OF 1	PART NO. 142253				
3	CONTACT PIN	BRASS	GOLD	1							
2	INSULATOR	TEFLON	NATURAL	1			DWG. NO. 142253.DWG				
1	BODY	BRASS	GOLD	1	REV. A SIZE A SCALE NA						
	DESCRIPTION	MATERIAL	FINISH	QTY					<small>DO NOT SCALE DRAWING</small> CAD FILE C:/142/142253.DWG		