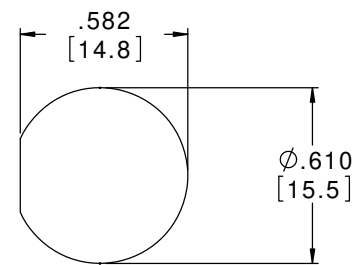
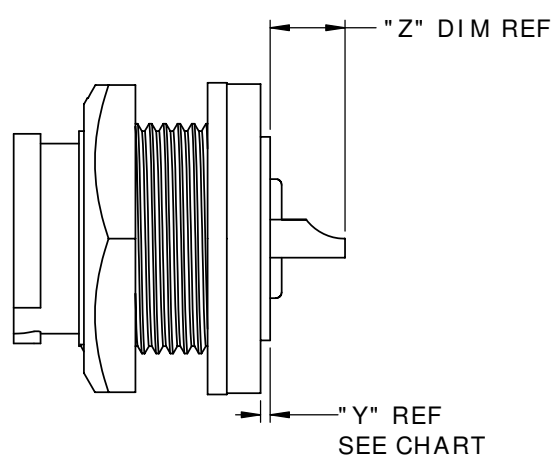


CUSTOMER PRINT

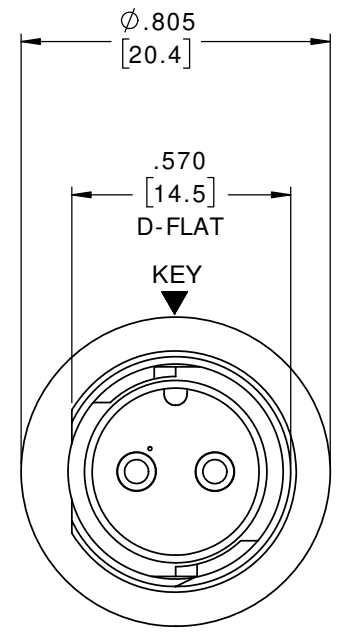
PART NUMBER: W7382-XPG-P-300

- NOTES:**
1. ALL PARTS TO TO BE BULK PACKED.
  2. CONTACTS TO BE INSERTED INTO HOUSING
  3. ALL DIMENSIONS ARE REFERENCE EXCEPT THOSE WITH A TOLERANCE

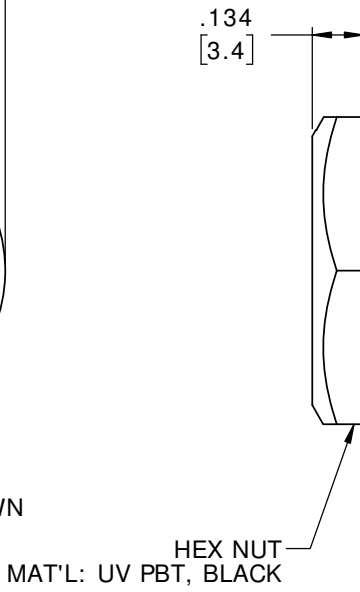
ASSEMBLY P/ N	CONTACT QTY.	"X" REF	"Y" REF	"Z" REF
W7382-2PG-P-300	2 # 16	.668 [17.0]	.025 [.6]	.195 [5.0]
W7382-3PG-P-300	3 # 16	.668 [17.0]	.025 [.6]	.195 [5.0]
W7382-4PG-P-300	4 # 16	.668 [17.0]	.025 [.6]	.195 [5.0]
W7382-5PG-P-300	5 # 16	.643 [16.3]	0.000 [0.0]	.188 [4.8]



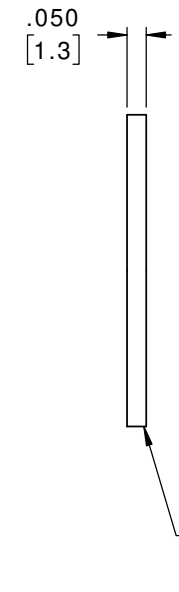
RECOMMENDED  
PANEL CUT-OUT  
TOLERANCE: ±.003



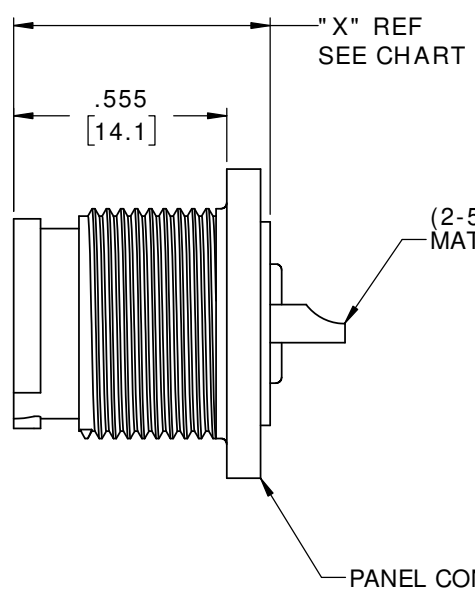
**MATING FACE**  
W7382-2PG-P-300 SHOWN



HEX NUT  
MAT'L: UV PBT, BLACK

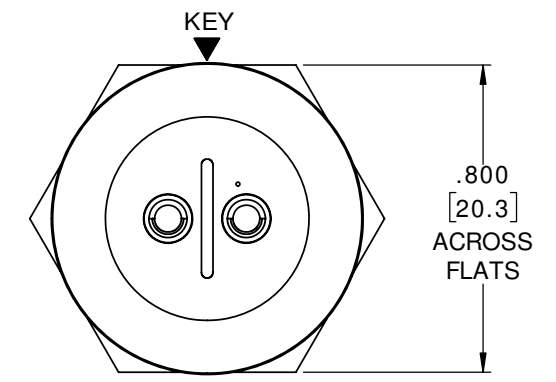


GASKET  
MAT'L: NEOPRENE, BLACK  
(B)

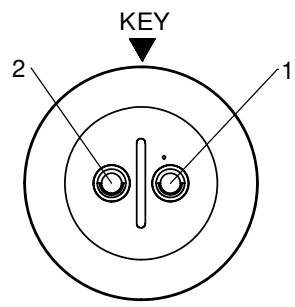


(2-5) # 16 PIN CONTACTS, SOLDER  
MAT'L: GOLD PLATED COPPER ALLOY

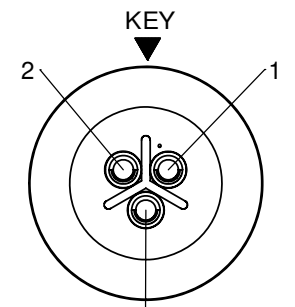
PANEL CONNECTOR, MALE  
MAT'L: UV PBT, BLACK



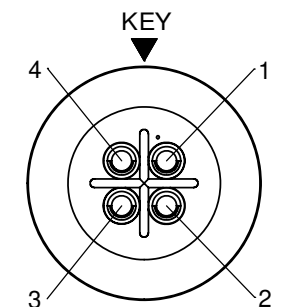
**WIRING END**  
W7382-2PG-P-300 SHOWN



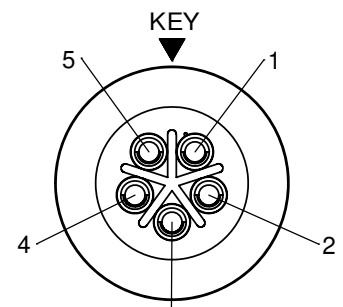
**WIRING END**  
W7382-2PG-P-300



**WIRING END**  
W7382-3PG-P-300



**WIRING END**  
W7382-4PG-P-300



**WIRING END**  
W7382-5PG-P-300

DIMENSIONS IN BRACKETS [ ] ARE IN MILLIMETERS

**CUSTOMER APPROVAL**

THIS DOCUMENT CONTAINS CONFIDENTIAL INFORMATION PROPRIETARY TO CONXALL CORPORATION. ANY REPRODUCTION, DISCLOSURE, OR USE OF THIS DOCUMENT / INFORMATION IS EXPRESSLY PROHIBITED UNLESS AUTHORIZED IN WRITING BY CONXALL CORPORATION.

APPROVED BY: \_\_\_\_\_  
DATE: \_\_\_\_\_

REV.	INIT.	DATE	DESCRIPTION
B	MA	04-01-20	GASKET MATERIAL WAS NITRILE PER ECR 9512
A	MA	01-20-20	RELEASED PER PDR 16014
	PNK	01-08-18	DRAWING CREATED PER PDR16014

ALL INFORMATION ILLUSTRATED IS THE PROPERTY OF CONXALL CORPORATION. UNAUTHORIZED DUPLICATION OR DISTRIBUTION OF THIS DOCUMENT IS PROHIBITED.	ORIG. DRAWN BY: PNK DATE: 01-08-18	
ALL UNITS ARE IN FEET, INCHES, FRACTION OF INCHES, AND DECIMALS.	CHECKED BY:	
APPROVED BY:	TITLE: PANEL-MOUNT ASSEMBLY (2-5) #16 PIN CONTACTS, SOLDER INSTA-CLICK™ MINI-CON-X	CUSTOMER: STANDARD PRODUCT
SCALE: NTS SIZE: B SHEET: 1 OF 1	PART NUMBER: W7382-XPG-P-300	

RoHS COMPLIANT

FILE: W7382-XPG-P-300 DIRECTORY: SLW