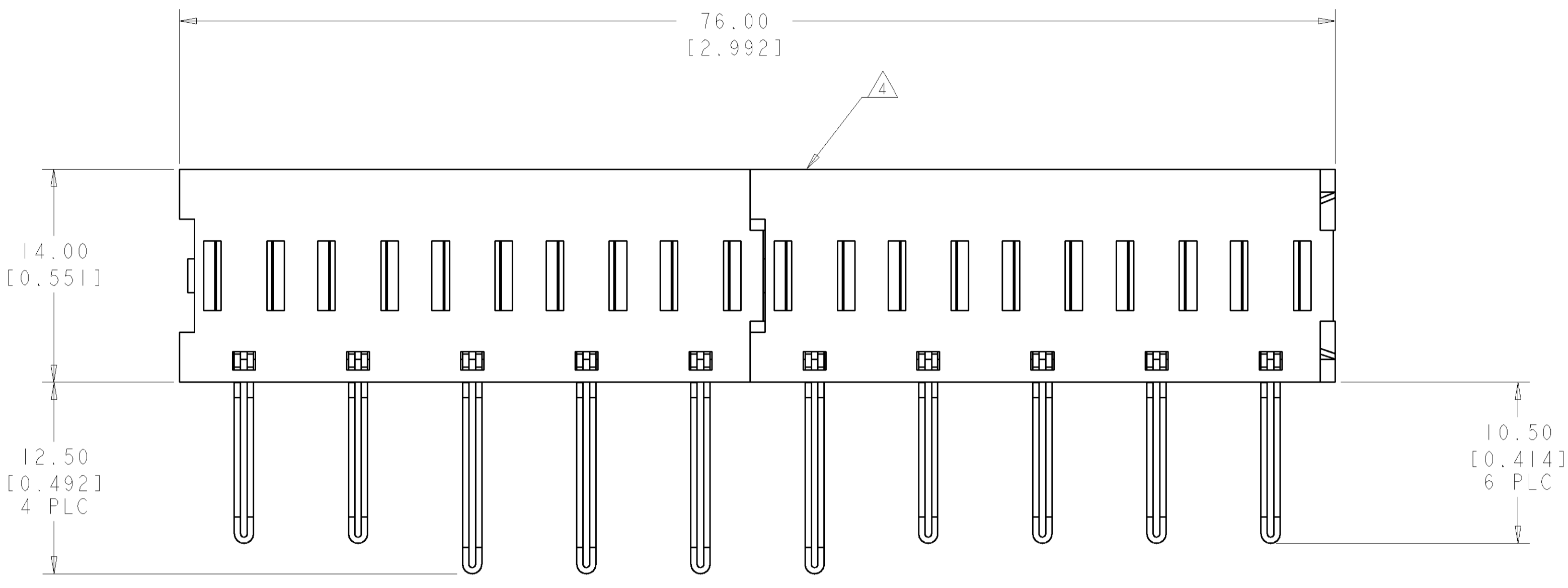


| LOC | DIST | REV | DATE | BY | CHKD | APVD |
|-----|------|-----|-----------|----|------|------|
| GP | 00 | A | 02MAY2006 | RG | SF | |

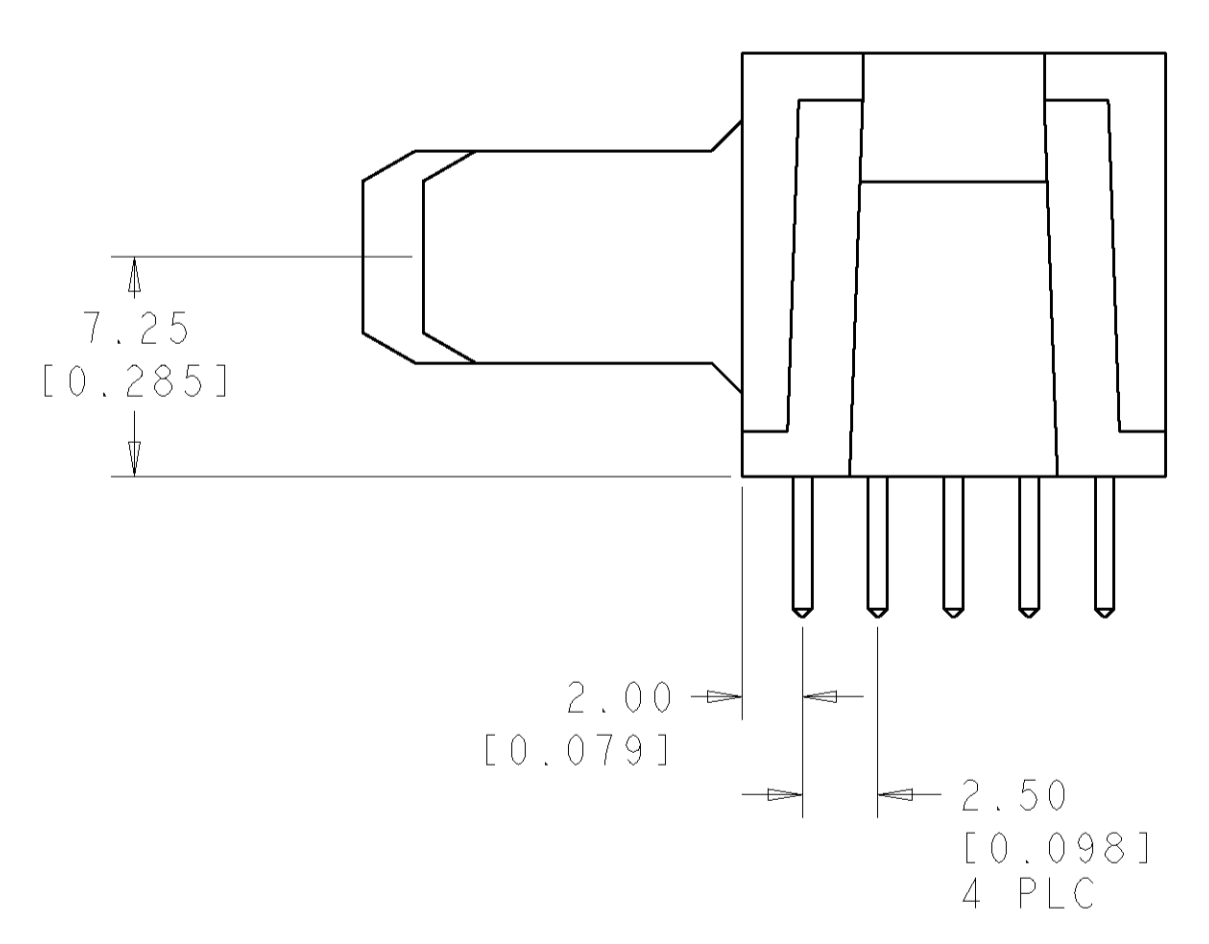
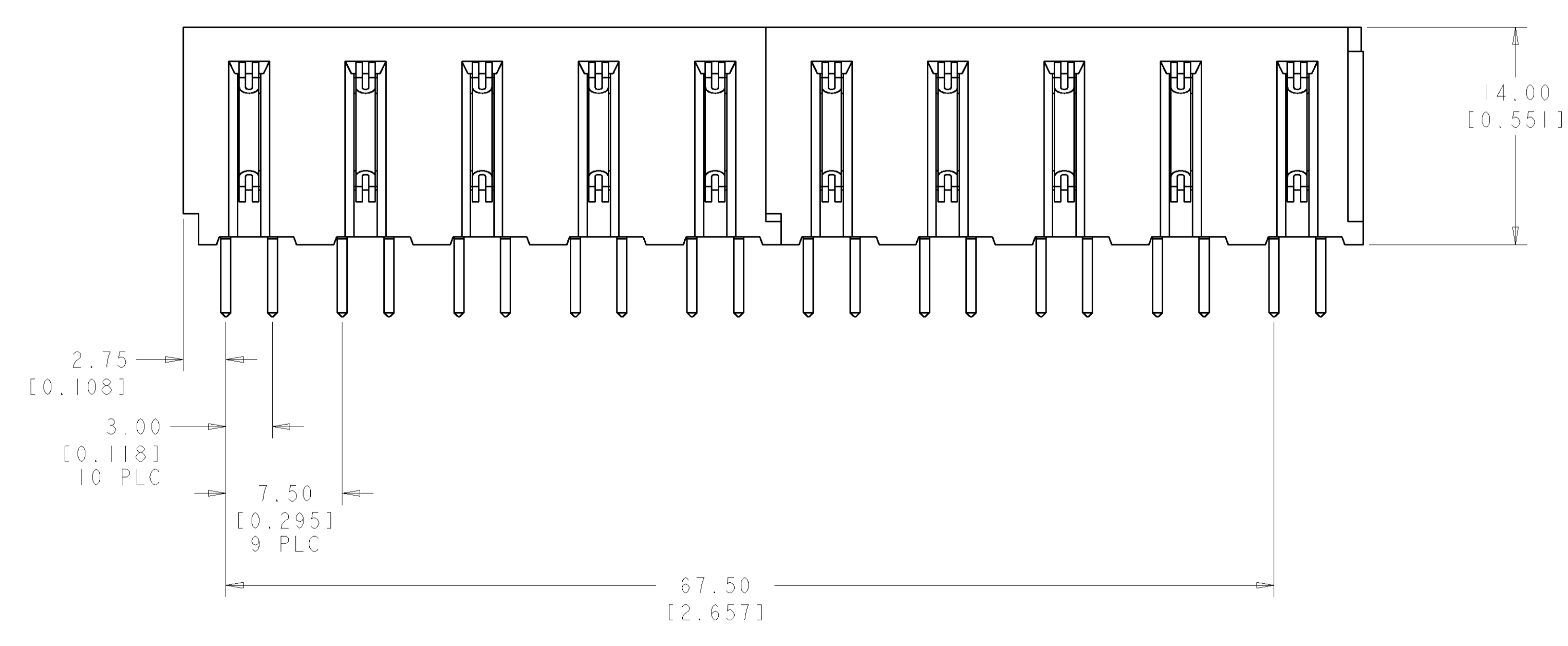


- PART NUMBER CHANGES AND OR DESIGN CHANGES AFFECTING ITEM INTERCHANGEABILITY REQUIRE PRIOR TYCO APPROVAL AND AUTHORIZATION BY REVISION TO THIS DRAWING.
- MATERIAL:
 - INSULATORS - THERMOPLASTIC, GLASS REINFORCED, COLOR: BLACK UL94V-0 FLAMMABILITY RATED.
 - SOLDER SIGNAL PIN: BRASS ALLOY
 - POWER CONTACTS - PHOSPHOR BRONZE ALLOY, COPPER ALLOY
 - CROWN BANDS - BERYLLIUM COPPER ALLOY
 - SIGNAL CONTACTS - BRASS ALLOY

- FINISH:
 - CONTACTS - GOLD PLATE .000030 INCH MIN. THK. OVER NICKEL .000050 INCH MIN. THK.
 - SOLDER TAILS-TIN .00010 INCH MIN. ALL OVER NICKEL .000050 INCH MIN. THK.
- ITEMS PROVIDED TO THIS SPECIFICATION TO BE PERMANENTLY IDENTIFIED PER THE FOLLOWING IDENTIFIER LABEL

TYCO PART NO. DATE CODE YEAR WEEK
 XXXXXXXX-X XXXX 0106

5. THIS CONNECTOR MATES WITH P/N 1926075-1.

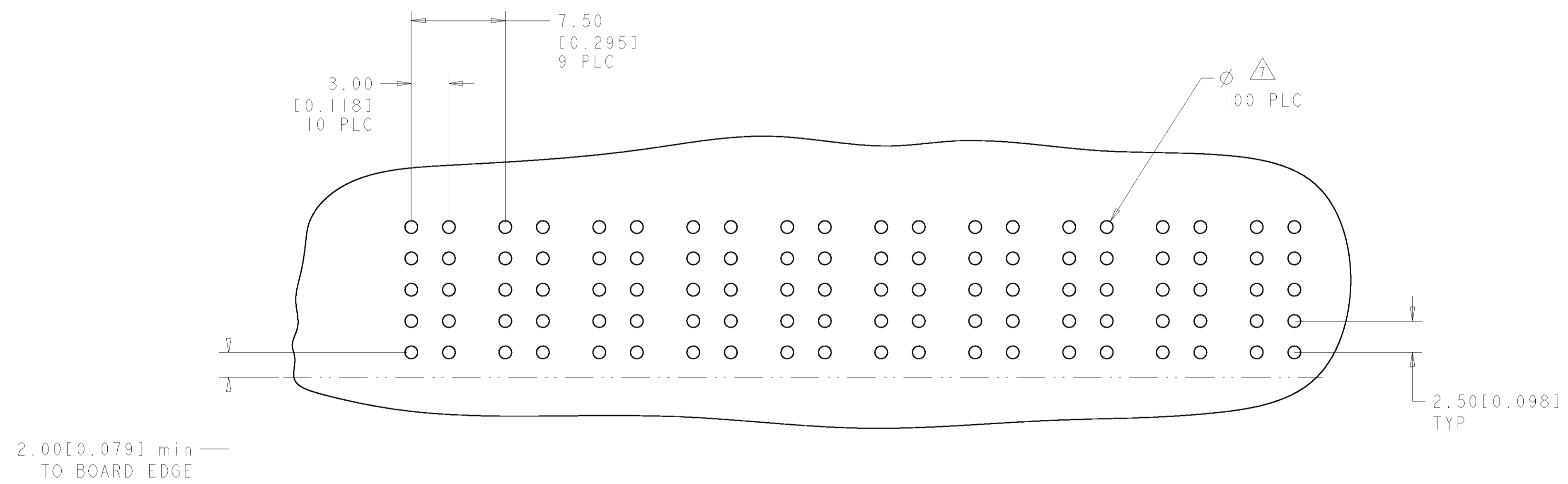


ELCON FLATPAQ

| | | | |
|--|--|--|--|
| AS SHOWN | | 1926074-1 | |
| DESCRIPTION | | PART NUMBER | |
| DIMENSIONS: mm [INCHES] TOLERANCES UNLESS OTHERWISE SPECIFIED: 0 PLC ± 1 PLC ±.5 [0.020] 2 PLC ±0.25 [0.010] 3 PLC ± 4 PLC ± ANGLES ±.5 FINISH | | DWN: R. GRZYBOWSKI 21MAR2006 CHK: S. FLICKINGER 21MAR2006 APVD: S. FLICKINGER 21MAR2006 PRODUCT SPEC APPLICATION SPEC WEIGHT CUSTOMER DRAWING | |
| MATERIAL: - FINISH: - | | Tyco Electronics Harrisburg, PA 17105-3608 TOP ASSEMBLY CONNECTOR PIN RIGHT ANGLE, SOLDER TAILS SIZE: CAGE CODE: DRAWING NO: RESTRICTED TO A100779C=1926074 SCALE: 4:1 SHEET 1 OF 3 REV A | |

| LOC | DIST | REVISIONS | | | |
|-----|------|-------------|------|-----|------|
| P | LTR | DESCRIPTION | DATE | DRN | APVD |
| - | - | SEE SHEET 1 | - | - | - |
| | | | | | |
| | | | | | |

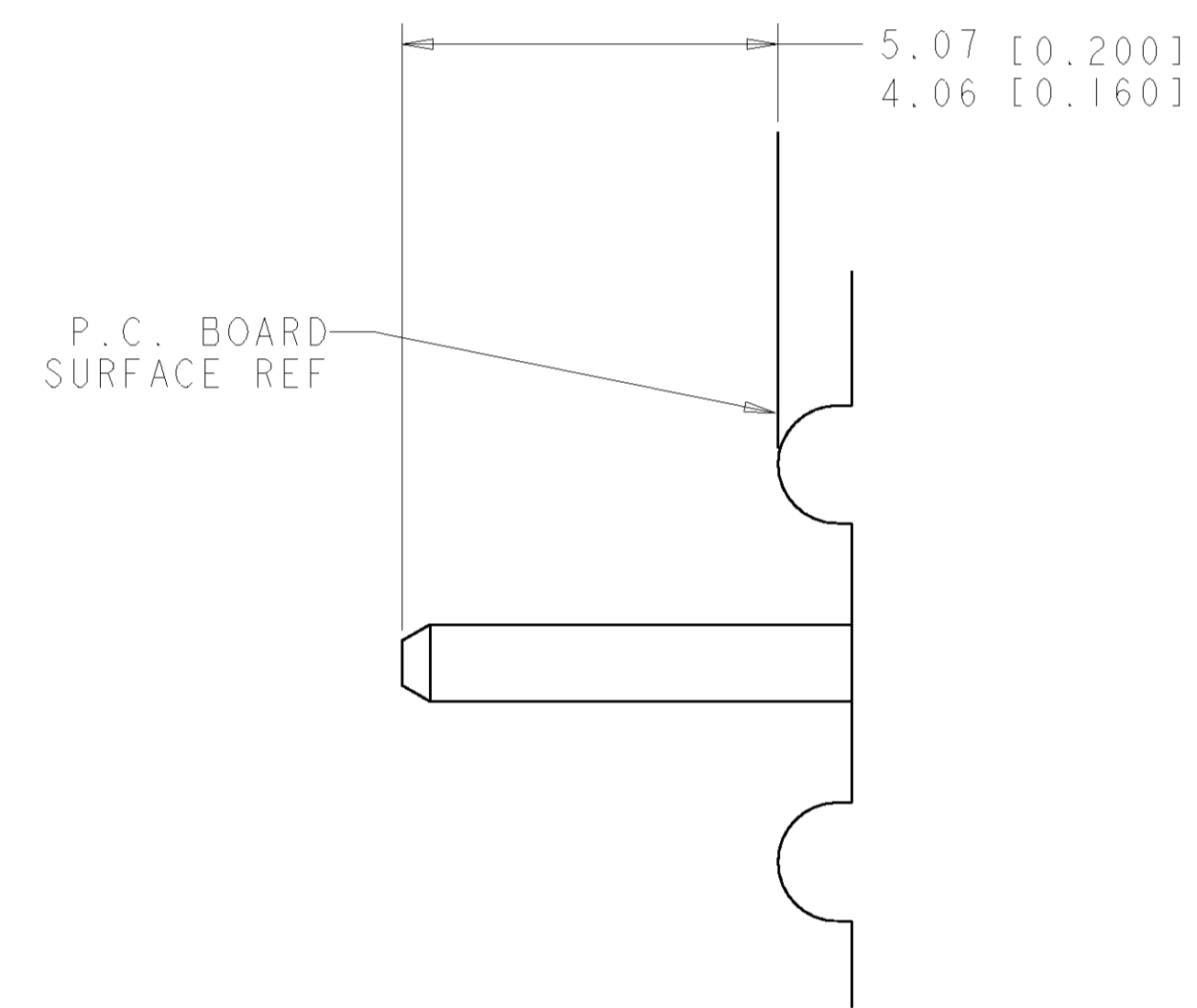
| CONNECTOR | CATALOG MODULE # | QTY | SIZE NO. | CONTACT QTY | MATING PIN | MAX. CURRENT (PER CONTACT) | CONTACT SPACING | VOLTAGE RATING |
|-----------|------------------|-----|----------|-------------|------------------------------|----------------------------|-----------------|----------------|
| PIN | FPI05 | 6 | 8 | 6 | 1.25 X 7.00 [.049 X .276] | 35 amps | 7.50 [.2953] | 250 |
| | FPI06 | 4 | 8 | 4 | 1.25 X 7.00 [.049 X .276] | 35 amps | 7.50 [.2953] | 250 |



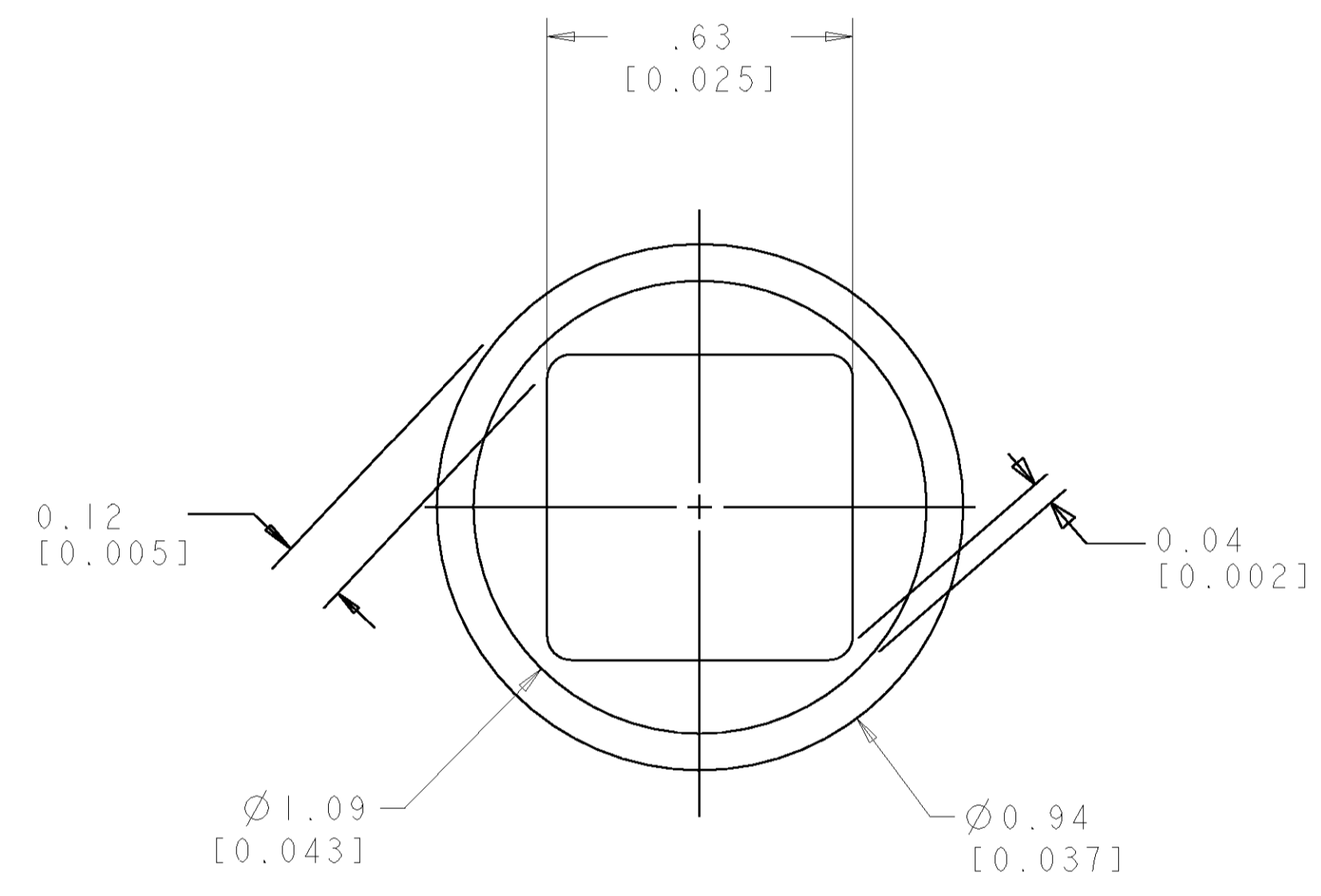
PRINTED CIRCUIT LAYOUT
 COMPONENT SIDE

| | | | |
|--|---|---|---|
| <small>THIS DRAWING IS UNPUBLISHED. RELEASED FOR PUBLICATION. ALL RIGHTS RESERVED. © 2006 BY TYCO ELECTRONICS CORPORATION.</small> | | DWN: B. GRZYBOWSKI 21MAR2006 CHK: S. FLICKINGER 21MAR2006 APVD: S. FLICKINGER 21MAR2006 | tyco Electronics Tyco Electronics Harrisburg, PA 17105-3608 |
| DIMENSIONS: mm [INCHES] | TOLERANCES UNLESS OTHERWISE SPECIFIED: 0 PLC ± 1 PLC ±.5 [.020] 2 PLC ±0.25 [.010] 3 PLC ± 4 PLC ± ANGLES ±.5 | PRODUCT SPEC APPLICATION SPEC WEIGHT FINISH | NAME: TOP ASSEMBLY CONNECTOR PIN RIGHT ANGLE, SOLDER TAILS SIZE: A 00779 C=1926074 CUSTOMER DRAWING |
| MATERIAL: - FINISH: - | | WEIGHT: - FINISH: - | RESTRICTED TO: - SCALE: 4:1 SHEET 2 OF 3 REV A |

| LOC | DIST | REVISIONS | | | | | |
|-----|------|-----------|-----|-------------|------|-----|------|
| | | P. | LTR | DESCRIPTION | DATE | DWN | APVD |
| GP | 00 | - | - | SEE SHEET 1 | - | - | - |
| | | | | | | | |
| | | | | | | | |



6. SOLDER TAIL DETAIL
SCALE 10 : 1



△ SOLDER TERMINATION AREA
 SCALE 40:1
 RECOMMENDED PRINTED CIRCUIT HOLE
 SOLDER TAIL
 FINISHED HOLE: Ø 1.02 [0.040] ±.008 [0.003]
 DRILLED HOLE: Ø 1.15 [0.0453] ±.013 [0.0005]
 COPPER PLATE: .025 [0.0010] MIN. (PER SURFACE)
 TIN PLATE: .008 [0.0003] MIN. (PER SURFACE)

| | | | |
|--|--|---|--|
| <small>THIS DRAWING IS UNPUBLISHED. RELEASED FOR PUBLICATION. IT IS THE PROPERTY OF TYCO ELECTRONICS CORPORATION. IT IS TO BE USED ONLY FOR THE PURPOSES SPECIFIED HEREIN. IT IS TO BE RETURNED TO TYCO ELECTRONICS CORPORATION UPON THE COMPLETION OF THE PROJECT. NO PARTS OF THIS DRAWING ARE TO BE REPRODUCED OR TRANSMITTED IN ANY FORM OR BY ANY MEANS, ELECTRONIC OR MECHANICAL, INCLUDING PHOTOCOPYING, RECORDING, OR BY ANY INFORMATION STORAGE AND RETRIEVAL SYSTEM, WITHOUT THE WRITTEN PERMISSION OF TYCO ELECTRONICS CORPORATION.</small> | | DWN: B. GRZYBOWSKI 21MAR2006 CHK: S. FLICKINGER 21MAR2006 APVD: S. FLICKINGER 21MAR2006 | tyco Tyco Electronics Harrisburg, PA 17105-3608 |
| DIMENSIONS: mm [INCHES] | TOLERANCES UNLESS OTHERWISE SPECIFIED: 0 PLC ±. 1 PLC ±.5 [0.020] 2 PLC ±0.25 [0.010] 3 PLC ±. 4 PLC ±. ANGLES ± 5 | PRODUCT SPEC APPLICATION SPEC | NAME: TOP ASSEMBLY CONNECTOR PIN RIGHT ANGLE, SOLDER TAILS |
| MATERIAL: - FINISH: - | WEIGHT: - CUSTOMER DRAWING | SIZE: A 00779 C=1926074 SCALE: 4:1 SHEET: 3 OF 3 REV: A | RESTRICTED TO: - |